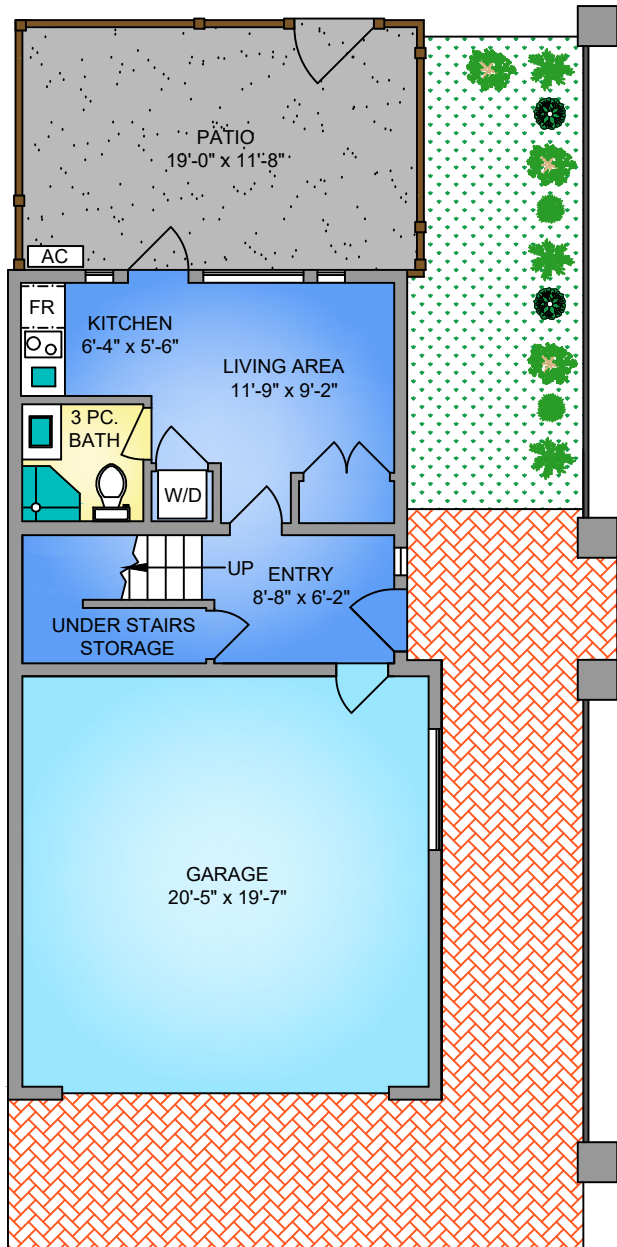


# FIRST FLOOR

366 SQ. FT.

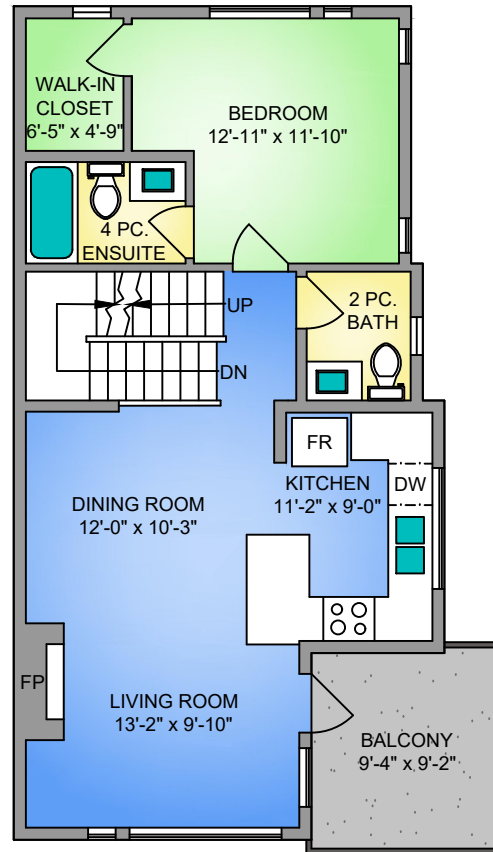
9' CEILING HEIGHT



# SECOND FLOOR

744 SQ. FT.

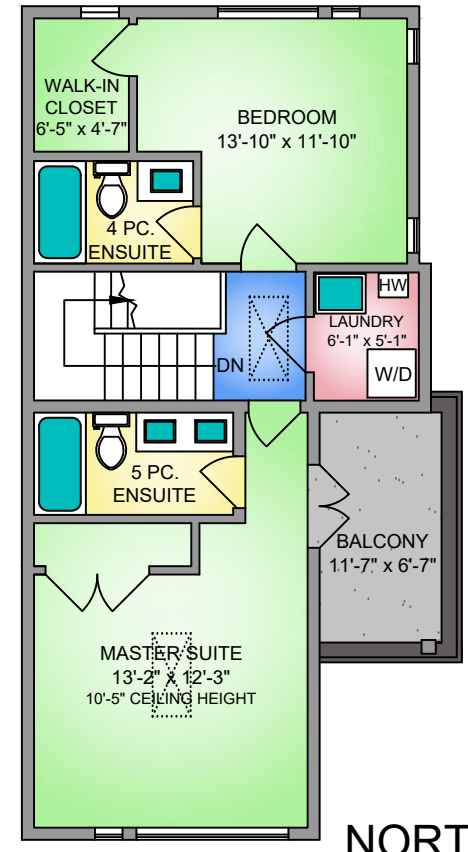
9' CEILING HEIGHT



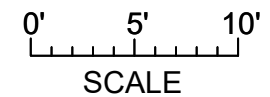
# THIRD FLOOR

666 SQ. FT.

9' CEILING HEIGHT



NORTH



**ally and dennis**  
REAL PEOPLE - REAL REAL ESTATE



250-884-9753  
matt@propermeasure.com  
www.propermeasure.com

UNIT 301 - 2130 SOOKE ROAD			
JANUARY 27, 2020			
PREPARED FOR THE EXCLUSIVE USE OF DENNIS GUEVIN *PREC & ALLY GUEVIN			
PLANS MAY NOT BE 100% ACCURATE, IF CRITICAL BUYER TO VERIFY.			
SQ FT TAKEN FROM STRATA PLAN, NOT CALCULATED BY PROPER MEASURE.			
FLOOR	AREA (SQ. FT.)		
	FINISHED	GARAGE	PATIO / BALC.
FIRST	366	417	223
SECOND	744	-	87
THIRD	666	-	79
<b>TOTAL</b>	<b>1776</b>	<b>417</b>	<b>389</b>