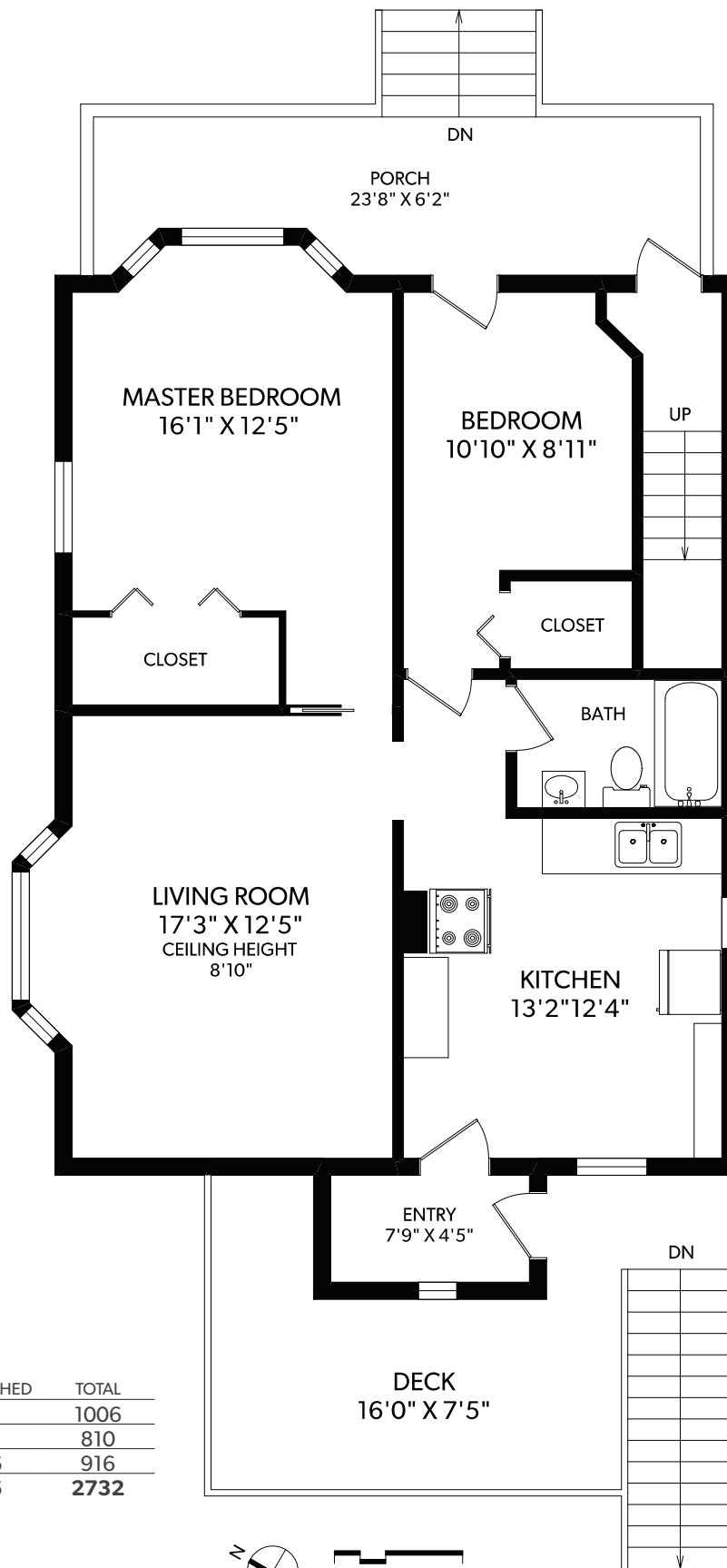
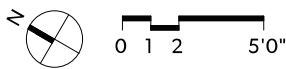


MAIN FLOOR



FLOOR	FINISHED	UNFINISHED	TOTAL
MAIN	1006	0	1006
UPPER	810	0	810
LOWER	0	916	916
TOTAL	1816	916	2732

OTHER AREAS	
GARAGE	374
DECK	178
PORCH	151



REAL FOTO 2582 VANCOUVER STREET

DOCUMENT PREPARED FOR THE EXCLUSIVE USE OF
TOBY TREMBATH*

250-388-6998
 ORDERS@REALFOTO.CA

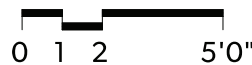
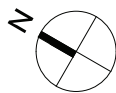
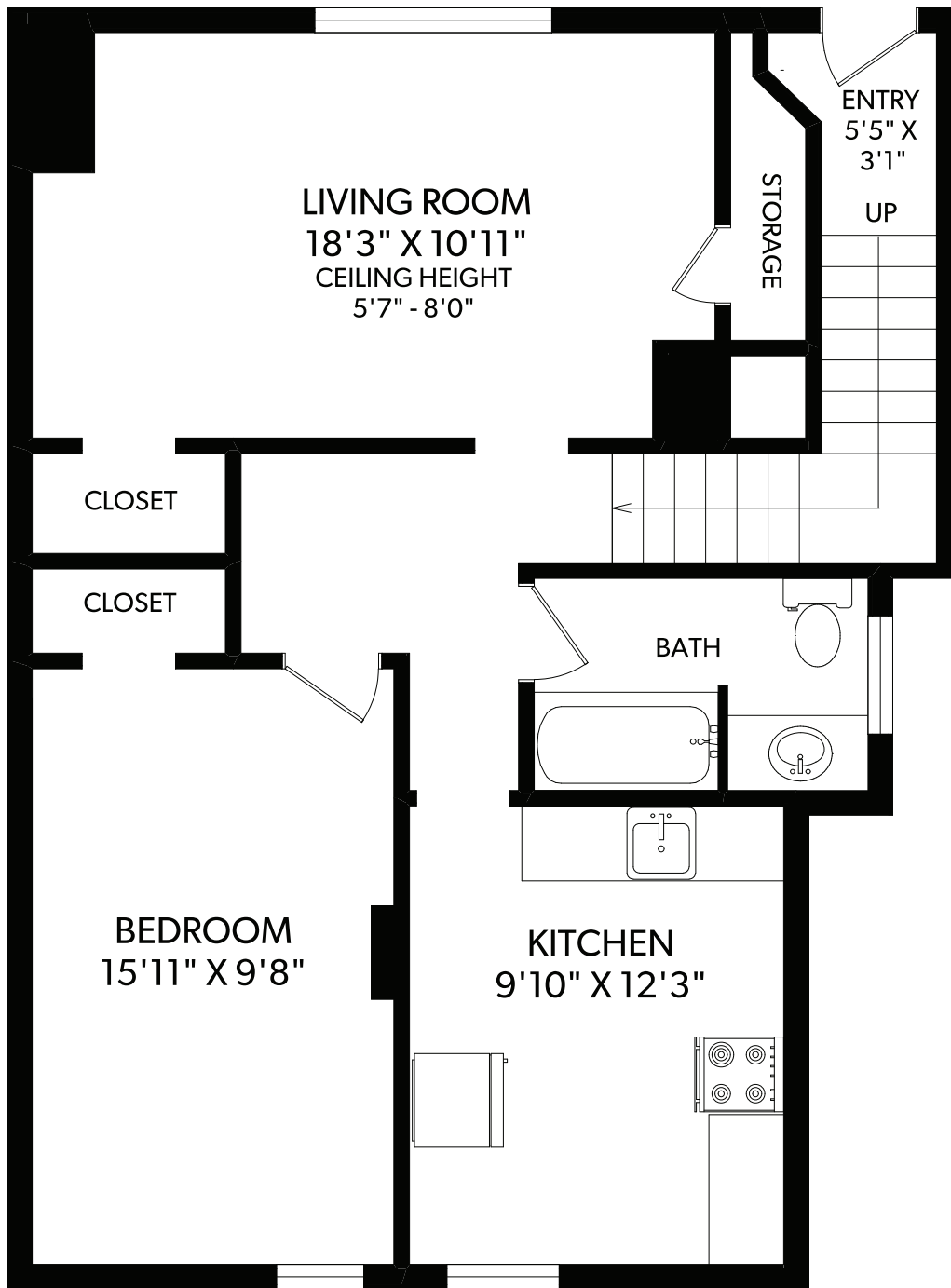
*PERSONAL REAL ESTATE CORPORATION
 MEASURED 02/22/2018 BY VICTORIA JONES



CHRISTIE'S
 INTERNATIONAL REAL ESTATE

All information furnished regarding this property is from sources deemed reliable but no warranty or representation is made to the accuracy thereof.

UPPER FLOOR



FLOOR	FINISHED	UNFINISHED	TOTAL
MAIN	1006	0	1006
UPPER	810	0	810
LOWER	0	916	916
TOTAL	1816	916	2732

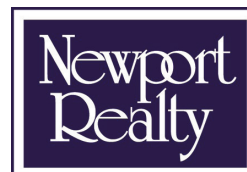
OTHER AREAS	
GARAGE	374
DECK	178
PORCH	151

REAL FOTO 2582 VANCOUVER STREET

DOCUMENT PREPARED FOR THE EXCLUSIVE USE OF
TOBY TREMBATH*

250-388-6998
ORDERS@REALFOTO.CA

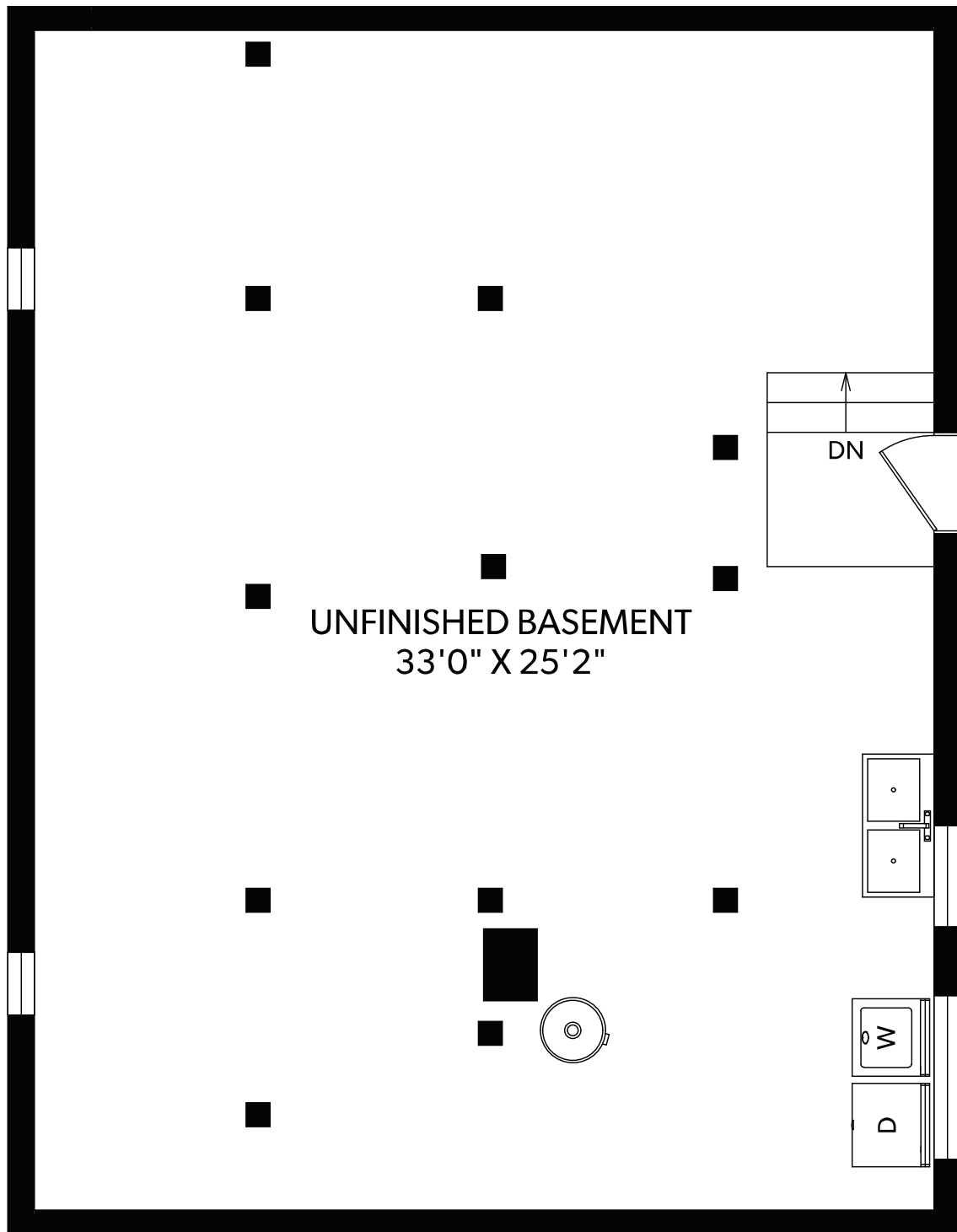
*PERSONAL REAL ESTATE CORPORATION
MEASURED 02/22/2018 BY VICTORIA JONES



CHRISTIE'S
INTERNATIONAL REAL ESTATE

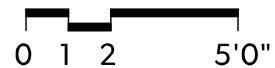
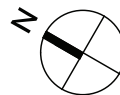
All information furnished regarding this property is from sources deemed reliable but no warranty or representation is made to the accuracy thereof.

LOWER FLOOR



FLOOR	FINISHED	UNFINISHED	TOTAL
MAIN	1006	0	1006
UPPER	810	0	810
LOWER	0	916	916
TOTAL	1816	916	2732

OTHER AREAS	
GARAGE	374
DECK	178
PORCH	151



2582 VANCOUVER STREET

DOCUMENT PREPARED FOR THE EXCLUSIVE USE OF

TOBY TREMBATH*

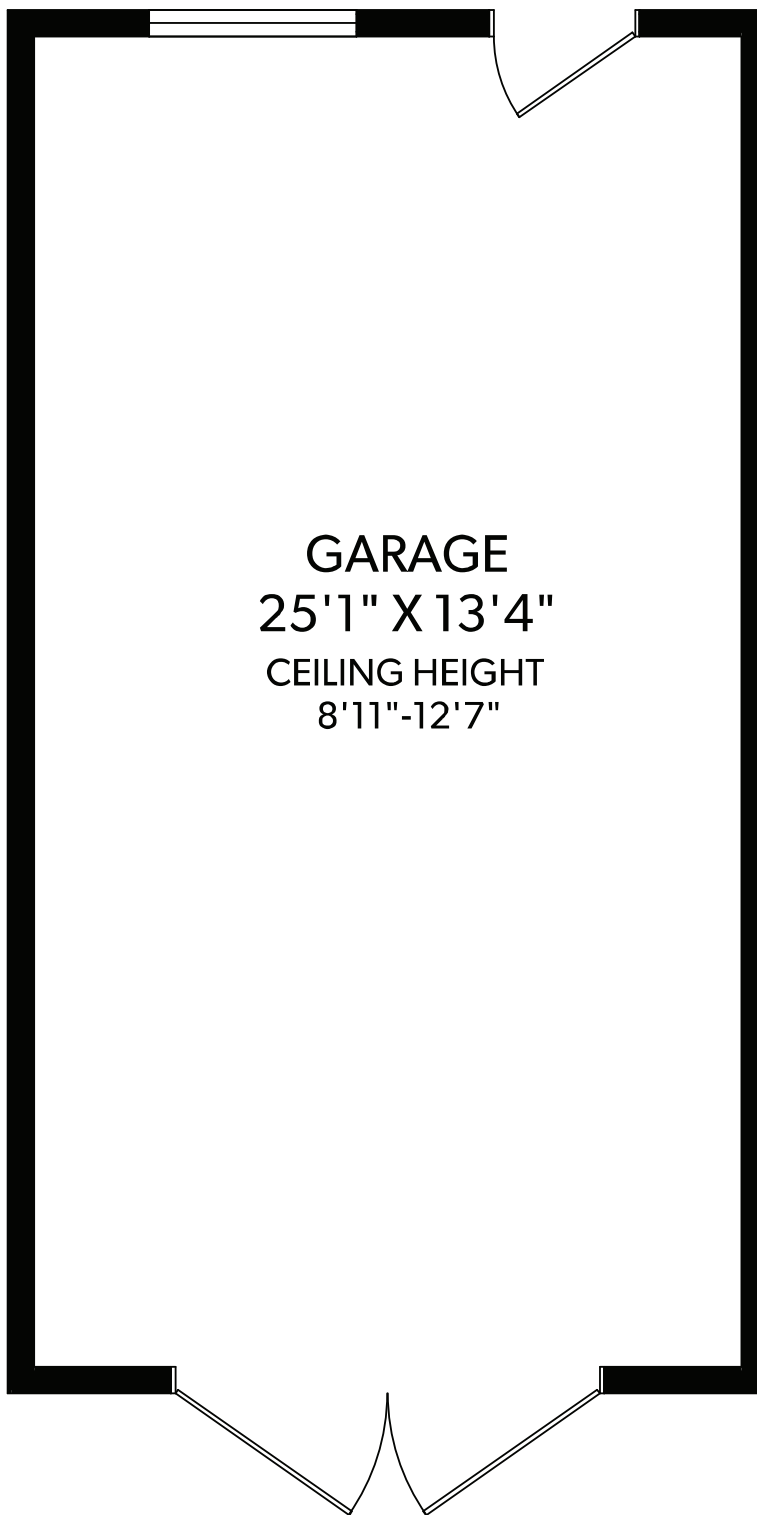
250-388-6998
ORDERS@REALFOTO.CA

*PERSONAL REAL ESTATE CORPORATION
MEASURED 02/22/2018 BY VICTORIA JONES



CHRISTIE'S
INTERNATIONAL REAL ESTATE

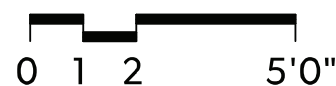
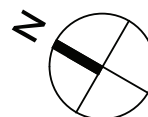
GARAGE



GARAGE
25'1" X 13'4"
CEILING HEIGHT
8'11"-12'7"

FLOOR	FINISHED	UNFINISHED	TOTAL
MAIN	1006	0	1006
UPPER	810	0	810
LOWER	0	916	916
TOTAL	1816	916	2732

OTHER AREAS	
GARAGE	374
DECK	178
PORCH	151



250-388-6998
ORDERS@REALFOTO.CA

2582 VANCOUVER STREET

DOCUMENT PREPARED FOR THE EXCLUSIVE USE OF

TOBY TREMBATH*

*PERSONAL REAL ESTATE CORPORATION
MEASURED 02/22/2018 BY VICTORIA JONES



CHRISTIE'S
INTERNATIONAL REAL ESTATE