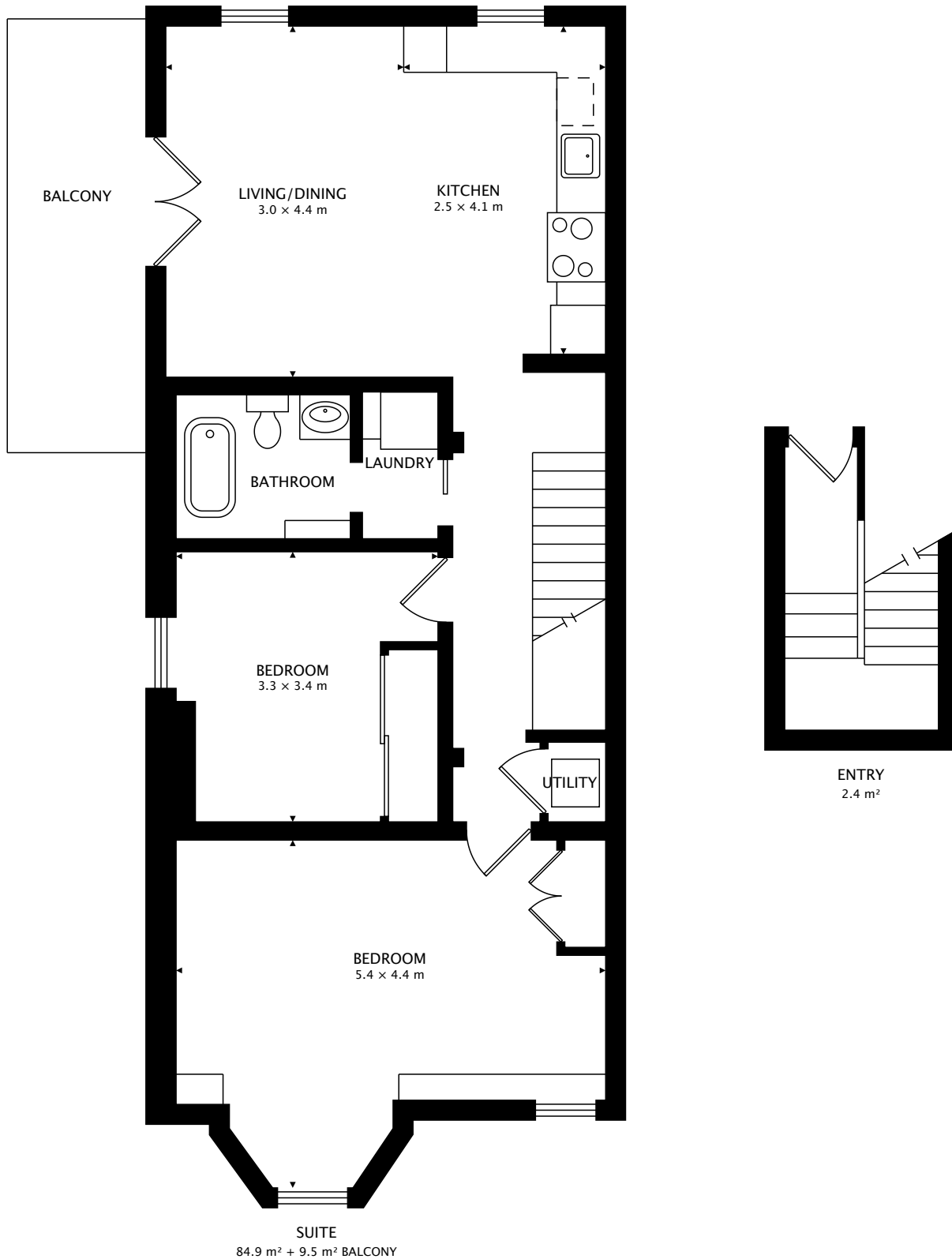


10 SYLVAN AVE #3
TORONTO, ON M6H 1G3, CANADA



TOTAL
87.3 m² + 9.5 m² BALCONY)



CAPTURED ON: 28 JUN 2018
DIMENSIONS, AREAS, LAYOUTS AND DETAILS ARE APPROXIMATE
AND SHOULD BE CONSIDERED ILLUSTRATIVE ONLY.

Corinne McCabe
ABR, Broker
Bosley Real Estate Ltd.
D: 416-888-9842
cmccabe@bosleyrealestate.com
<http://www.corinnemccabe.com>