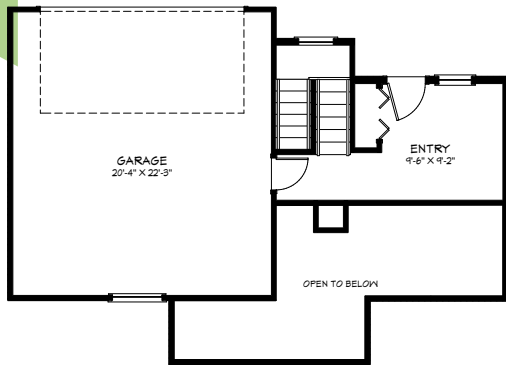




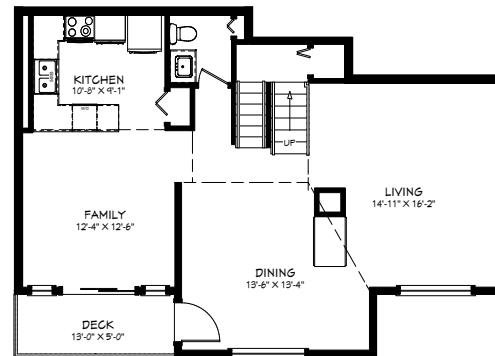
PRESENTED BY:  
**ALEX JOPSON**  
SUTTON GROUP - WEST COAST REALTY  
☎ 604.626.1483  
✉ alex@citytosuburb.ca  
🌐 www.citytosuburb.ca



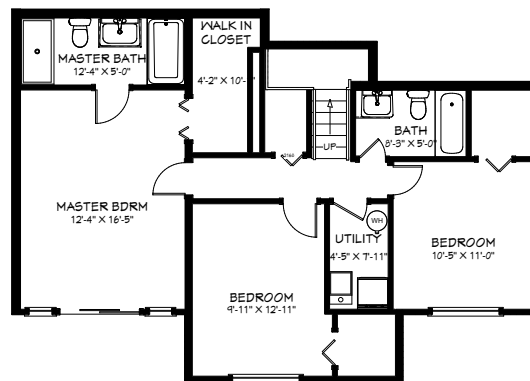
# 1103 Bennet Dr Port Coquitlam, BC



ENTRY LEVEL LIVING AREA  
211 SQ. FT.



MAIN FLOOR LIVING AREA  
819 SQ. FT.



GROUND LEVEL  
LIVING AREA  
244 SQ. FT.

**ALEX JOPSON**  
604.626.1483  
alex@citytosuburb.ca

**DERI JOPSON**  
604.626.1473  
deri@citytosuburb.ca

**JERRIT BATES**  
604.866.4359  
jerrit@citytosuburb.ca