



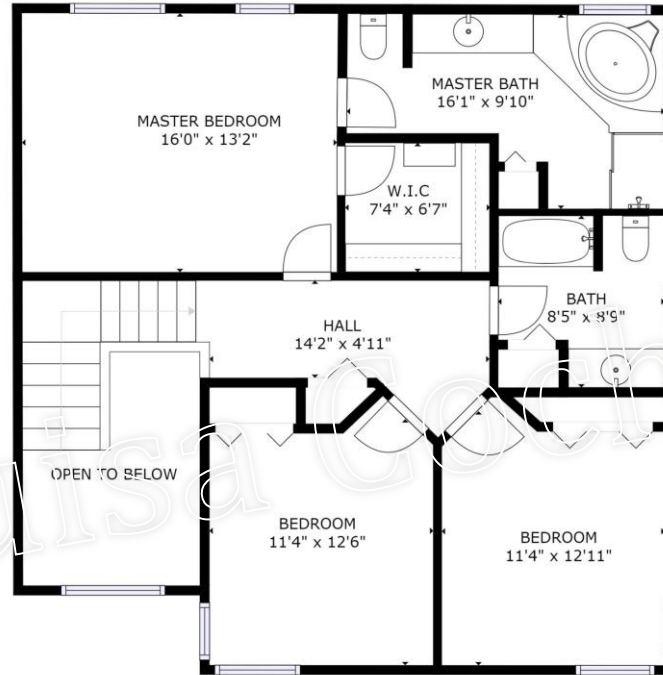
ROYAL LEPAGE
**RED
DIAMOND
AWARD**

Floorplans ~ 32 Kestrel Drive



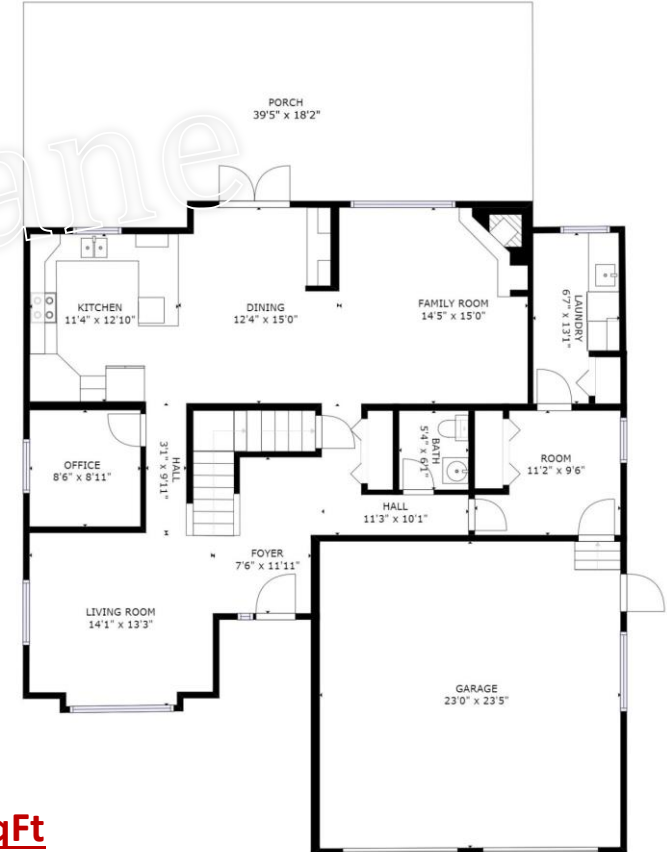
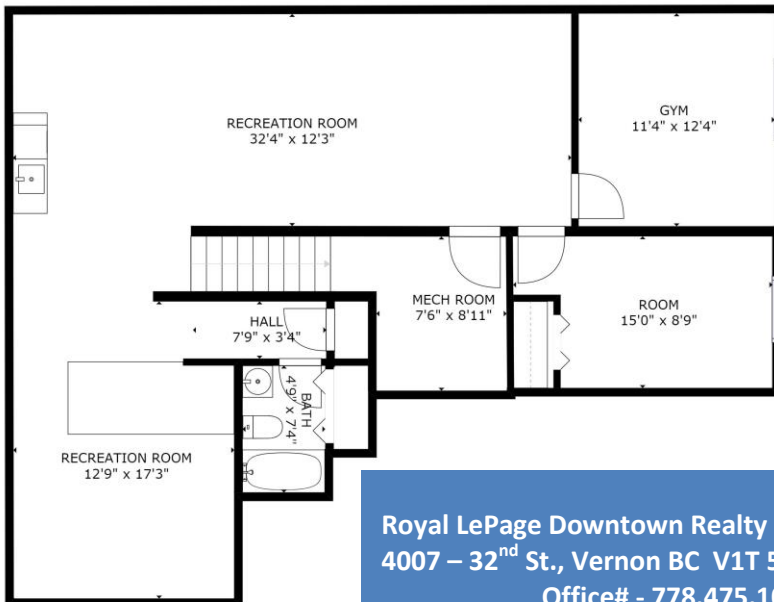
Heather Angel
Licensed Realtor®

Louisa
Cochrane



Upper Level – 1006 sq.ft

Lower Level – 1232 sq.ft



Main Level – 1394 sq.ft

Total – 3,632 Fin. SqFt

Royal LePage Downtown Realty
4007 – 32nd St., Vernon BC V1T 5P2



Office# - 778.475.1089 * Cell# - 250.550.6561 * Email - Louisa@realvernon.ca