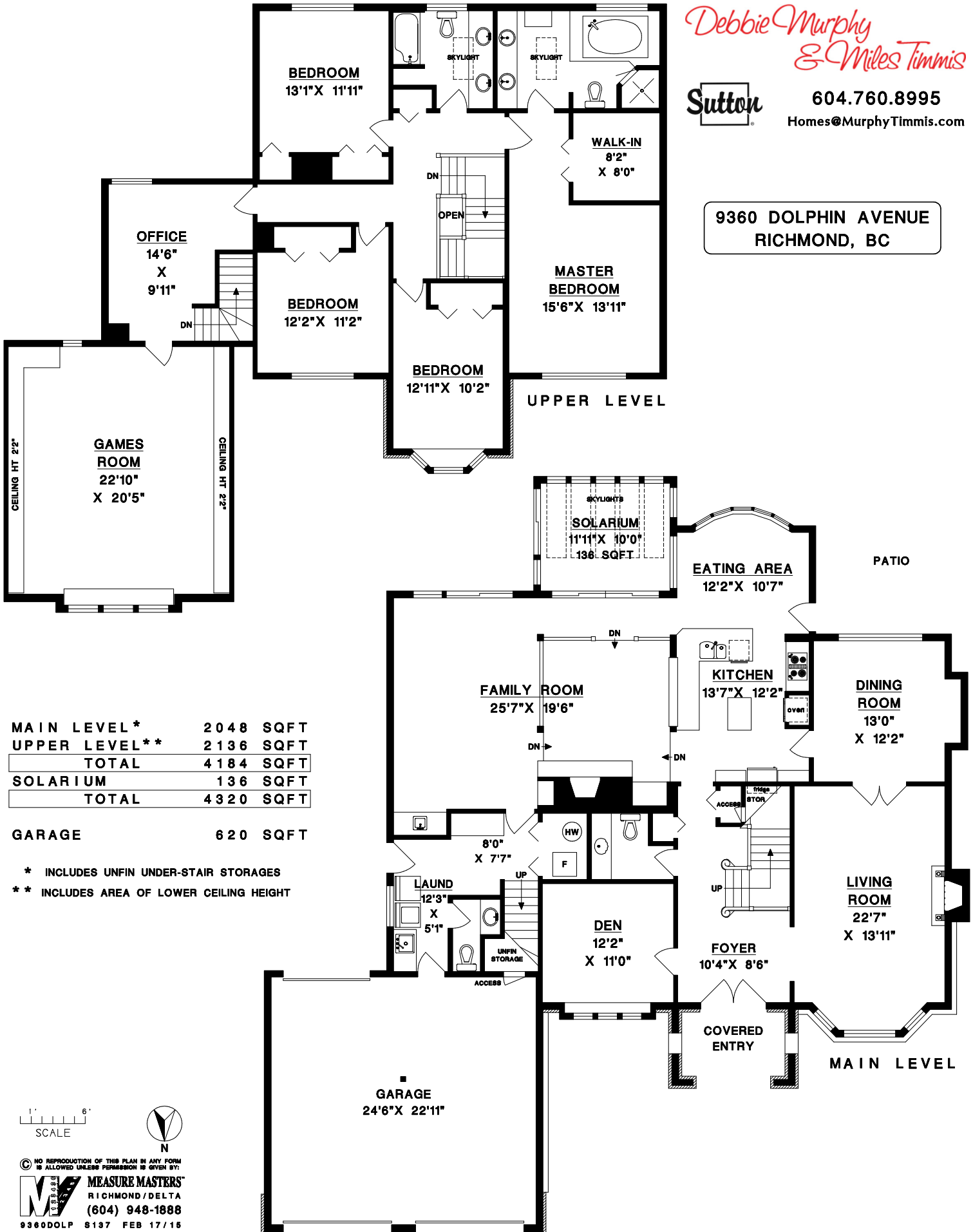


Debbie Murphy
& Miles Timmis



604.760.8995
Homes@MurphyTimmis.com

9360 DOLPHIN AVENUE
RICHMOND, BC



MAIN LEVEL *	2048	SQFT
UPPER LEVEL **	2136	SQFT
TOTAL	4184	SQFT
SOLARIUM	136	SQFT
TOTAL	4320	SQFT

GARAGE 620 SQFT

- * INCLUDES UNFIN UNDER-STAIR STORAGES
- ** INCLUDES AREA OF LOWER CEILING HEIGHT



NO REPRODUCTION OF THIS PLAN IN ANY FORM IS ALLOWED UNLESS PERMISSION IS GIVEN BY:
MEASURE MASTERS
RICHMOND/DELTA
(604) 948-1888
9360DOLP 8137 FEB 17/15