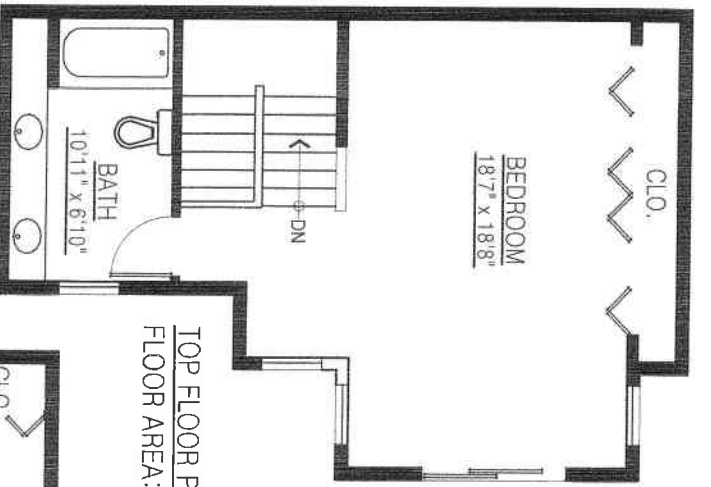
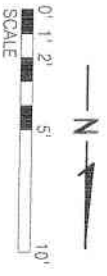
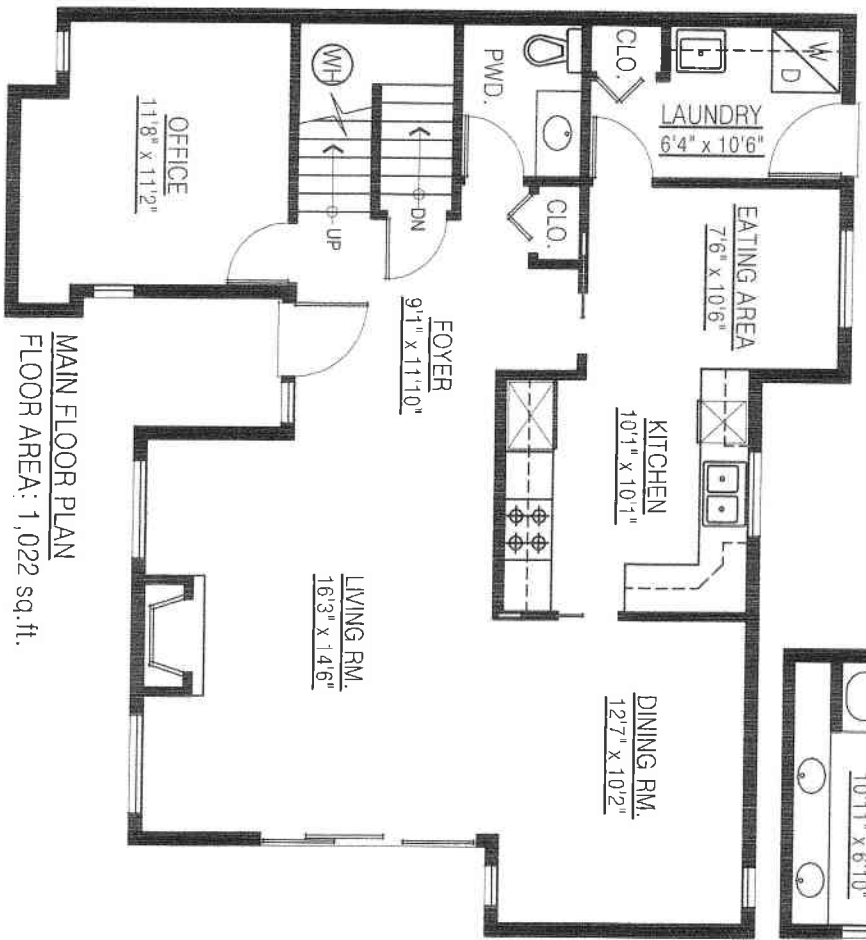


**2915 Willow St.
Vancouver, BC**

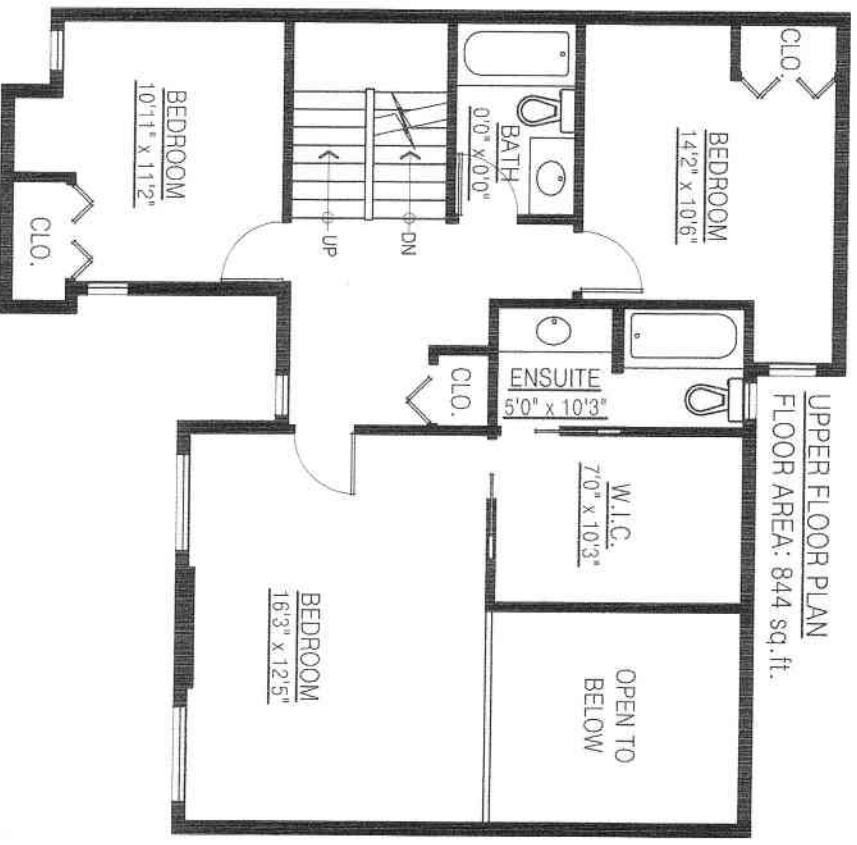
Main Floor:	1,022 sq. ft.
Upper Floor:	844 sq. ft.
Top Floor:	459 sq. ft.
Total:	2,325 sq. ft.



TOP FLOOR PLAN
FLOOR AREA: 459 sq. ft.



MAIN FLOOR PLAN
FLOOR AREA: 1,022 sq. ft.



UPPER FLOOR PLAN
FLOOR AREA: 844 sq. ft.