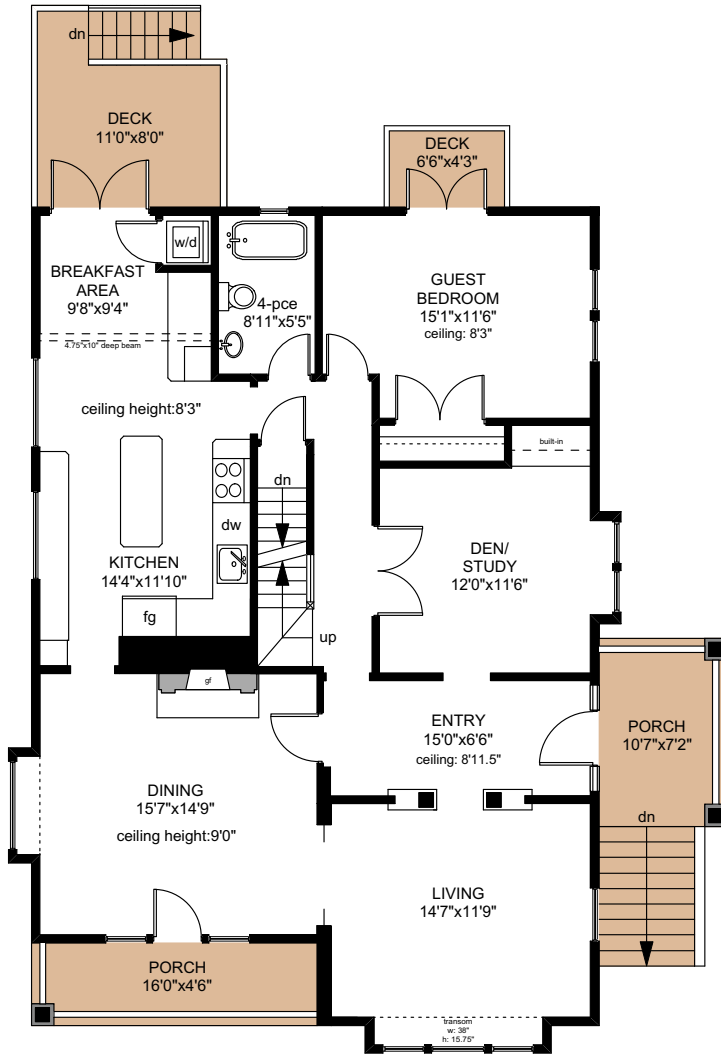
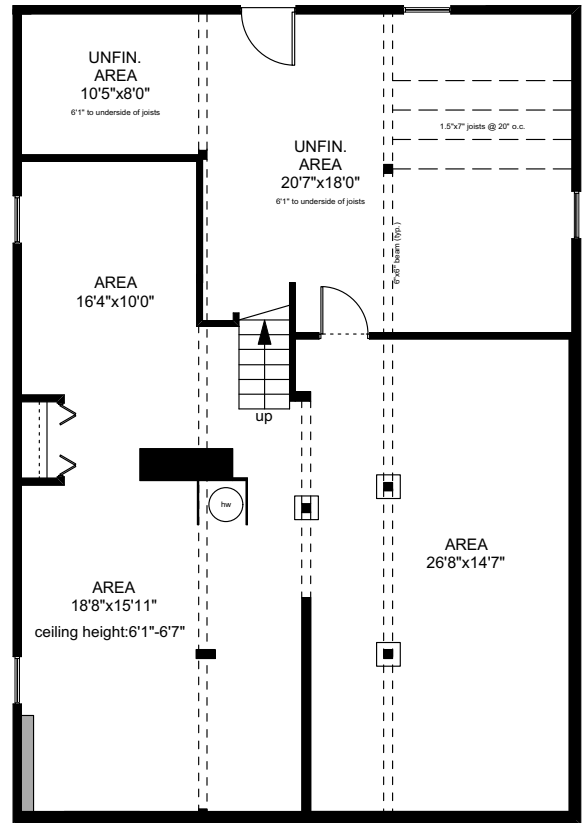
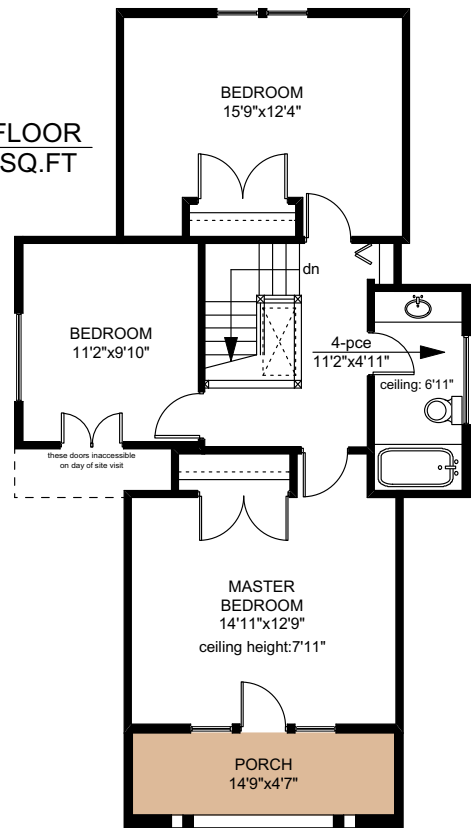


1252 OXFORD STREET

UPPER FLOOR
790 SQ.FT

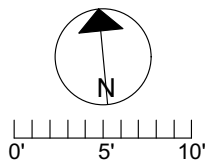


MAIN FLOOR
1437 SQ.FT



LOWER FLOOR
1478 SQ.FT

	FINISHED SQ. FT.	UNFINISHED SQ. FT.	TOTAL SQ. FT.
MAIN	1437	0	1437
UPPER	790	0	790
LOWER	997	481	1478
TOTAL	3224	481	3705
PORCHES	0	129	129
DECKS	0	221	221



PREPARED FOR THE EXCLUSIVE USE OF
TOBY TREMBATH & KEVIN KOETKE
OF NEWPORT REALTY

MEASURED ON: 03/30/16
DRAWING FILE: 13379fm

Tafemeasure VICTORIA, B.C.
Ph. 883.8894
www.tafemeasure.com