



# MICHELE COLLINS

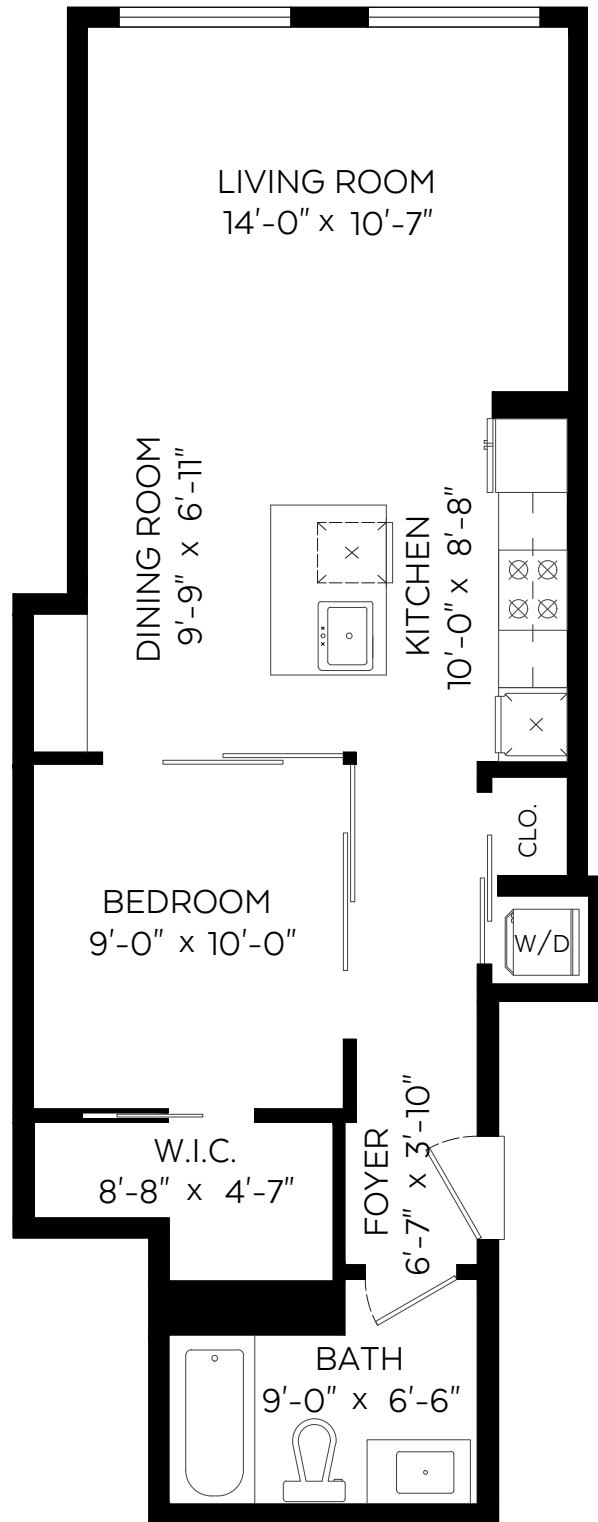
604.644.6520 michelecollins@royallepage.ca  
Royal LePage Sussex www.michelecollins.com

#308-2468 Bayswater Street,  
Vancouver, B.C.

Main Floor:

640 sq.ft.

SCALE



Measured on: April 17, 2018

The floor plan is not suitable for architectural/construction and is covered under E&O. © Excelsior Measuring Inc. 2018. All rights reserved for Excelsior Measuring Inc. Users shall not publish and distribute such material (in whole or in part) and/or incorporate it in other works in any form.



NORTH

