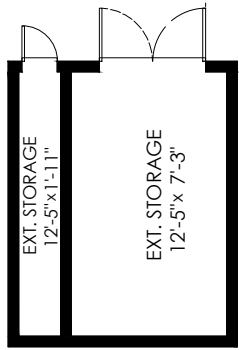
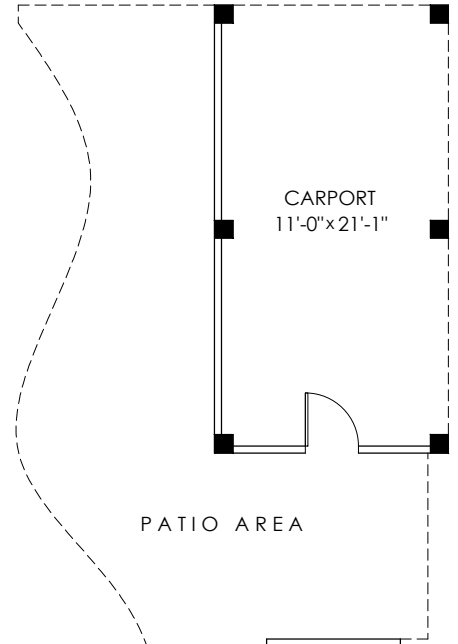
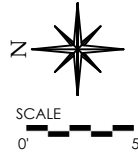


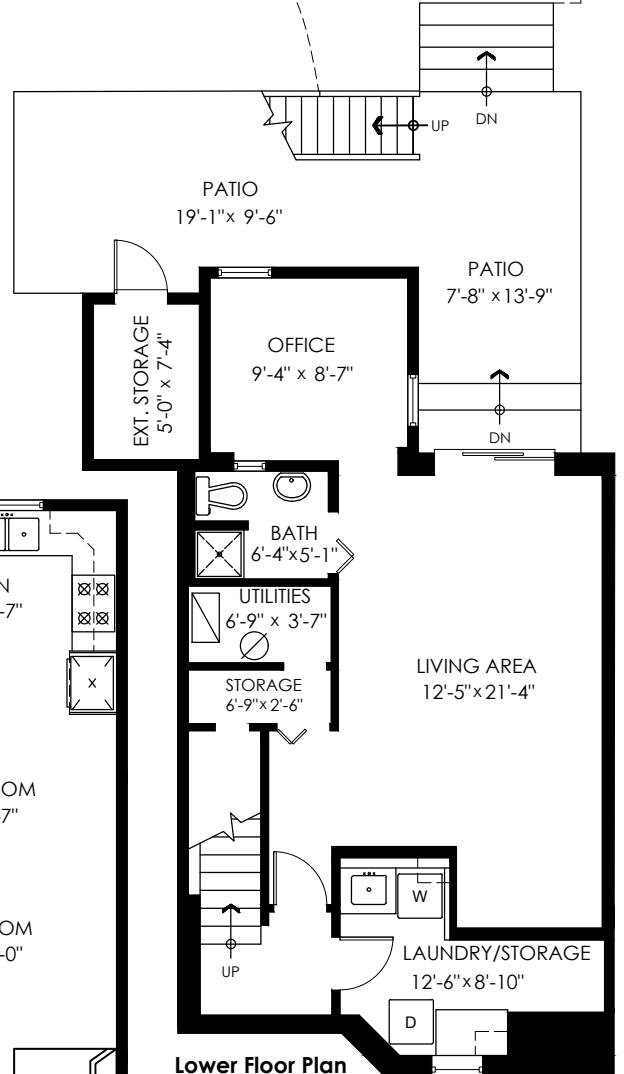
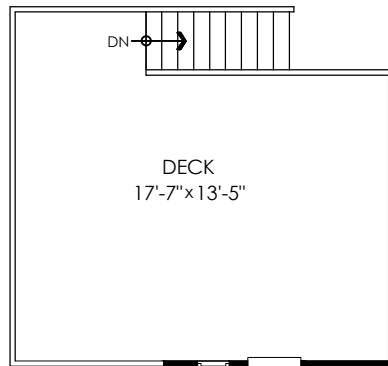
1196 Deep Cove Rd, North Vancouver

Main Floor:	585 sq.ft.
Upper Floor:	562 sq.ft.
Lower Floor:	675 sq.ft.
Total:	1,822 sq.ft.

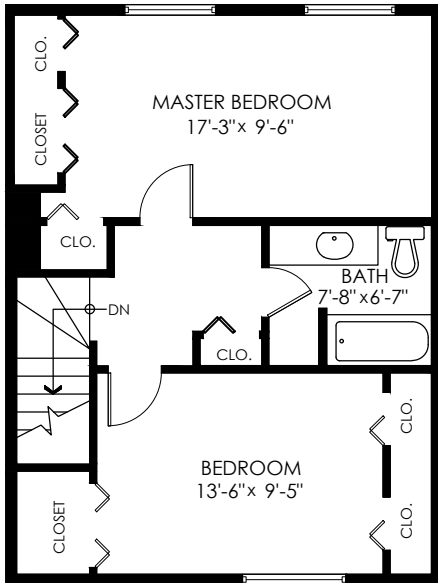
Carport:	232 sq.ft.
Patio:	242 sq.ft.
Ext. Storages:	190 sq.ft.
Deck:	255 sq.ft.
Porch:	37 sq.ft.
Total Extras:	956 sq.ft.



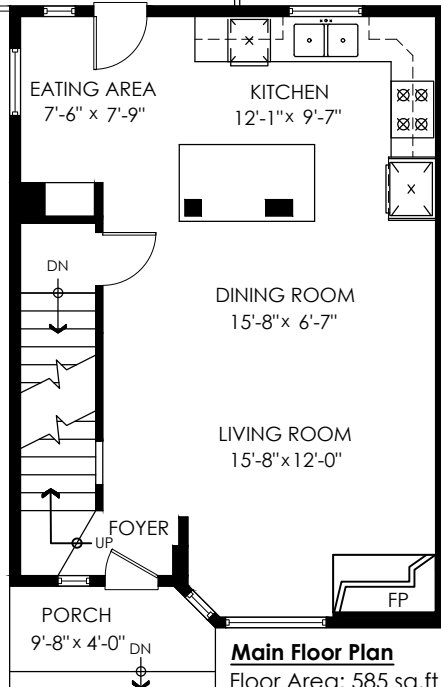
Ext. Storage Floor Plan
Floor Area: 145 sq.ft.



Lower Floor Plan
Floor Area: 675 sq.ft.
Ceiling Height: 7'-7"



Upper Floor Plan
Floor Area: 562 sq.ft.
Ceiling Height: 8'



Main Floor Plan
Floor Area: 585 sq.ft.
Ceiling Height: 7'-11"