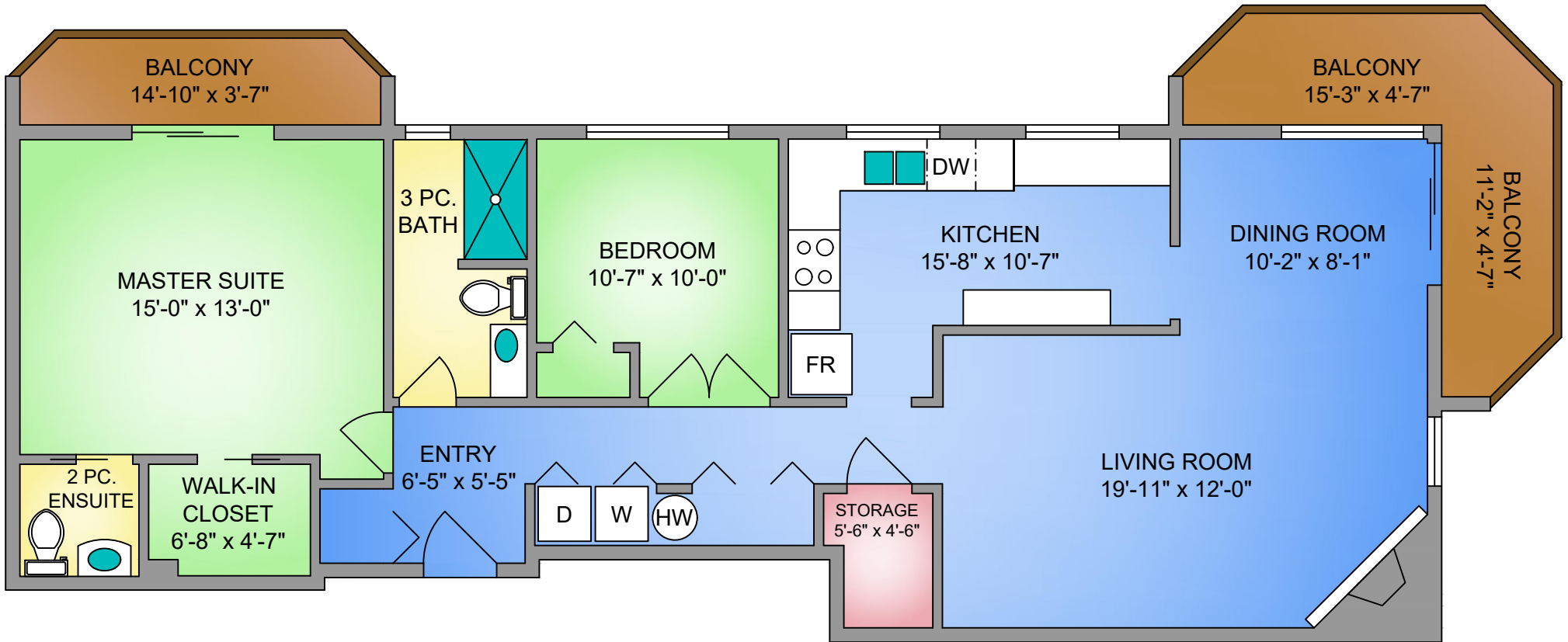
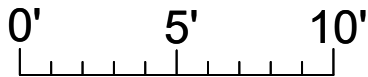


**UNIT 202 - 720 VANCOUVER STREET**  
**1120 SQ. FT.**  
**8' CEILING HEIGHT**



NORTH



SCALE



250-884-9753  
 matt@propermeasure.com  
 www.propermeasure.com



PH: 778.432.4611 | E: TEAM@MODERNREV.COM  
 WWW.MODERNREV.COM

SAIRA WATERS\*, TASHA MEDVE\*  
PERSONAL REAL ESTATE CORPORATION & LINDSAY BLOCK-GLASS  
**MODERN** REAL ESTATE TEAM  
**ROYAL LEPAGE**  
 Coast Capital Realty

UNIT 202 - 720 VANCOUVER		
MAY 7, 2018		
PREPARED FOR THE EXCLUSIVE USE OF THE MODERN REAL ESTATE TEAM <small>PLANS MAY NOT BE 100% ACCURATE, IF CRITICAL BUYER TO VERIFY.</small>		
FLOOR	AREA (SQ. FT.)	
	FINISHED	BALCONY
SECOND	1120	176