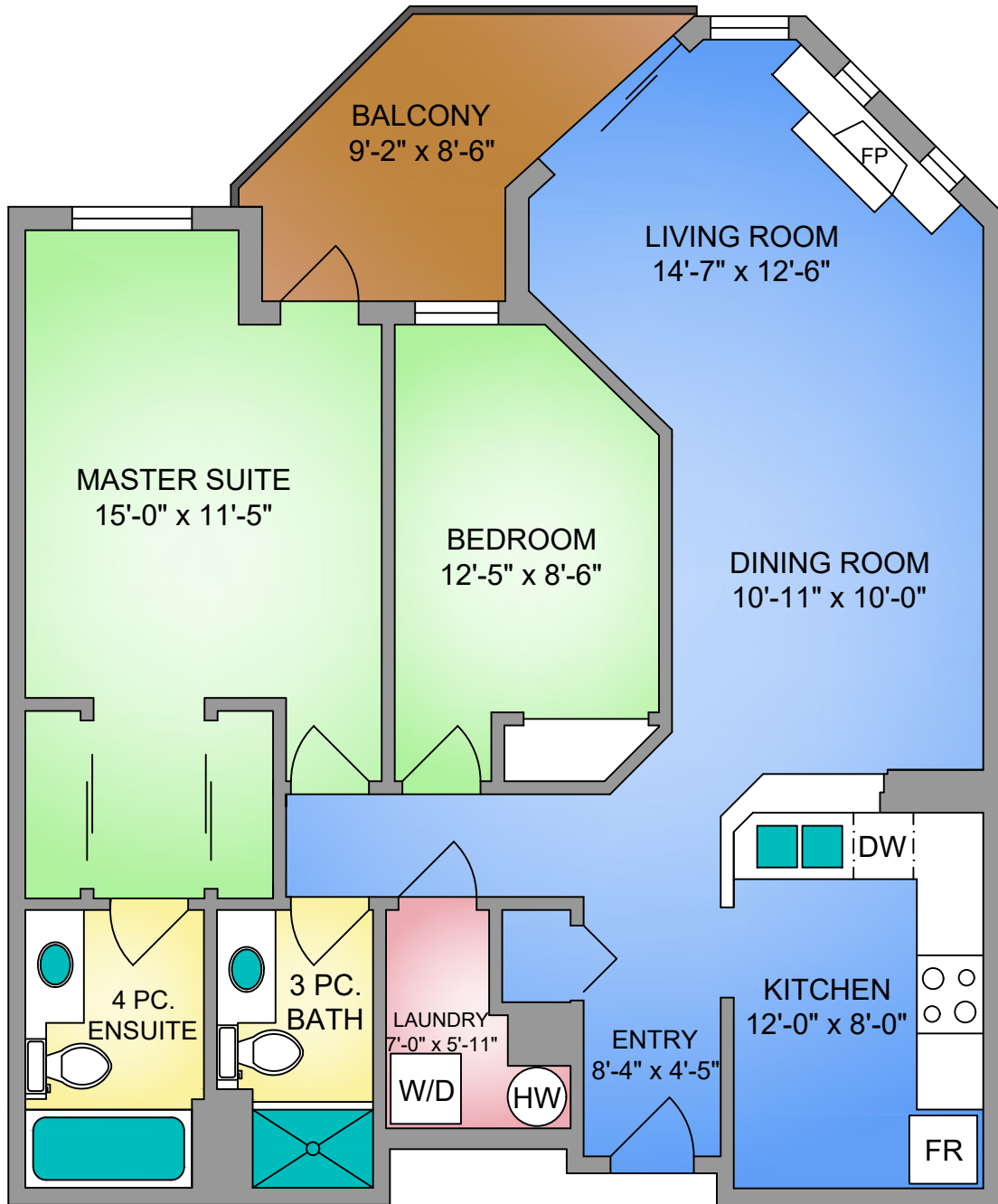


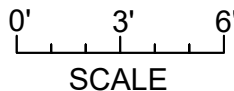
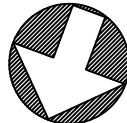
UNIT 314 -1083 TILICUM ROAD

996 SQ. FT.

8' CEILING HEIGHT



NORTH



UNIT 314 - 1083 TILLICUM ROAD

AUGUST 26, 2020

PREPARED FOR THE EXCLUSIVE USE OF MODERN REAL ESTATE TEAM
PLANS MAY NOT BE 100% ACCURATE, IF CRITICAL BUYER TO VERIFY.

FLOOR	AREA (SQ. FT.)	
	FINISHED	BALCONY
THIRD	996	78



Sales Representatives
Tasha Medve*, Saira Waters*,
Lindsay Block-Glass, Sonya Conn
*Personal Real Estate Corporation

MODERN
REAL ESTATE TEAM
778.432.4611 | team@modernrev.com
www.modernrev.com

ROYAL LEPAGE
REALTY
Coast Capital Realty
INDEPENDENTLY OWNED AND OPERATED

PROPERMEASURE
PRECISION

250-884-9753
matt@propermeasure.com
www.propermeasure.com