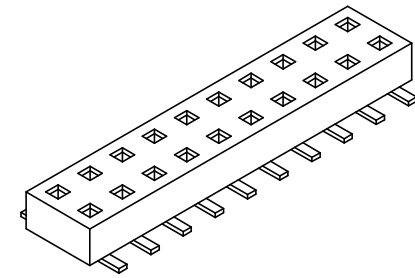
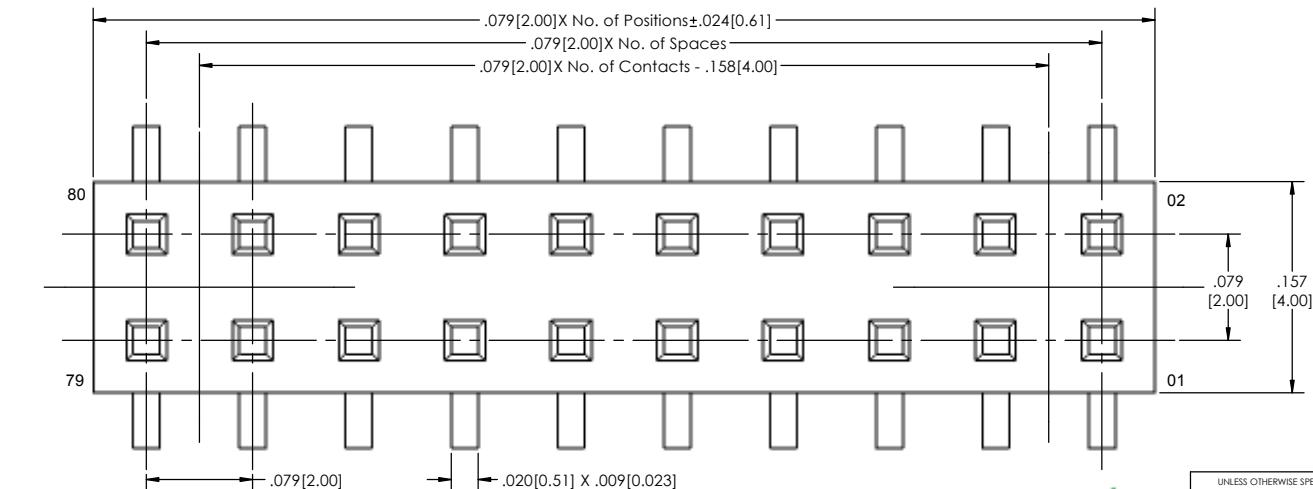
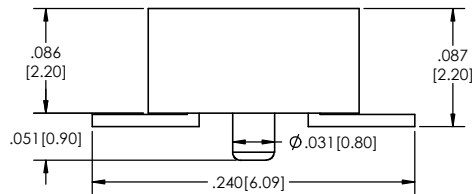


[illegible]

ULSMBC-2 XX - D - 02 - XX - V - XXX - XX - X - XX - LF

(A) (B) (C) (D) (E) (F) (G) (H) (I) (J)

- A. Pins Per Row
 - 1 through 40
- B. Row Specification
 - D= Dual Row
- C. Surface Mount
- D. Plating Options
 - See Plating Options below
- E. Vertical
- F. Polarized Position
 - Leave blank if not needed
 - If required, specify empty pin position
 - e.g. 012 for Pin 12
- G. Packing Information
 - TR= Tape and Reel
 - TB= Tube
- H. Pad
 - P= Plastic
 - K= Kapton
 - O= No Pad
 - If left blank, packaging at MLE's discretion
 - Pad may be metal, mylar or Plastic
- I. Alignment Pin
 - Leave blank
 - AP= With
- I. Lead Free

Plating options	
G	-10 μ Gold on Contact Area/ Flash on Tail
T	-Matte Tin all Over
GT	-10 μ Gold on Contact Area/ Matte Tin on Tail
H	-30 μ Gold on Contact Area/ Matte Tin on Tail
F	-Gold Flash over Entire Pin
FT	-Gold Flash on Contact Area/ Matte Tin on Tail

Specifications:

- Insertion Force: Single Contact Only- H Plating:
1.8oz. [0.50N] avg with .0197 [0.050mm] sq. pin
- Withdrawal Force: Single Contact only- H Plating:
0.6oz. [0.17N] avg with .0197 [0.50mm] sq. pin
- Current Rating: 3.0 Ampere
- Insulation Resistance: 1000M Ohms Min.
- Dielectric Withstanding: 500V AC
- Contact Resistance: 20M Ohms Max.
- Operation Temperature: -40°C to +105°C
- Max. Process Temperature
 - Peak: 260°C up to 10 secs.
 - Process: 230°C up to 60 secs.
 - Wave: 260°C up to 6 secs.
 - Reflow: 260°C up to 10 secs.
 - Manual Solder: 350°C up to 5 secs.


Materials:
Contact Material: Phosphor Bronze
Insulator Material: Nylon 6T
Plating: Au or Sn over 50μ" (1.27) N

Mates with:	
BSTC	TSHR
BSTCM	TSHRE
CSTCR	TSHS
BSTCRSM	TSHSCM
BSTS	TSHC
TBSTC	TTSHCR
TBSTCM	TTSHCRE
TBSTS	TTSHR
TSHC	TTSHRE
TSHCR	TTSHS
TSHCRE	TTSHSM
TSHCRSM	

Tails may be clipped to achieve specific dimensions.
Products cut to specific sizes are uncancellable/ nonreturnable.
Parts are subject to change without notice.



PROPRIETARY AND CONFIDENTIAL
THE INFORMATION CONTAINED IN THIS DRAWING IS THE SOLE PROPERTY OF Major League Electronics. ANY REPRODUCTION IN PART OR AS A WHOLE WITHOUT THE WRITTEN PERMISSION OF Major League Electronics IS PROHIBITED.

UNLESS OTHERWISE SPECIFIED:				NAME DATE		
DIMENSIONS ARE IN INCHES TOLERANCES: ONE DECIMALS ± 100 TWO DECIMAL ± 100 THREE DECIMAL ± 005 FOUR DECIMAL ± 002		DRAWN EOW 01/20/15				
		CHECKED GWE 01/20/15				
		ENG APPR.				
		MFG APPR.				
		INTERPRET GEOMETRIC TOLERANCING PER:		ADDRESS:		TITLE: ULSMBC-2 SERIES SIZE DWG. NO. REV C C
		MATERIAL		2533 Centennial Blvd. Jeffersonville, IN 47130 Phone: 812-670-4174 Fax: 812-670-4175 E-Mail: mie@electronics.com		
NEXT ASSY USED ON		FINISH				
APPLICATION		DO NOT SCALE DRAWING		SCALE 14:1		
						SHEET 1 OF 1