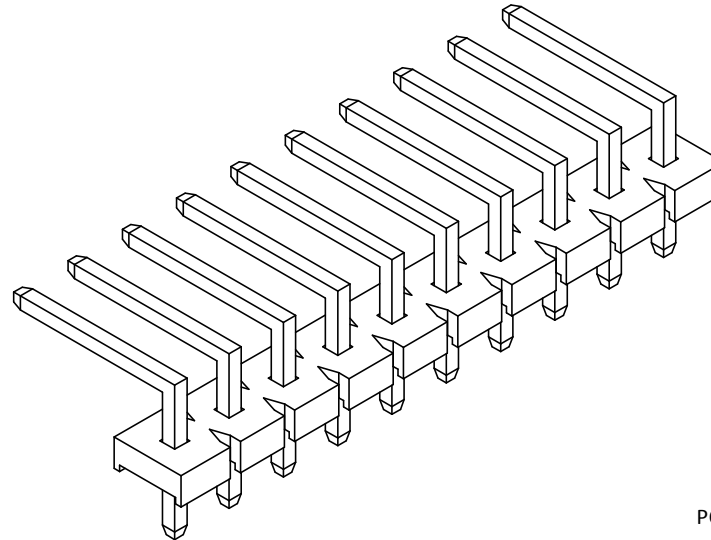
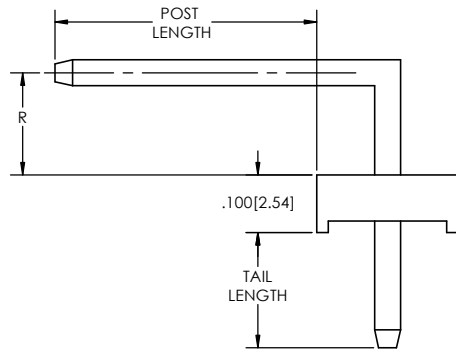
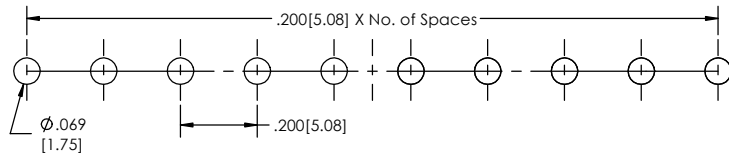
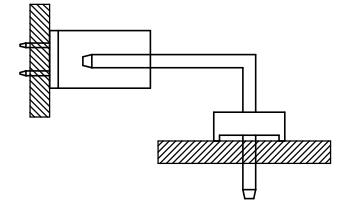


Recommended P.C. Board Layout
SCALE 4:1



APPLICATION



PC200HR [XX] - [S] - [XX] - [T] - [LF]
(A) (B) (C) (D) (E)

- A. Pins Per Row - 1 through 20
- B. Row Specification - S= Single Row
- C. Pin Options - See Pin Options below
- D. Plating Options - See Plating Options below
- E. Lead Free

Mates with:
PC200S-XX-S-02
PC200S-XX-S-04

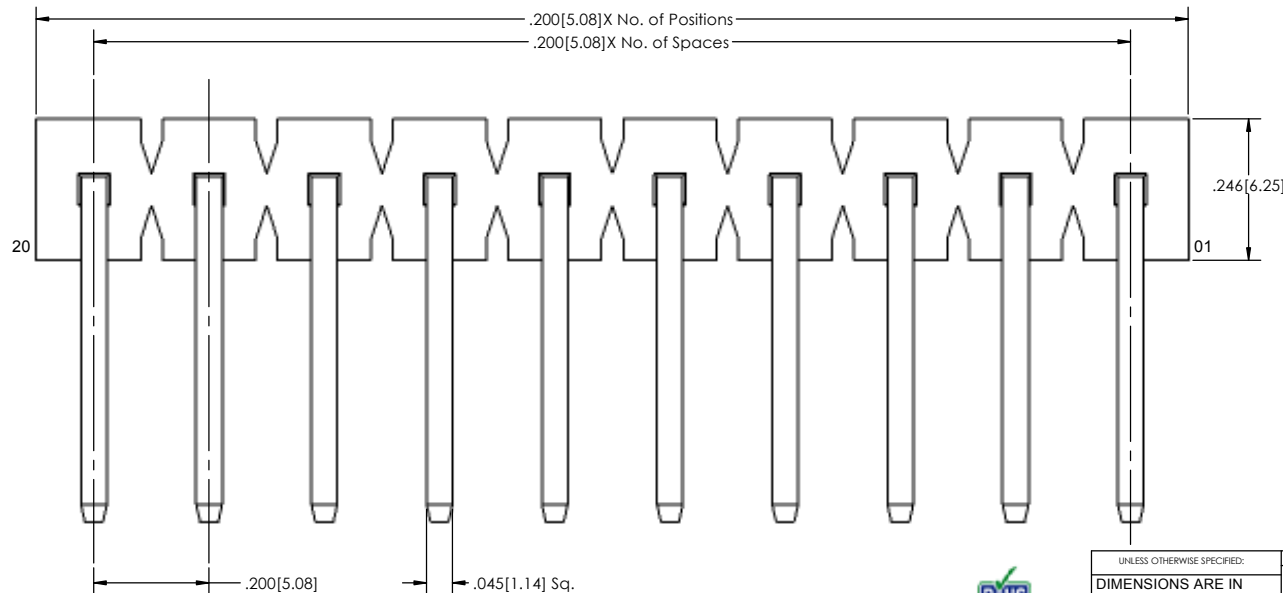
Pin Options		
Post Length	Tail Length	R Dimension
.318[8.08mm]	.180[4.57mm]	.100[2.54mm] 06
.544[13.82mm]	.156[3.96mm]	.195[4.95mm] 14

Plating options
T Matte Tin all Over

Specifications:
Current Rating: 7.9 Ampere
Insulation Resistance: 500M Ohms Min.
Dielectric Withstanding: 1500V AC
Contact Resistance: 20M Ohms Max.
Operation Temperature: -55°C to +125°C
Max. Process Temperature
IR Reflow: 280°C up to 10 secs.
Wave: 250°C up to 10 secs.
Manual Solder: 380°C up to 5 secs.

Materials:
Contact Material: Brass
Insulator Material: LCP, UL94V-0
Plating: 120µ" Matte Tin over 50µ" (1.27) Ni
Tails may be clipped to achieve specific dimensions.

Products cut to specific sizes are uncancellable/ nonreturnable.
Parts are subject to change without notice.



PROPRIETARY AND CONFIDENTIAL
THE INFORMATION CONTAINED IN THIS DRAWING IS THE SOLE PROPERTY OF Major League Electronics. ANY REPRODUCTION IN PART OR AS A WHOLE WITHOUT THE WRITTEN PERMISSION OF Major League Electronics IS PROHIBITED.

UNLESS OTHERWISE SPECIFIED:		NAME		DATE
DIMENSIONS ARE IN INCHES		DRAWN	EOW	01/23/14
TOLERANCES:		CHECKED	GWE	01/23/14
ONE DECIMALS ±.100		ENG APPR.		
TWO DECIMAL ±.005		MFG APPR.		
THREE DECIMAL ±.002		ADDRESS:		
FOUR DECIMAL ±.002		2533 Centennial Blvd.		
		Jeffersonville, IN 47130		
		Phone: 812-670-4174		
		Fax: 812-670-4175		
		E-Mail: mle@mllelectronics.com		
NEXT ASSY		USED ON		TITLE: PC200HR
APPLICATION		DO NOT SCALE DRAWING		SIZE DWG. NO. C
				REV A
				SCALE 6:1
				SHEET 1 OF 1

