

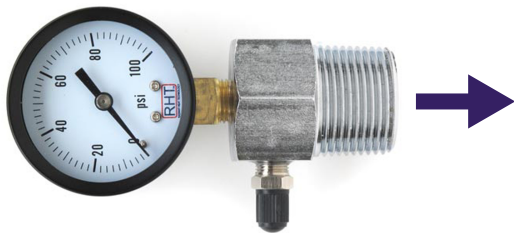


RADIANT HEAT TECHNOLOGY

Pressure Testing with the RHT PT-M Fitting

close this valve →

For the tapered pipe thread connection use a layer of thread sealer, then a wrap of teflon tape, followed by another layer of thread sealer.



Using the schrader valve, pressurise your manifold and PEX tubing to 50psi maximum, if you are required to test to a higher pressure, we have alternate pressure testing solutions to suit your needs.

