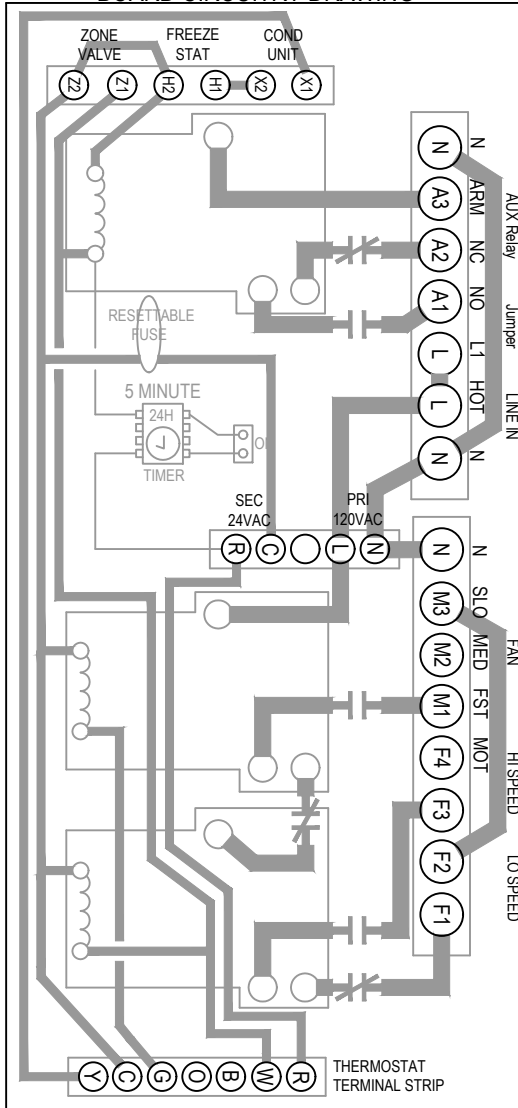


H1 - FREEZE STAT TERMINAL
H2 - FREEZE STAT TERMINAL
X1 - COOLING MODE 24v OUTPUT
X2 - 24 VAC COMMON
Z1 - HEATING MODE 24v OUTPUT
Z2 - 24 VAC COMMON
TR - 20 VA TRANSFORMER
(115 VAC PRIMARY, 24V SECONDARY)

CAUTION
DISCONNECT THE ELECTRIC
POWER BEFORE SERVICING
ATTENTION
DECONNECTER DU CIRCUIT
D'ALIMENTATION ELECTRIQUE
AVANT L'ENTRE-TIEN

YW - YELLOW (NEUTRAL)
R - RED (LOW SPEED)
BL - BLUE (MEDIUM SPEED)
BK - BLACK (HIGH SPEED)
WH - WHITE (NEUTRAL)
M - MOTOR
N - 115/1/60 NEUTRAL
L - 115/1/60 LINE
— - Field Wiring

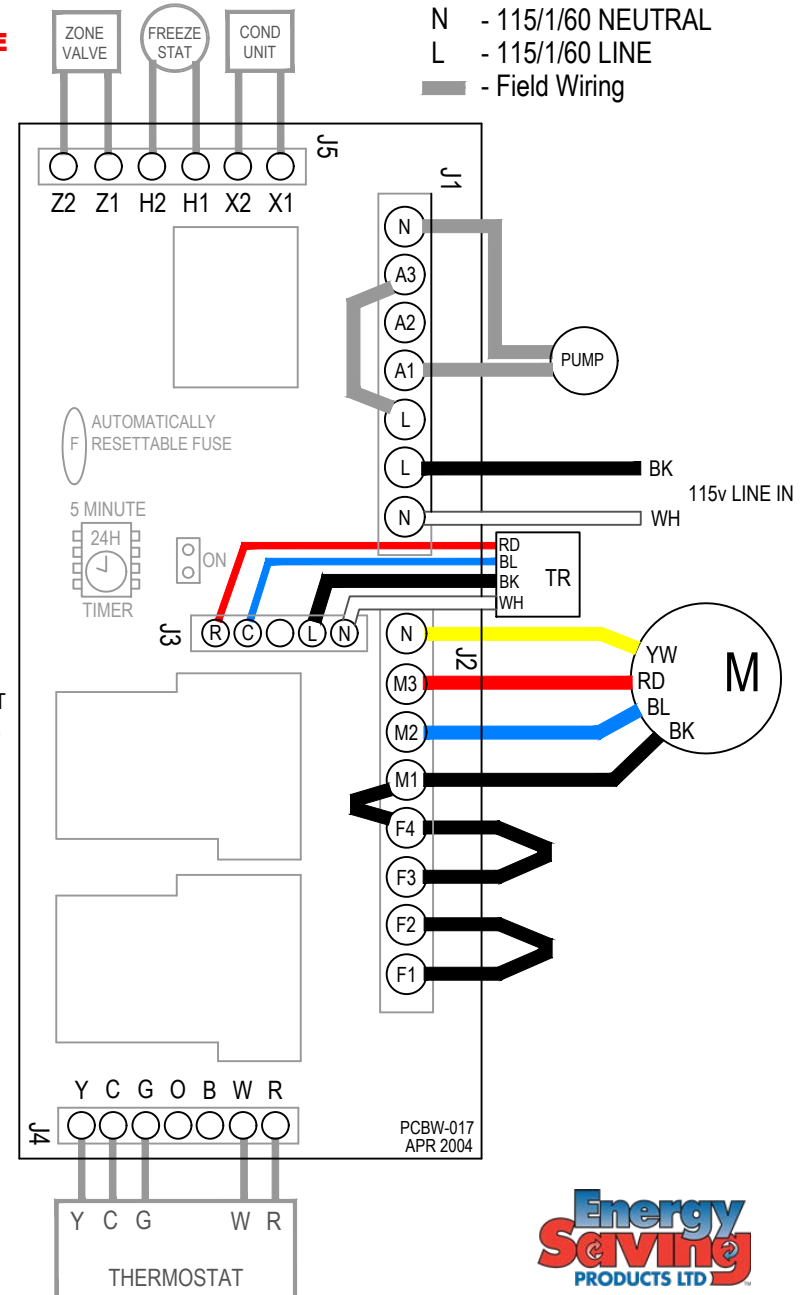
BOARD CIRCUITRY DRAWING



NOTES:

- 1) CONSTANT FAN CONTROL OR JUMPER WIRE MUST BE USED TO COMPLETE THE F1 TO F2 CIRCUIT
- 2) HEATING SPEED CONTROL OR JUMPER WIRE MUST BE USED TO COMPLETE THE F3 TO F4 CIRCUIT. HEATING SPEED CONTROL IS NOT TO BE USED ON ELECTRIC HEAT SYSTEMS.
- 3) TERMINAL F4 REQUIRES AN EXTERNAL JUMPER TO TERMINAL M1 FOR HIGH SPEED HEATING OR M2 FOR MEDIUM SPEED HEATING
- 4) AUXILIARY RELAY COMMON(A3) CAN BE USED WITH A1 AND/OR A2 AS DRY CONTACTS, ARMED 24v FROM THE 'R' TERMINAL, OR ARMED 115v FROM THE 'L' TERMINAL
- 5) 'C' TERMINAL ON BATTERY OPERATED THERMOSTAT IS NOT NEEDED FOR SOME THERMOSTATS. CONSULT THERMOSTAT INSTRUCTIONS FOR DETAILS.
- 6) SEE INSTALLATION MANUAL FOR MORE DETAILED WIRING INFORMATION.
- 7) FAILURE TO READ AND FOLLOW ALL INSTRUCTIONS CAREFULLY BEFORE INSTALLATION COULD CAUSE PERSONAL INJURY AND/OR PROPERTY DAMAGE.
- 8) THIS UNIT IS EQUIPPED WITH A TIMER OVERRIDE CIRCUIT THAT IS ACTIVATED FOR FIVE (5) MINUTES WHEN POWER IS APPLIED TO THE UNIT. CHECK JUMPER SETTING ON CIRCUIT BOARD TO ARM/DISARM. NO BLACK PLASTIC JUMPER PIN INDICATED THE TIMER IS DISARMED.

M1 - MOTOR HIGH SPEED
M2 - MOTOR MEDIUM SPEED
M3 - MOTOR LOW SPEED
F1 - CONSTANT FAN CONTROL TO RELAY
F2 - CONSTANT FAN CONTROL TO MOTOR
F3 - HEATING SPEED CONTROL TO RELAY
F4 - HEATING SPEED CONTROL TO MOTOR
A1 - AUXILIARY NORMALLY OPEN
A2 - AUXILIARY NORMALLY CLOSED
A3 - AUXILIARY COMMON
R - 24v POWER
C - 24v COMMON



- ° ENSURE THAT THE FILTER IS KEPT CLEAN AT ALL TIMES
- ° MOTOR HAS PERMANENT LUBE BEARINGS AND DOES NOT REQUIRE OILING
- ° THIS UNIT IS NOT TO BE USED DURING CONSTRUCTION OR WARRANTY IS NULL AND VOID.

Energy
Saving
PRODUCTS LTD.

WWW.HI-VELOCITY.COM