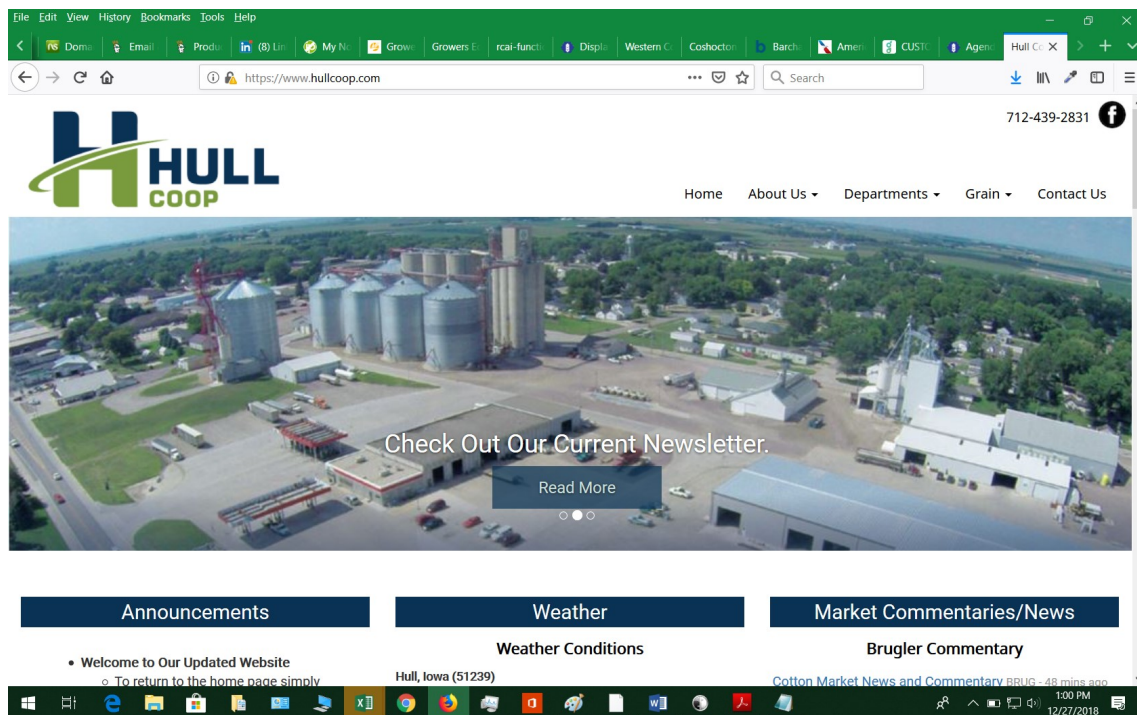


## Hull Coop Website Reference Guide

- **Homepage Quick Guide**
- **Accessing Futures, Spreads, Options & Custom Charts**
- **Mobile Quick Guide**
  - Homepage Access
  - Cash Bids Details
  - Futures, Charts, Options & Spreads



### Desktop/Large Tablet Access:

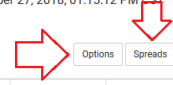
- Top right menus allow you immediate access to secondary pages.
- Homepage allows for access to Futures, Cash Bids, Weather, News, Announcements, FarmerData (customer portal) & Additional buttons at the bottom for departments.

### Futures Quotes

 Get a new quote  

Quotes retrieved on December 27, 2018, 01:15:12 PM CST

Corn (Pit)



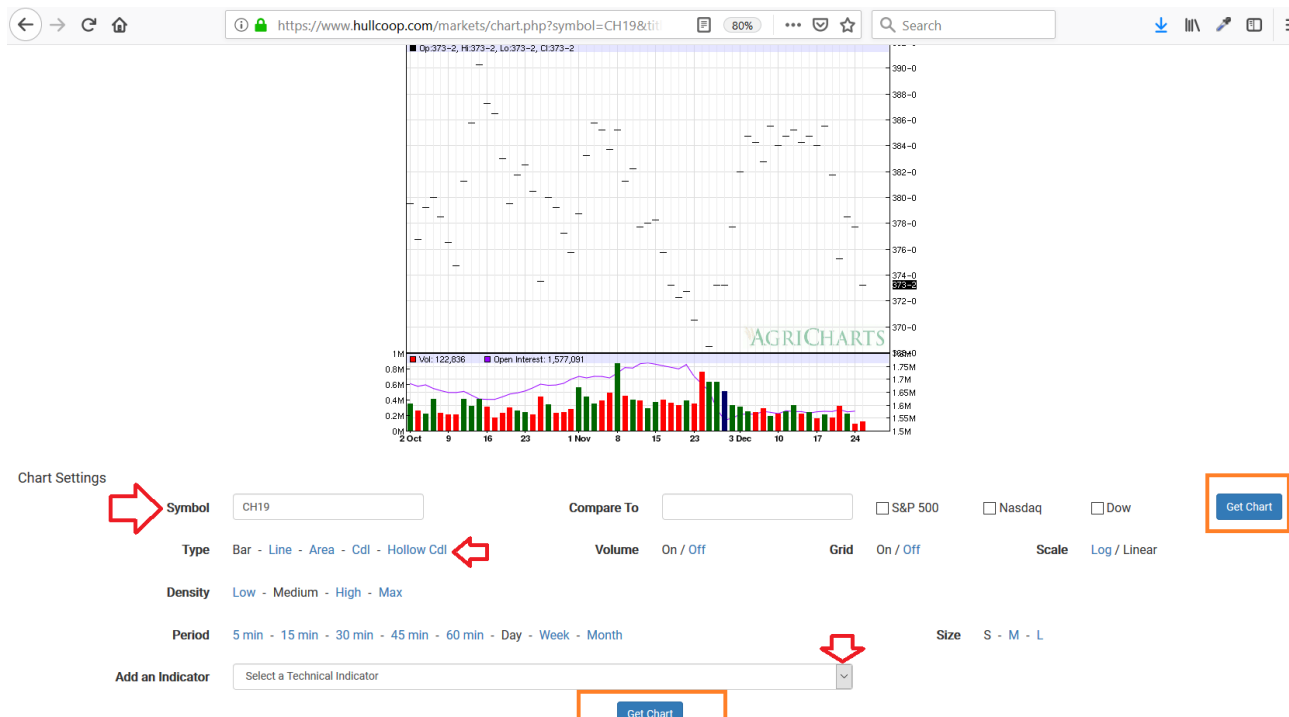
Month	Last	Change	Percent	Open	High	Low	Time	Volume	Open Interest	Previous
March 2019	373-2s	-4.4	-1.19%	0-0	373-2	373-2	12/26/2018	82550	777988	377-6
May 2019	381-2s	-4.4	-1.17%	0-0	381-2	381-2	12/26/2018	14960	227864	385-6
July 2019	388-6s	-4.0	-1.02%	0-0	388-6	388-6	12/26/2018	14644	225005	392-6
September 2019	391-2s	-3.4	-0.89%	0-0	391-2	391-2	12/26/2018	3559	114129	394-6
December 2019	395-6s	-3.0	-0.75%	0-0	395-6	395-6	12/26/2018	6366	199670	398-6

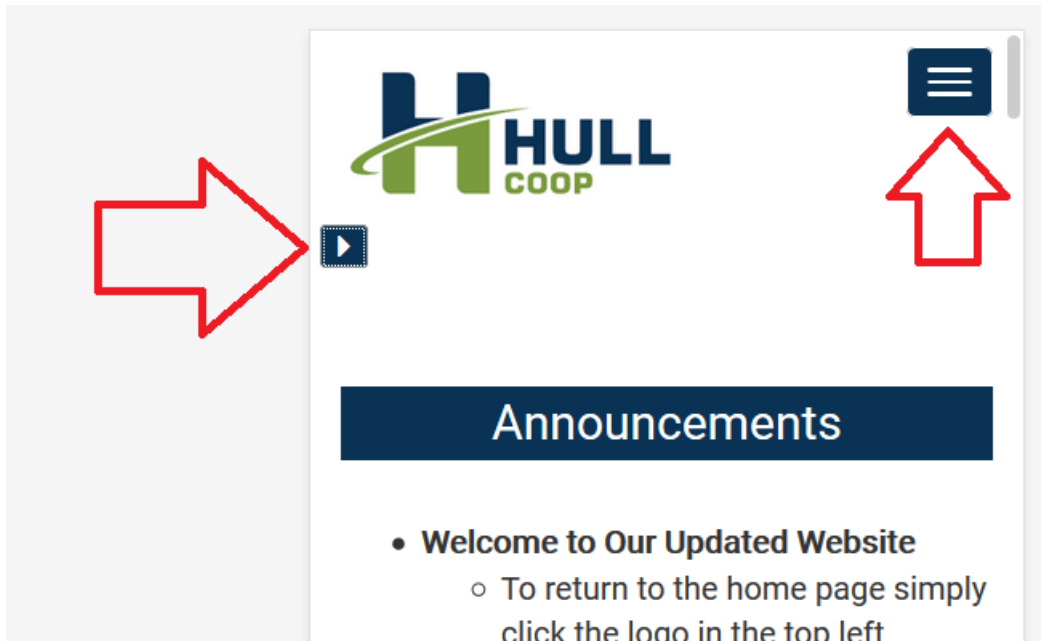
## Futures Data

- Futures are also expandable as well by clicking into the futures to view more details and even have access to Charts, Options and Spreads.

## Accessing Custom Charts:

- Click into any Futures Contract 2-3 times to access the Custom Charts.
- Once in Custom Charts you can change type, period, symbol, add studies/indicators and even compare too.
- Always click "Get Chart" to update to new settings.





### Mobile Display

- Top Right Menu will allow you to access Phone Number and Social Media
- Left “arrow” Menu will expand out allowing access to Department Pages and Additional Menus
- Homepage allows for access to Futures, Cash Bids, Weather, News, Announcements, FarmerData (customer portal) & Additional buttons at the bottom for departments.
- Cash Bids are expandable by clicking on the “blue +” button to the left of any specific bid.
- Futures are also expandable as well by clicking into the futures to view more details and even have access to Charts, Options and Spreads.



### Cash Prices

[Show CWT Prices >](#)

#### Corn

Name	Delivery End	Basis	\$ Price
+ Corn	Dec 2018	-31	\$3.4300
+ Corn	Jan 2019	-31	\$3.4300
+ Corn	Mar 2019	-31	\$3.4300
+ Corn	May 2019	-37	\$3.4475
+ Corn	Jul 2019	-35	\$3.5400
+ Corn	Oct 2019	-45	\$3.5100

#### Soybeans

Name	Delivery End	Basis	\$ Price
+ Soybeans	Dec 2018	-87	\$7.8050

