

Quality The Life...



XHL-04 Computerized Universal Testing Machine



A Type



B Type

No.9 Jian Street , Jinan Shandong China

Phone : 86-531-67880131 Fax : 86-531-86906490

Website : <http://www.xhinstruments.com> Email: sales@xhinstruments.com

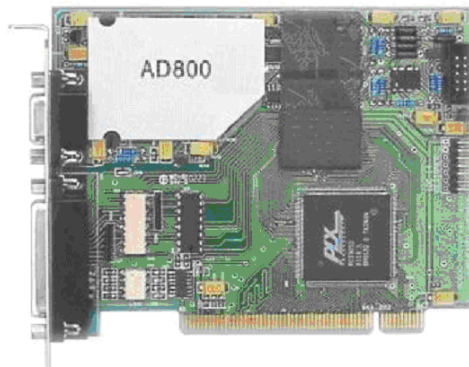
Test Instruments for Metal ,Plastic ,Textile ,Yarn ,Paint ,Paper ,Cardboard

Introduction :

The XHL-04 universal testing machine is applicable in testing the rubber ,plastic film ,cable , fabric , paper ,aluminum board and so on . It is ideal for high-capacity tension, compression, bend/flex, and shear testing, these machines are guaranteed to meet the relative requirements of ISO, ASTM, JIN, GB and many other testing .

Features of Control and Measurement System :

The AD800 full-digital closed-loop measure and control system is advance and creative, as followed:



- ◆ Foreign electronic components, digital design.
- ◆ Meeting to PCI2.1 standard; the computer identify and install automatically, “work if connect”.
- ◆ Integrated dual-channel precision amplifier, digital zero.
- ◆ The data acquisition contains 4 high-precision and 18 A / D converter. The Max. resolution is 1/300000. There is no subsection or 4 subsections according to the user’s needs.

No.9 Jian Street , Jinan Shandong China

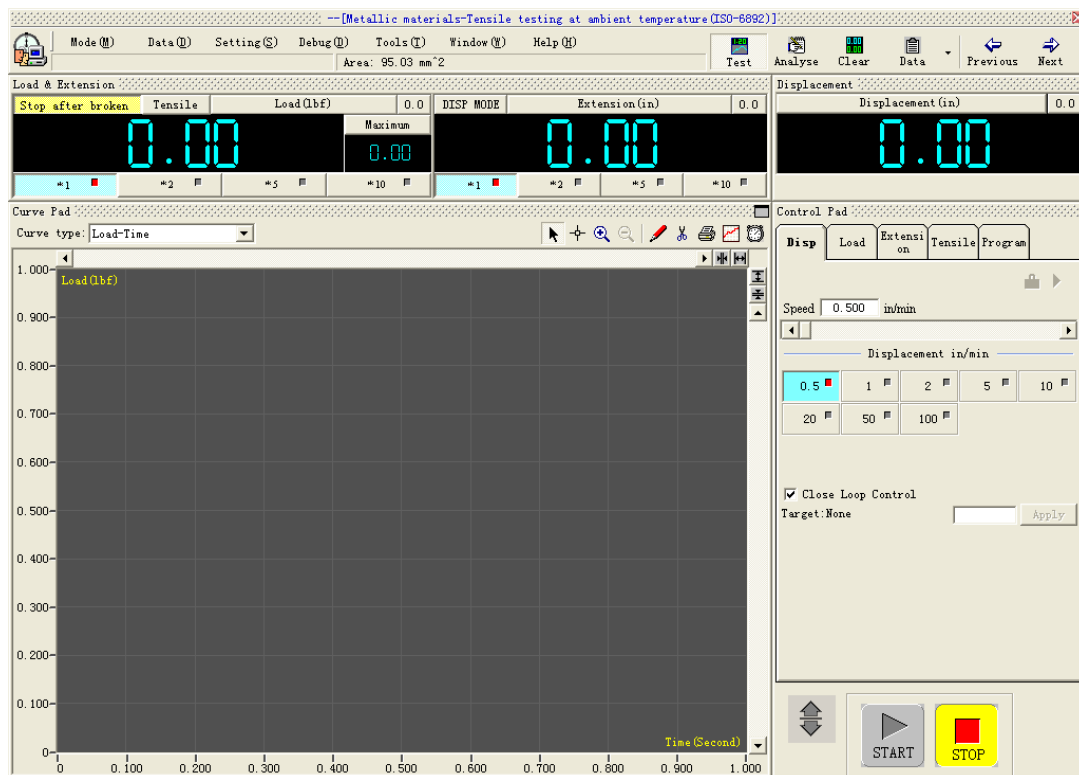
Phone : 86-531-67880131 Fax : 86-531-86906490

Website : <http://www.xhinstruments.com> Email: sales@xhinstruments.com

Test Instruments for Metal ,Plastic ,Textile ,Yarn ,Paint ,Paper ,Cardboard

- ◆ 3 photoelectric encoder inputs; the orthogonal codes pulse can be 5MHZ; it can find and correct mistakes, identify, count and so on.
- ◆ There is no manual components in electronic measurement and control system , it can ensure to change easily.
- ◆ Build-in CPLD, it can high-speed calculate and real-time process.

The control mode , test data and curves in real time displayed in main menu



No.9 Jian Street , Jinan Shandong China

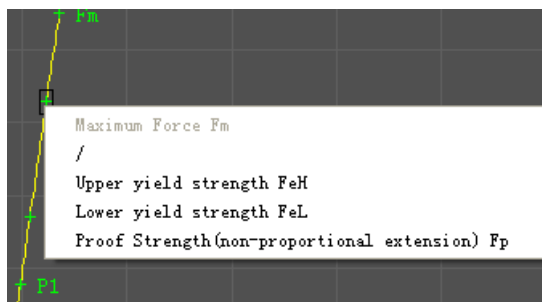
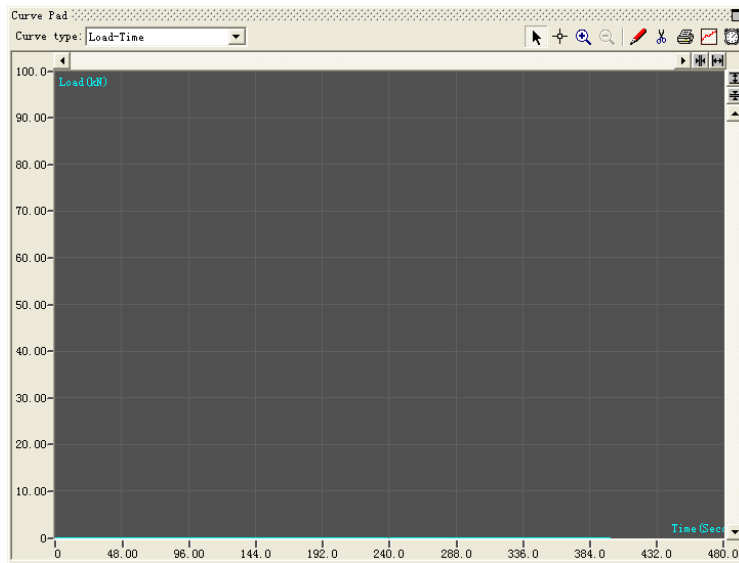
Phone : 86-531-67880131 Fax : 86-531-86906490

Website : <http://www.xhinstruments.com> Email: sales@xhinstruments.com

Test Instruments for Metal ,Plastic ,Textile ,Yarn ,Paint ,Paper ,Cardboard

Multiple curves function ,real time and dynamic view including :

The program would record four different type of curves: Load-Time, Displacement-Time, Load-Extension, Load-Displacement, these could be switched displaying here .



The software support all kinds of popular standards i.e. ISO , ASTM , BS EN, DIN , JIS ,etc

No.9 Jian Street , Jinan Shandong China

Phone : 86-531-67880131 Fax : 86-531-86906490

Website : <http://www.xhinstruments.com> Email: sales@xhinstruments.com

Test Instruments for Metal ,Plastic ,Textile ,Yarn ,Paint ,Paper ,Cardboard



Test Result automatically obtains ,it also manually gets it from the test curves

SampleID	124	
TestDate	2/11/2006	
Operator	lin	
Type	Circle	
Size (mm)	18	
So (mm ²)	201.1	
Lo (mm)	50	
Lu (mm)	A (%)	50.0
Su (mm ²)	Z (%)	40.5
Fm (kN)	Rn (MPa)	690
FeH (kN)	ReH (MPa)	410
FeL (kN)	ReL (MPa)	375
Fp (kN)	Rp (MPa)	395
Ft (kN)	Rt (MPa)	400
E (GPa)	211.56	

All the results can be easily obtained from test datas, for save,reanalyiss.any other requirments,tell us please.
They are the basic functions what you want

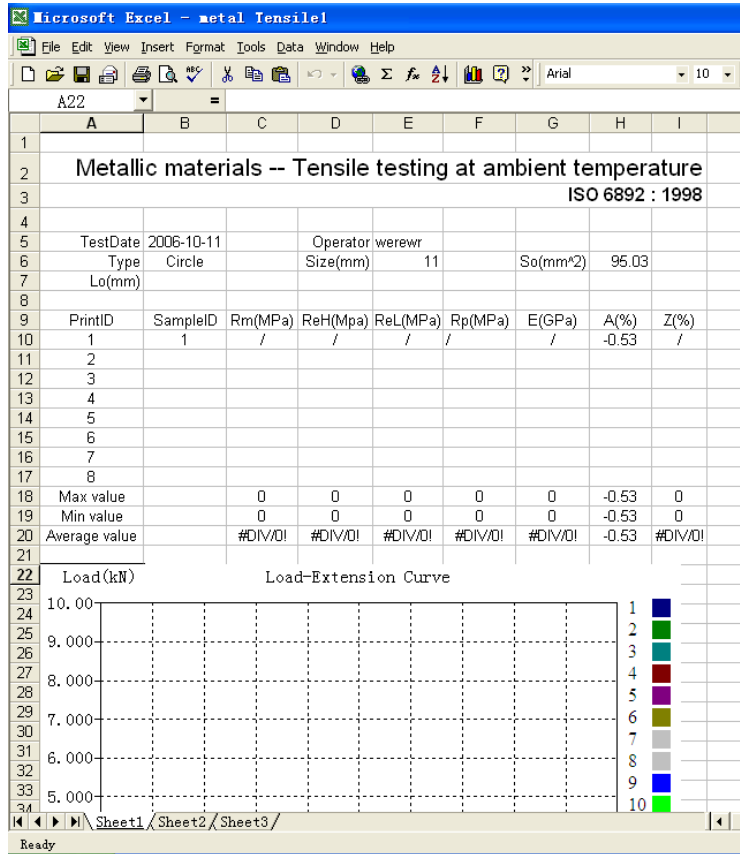
No.9 Jian Street , Jinan Shandong China

Phone : 86-531-67880131 Fax : 86-531-86906490

Website : <http://www.xhinstruments.com> Email: sales@xhinstruments.com

Test Instruments for Metal ,Plastic ,Textile ,Yarn ,Paint ,Paper ,Cardboard

Customer design testing reports .



Main Technical Parameter :

1. Max Force : 20KN
2. Strength Precision : $\pm 0.5\%$ of the applied load value, from 0.4% to 100% of the load cell capacity.
3. Strength Resolution : 1/300000
4. Precision of displacement : 0.0025mm

No.9 Jian Street , Jinan Shandong China

Phone : 86-531-67880131 Fax : 86-531-86906490

Website : <http://www.xhinstruments.com> Email: sales@xhinstruments.com

Test Instruments for Metal ,Plastic ,Textile ,Yarn ,Paint ,Paper ,Cardboard

5. Precision of deformation measurement: $\pm 0.5\%$
6. Cross head Speed : 0.01—500mm/min
7. Speed Accuracy : $\pm 1\%$ (0.001~10mm/min); $\pm 0.5\%$ (10~500mm/min)
8. Valid Tensile Distance: 600 mm
9. Compression Space : 600mm
10. The width between two columns : A type : 400mm B type : 450mm
11. Wedge grip clamping diameter of round specimen : $\Phi 4\text{-}\phi 9\text{mm}$
12. Wedge grip clamping of flat specimen (Thickness) : 0-7mm
13. Diameter of compression clamp : $\Phi 100\text{mm}$
14. Power : 220V ,50Hz ,2KW
15. Dimension : A : 760×500×1750mm B : 830×550×1900mm
16. Weight : A : 400kgs B: 550kgs

Configuration of host machine:

1. Main frame1 Pc
2. Taiwan TECO (Panasonic Optional) high performance servo motor1 Set
3. Reducer system1 Set
4. Load Cell (USA Celeron Brand Optional)1 Pc
5. Korea High Performance Ball Screw.....1 Set
6. Photoelectric Encoder1 Pc
7. Tools (For installing ,maintaining ,operation).....1 Set
8. Tensile Clamp.....1 Set
9. Compression Clamp1 Set
10. AD 800 Control Board1 Pc
11. Maxtest control software CD1 Set
12. Lenovo Computer (Optional).....1 Set
13. Hp Color Printer (Optional).....1 Set
14. Extensometer (Optional)1 Set