

## MIKRON HPM 1200 HD

# MIKRON HPM 1200 HD

## HD stands for High Dynamic

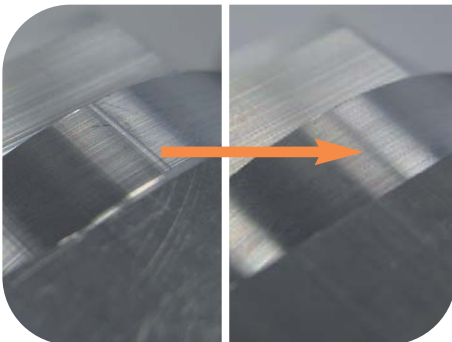
GF Agie Charmilles presents the reference in High Performance Machining



### Precision

... on the workpiece is no coincidence. It is the result of a perfectly matched machine tool and motion control. We placed great attention on the following:

- Our wide-ranging HSC experience
- Shortest possible processing time, also with MIKRON HPM 1200 HD
- Know-how in regulating circuit arrangement
- Well-balanced arrangement of masses from a dynamic point of view
- Inline composition of axis motor and ball screw on all axes (no gear steps)
- Optical measuring system and digital servo drives



### Ergonomy and accessibility

To set-up a machine is one of the most time-consuming activities. Each manipulation has to fit. Improved accessibility therefore provides at least three benefits: In the short-term, increased productivity. In the medium-term, increased capacity. And in the



competitiveness of your company in the long-term.

- Exceptional accessibility: close reach along the entire width of the work table
- Large components can be loaded easily by crane or fork-lift.
- Exceptional view of the work space. Doors over the corner.





### Technical data

### MIKRON HPM 1200 HD

Longitudinally X/Laterally Y/Vertically Z	mm	1200/600/500
15'000 min <sup>-1</sup> , ISO-SK40, BT40, CAT40	kW/Nm	39/84
20'000 min <sup>-1</sup> , HSK-A63	kW/Nm	39/84
Feed/fast rate X/Y/Z	m/min	40/30
Acceleration X/Y/Z	m/sec <sup>2</sup>	4/7/7
Clamping surface	mm	1400x600
Max. table loading, direct loading/pallet	kg	1200
Tool magazine	Piece	60
Machine weight	kg	14'000

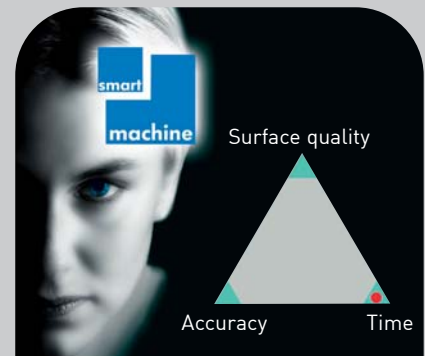
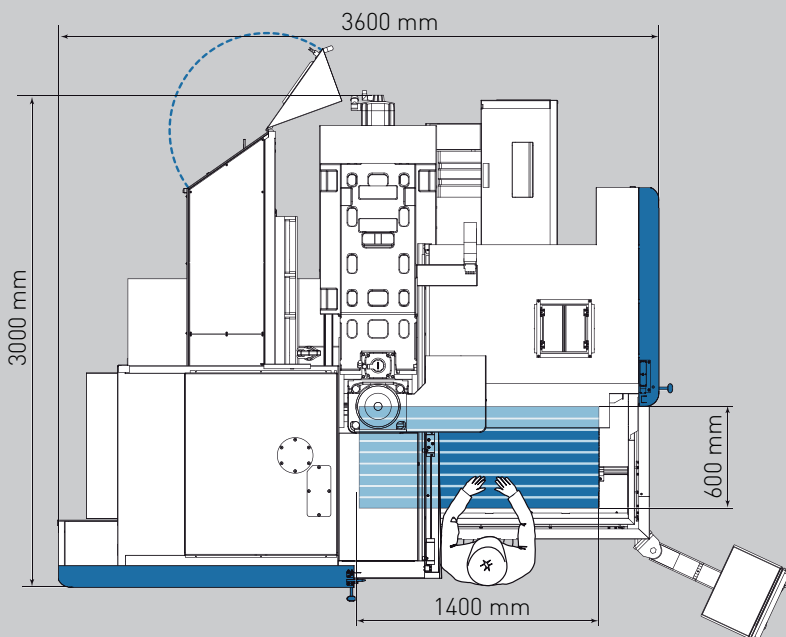
### Machining performance

A new development was actually required to meet the demands of modern high-efficiency machining. The new in-line motor spindles by Step-Tec offer, in addition to remarkable output, a wide speed band for fine machining of all types. The requests for an extended service life and cost-effective replacement in service procedures have been address-

sed with the oil/air lubricated ceramic hybrid bearings and the separation into a drive and a spindle module.

### Options

- Automation interface for automation by external partners
- Programmable coolant nozzle
- Cooling lubricant through the centre of the spindle
- A-axis and tailstock
- Wash-down system in the cabin



### OSS light\*

As the size of the workpiece grows it is not only the weight of the workpiece that increases, the machining time and the amount of post-production work increases as well.

The possibility to still influence the "time" factor, even after CAD/CAM programming, is therefore even more important. The software module OSS light allows to customise the tool path to the specific machining task.

- Accuracy: Most precise path tracking to target data.
- Speed: Reduces machining time during rough machining and pre-finishing
- Surface quality: Reduced manual labor after the finishing process

\* Delivery as of 4th quarter 2009

## MIKRON HPM 1200 HD

Sturdy machine structure, high machining output, precision motion control

## At a glance

### Achieve more

We commit ourselves to a promise.  
That promise is "Achieve more."  
It's a commitment to create the right  
conditions for our customers to obtain  
competitive results.  
When our customers win, we win.

### GF AgieCharmilles

We enable our customers to  
run their businesses efficiently  
and effectively by offering  
innovative Milling, EDM and  
Automation solutions.  
A comprehensive package of  
Customer Services completes  
our proposition.

[www.gfac.com](http://www.gfac.com)

**+GF+**

**AgieCharmilles**

**Achieve more...**