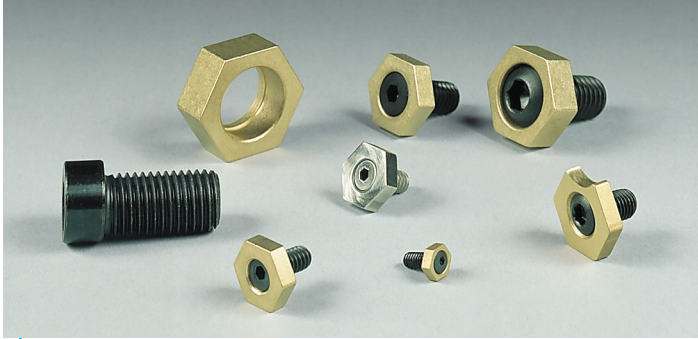


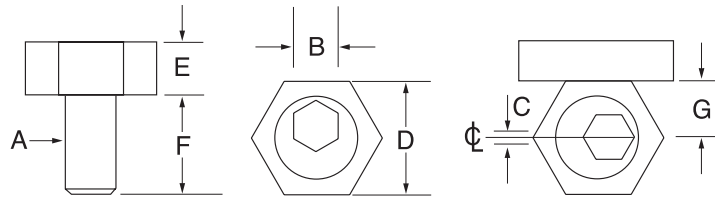
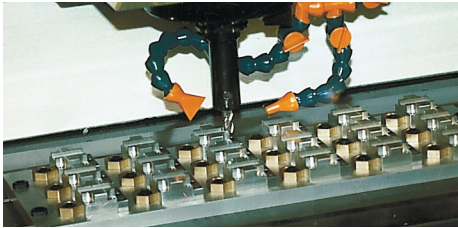
Original Fixture Clamps



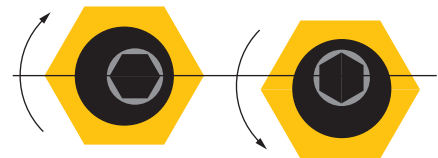
The cam action MITEE-BITE Fixture Clamp is made up of two simple components: a hardened steel socket cap screw with an offset head and a brass hexagonal washer.

- ▶ Low-profile makes computer programming easier
- ▶ Cam action provides fast, strong clamping
- ▶ Small size allows more parts per load
- ▶ Simple design keeps cost low

NOTE: Clockwise rotation is recommended.
Stop should be on the right of workpiece.



Part Number	A	B	C	D	E	F	G	Torque (Ft/Lbs)	Holding Force	No. of Clamps Per Pack
INCH										
10202	8 - 32	5/64	.030	.312	.110	.350	.150	1.5	205 lbs	10
10207	10 - 32	3/32	.040	.500	.160	.340	.250	2.5	350 lbs	10
10204	1/4 - 20	1/8	.040	.625	.190	.470	.308	6.2	800 lbs	10
10205	5/16 - 24	3/16	.040	.812	.190	.460	.400	8.3	800 lbs	12
10201	5/16 - 18	3/16	.040	.812	.190	.460	.400	8.3	800 lbs	12
10206	3/8 - 16	3/16	.050	.812	.250	.710	.400	20.8	2,000 lbs	10
10208	1/2 - 13	5/16	.100	1.000	.375	.900	.500	65.0	4,000 lbs	8
10210	5/8 - 11	3/8	.100	1.187	.500	1.125	.590	100.0	6,000 lbs	4



The following measurements are the correct locations to drill and tap holes for MITEE-BITE Fixture Clamps.

								Torque (N.m.)		
METRIC										
50204	M4	3	.76	7.93	2.80	9.6	3.80	2.0	910 N	10
50206	M6	4	1.01	15.86	4.75	11.2	7.80	8.5	3,558 N	10
50208	M8	5	1.01	20.61	4.75	15.0	10.15	11.3	3,558 N	12
50210	M10	7	1.27	20.61	6.35	19.0	10.15	28.0	8,895 N	10
50212	M12	8	2.03	25.38	9.52	22.8	12.70	88.0	17,790 N	8
50216	M16	12	2.54	30.13	12.70	28.5	15.00	125.0	26,680 N	4

DISTANCE FROM EDGE OF WORKPIECE

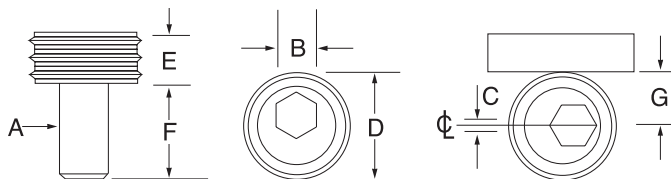
Part Number	Distance
10202	.150
10207	.250
10203	.308
10204	.308
10205	.400
10201	.400
10206	.400
10213	.400
10208	.500
10210	.590

STAINLESS STEEL WASHER AND SCREW										
10203	1/4 - 20	1/8	.040	.625	.190	.470	.308	6.2 Ft. Lbs	800 lbs	4
10213	5/16 - 18	3/16	.040	.812	.250	.460	.400	8.3 Ft. Lbs	800 lbs	4
50205	M6	4mm	1.01mm	15.86mm	4.75mm	11.2mm	7.80mm	8.50(N.m.)	3,558 N	4
50207	M8	5mm	1.01mm	20.60mm	6.35mm	15.0mm	10.15mm	11.30(N.m.)	3,558 N	4

Knife Edge Clamps



Knife Edge Clamps can be used instead of the original brass hex clamps for clamping rough cut stock, castings and any material that requires a hardened clamping element. Same "G" as Original Fixture Clamps.



Part Number	A	B	C	D	E	F	G	Torque (Ft/Lbs)	Holding Force (Lbs)	Number of Clamps Per Pack
22584	3/8 - 16	3/16	.050	.812	.250	.710	.400	16.6	2,000	8
22588B	1/2 - 13	5/16	.080	1.000	.375	.900	.500	52.0	4,000	8
22592	5/8 - 11	3/8	.100	1.187	.500	1.125	.590	80.0	6,000	4

Not designed for clamping hardened material at listed torque.