

# CAPITAL WELD CLEANERS

**Now Offering Rental Units**

**STAINLESS  
STEEL WELD  
CLEANING  
SYSTEM**

**With Purchase Option**

## **2X40 Model**

The 2X40 supports the use of (2) wands to double productivity.

Adjustable voltage to each wand allows flexibility and precision.

## **1X30 Model**

Single user design.  
New more economical solution.

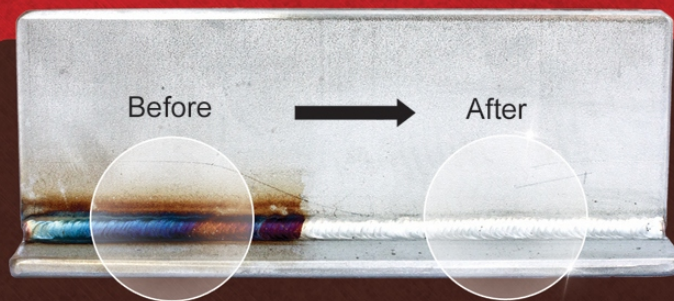
Same durability as the 2X40.



**THE BEST OPTION TO REMOVE WELD DISCOLORATION FROM STAINLESS STEEL**

### **FACTS AND BENEFITS**

- ✦ Does not alter the surface finish.
- ✦ Dramatically reduces finishing costs.
- ✦ Tried and tested as a workhorse in production and heavy fabrication environments.
- ✦ Removes discoloration from TIG, MIG, plasma cutting, heat treating, brazing and spot welds.
- ✦ 100% duty cycle allows for increased productivity and zero down time.
- ✦ Effortless work and a must have for hard to access welds where abrasives would be a challenge.
- ✦ Easy to use and easy to train others.
- ✦ Low operating costs.



Welding of stainless steel produces a discoloration on the surface that must be removed to improve its appearance and to restore the corrosion resistance of the stainless steel.

The Capital Weld Cleaner for stainless steel offers outstanding time savings in restoring a bright finish to welded stainless steel. Surface discoloration (bluing) from TIG welding and spot welds is removed instantly and the original mill finish is restored, requiring no further treatment.

**CONTACT:** 720 N. Golden Key Street Suite B6, Gilbert, AZ 85233  
**PHONE:** 480-967-0016 **FAX:** 480-907-2078 | **EMAIL:** [info@capitalweldcleaners.com](mailto:info@capitalweldcleaners.com)





THE BEST OPTION TO REMOVE WELD DISCOLORATION FROM STAINLESS STEEL

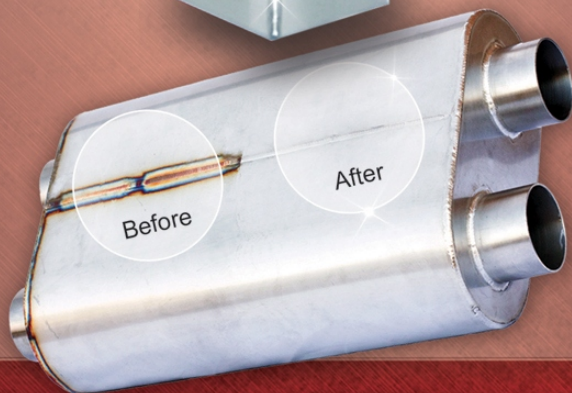
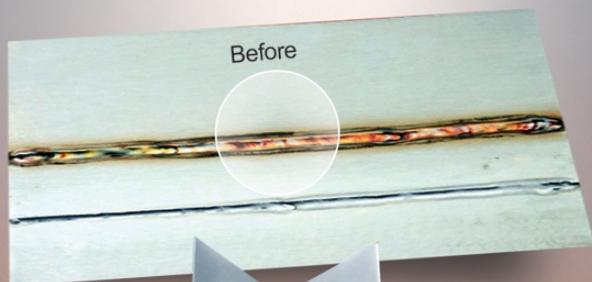


## Stainless Steel Weld Cleaning System

Tired of paying employees to spend hours removing the discoloration from stainless steel welds? The Capital Weld Cleaner provides shop professionals with the **most dependable** and **efficient electro-chemical cleaner** on the market. The cleaner uses precision technology to instantly clean discoloration from welded materials.

Within minutes, your technicians will have a picture-perfect finished product and be ready to move to the next task. **No more abrasives, no more excessive labor, no more headaches.**

Capital Weld Cleaners will put you back in control of your shop... and your bottom line.



### KEY FEATURE COMPARISON:

2X40

1X30

Efficient process dramatically reduces finishing time and labor costs.



Electro-Chemical reaction does not alter the surface finish.



New ergonomic and insulated wand design prevents user fatigue.



Each unit supports the use of (2) wands to double productivity.



Adjustable voltage to each wand allows flexibility and precision.



Various electrode designs easily match your specific application.



12' heavy duty work cables improve durability and efficiency.



Unit employs circuit and thermal protection for safety and durability.



Includes 110v power for portability to any jobsite.



Can be wired for 220v for international locations.



Uses stainless electrodes not copper, to prevent cross-contamination.



CONTACT: 720 N. Golden Key Street Suite B6, Gilbert, AZ 85233  
PHONE: 480-967-0016 FAX: 480-907-2078 | EMAIL: [info@capitalweldcleaners.com](mailto:info@capitalweldcleaners.com)



Made in  
USA



## *Other Weld Cleaner Products*

### ► CB-5 Insulator Sleeves

This new sleeve will replace the need to wrap the wand electrode with fiberglass cloth. The sleeve slips easily onto the electrode, but is snug enough to remain in place during cleaning. Made from a durable material, the boot will last significantly longer than the fiberglass cloth.



### ► CB-50 Insulator Sleeves

Bulk package of 50 of the CWC Insulator Sleeves

### ► CB-100 Insulator Sleeves

Bulk package of 100 of the CWC Insulator Sleeves

### ► Additional Wand Assembly

Increase efficiency by adding another wand and cord to your arsenal. The 2X40 allows for simultaneous use of 2 separate wands.



### ► Additional Standard Tip

Use this standard electrode for numerous applications including flat, curved, or corner surfaces.



### ► Additional Radius Tip

Use this rounded electrode for easy cleaning of tubing and pipes. Each electrode works interchangeably with the standard wand unit.



### ► Weld Cleaning Solution

Weld cleaning solution is available in 1 gallon and 2.5 gallon sizes.



### ► Fiberglass Cloth

2" x 50 yard roll of fiberglass cloth. To be used as an alternative to the CB-5 insulator sleeves.



### ► Ground cable extension

12GCE - 12' Cable extensions to increase your work area.



### ► Wand cable extension

12WCE - 12' Cable extensions to increase your work area.

