



Planned Retail/Office Center

## RETAIL/OFFICE/PAD SITES

PPCIE 1406314



Neighborhood center located on the northwest corner of Barnes Road and Marksheffel Road services the eastern expansion of Colorado Springs and the Banning Lewis Ranch. The combination of retail, office and pad sites will enhance this location's value to the surrounding neighborhood area provides an excellent opportunity for a site for local and national retail and office users.

- Now Pre-Leasing **Retail 50% Pre-Leased**
- 19,200 SF of Retail
- 26,000 SF of Proposed Office
- Flexible Pad Site Configuration
- Joint Venture Opportunities
- Expanding Neighborhood
- Great Visibility
- Easy Access

For further information, please contact:

**Craig Yatsu**  
719.574.2993

[craigyatsu@craigcommercial.com](mailto:craigyatsu@craigcommercial.com)

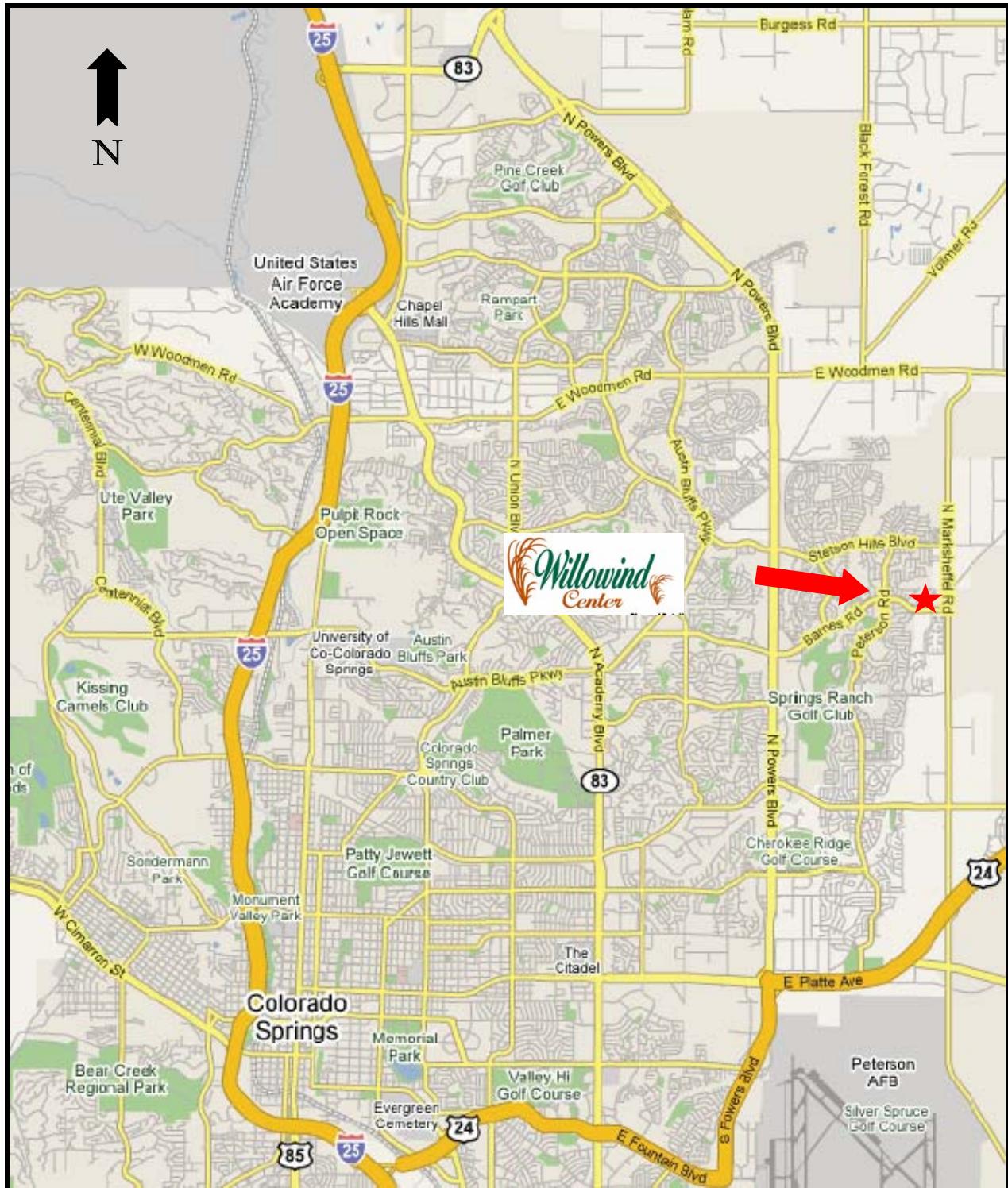
422 E. Vermijo Ave., Suite 313 Colorado Springs, CO 80903

*Information contained herein while not guaranteed, is from sources believed to be reliable. Price, terms and information are subject to change without notice. Craig Commercial Real Estate, Inc.*



**CRAIG**  
COMMERCIAL  
REAL ESTATE, INC.

# Location



For further information, please contact:

**Craig Yatsu**  
719.574.2993

[craigyatsu@craigcommercial.com](mailto:craigyatsu@craigcommercial.com)

422 E. Vermijo Ave., Suite 313 Colorado Springs, CO 80903

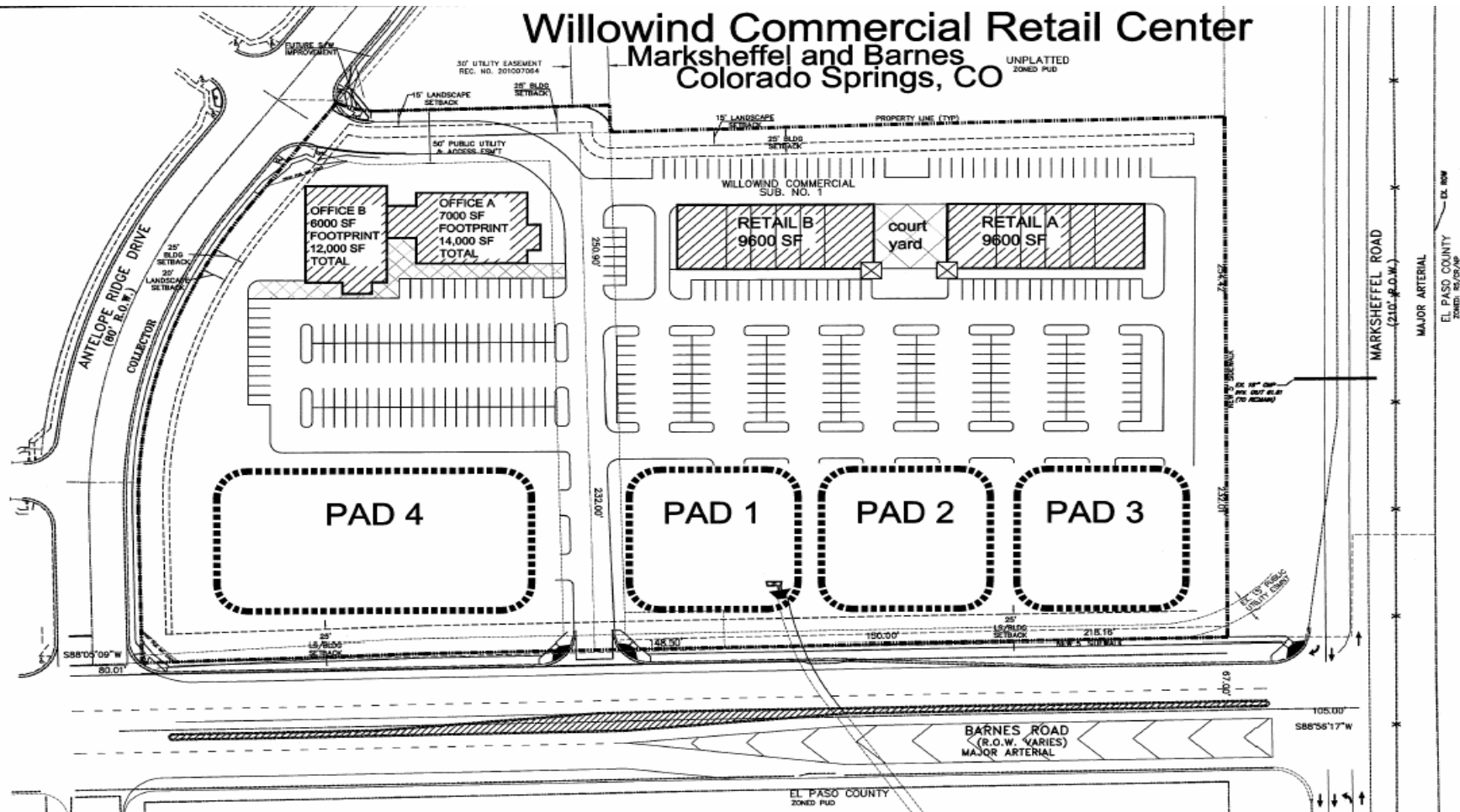
*Information contained herein while not guaranteed, is from sources believed to be reliable. Price, terms and information are subject to change without notice. Craig Commercial Real Estate, Inc.*



**CRAIG**  
COMMERCIAL  
REAL ESTATE, INC.

# Willowind Commercial Retail Center

## Marksheffel and Barnes Colorado Springs, CO



### SKETCH SITE PLAN - F

SCALE: 1"=40'-0"



For further information, please contact:

**Craig Yatsu**  
**719.574.2993**

[craigyatsu@craigcommercial.com](mailto:craigyatsu@craigcommercial.com)

422 E. Vermijo Ave., Suite 313 Colorado Springs, CO 80903



*Information contained herein while not guaranteed, is from sources believed to be reliable. Price, terms and information are subject to change without notice. Craig Commercial Real Estate, Inc.*