

670 Cedarview Road, Nepean, ON



This NCC Historical Log Farm Site is located off Cedarview Road in the Greenbelt just north of Barrhaven in Nepean. This treasure has been restored to depict the Bradley family homestead and life as it was on an Ottawa Valley Farm during the 1870's. It's also an annual Sugar Bush venue where you can snowshoe or cross country ski on the walking trails to the sugar bush and sample taffy on snow. Additionally, the property includes an opportunity for tenant's to host popular favorites such as the annual pancake breakfast, providing a supplemental revenue stream.



Total area: 44.96 hectares (111.1 acres), 15.05 hectares (37.2 acres) cultivable.

Soil Type: Class Two, Four, Five, Seven.

Tile Drainage: 6.67 hectares (16.5 acres) of tile drainage on cultivable land

Residence: The residence is a large four bedroom bungalow.

Outbuildings: Main Residence Area: a large storage building converted into a dining area and a log house previously used as a visitor centre/lodge.

Historical Log Farm Area: a log farmhouse, summer kitchen, blacksmith's shed and carpentry shop, all furnished as per the late 1800's. Three barns previously used for the farm's petting zoo, and equipment shed and an outhouse.

Rental Rate: \$2,690 per month (includes the farm house) and taxes. Price is reflective of a maintenance plan implemented by the NCC to be followed by the Tenant for the upkeep of the historical log farm site (8 buildings) in lieu of reduced rent. Rental rate is

conditional upon eligibility to OMAFRA's requirements for the Farm Property Class Tax Rate Program (Ontario Ministry of Agriculture, Food and Rural Affairs). There is a possibility for rental rate adjustment depending on the infrastructure investment from the lessee and/or the landlord for the long-term and universal functionality of the farm.

Expectation: The Commission is looking to enter into a long term development and operations agreement with a suitable partner which would:

- Maintain an economically viable and self-supporting facility;
- Ensure the preservation of the recognized heritage values of the buildings and site, including restoration and maintenance of buildings and farm equipment, grounds and farm fields, farm animals, and period household effects authentic to the 1870's period;
- Interpret and encourage visitors to understand the story of the settlement of the Ottawa Valley, rural life in the 1870's;
- Conduct heritage and environmentally acceptable program of capital improvements to the existing facilities and possible development of new complimentary facilities, appropriate to Greenbelt context;
- Help the NCC to realise those recommendations of the Greenbelt Master Plan, such as:
 - Optimize recreation and education role of the log farm;
 - Seek partners to establish possible interpretative centre;
 - Conserve cultural heritage of log farm buildings.



Disclaimer: DEL Management and the NCC do not guarantee this information to be correct, current, or complete. The maps are intended only as a general reference, and are neither intended nor suitable for site-specific, financial, or legal decisions. Any use to the contrary of the above uses is the responsibility of the user, and such use is at the user's own risk

670 Cedarview Road / 670 chemin Cedarview

Farmland Area by Soil Class /

Superficie agricole par class de sol

Based on the National Soil Database layer: Agriculture and Agri-Food Canada /
Selon la Base nationale de données sur les sols, Agriculture et Agroalimentaire Canada

Soil Class / Classe de sol: TWO / DEUX

- ± 1.1 acres (Non-tilled / Non drainé)
- ± 14.6 acres (Tilled / Drainé)
- ± 4.6 acres (Non-cultivable / Non cultivable)

Soil Class / Classe de sol: FOUR / QUATRE

- ± 18.2 acres (Non-tilled / Non drainé)
- ± 0.5 acres (Tilled / Drainé)
- ± 22.5 acres (Non-cultivable / Non cultivable)

Soil Class / Classe de sol: FIVE & SEVEN / CINQ & SEPT

- ± 1.4 acres (Non-tilled / Non drainé)
- ± 1.4 acres (Tilled / Drainé)
- ± 45.8 acres (Non-cultivable / Non cultivable)

Total Farmland Area / Superficie agricole totale

- ± 37.2 acres (Cultivable / Cultivable)
- ± 72.9 acres (Non-cultivable / Non cultivable)
- ± 110.1 acres Total Land Area / Superficie des terres

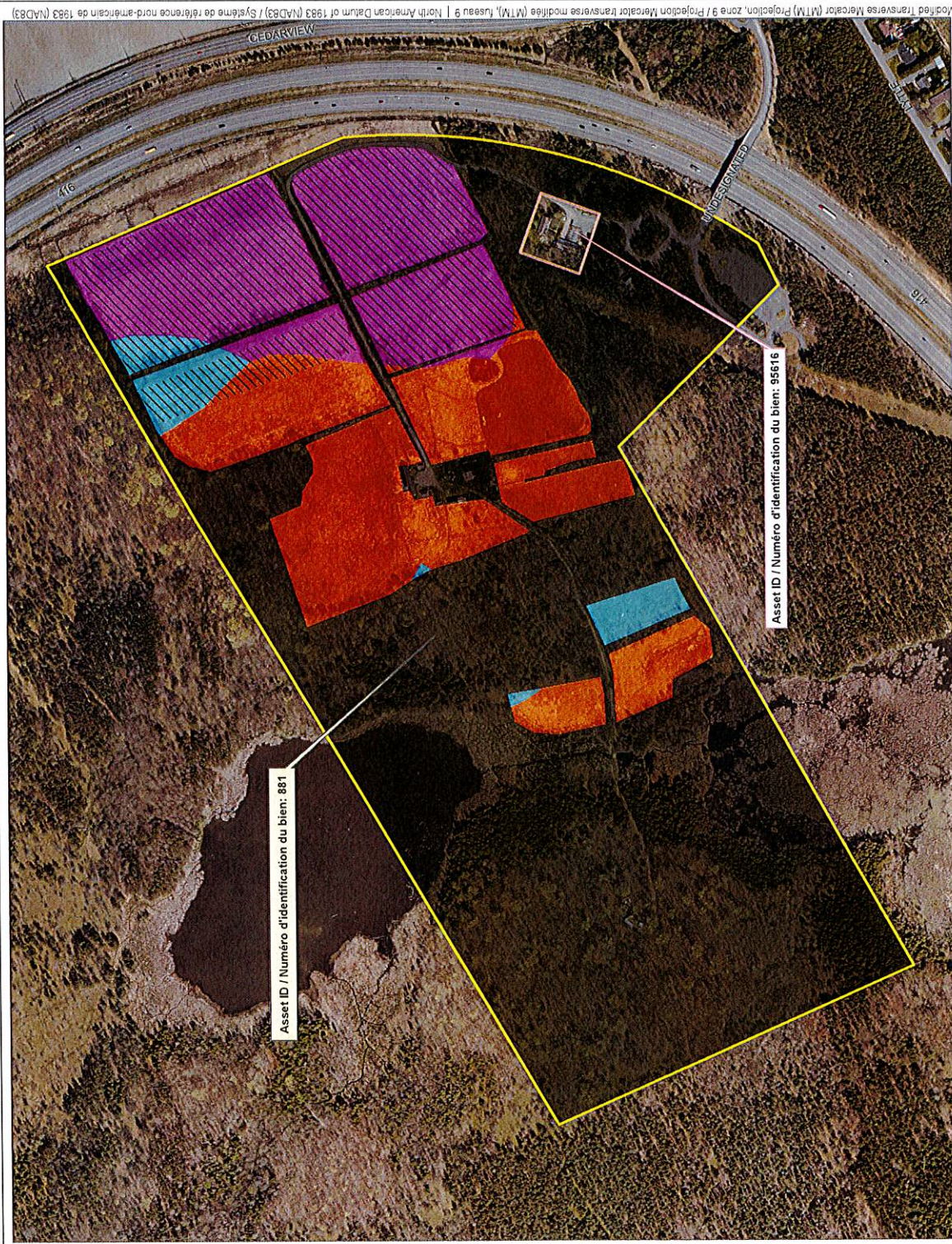
Residential Area / Superficie résidentielle

- ± 1.0 acres (Non-cultivable / Non cultivable)



Property and Orthophoto (2011) layers, NCC /
Les couches de Propriétés et de l'orthophotographie (2011), CCN

2015-03-20



Modified Transverse Mercator (MTM) Projection, zone 9 / Projection Transverse modifiée (MTM), fuseau 9 | North American Datum of 1983 (NAD83) / Système de référence nord-américain de 1983 (NAD83)