



2018

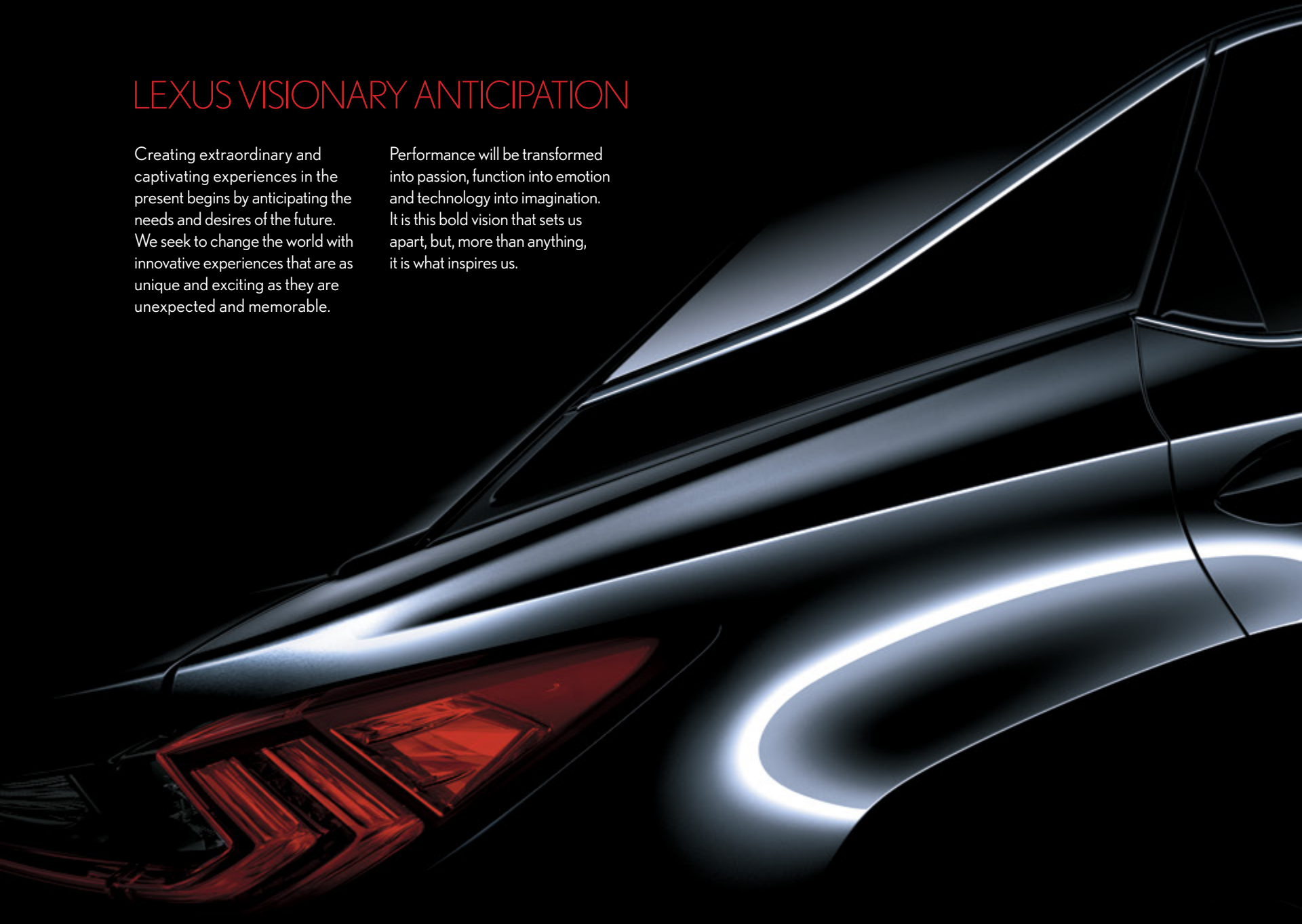
GX|LX



LEXUS VISIONARY ANTICIPATION

Creating extraordinary and captivating experiences in the present begins by anticipating the needs and desires of the future. We seek to change the world with innovative experiences that are as unique and exciting as they are unexpected and memorable.

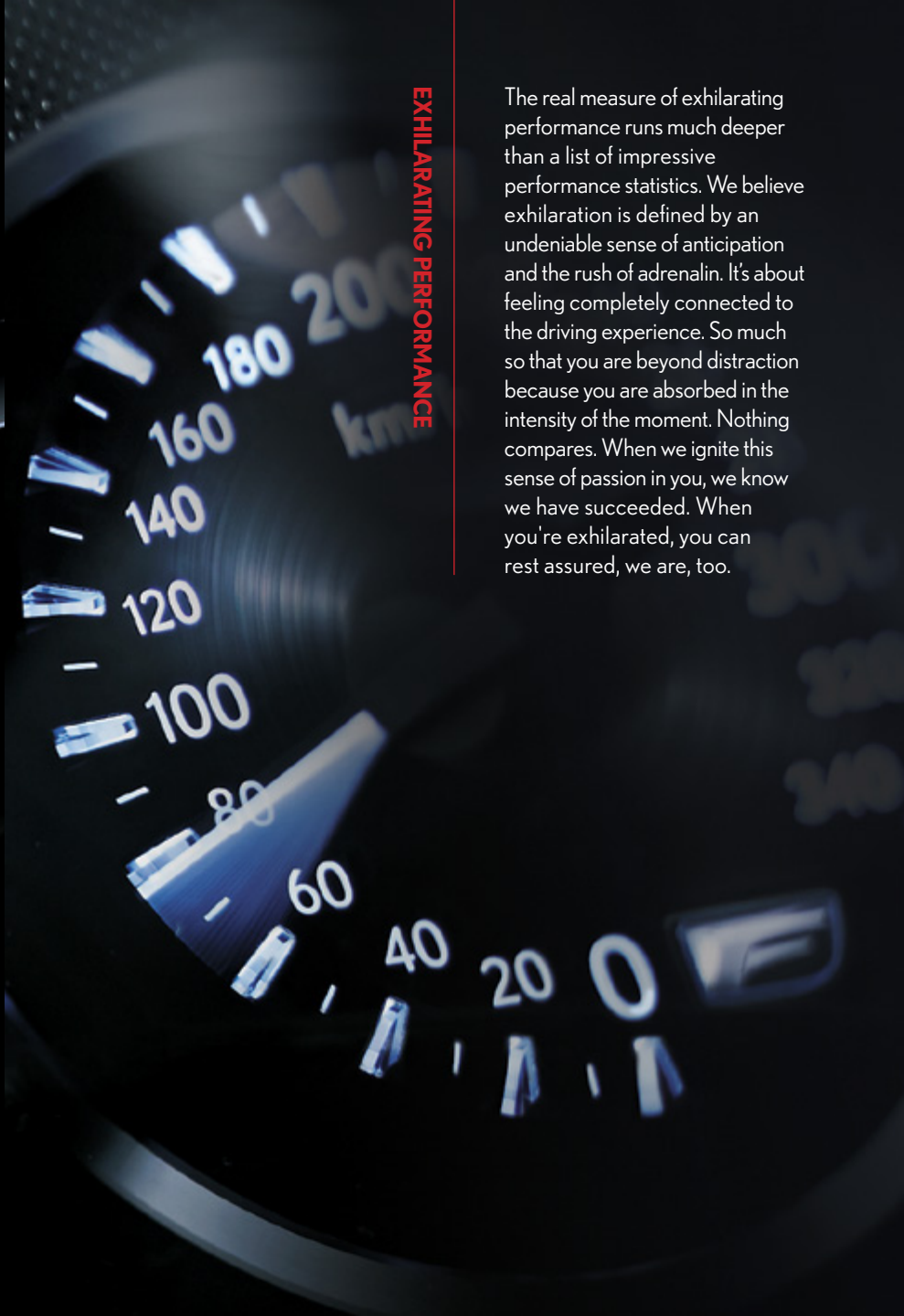
Performance will be transformed into passion, function into emotion and technology into imagination. It is this bold vision that sets us apart, but, more than anything, it is what inspires us.





BRAVE DESIGN

Above all else, brave design is about the courage to stand out. That has always meant doing things differently. Conformity isn't an option. Brave design is what elevates the simple and purposeful to something extraordinary. We see every design as a fresh opportunity to stir a visceral feeling in you. That's why we seek the provocative and welcome the original. It's what drives us to be first. Leading-edge design that inspires more deeply demands nothing less.



EXHILARATING PERFORMANCE

The real measure of exhilarating performance runs much deeper than a list of impressive performance statistics. We believe exhilaration is defined by an undeniable sense of anticipation and the rush of adrenaline. It's about feeling completely connected to the driving experience. So much so that you are beyond distraction because you are absorbed in the intensity of the moment. Nothing compares. When we ignite this sense of passion in you, we know we have succeeded. When you're exhilarated, you can rest assured, we are, too.

IMAGINATIVE TECHNOLOGY

We seek technology that reaches beyond the comfort of the conventional and the safety of the familiar. Intuitive and purposeful are merely starting points. Truly imaginative technology solves problems no one has yet identified. This passion is what propels us to ask, 'What if?' and, 'Why not?' Sometimes the technological breakthrough is revolutionary. Other times it is an unexpected application of an existing one. Either way, the result is an immersive experiences no one imagined possible before.



TAKUMI CRAFTSMANSHIP

At Lexus, the Takumi are the rarified group of master craftsmen who bring a refined human touch to every aspect of our design and development. From the finish of the paint, to the resonance of the engine, their highly-tuned senses of sight, hearing and touch are crucial to perfecting the fit, finish and feel of every Lexus. The Takumi's influence reaches far beyond our enviable quality standards. Their dedication to excellence and passion for constant improvement inspire how we approach everything we do.





OMOTENASHI

The Japanese tradition of Omotenashi is an essential part of Lexus culture. By actively seeking a deeper, more profound understanding of your personal needs and desires, we are able to not only anticipate your expectations but also to exceed them. Often before you realize you even have them. We are dedicated to treating you like a Guest in our home with warmth, care and, above all, respect. This same philosophy is also at the heart of our approach to engineering and design. By anticipating your needs, we can forge a stronger, more meaningful connection between you and your vehicle.



GX

TO THE
POWERFUL
GO THE
SPOILS.

Step into the GX 460 and experience how Lexus has fused luxury and function like never before. And with exquisite comforts and styling, every kilometre becomes a luxurious one, inspiring you to explore the world over with confidence and composure.





COMMANDS RESPECT AND ANY SITUATION.

GX Sport Design Edition is a force to be reckoned with. Its 4.6 litre 301 horsepower¹² 32-valve Dual VVT-i V8 eagerly awaits the coaxing of your right foot. And when the GX wants to put its muscle on display, a trailer-grabbing 329 lb-ft¹² of torque and A-Trac 4-wheel traction control that monitors relative traction and then transfers torque to the wheel with the most grip by using brake and throttle control make light work or heavy jobs.





X9

EXTERIOR DESIGN

LOOKS AS GOOD AS IT FEELS.

Blessed with both good looks and athleticism? It almost feels unfair. But with attention-grabbing high gloss front and rear spoilers that are perfectly complemented by a dynamic rear combination lamp design, the GX achieves both flawlessly. The sleek stainless-steel exhaust tip and aggressive 18-inch gun metal tone alloy wheels work together to round out this powerful piece of performance art. And with anti-corrosion sheet steel and special coatings the GX will sure remain a stunner for years to come.





CREATURE COMFORTS WITH FINE TASTE.

From inside the beautifully appointed GX long drives are something to look forward to. The sumptuous comfort and thoughtful convenience of the interior peaks in the driver's cockpit, where advanced ergonomics deliver excellent driver control. From this enviable position, you can immerse yourself in the sonic experience of the 17-speaker Mark Levinson® Premium Audio System,³ with 330-watt 7.1 channel surround sound, integrated XM® Satellite Radio, and Bluetooth® capability. Once driving the GX you might suddenly find yourself wanting to take the scenic route. For this reason, the GX will get you there in technological style with its voice-activated HDD Navigation system.¹ Finally, once you arrive its rear camera gives you the big picture when reversing and parking.²







XG

SAFETY

A MOTORCADE WORTHY SENSE OF SAFETY

With all the luxury surrounding you in the GX you may soon forget that it has been engineered to be one truly vault like driving experience. From its class-leading 10 airbags to Vehicle Stability Control (VSC)¹⁴ that senses, evaluates, and corrects oversteering and understeering, the GX takes safety to the next level. And when the performance must regrettably come to an end, Electronic Brake-force Distribution (EBD) provides optimal brake pressure at each wheel, providing better braking – especially through corners – as well as reduced braking distance. Because the only thing that isn't dramatic about the GX is bringing it to a halt.

Standard Luxury

LUXURY AND CONVENIENCE

- ▶ SmartAccess with Push-Button Start/Stop²⁰
- ▶ Power-Adjustable Tilt-and-Telescopic Heated Steering Wheel
- ▶ Voice-Activated Navigation System¹
- ▶ Three-Zone Automatic Climate Control
- ▶ Power Moonroof
- ▶ Multi-Function, In-Key Remote Entry System with Rolling-Code Technology
- ▶ Homelink® Universal Transceiver²⁶
- ▶ Intuitive Parking Assist
- ▶ Retractable Tonneau Cover
- ▶ Rear Privacy Glass
- ▶ Flip-Open Rear Hatch Glass
- ▶ Roof Rails²⁴
- ▶ Rear Spoiler with Integrated Wiper
- ▶ Running Boards with Built-in Courtesy Lights
- ▶ High Gloss Silver Front & Rear Spoilers
- ▶ Radiator Grille Lower Garnish
- ▶ Outer Mirror Housing with Plating
- ▶ Stainless Steel Exhaust Tip

SEATING AND TRIM

- ▶ Perforated Premium Leather Seat Surfaces
- ▶ Mahogany Wood Interior Trim
- ▶ Wood and Leather-Wrapped Heated Steering Wheel and Shift Knob
- ▶ 10-Way Driver and Front Passenger (Including Lumbar) Power-Adjustable Seats
- ▶ Heated and Ventilated Front Seats
- ▶ 60/40 Split Middle-Row Seat with 40/20/40 Split Seatback
- ▶ Heated Outboard Middle-Row Seats
- ▶ Power Folding (Flat) 3rd Row Seats

AUDIO, COMMUNICATIONS AND INSTRUMENTATION

- ▶ Electroluminescent Instrumentation
- ▶ 17-Speaker Mark Levinson® Surround Sound Audio System³
- ▶ Integrated XM® Satellite Radio⁵
- ▶ USB Audio Input for iPhone®/iPod®/Compatible Music Player Integration with Audio System⁶
- ▶ Bluetooth® Audio Profile for Wireless Integration of Compatible Music Players with In-Vehicle Audio System⁷
- ▶ Backup Camera²

Standard Safety and Security

ACTIVE SAFETY

- ▶ Vehicle Stability Control (VSC)¹⁴
- ▶ Electronic Brake-Force Distribution (EBD)
- ▶ Smart Stop Technology²¹
- ▶ Direct Tire Pressure Monitor System¹⁸
- ▶ Full-time 4WD with TORSEN® Limited-Slip Centre Differential¹³
- ▶ Hill-Start Assist Control (HAC)¹⁷
- ▶ Downhill Assist Control (DAC)¹⁷
- ▶ Variable Gear-Ratio Steering (VGRS)
- ▶ Manual-Locking Centre Differential
- ▶ Multi-Terrain Traction Control
- ▶ Offroad Turn Assist
- ▶ Trailer Sway Control
- ▶ LED Daytime Running Lamps
- ▶ LED Low-Beam Headlamps
- ▶ Rain-Sensing Wipers with De-Icer
- ▶ LED Brake Lamps
- ▶ LED Fog Lamps
- ▶ Heated Outside Mirrors with Integrated Turn Indicators
- ▶ Power Folding Auto-Dimming Side View Mirrors
- ▶ Automatic High-Beam Feature²⁷
- ▶ Headlamp Washers

PASSIVE SAFETY

- ▶ Driver and Front-Passenger Airbag System (SRS)¹⁹
- ▶ Front Seat-Mounted Side Airbags¹⁹
- ▶ Front and Rear Side Curtain Airbags¹⁹
- ▶ Driver and Front-Passenger Knee Airbags¹⁹
- ▶ Middle-Row Outboard Seat-Mounted Side Airbags¹⁹
- ▶ Child Restraint System (CRS) Tether Anchor Brackets for Middle-Row Outboard Seats¹⁹
- ▶ Active Front Headrests¹¹

SECURITY

- ▶ Vehicle Theft-Deterrent System
- ▶ Engine Immobilizer System
- ▶ First Aid Kit
- ▶ Tool Kit

Standard Specifications

BODY & DIMENSIONS

- ▶ **Overall Length** 4,805 mm/189.2"
- ▶ **Wheelbase** 2,790 mm/109.8"
- ▶ **Ground Clearance** 205 mm/8.1"
- ▶ **Width** 1,885 mm/74.2"
- ▶ **Height (w/Roof Rails)** 1,875 mm/73.8"
- ▶ **Headroom (Front)** 965 mm/38"
- ▶ **Headroom (Middle)** 1,025 mm/40.4"
- ▶ **Headroom (Rear)** 895 mm/35.2"
- ▶ **Legroom (Front)** 1,058 mm/41.7"
- ▶ **Legroom (Middle)** 868 mm/34.1"
- ▶ **Legroom (Rear)** 743 mm/29.3"
- ▶ **Shoulder Room (Front)** 1,408 mm/55.4"
- ▶ **Shoulder Room (Middle)** 1,455 mm/57.3"
- ▶ **Shoulder Room (Rear)** 1,384 mm/54.5"
- ▶ **Fuel Tank Capacity** 87 litres/19 gallons
- ▶ **Cargo Capacity (Max, Behind Front Seats)** 1,833 litres/64.7 cubic feet
- ▶ **Approach Angle** 28 degrees
- ▶ **Departure Angle** 25 degrees
- ▶ **Max Passenger Seating** 7

ENGINE

- ▶ **Type** ▶ V8, 4.6 litres
 - ▶ Dual Variable Valve Timing with intelligence (VVT-i)
- ▶ **Horsepower** 301 hp @ 5,500 rpm¹²
- ▶ **Torque** 329 lb-ft @ 3,400 rpm¹²
- ▶ **Curb Weight** 2,349 kg/5,178 lb
- ▶ **Towing Capacity (Max)** 2,948 kg/6,500 lb²⁵

Wheels



18" Split 6-Spoke
Graphite Finish Alloy Wheels

GX ACCESSORIES, COLOURS & TRIM

Accessories



Block Heater



Cargo Net



Roof Rack Crossbars²⁴



Paint Protection Film



Towing Hitch Platform²⁵



Towing Hitch Receiver²⁵

Exterior



Starfire Pearl0077



Silver Lining Metallic01J4



Nebula Grey Pearl01H9



Nightfall Mica08X5

Interior



Premium Leather - Perforated

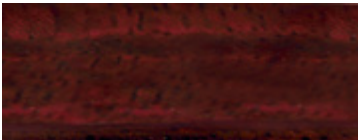
Sepia



Premium Leather - Perforated

Black

Interior Trim



Mahogany





LX

LUXURY
IN ITS MOST
AMPLE FORM

Simply put, the Lexus LX 570 over-delivers. Every detail embodies the very best, melding boundless performance with uncompromising refinement, ensuring you always have the peak of luxury and power at your beck and call.





LX

PERFORMANCE

383 HORSES. ALL OF THEM CHOMPING AT THE BIT.

The LX is all about making your presence felt. And there's nowhere that's more apparent than by looking under the hood. Because here lies a 5.7 litre, 383 horsepower¹² 32 dual VVT-I V8 with a titanic 403 lb-ft of torque. But how do you rein in all that raw power? With a superb eight-speed sequential-shift transmission and an adaptive Variable Suspension System that makes instantaneous adjustments as you drive so your command of any country road, trailer or onramp is absolute.





LX

EXTERIOR DESIGN

THERE'S A LOT TO TAKE IN.

To say the LX commands attention would be an understatement. But the understatements stop there. That's because the LX is able to be bold and striking while at the same time remaining elegant and sophisticated. Its spindle grille mated to a remarkable set of 21-inch aluminum alloy wheels, roof rails and roof mounted rear spoiler add mettle to the LX's metal. And with LED daytime running lights and fog lamps, auto levelling low and high beam LED headlamps and Automatic High Beam the LX is a vehicle that shines like no other.





THE ESCAPE FOUND WITHIN EVERY ESCAPE.

The LX has an interior so elegant it takes you to a different world even at a standstill. Here passengers are amply accommodated and entertained with generous seating for 8, sliding 2nd row, power folding 3rd row and dual screen rear seat DVD Entertainment system and a four-zone independent climate control system. The driver experience is, of course, equally exceptional. A voice-activated navigation system with head-up display is standard, along with a 19-speaker Mark Levinson® Reference Surround Sound Audio System with 7.1-channel architecture and integrated XM® Satellite Radio. And for an encore? You can charge your devices wirelessly.







EYES AND EARS FOR YOUR EYES AND EARS.

The LX is enveloped with 360 degrees of safety. Ten standard air bags, direct tire pressure monitoring, Hill Start Assist Control (HAC),¹⁷ Downhill Assist Control (DAC),¹⁷ Trailer Sway Control, and Lane Departure Alert (LDA)³⁰ are just the start. From the tires up, the LX is stacked with innovative features to help keep you safe. But the LX's focus on safety extends beyond its frame. Blind Spot Monitor,²⁸ which is rear-mounted radar that detects vehicles you can't see and lights an alert icon in your side mirror. Plus, Rear Cross-Traffic Alert²⁹ uses quasi-millimetre wave radar to help detect approaching vehicles and warns the driver via audio alert and side-mirror indicators.

Standard Luxury

LUXURY AND CONVENIENCE

- ▶ Head-Up Display
- ▶ SmartAccess with Push-Button Start/Stop²⁰
- ▶ Four-Zone Automatic Climate Control
- ▶ Power-Adjustable Tilt-and-Telescopic Steering Wheel
- ▶ Multi-Function, In-key Remote Entry System with Rolling-Code Technology
- ▶ HomeLink® Universal Transceiver²⁶
- ▶ Roof-Mounted Rear Spoiler
- ▶ Rear Privacy Glass
- ▶ Second-Row Manual Sunshades
- ▶ Integrated Backup Camera²
- ▶ Power Moonroof
- ▶ Driver Seat Memory System
- ▶ Roof Rails²⁴
- ▶ Adaptive Variable Suspension (AVS)
- ▶ Active Height Control (X-AHC)
- ▶ Power Rear Door
- ▶ Running Boards with Built-In Courtesy Lights
- ▶ Integrated Tow-Hitch Receiver²⁵
- ▶ Intuitive Parking Assist
- ▶ Wide-View Front and Side Monitor¹⁰
- ▶ Wallet-Size Smart Card Key
- ▶ Steering Wheel Paddle Shifters
- ▶ Front Console Cool Box
- ▶ Rain-Sensing Wipers with De-Icer

SEATING AND TRIM

- ▶ Perforated Premium Leather Seat Surfaces
- ▶ Heated and Ventilated Front Seats
- ▶ Heated and Ventilated Outboard Middle-Row Seats
- ▶ Heated Wood and Leather Trimmed Steering Wheel
- ▶ 12-Way Driver (Including Lumbar) and 10-Way Front Passenger (Including Lumbar) Power-Adjustable Seats
- ▶ Power-Sliding, 60/40 Split Middle-Row Seat with 40/20/40 Split Seatback
- ▶ Power-Folding, 50/50 Split Third-Row Seats
- ▶ Illuminated Lexus Doorsill Trim

AUDIO, COMMUNICATIONS AND INSTRUMENTATION

- ▶ 19-Speaker Mark Levinson® Reference Surround Sound Audio System with 7.1-Channel Architecture and In-Dash, Single-Feed, Six-Disc DVD/CD Auto-Changer³⁴
- ▶ Wireless Charger
- ▶ Voice-Activated Navigation System¹ with Remote Touch Interface
- ▶ 12.3" High-Definition TFT Liquid Crystal EMV Display
- ▶ Dual Screen Rear Seat DVD Entertainment System⁸⁹
- ▶ Electroluminescent Instrumentation
- ▶ Integrated XM® Satellite Radio⁵
- ▶ 2 USB Audio Inputs for iPhone®/iPod® Compatible Music Player Integration with Audio System⁶
- ▶ Bluetooth® Audio Profile for Wireless Integration of Compatible Music Players with In-Vehicle Audio System⁷
- ▶ Drive Mode Select with Normal, Eco, Comfort, Sport S/S+ and Customize Modes

Standard Safety and Security

ACTIVE SAFETY

- ▶ Lexus Safety System+
 - ▶ Automatic High Beam²⁷
 - ▶ Lane Departure Alert³⁰
 - ▶ Dynamic Radar Cruise Control
 - ▶ Pre-Collision System¹⁶
- ▶ Blind Spot Monitor²⁸ with Rear Cross Traffic Alert²⁹
- ▶ Electronic Parking Brake (EPB)
- ▶ Vehicle Stability Control (VSC)¹⁴
- ▶ Electronic Brake-Force Distribution (EBD)¹⁵
- ▶ Smart Stop Technology²¹
- ▶ Direct Tire Pressure Monitor System¹⁸
- ▶ Full-Time 4WD with TORSEN® Limited-Slip Centre Differential²³
- ▶ Hill-Start Assist Control (HAC)¹⁷
- ▶ Downhill Assist Control (DAC)¹⁷
- ▶ Variable Gear-Ratio Steering (VGRS)
- ▶ Manual-Locking Centre Differential
- ▶ Crawl Control
- ▶ Multi-Terrain Traction Control
- ▶ Offroad Turn Assist
- ▶ Trailer Sway Control
- ▶ LED Daytime Running Lamps
- ▶ Bi-LED Headlamps with Dynamic Auto-Levelling
- ▶ Intelligent High-Beam Headlamps²⁷
- ▶ Headlamp Washers
- ▶ LED Brake Lamps
- ▶ Power-Folding, Heated Auto-Dimming Side View Mirrors with Puddle Lamps

PASSIVE SAFETY

- ▶ Driver and Front Passenger Airbag System (SRS)¹⁹
- ▶ Front Seat-Mounted Side Airbags¹⁹
- ▶ Front and Rear Side Curtain Airbags¹⁹
- ▶ Driver and Front-Passenger Knee Airbags¹⁹
- ▶ Middle-Row Outboard Seat-Mounted Side Airbags¹⁹
- ▶ Child Restraint System (CRS) Tether Anchor Brackets for Middle-Row Outboard Seats¹⁹
- ▶ Active Front Headrests¹¹

SECURITY

- ▶ Vehicle Theft-Deterrent System
- ▶ Engine Immobilizer System

Standard Specifications

BODY & DIMENSIONS

- ▶ **Overall Length (w/towing hitch)** 5,080 mm/200"
- ▶ **Wheelbase** 2,850 mm/112.2"
- ▶ **Ground Clearance** 225 mm/8.9"
- ▶ **Width** 1,980 mm/78"
- ▶ **Height** 1,910 mm/75.2"
- ▶ **Headroom (Front)** 972 mm/38.3"
- ▶ **Headroom (Middle)** 989 mm/38.9"
- ▶ **Headroom (Rear)** 909 mm/35.8"
- ▶ **Legroom (Front)** 1,090 mm/42.9"
- ▶ **Legroom (Middle)** 875 mm/34.4"
- ▶ **Legroom (Rear)** 721 mm/28.4"
- ▶ **Shoulder Room (Front)** 1,550 mm/61"
- ▶ **Shoulder Room (Middle)** 1,500 mm/59.1"
- ▶ **Shoulder Room (Rear)** 1,582 mm/62.3"
- ▶ **Fuel Tank Capacity** 93 litres/20.4 gallons
- ▶ **Cargo Capacity (Max)**
 - Behind Front Seats 1,267 litres/44.7 cubic feet
 - Behind Middle Seats 701 litres/24.8 cubic feet
 - Behind Rear Seats 259 litres/9.1 cubic feet
- ▶ **Approach Angle** 25 degrees
- ▶ **Departure Angle** 20 degrees
- ▶ **Max Passenger Seating** 8

ENGINE

- ▶ **Type** ▶ V8, 5.7 litres
 - ▶ Dual Variable Valve Timing with intelligence (VVT-i)
- ▶ **Horsepower** 383 hp @ 5,600 rpm¹²
- ▶ **Torque** 403 lb-ft @ 3,600 rpm¹²
- ▶ **Curb Weight** 2,680 kg / 6,000 lb
- ▶ **Towing Capacity (Max)** 3,175 kg / 7,000 lb²⁵
- ▶ **Fuel Economy Estimates (City/Hwy/Combined)**
 - ▶ 18.3 / 12.9 / 15.9 L/100 km¹³
 - ▶ 15 / 22 / 18 mpg¹³

DRIVETRAIN

- ▶ **Type** ▶ Full-Time 4WD with TORSEN® Limited-Slip Centre Differential²³ (with Manual Locking Feature)
- ▶ **Transmission** ▶ 8-Speed Automatic
 - ▶ Electronically Controlled Transmission with intelligence (ECT-i)
 - ▶ Sequential Shift
- ▶ **Transfer Case** 2-Speed, 1,000:1 / 2.618:1
- ▶ **Final Drive Ratio** 3.307:1

CHASSIS

- ▶ **Front Suspension**
 - ▶ Independent, Double-Wishbone with Coil Springs
 - ▶ Electronically Controlled Shock Absorbers and Stabilizer Bar
- ▶ **Rear Suspension**
 - ▶ Four Link with Coil Springs
 - ▶ Electronically Controlled Shock Absorbers and Stabilizer Bar
 - ▶ Adaptive Variable Suspension (AVS) with Active Height Control (X-AHC) and Automatic Load Levelling
- ▶ **Steering**
 - ▶ Variable Gear-Ratio Steering (VGRS)
- ▶ **Brakes**
 - ▶ Four-Wheel Discs
 - ▶ 13.4" Ventilated Front Discs
 - ▶ 13.6" Ventilated Rear Discs
 - ▶ Four-Channel Multi-Terrain Anti-Lock Brake System (ABS)
 - ▶ Electronic Brake-Force Distribution (EBD)¹⁵
 - ▶ Brake Assist (BA)¹⁵
 - ▶ Electronic Parking Brake (EPB)
- ▶ **Tires**
 - ▶ P275/50R21 All-Season Tires
 - ▶ Full Size Spare Tire with Alloy Wheel

Wheels



Standard
21" 10-Spoke Aluminum
Alloy Wheels

LX ACCESSORIES, COLOURS & TRIM

Accessories



Cargo Liner



Cargo Net



Hitch Ball - 2 5/16" - 14,000 lbs



Hitch Ball 2" - 6,000 lbs



Paint Protection Film

Exterior



Eminent White Pearl0077



Nebula Grey Pearl01H9



Atomic Silver01J7

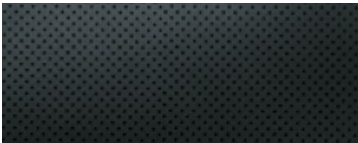


Nightfall Mica08X5

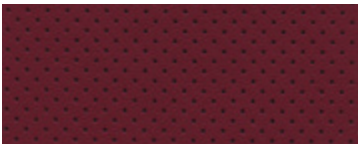
Interior



Premium Leather - Perforated Parchment



Premium Leather - Perforated Black

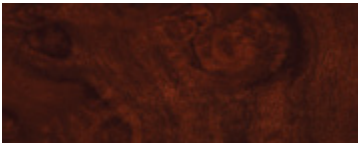


Premium Leather - Perforated Cabernet

Interior Trim



Dark Brown Walnut



Matte Walnut



Linear Espresso Wood



WARRANTY & SERVICES

SERVICE COMMITMENT

On top of enjoying the highest quality product, Lexus also delivers through a professional Dealer network, a unique and uncompromising level of after-sales service. First Class Service Concept. The highest level of professionalism and vehicle support ensure that Lexus ownership experience is as luxurious as the vehicles.

WARRANTY

Our Lexus Warranty Comprehensive Coverage includes:
48 months/80,000 km

Service Replacement Parts Warranty

24 months/40,000 km
Applicable to Lexus Genuine Parts installed by a Lexus Dealer on a Lexus vehicle or purchased over the counter

Hybrid-Related Components

96 months/160,000 km
(applies to battery control module, hybrid vehicle control module, hybrid battery and the inverter/converter)

Powertrain

72 months/110,000 km

Corrosion Perforation

72 months/unlimited kilometres

Major Emission Control Components

96 months/130,000 km

Please see your Lexus Dealer for details. Lexus will even provide five days of alternate transportation if your vehicle is required to stay at the dealership for an extended period of time due to a warrantable condition.

EXTRA CARE PROTECTION

Extend beyond the new vehicle warranty and enhance your peace of mind with Lexus Extra Care Protection.

ROADSIDE ASSISTANCE

As a proud owner of a Lexus vehicle you won't have to worry about obtaining assistance when mishaps requiring Emergency Roadside Service or Mechanical Breakdown Towing are needed. Throughout Canada and the continental U.S., our Central Emergency Roadside Services Operator will always be there to ensure you receive prompt, efficient services from one of the many facilities qualified under our approved Roadside Assistance Program. Twenty-four hours a day, 365 days a year we will be there to help.

LEXUS FINANCIAL SERVICES

Come talk to the experts whose exclusive business is financing and leasing Lexus vehicles. You'll find our interest rates fully competitive and our terms flexible – up to 72 months. Our online services conveniently allow you to confirm current rates and receive your credit approval in advance of selecting the Lexus that's right for you. For help, visit your Lexus Dealer or lexus.ca, or call 1-800-26-LEXUS.

LEXUS CANADA

Every effort has been made to ensure the specifications and equipment shown are accurate based on information available at time of printing. In some cases, certain changes in standard equipment, options or product delays may occur, which would not be reflected in this brochure. Lexus Canada reserves the right to make these changes without notice or obligation. Some of the photography in this brochure features U.S. or overseas models, shown with optional equipment that may not be available in Canada. Your Lexus Dealer is the best source for up-to-date information.

lexus.ca
1-800-26-LEXUS

To sign up for information on Lexus, go to **experience.lexus.ca**

Lexus Canada
One Toyota Place,
Toronto, Ontario
M1H 1H9

Vehicles in this brochure shown with optional equipment. Some features mentioned and/or shown in this brochure may only be available as part of an optional package. Under very cold conditions, the operation of some vehicle electronic systems using liquid crystal technology (such as CD, DVD, NAV and Audio displays) may be adversely affected until a warmer interior vehicle temperature is reached. Lexus reminds you to place small children in CSA-approved car seats – in the rear seats, to always wear your seatbelts, and to drive safely. **1.** The Navigation System is designed to assist in locating an address or point of interest. Discrepancies may be encountered between the system and your actual location. Road system changes may affect the accuracy of the information provided. Rely on your common sense to decide whether to follow a specified route. Detailed coverage not available for every city or roadway. Periodic updates available at an additional cost. See your Navigation System Owner's Manual for further details. **2.** The backup camera does not provide a comprehensive view of the rear area of the vehicle. You should also look around outside your vehicle and use your mirrors to confirm rearward clearance. **3.** Mark Levinson is a registered trademarks of Harmon International Industries Inc. **4.** Continuous average power, all channels driven, at less than 0.1% THD; 20-20,000 Hz. **5.** Functioning Satellite Radio requires a compatible receiver and monthly service fee. Please see your Lexus Dealer for further details. Reception of satellite signal may vary depending on location. **6.** iPod and iPhone are registered trademarks of Apple Inc. **7.** Lexus tests certain Bluetooth® capable phones for compatibility with Lexus vehicles. Please see your Lexus Dealer for details. Note that the recommendation of Lexus is not a warranty of the performance for any phone and that some problems may occur with any type of handset based on the phone software version or the service coverage available in your area. Some vehicles equipped with Bluetooth® technology are available with bilingual capability. **8.** A single disc DVD player is standard on vehicles equipped with the dual-screen Rear-Seat Entertainment System. A separate DVD player or game system utilizing the centre console's video/audio inputs is required in order to use the split-screen function. **9.** Headphones are for passenger use only. Do not use while operating vehicle. **10.** The Wide-view Front and Side Monitor does not provide a comprehensive view of the front and side areas of the vehicle. You should also look around outside your vehicle and use your mirrors to confirm clearance. Cold weather will limit effectiveness and view may become cloudy. **11.** Active headrests can help reduce the extent of whiplash in certain types of rear-end collisions. **12.** Ratings achieved using the required premium unleaded gasoline with an octane rating of 91 or higher. **13.** These estimates are based on the Government of Canada's approved criteria and testing methods. The actual fuel consumption of the vehicle may vary. Refer to the Government of Canada publication EnerGuide Fuel Consumption Guide. **14.** Vehicle Stability Control (VSC) and if applicable Vehicle Dynamics Integrated Management (VDIM) are electronic systems designed to help the driver maintain vehicle control under adverse conditions. They are not substitutes for safe driving practices. Factors including speed, road conditions and driver steering input can all affect whether VSC and VDIM will be effective in preventing a loss of control. Please see your Owner's Manual for further details. **15.** Brake Assist is designed to help the driver take full advantage of the benefits of ABS. It is not a substitute for safe driving practices. Braking effectiveness also depends on proper brake-system maintenance and tire and road conditions. **16.** The Pre-Collision System is designed to help reduce the crash speed and damage in certain frontal collisions only. It is not a collision-avoidance system and is not a substitute for safe and attentive driving. System effectiveness depends on many factors, such as speed, driver input and road conditions. Please see your Owner's Manual for further information. **17.** DAC is designed to help the driver maintain vehicle control and speed on steep downhill descents. HAC is designed to help minimize backward rolling on steep ascents. These suggestions are not a substitute for safe driving judgment and practices. Factors including speed, grade, surface conditions and driver input can all affect whether DAC and HAC will be effective in preventing a loss of control. Please see your Owner's Manual for further details. **18.** The Lexus Tire Pressure Monitor alerts the driver when tire pressure is critically low. For optimal tire wear and performance, tire pressure should be checked regularly with a gauge; do not rely solely on the monitor system. Please see your Owner's Manual for details. **19.** All the airbag ("AB") systems are Supplemental Restraint Systems. All ABs (if installed) are designed to inflate only under certain conditions and in certain types of severe collisions: frontal and knee ABs typically inflate in frontal collisions; side and side curtain ABs in side collisions; Roll-Sensing Curtain ABs at a severe tilt degree, roll or lateral G-force. In all other accidents, the ABs will not inflate. To decrease the risk of injury from an inflating AB, always wear seatbelts. Do not use a rearward-facing child seat in any front passenger seat. Please see your Owner's Manual for further information/warnings. **20.** The SmartAccess system may interfere with some pacemakers or cardiac defibrillators. If you have one of these medical devices, please talk to your doctor to see if you should deactivate this system. **21.** Smart Stop Technology operates only in the event of certain simultaneous brake and gas pedal applications. When engaged, the system will reduce engine power to help the brakes to bring the vehicle to a stop. Factors including speed, road conditions, driver input can all impact stopping distance. Smart Stop Technology is not a substitute for safe and attentive driving and does not guarantee instant stopping. Please see your Owner's Manual for further details. **22.** Dynamic/Radar Cruise Control was designed to assist the driver and is not a substitute for safe and attentive driving practices. Please see your Owner's Manual for important cautions and instructions. **23.** TORSEN® is a registered trademark of Zexel Torsen, Inc. **24.** Roof rack capacity is 130 lb. Crossbars are not recommended for luggage. Please see your Owner's Manual for details. **25.** Before towing, confirm your vehicle and trailer are compatible, hooked up properly and you have any necessary additional equipment. If gross trailer weight is above 5,000 lb (2,268 kg), it is necessary to use a weight-distributing hitch with sufficient capacity. Do not exceed any Weight Ratings and follow all instructions and cautions from your trailer-hitch manufacturer and vehicle Owner's Manual. The maximum amount you can tow depends on the total weight of any cargo, occupants and available equipment. **26.** HomeLink® is a registered trademark of Johnson Controls. **27.** Automatic High Beam can help improve vision at night. However, conditions such as a dirty windshield, rapidly changing light conditions or hilly terrain will limit effectiveness so the driver may need to manually change the high beams from on to off. Please see your Owner's Manual for details. **28.** Do not rely exclusively on the Blind Spot Monitor System to determine if a lane change is safe. Always look over your shoulder and use your turn signal before changing lanes. There are severe limits to the function, detection range and clarity of the monitor system. For a complete list of limitations and directions regarding use of the monitor system, please see your Owner's Manual. **29.** Do not rely exclusively on the Rear Cross-Traffic Alert System. There are limitations to the function, detection and range of the system. You should also look around outside your vehicle, over your shoulder and use your mirrors to confirm rearward clearance. For a complete list of limitations and directions, please see your Owner's Manual. **30.** Lane Departure Alert is designed to read the lane markers of certain roads. If the vehicle approaches the outer limits of its lane, the system warns the driver that corrective action may be required. It is not a collision-avoidance system and is not a substitute for safe and attentive driving. System effectiveness depends on many factors. Please see your Owner's Manual for further information.

