



# REZILLPANEL™

FLOATING SYSTEM  
 ○ ○ ○  
 REZILLPANEL

## F L O A T I N G   S Y S T E M

### SYSTEM FEATURES AND BENEFITS

A floating sports floor system with high shock absorption and ball rebound, consisting in general of a vapor barrier, resilient Rezill pads, wood underlayment, maple flooring, sanding, sealers, finishes, game lines, and wall base.



- ① Two layers of APA rated plywood
- ② Rezill Pad

### SPECIFICATIONS

#### MANUFACTURING

**ISO 9001:2000**  
 CERTIFIED

#### SYSTEM TYPE

Floating

#### ANCHORAGE

No concrete attachment

#### SUBFLOOR CONSTRUCTION

Plywood Panel

#### RESILIENCE

Rezill Pads

#### RECYCLED CONTRIBUTION



RezillPanel includes components with recycled content

#### SLAB DEPRESSION

25/32" (20 mm) flooring – 2 1/8" (54 mm)  
 33/32" (26 mm) flooring – 2 3/8" (60 mm)

#### TESTING LABORATORY



United States Sports Surfacing Laboratory

#### CERTIFIED TESTING

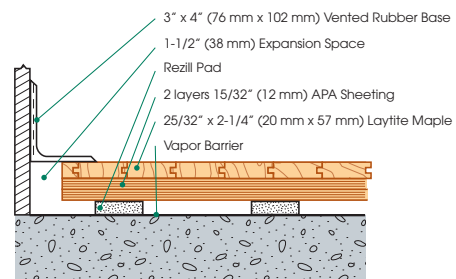


Laboratory test equipment calibrated and certified through the ISSS

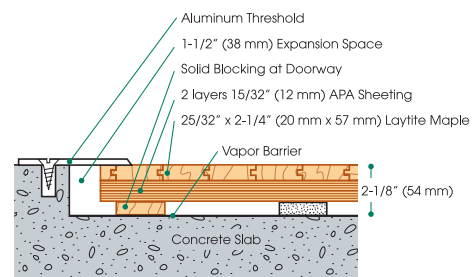
#### GREEN STATUS

Managed forests, certification available

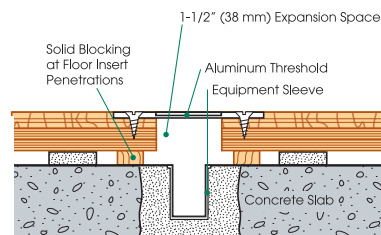
#### WALL BASE DETAIL (RezillPanel)



#### THRESHOLD DETAIL (optional accessory)



#### EQUIPMENT DETAIL (optional accessory)



©2010 Connor® is a registered trademark of Connor Sport Court International

[connorfloor.com](http://connorfloor.com)  
 1.800.283.9522