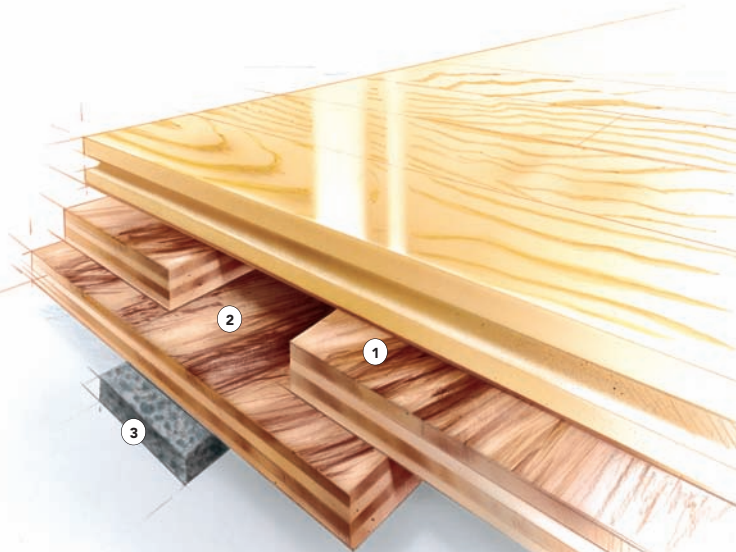


F L O A T I N G S Y S T E M

SYSTEM FEATURES AND BENEFITS

A floating sports floor system with high resiliency, consisting in general of a vapor barrier, resilient Rezill pads, wood subflooring, maple flooring, sanding, sealers, finishes, game lines, and wall base.

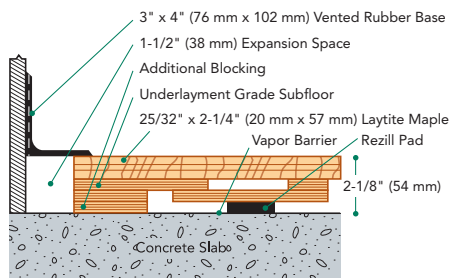


- ① Pre-assembled subfloor panels
- ② Underlayment grade plywood
- ③ Rezill Pad

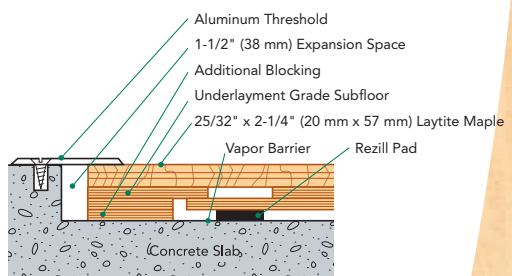
SPECIFICATIONS

MANUFACTURING	ISO9001:2000 CERTIFIED
SYSTEM TYPE	Floating System
ANCHORAGE	No concrete attachment
SUBFLOOR CONSTRUCTION	Plywood Panel
RESILIENCE	Rezill Pads
RECYCLED CONTRIBUTION	RezillFlex subfloor system includes components with recycled content
SLAB DEPRESSION	25/32" (20 mm) flooring – 2-1/8" (54 mm) 33/32" (26 mm) flooring – 2-3/8" (60 mm)
DIN STATUS	D-I-N Meets or exceeds all the requirements of DIN 18032, Part 2
TESTING LABORATORY	United States Sports Surfacing Laboratory
CERTIFIED TESTING	Laboratory test equipment calibrated and certified through the ISSS
GREEN STATUS	Managed forests, certification available

WALL BASE DETAIL



THRESHOLD DETAIL (optional accessory)



EQUIPMENT DETAIL (optional accessory)

