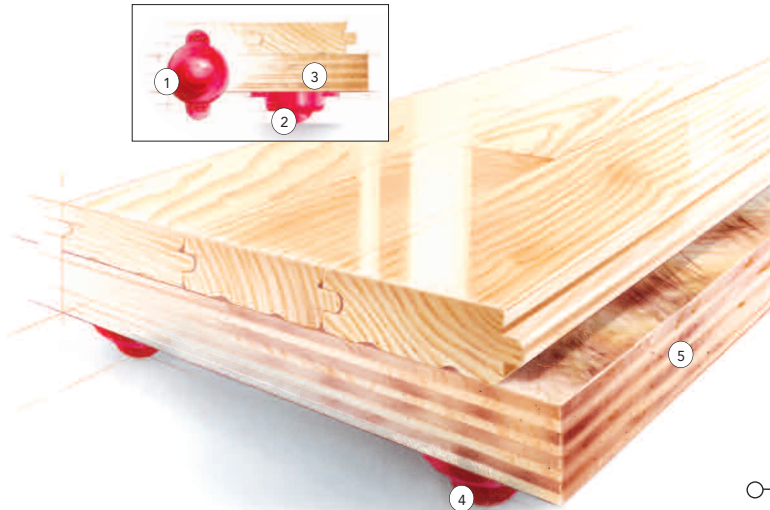


F L O A T I N G S Y S T E M



SYSTEM FEATURES AND BENEFITS

A floating sports floor system with high resiliency and uniformity, consisting in general of a vapor barrier, NeoShok resilient pads, wood subflooring, maple flooring, sanding, sealers, finishes, game lines and wall base.

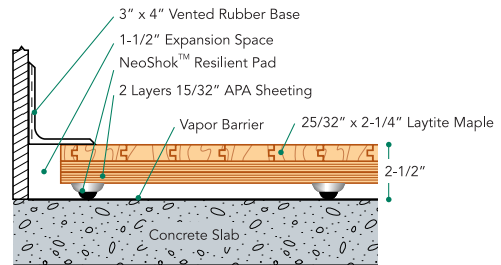


- ① Two-Stage NeoShok Pad
- ② First stage responsive to light loads
- ③ Second stage responsive to aggressive loads
- ④ Quick response contact point and excellent resilient load performance
- ⑤ Two layers of 15/32" APA rated plywood subfloor

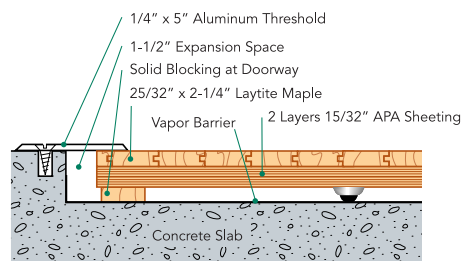
SPECIFICATIONS

MANUFACTURING	ISO9001:2000 CERTIFIED
U.S. PATENT #	4,879,857
SYSTEM TYPE	Floating System
ANCHORAGE	No concrete attachment
SUBFLOOR CONSTRUCTION	Plywood Panel
RESILIENCE	Polyurethane NeoShok Pads
SLAB DEPRESSION	25/32" flooring – 2 1/2" 33/32" flooring – 2 3/4"
TESTING LABORATORY	United States Sports Surfacing Laboratory
	
CERTIFIED TESTING	Laboratory test equipment calibrated and certified through the ISSS
	
GREEN STATUS	Managed forests, certification available

WALL BASE DETAIL



THRESHOLD DETAIL (optional accessory)



EQUIPMENT DETAIL (optional accessory)

