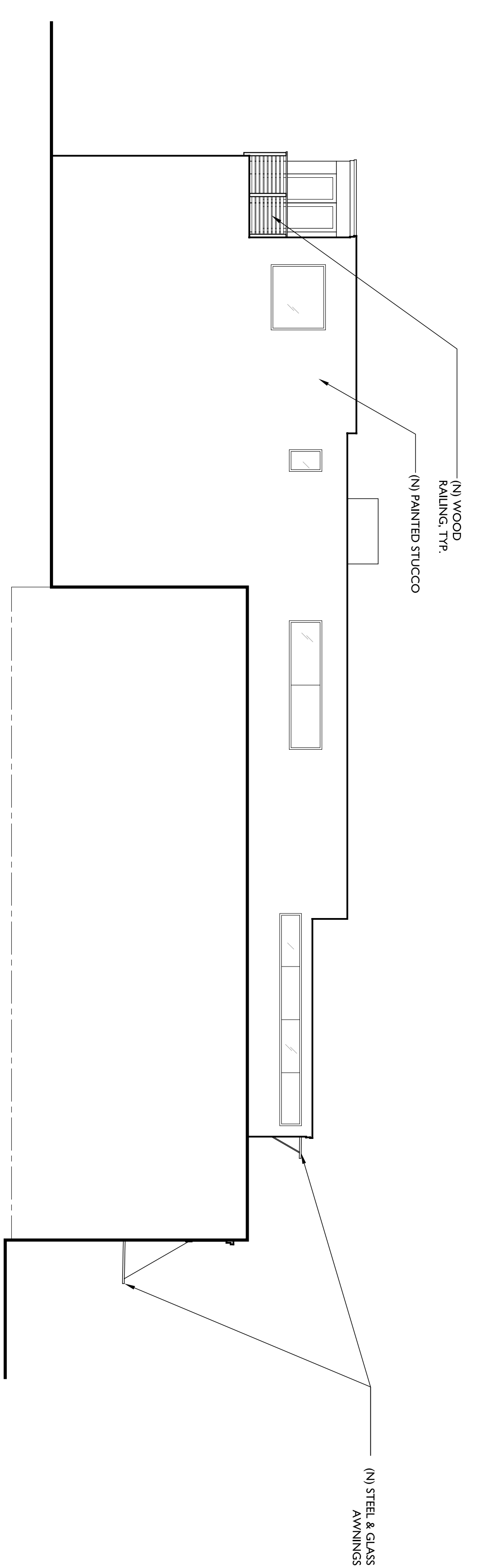


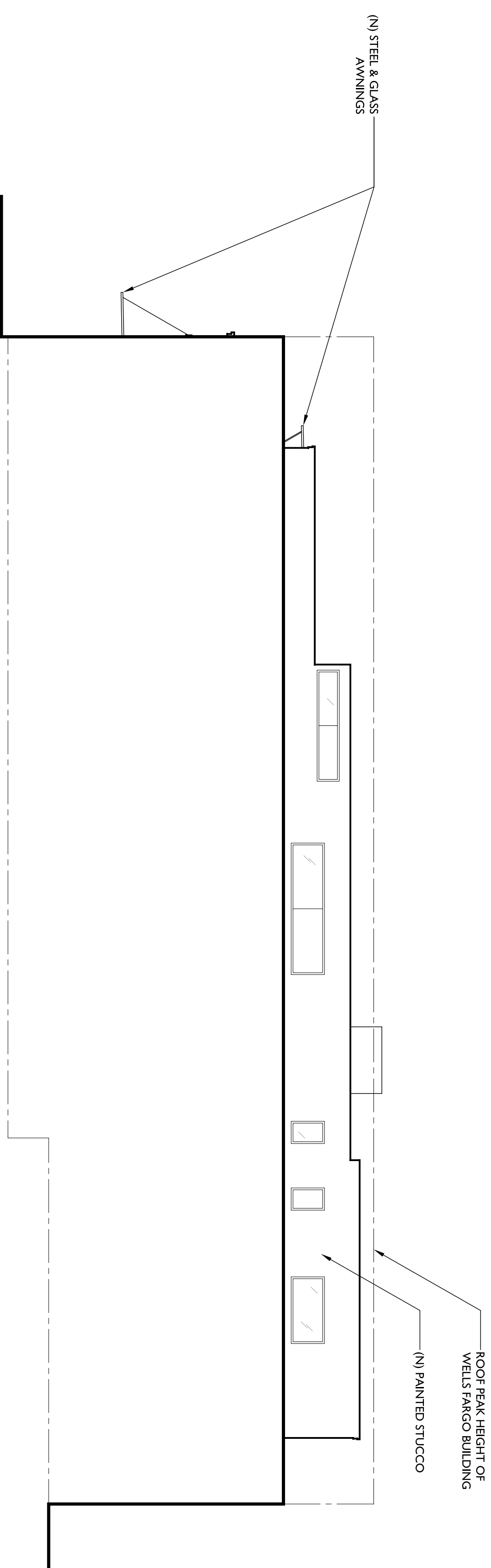
REVISION:	DATE:
1	
2	
3	
4	
5	
6	
7	
8	
9	
10	

THIS DOCUMENT IS THE PROPERTY OF KAHN DESIGN ASSOCIATES AND IS NOT TO BE REPRODUCED, COPIED, OR TRANSMITTED IN ANY FORM OR BY ANY MEANS, ELECTRONIC OR MECHANICAL, INCLUDING PHOTOCOPYING, RECORDING, OR BY ANY INFORMATION STORAGE AND RETRIEVAL SYSTEM. THE ARCHITECT'S SEAL AND VENT SIGNATURE ARE REQUIRED FOR ALL CONTRACT DOCUMENTS. HEREBY, I, THE ARCHITECT, CERTIFY THAT I AM A LICENSED ARCHITECT IN THE STATE OF CALIFORNIA. KAHN DESIGN ASSOCIATES, ARCHITECTS, 1810 SIXTH STREET, BERKELEY, CA 94710. PHONE: 510.841.3555 FAX: 510.841.1225. WWW.KAHNDSIGNASSOCIATES.COM. ALL RIGHTS RESERVED. © 2005 KAHN DESIGN ASSOCIATES.

5 NOT USED



4 SIDE - NORTH ELEVATION
SCALE: 1/8" = 1'-0"



3 SIDE - SOUTH ELEVATION
1/8" = 1'-0"

2 ELEVATION NOTES

1 ELEVATION NOTES

NEW ELEVATIONS

HISTORIC REMODEL & ADDITION
BOLFING'S ELMWOOD HARDWARE BLDG.
2947 COLLEGE AVENUE
BERKELEY, CA 94705 -2203 (A.P.N. 052-1567-018)

ARCHITECTURE
kahn design associates
1810 sixth street, berkeley, ca. 94710
phone: 510.841.3555 fax: 510.841.1225
kahndesignassociates.com

A4.2
SHEET
© KAHN DESIGN ASSOCIATES 2005

SCALE: 1/8" = 1'-0"
DRAWN BY: CBG
JOB NO.: TL801
SHEET