

REVISION:	DATE:
1. DRAWN BY: CEG	09.29.06
2. CHECKED BY: TLB01	
3. APPROVED BY: [Signature]	
4. SUBMITTED	

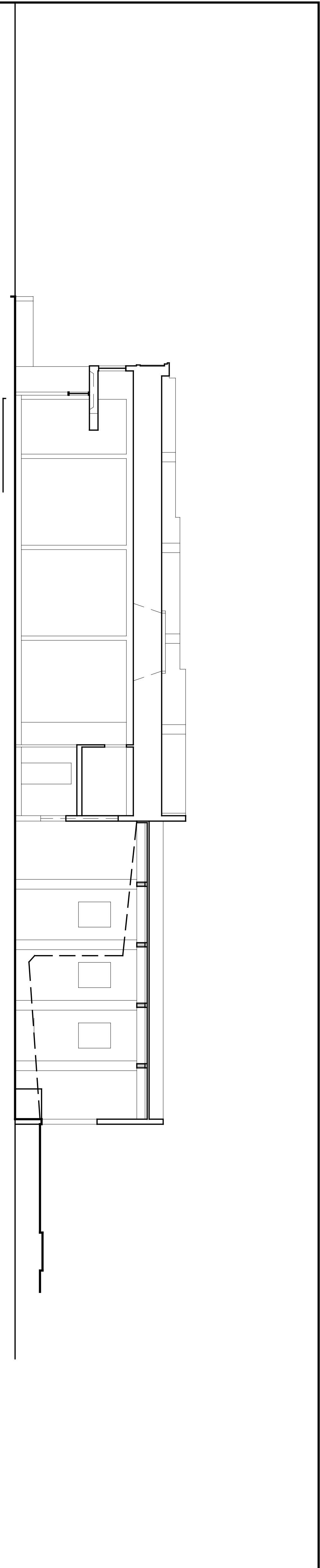
THIS DOCUMENT IS THE PROPERTY OF KAHN DESIGN ASSOCIATES AND IS NOT TO BE REPRODUCED, COPIED, OR TRANSMITTED IN ANY FORM OR BY ANY MEANS, ELECTRONIC OR MECHANICAL, WITHOUT THE WRITTEN PERMISSION OF KAHN DESIGN ASSOCIATES.

ARCHITECTURE
 kahn design associates
 1810 sixth street, berkeley, ca. 94710
 phone: 510.841.3555 fax: 510.841.1225
 kahndesignassociates.com

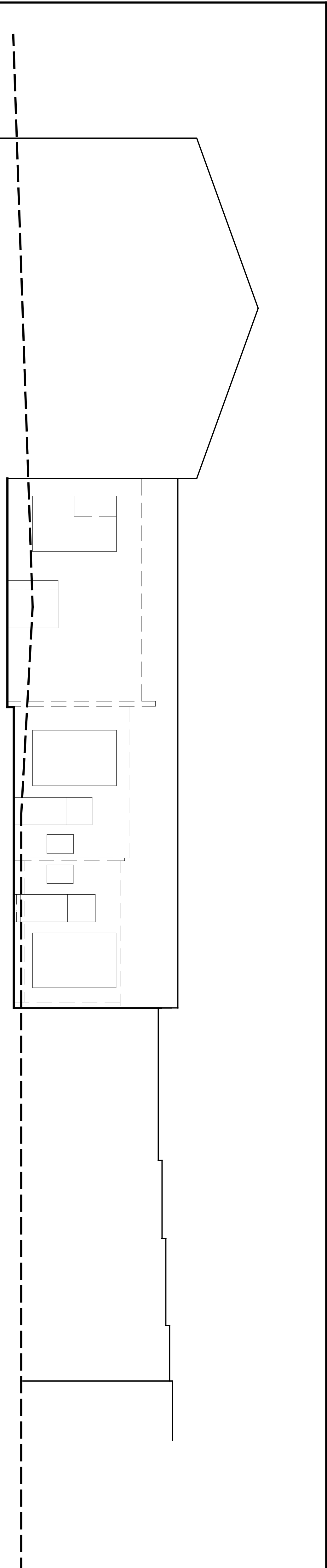
HISTORIC REMODEL & ADDITION
BOLFING'S ELMWOOD HARDWARE BLDG.
 2947 COLLEGE AVENUE
 BERKELEY, CA 94705 -2203 (A.P.N. 052-1567-018)

EXISTING ELEVATIONS
 SCALE: 1/8" = 1'-0"
 DRAWN BY: CEG
 JOB NO.: TLB01
 SHEET

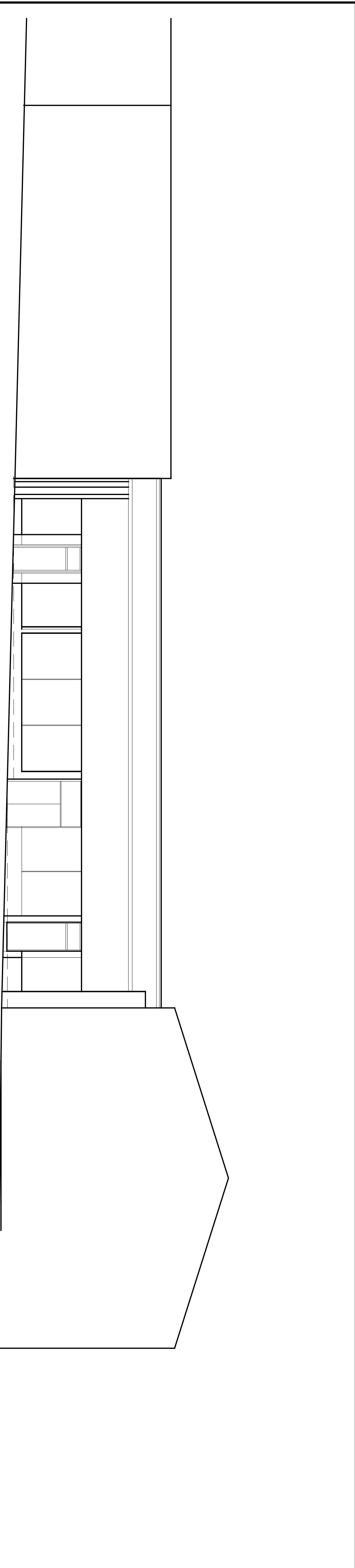
A4.0
 © KAHN DESIGN ASSOCIATES 2006



5 SECTION
 SCALE: 1/8" = 1'-0"



4 REAR - EAST ELEVATION
 SCALE: 1/8" = 1'-0"



3 FRONT - WEST ELEVATION @ COLLEGE STREET
 SCALE: 1/8" = 1'-0"

2 ELEVATION NOTES

1 ELEVATION NOTES