



540SAS-4

4x5.25" In Wall Subwoofer

Small Aperture Series

Key Features:

- 4-5.25 inch low profile subwoofer drivers for slim in wall design
- Band-pass box design for optimal bass tuning.
- Small Aperture for minimal visibility

Applications:

- Home Theater/Audio
- Marine Audio
- Low visibility distributed audio systems

The James Loudspeaker 54SA-4 is an in-wall subwoofer designed to be concealed from view. Like all speakers in the SA series a small opening in the wall or ceiling is the only visible portion of the speaker giving the series its name: Small Aperture. The 3.4-inch depth allows the speaker to be placed within 2x4in-studded walls and be concealed by drywall, while a 3.5-inch square grille is the only visible portion of the speaker.

The 54SA-4 is built using aircraft grade aluminum and has a half-inch thick back plate to ensure maximum durability and limit the rear sound transmission. The speaker comes with bracket mounts to secure the frame to wall studs and ensure that it is firmly locked in place. Dynamat (a viscous adhesive material) is used to dampen any ringing in the aluminum enclosure.

The 54SA-4 is equipped with a standard two-prong spring-loaded terminal for easy attachment of speaker wires. The Enclosure houses 4 rear mounted 5.25 inch 8-ohm drivers in series parallel rendering a nominal impedance of 8 ohms.

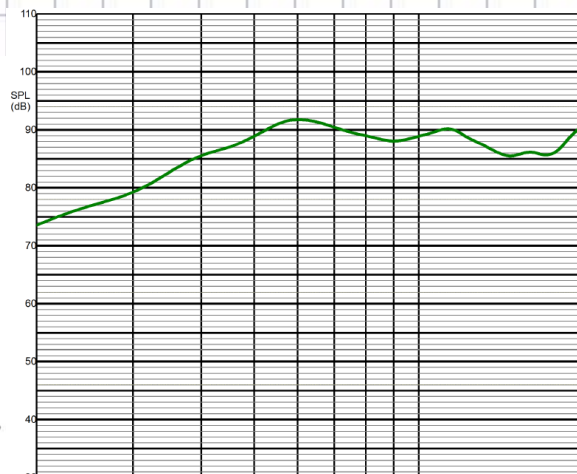
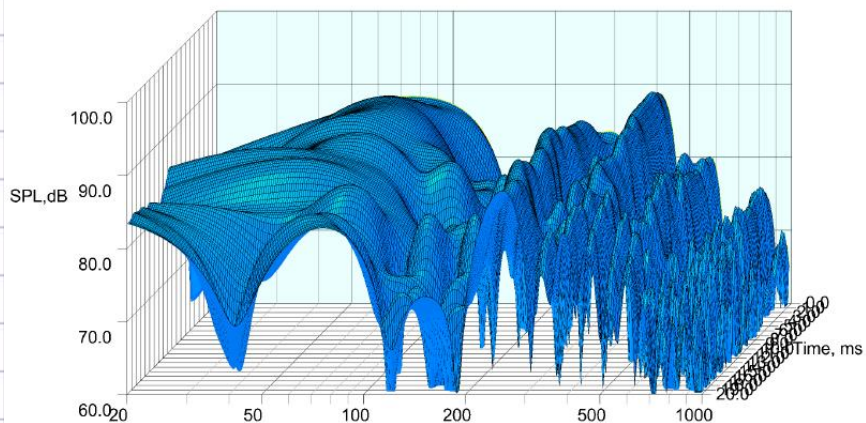


System Type	4x5.25" Band-pass in-wall Subwoofer
Frequency Range	38-160Hz
Recommended Crossover Frequency	80Hz Low-pass - 24dB/octave
Power Rating (continuous/program/peak)	100W/200W/400W
Sensitivity (2.83V @ 1m)	92dB
Max SPL	112dB
Nominal Impedance	4 Ohms
Low Frequency Driver	4 5.25" (133mm) James Loudspeaker Woofer
Input Connectors	Spring Loaded 2 Prong
Mounting	Aluminum Bracket Mount
Dimensions (HxWxD)	(36x14x3.4) in (914.4x355.6x86.4) mm
Net weight	40.5lbs/18.4kg
Grille Dimensions (HxWxD)	(3.5x3.5x.25) in (88.9x88.9x6.4) mm
Grille Finishes	White Gloss or Preference

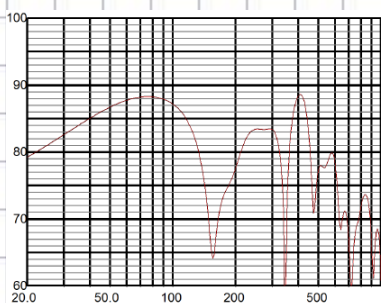


540SAS-4

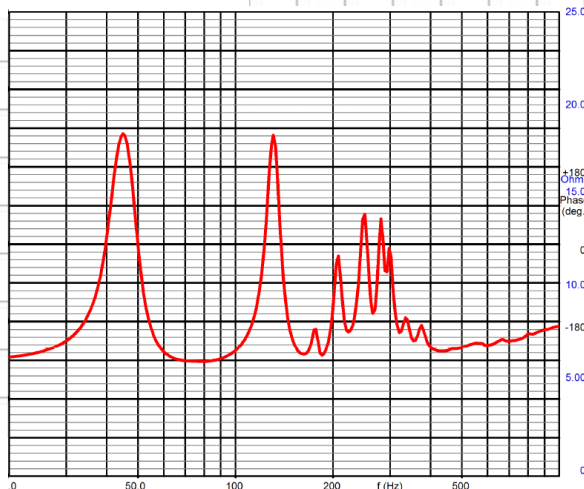
4x5.25" In Wall Subwoofer



SPL-Response



Waterfall Graph



Imnedance

Drawing of 102SA-5

