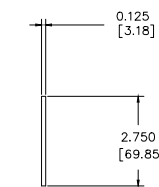
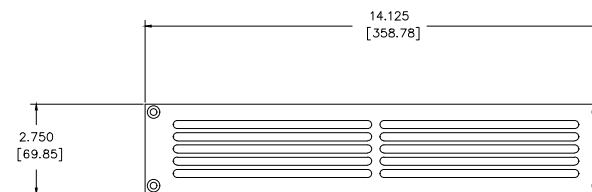
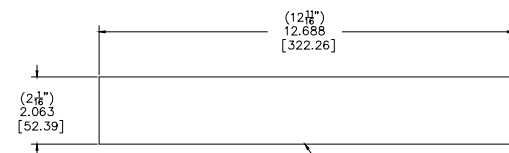
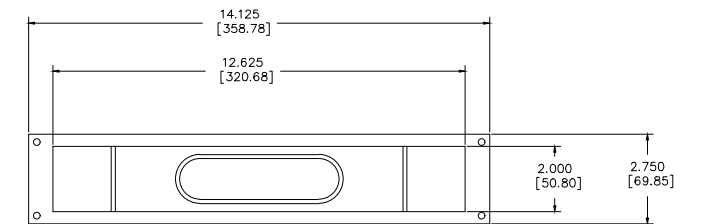
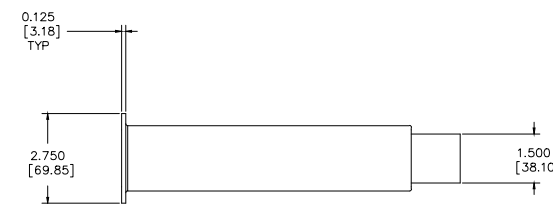
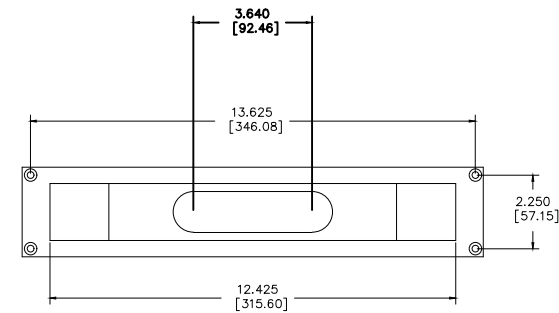
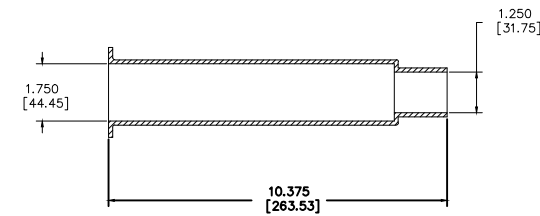
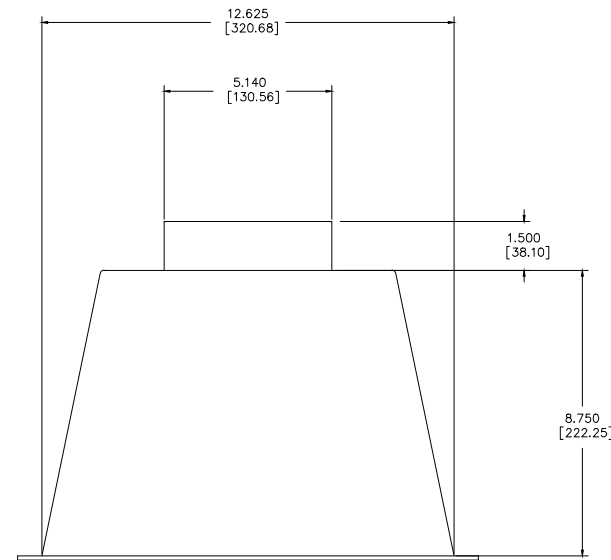


REVISIONS				
ECO	REV.	DESCRIPTION	DATE	APPROVED
	A	RELEASE FOR PRODUCTION	06-13-07	



CUT OUT DIMENSIONS

NOTES:

1. MATERIAL: 0.125 ALUMINUM
FINISH: BLACK POWDER COATED
UNLESS OTHERWISE SPECIFIED
2. PART TO BE FREE OF COSMETIC BLEMISHES
3. CLEAN SHARP EDGES

JAMES LOUDSPEAKER	
TK4S-3X14-6	
4" STRAIGHT TOE-KICK	
P/N: TK4S-3X14-6	DWR #: 070613-A00
REVISED BY:	
DRAWN BY: M. GALLES	FILE:
DATE: 06-13-07	SCALE:
APPROVED:	
DRAFTING APPROVED:	
DO NOT SCALE DRAWING	
DRAWING NOT TO BE USED FOR CNC	
TOLERANCES: ANG: ± = .5° FRACT. ± = 1/32	
DECIMALS: .XX ± = .01 .XXX ± = .005	
REVISION: A	SHEET 1 OF 1