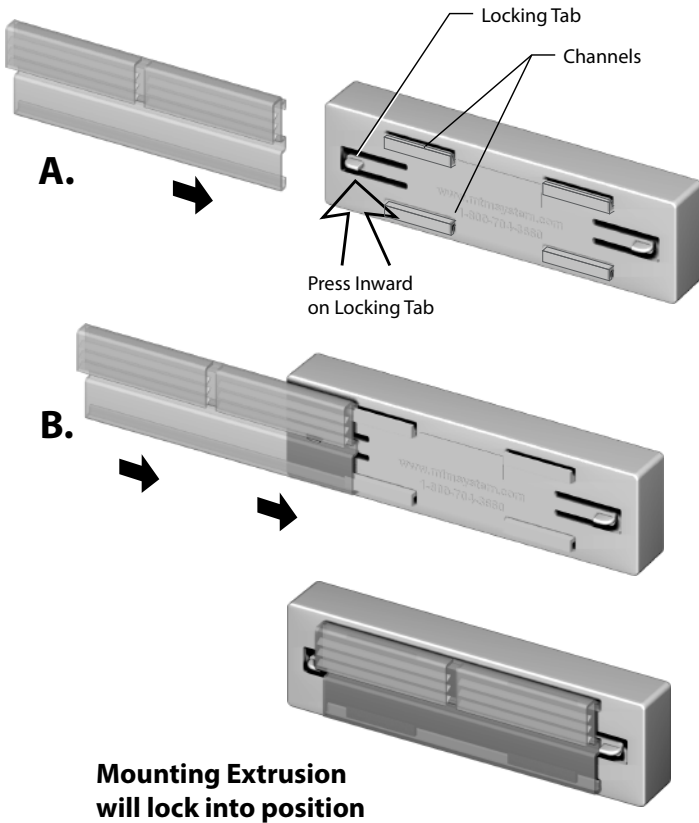


Scroll Pricer

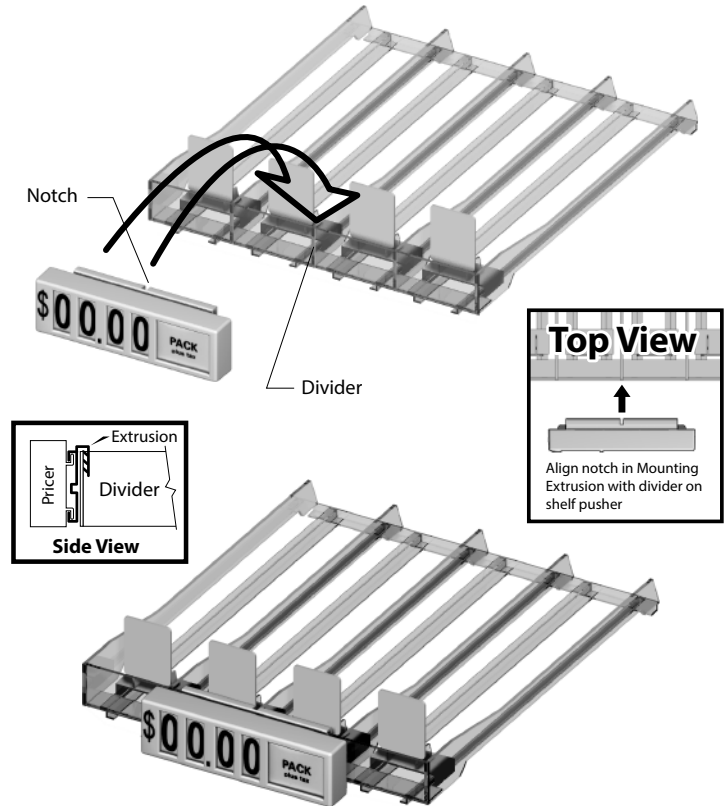
For use with Mounting Extrusion

1. A. Push the Locking Tab inward on the backside of the Pricer.

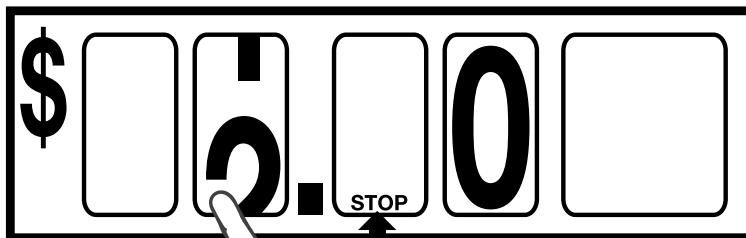
B. Slide the Mounting Extrusion onto the channels.



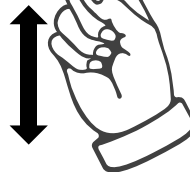
2. Attach Pricer and Extrusion onto the front of Pusher Shelf. **Note:** Align the notch on the Mounting Extrusion with the divider panel on pusher shelf.



3. How To Set The Price And Message



With finger tip, push scroll up or down until desired numeral appears, center in window.



When "STOP" appears, do not scroll any further.