

TREE OF LIFE CONGREGATION

COLUMBIA, SOUTH CAROLINA

**“KOL T.O.L.” – THE “VOICE OF THE TREE OF LIFE”
MONTHLY NEWSLETTER**

JUNE – JULY 2012 / SIVAN – TAMMUZ – AV, 5772

JUNE/JULY WORSHIP SERVICES

Friday, June 1

6:45 p.m. KIDZ Shabbat
7:30 p.m. Shabbat Eve Service*
Torah: *Naso*, Num. 4:21 – 7:89

Saturday, June 2

10:00 a.m. Shabbat Morning Service & Torah Study

Friday, June 8

7:30 p.m. Shabbat Evening Bar Mitzvah Service of
Howard Jolles
Torah Reading: *Behaalotecha*, Num. 8:1 – 12:16

Friday, June 15 **Casual Summer Shabbat**

6:00 p.m. Kabbalat Shabbat Reception
6:30 p.m. Early Shabbat Eve Service
Torah: *Shelach Lecha*, Num. 13:1 – 15:41

Friday, June 22

7:30 p.m. Shabbat Eve Service
Torah: *Korach*, Num. 16:1 – 18:32

Friday, June 29

7:30 p.m. Shabbat Eve Service
Torah: *Chukat*, Num. 19:1 – 22:1

Friday, July 6

7:30 p.m. Shabbat Eve Service
Torah: *Balak*, Num. 22:2 – 25:9

Friday, July 13

7:30 p.m. Shabbat Eve Service
Torah: *Pinchas*, Num. 25:10 – 30:1

Saturday, July 14

10:00 a.m. Shabbat Morning Service & Torah Study

Friday, July 20 **Casual Summer Shabbat**

6:00 p.m. Kabbalat Shabbat Reception
6:30 p.m. Early Shabbat Eve Service
Torah: *Mattot/Masei*, Num. 30:2 – 36:13

Friday, July 27

7:30 p.m. Shabbat Eve Service
Torah: *Devarim*, Deut. 1:1 – 3:22

Friday, August 3

7:30 p.m. Shabbat Eve Service
Torah: *Va'etchanan*, Deut. 3:23 – 7:11

* Childcare is available for services.

Please join us for a
Casual Summer Shabbat



Friday, June 15
Friday, July 20
Friday, August 17

6:00 p.m. Kabbalat Shabbat &
First-Course Oneg Shabbat
6:30 p.m. Early Shabbat Evening Service

See inside for details.

INSIDE THIS ISSUE

<i>Temple News</i>	2
<i>From the Rabbi</i>	3
<i>Religious School</i>	4-5
<i>Youth News</i>	6-7
<i>Sisterhood, Brotherhood, & Bucks Back</i>	8
<i>Green Team Report</i>	9
<i>Member News</i>	10-11
<i>Yahrzeits</i>	12
<i>Contributions</i>	13
<i>Calendar</i>	14-15

TEMPLE NEWS

MAZAL TOV TO THE TREE OF LIFE CONGREGATION'S OFFICERS AND BOARD MEMBERS FOR 2012-2013

President:	Rick Cohn
1 st Vice President:	Alan Brill
2 nd Vice President:	Paul Westfall
Treasurer:	Marc Posner
Secretary:	Lisa Helfer
Immediate Past President:	Steve Savitz

Newly elected Board Members:
Eric Feuerstein, Donna Magaro, Arline Polinsky, Amy Scully, & Julie Strauss

Continuing Board Members:
Laney Cohen, Richard Cohen, Annette Goldstein, Bruce Greenberg, Debbie Greenhouse,
Kim Moses, & Marc Rapport

NEW SHABBAT SERVICE EXPERIENCE FOR THE SUMMER

Friday, June 15 • Friday, July 20 • Friday, August 17

6:00 p.m. Kabbalat Shabbat & First-Course Oneg Shabbat
6:30 p.m. Casual Shabbat Evening Service

Let's try something new this summer! We are introducing an early, "come as you are" Shabbat evening worship experience. We will begin at 6:00 p.m. with candles, Kiddush, and challah in the Social Hall, along with a special "Oneg Shabbat" featuring appetizers and singing. Drop by whenever you can, catch your breath, and have a little nosh, as we prepare to welcome Shabbat.

Our Shabbat Service will follow at 6:30 p.m. The hour-long service will be more informal, with everyone sitting closer together and featuring some of our favorite melodies. It will be a great opportunity for a more casual, earlier, summer Shabbat evening. Our hope is to appeal to families and individuals of all ages.

Come and try our new schedule on the third Friday of the month for June – August. There will be no 7:30 p.m. service on these evenings.

We will stick to our normal worship schedule on the other Friday evenings throughout the summer. See you at Temple! Shabbat Shalom!

SAVE THE DATE

**DINNER, HAVDALAH and
3 MOVIES**

**Saturday, July 14th
6 – 9 p.m.
at Tree of Life**

Only \$5 per person!

Please contact Risa
for more information.

MISHKAN T'FILAH: A Reform Siddur

This summer we will begin to use the new prayerbook of the Reform Movement, published by the Central Conference of American Rabbis (CCAR) Press. After many trial editions and revisions, the new Siddur was finalized in 2007 and is now used in a majority of Union for Reform Judaism (URJ) congregations.

The purchase of the first 100 prayerbooks was made possible by four generous donations

- by Ellen Humphries, in honor of the role the Tree of Life Congregation has played in the lives of her children: Violette, Elliott, and Oliver Chartock;
- by Debbie & Rick Cohn, in memory and in honor of their parents;
- by the Confirmation Class of 5772;
- and by Barton & Lyanne L. Wassermann, in honor of the Bat Mitzvah of their beloved granddaughter, Madeline Sara Wassermann.

We are grateful for these thoughtful gifts that have enabled us to buy new prayerbooks for our congregation. We plan on purchasing more copies of *Mishkan T'filah* in the near future (including some large-print copies). The cost of the book is \$30. Donations may be made to the TOL Prayerbook Fund. Thank you for your support.

We would also like to thank Barry & Lyanne Wassermann for the recent gift of a beautiful Tree of Life Shabbat set: including candlesticks, Kiddush cup, challah board and knife, as well as a *chanukiah*.

FROM THE RABBI



What a Year! Now Let's Get Ready for More!

by Rabbi Daniel M. Sherman

I am writing this article at the same time as I am preparing for our congregation's Annual Meeting at the end of May.

As I look back on the 2011-2012 programmatic year, many highlights jump out. Here is just a partial list, as they occurred on the calendar: Pink Shabbat, the High Holy Days, Sukkot, Consecration, Simchat Torah, hosting the Jewish Historical Society of South Carolina, the Confirmation trip to New York, our weekend with Cantor Rosalie Boxt, hosting our annual Community Thanksgiving Service and Turkey Drive, attending the URJ Biennial Convention in D.C., the Chanukah dinner and service, *Magevet* – the Jewish a cappella singing group from Yale University, TOL's 116th birthday in January,

Brotherhood's annual Blood Drive, our Tu Bishvat Service & Seder, the Jewish Federation's Mitzvah Day, our Wine Tasting social event, the Purim dinner & service followed by a joint Purim celebration with Beth Shalom Synagogue, the Purim Carnival, the Congregational Passover Seder, the Big Nosh™, a special Israel night in observance of Yom HaAtzmaut, Sisterhood Sabbath, Teacher Appreciation Shabbat, the Four Fathers Band, and Shavuot & Confirmation. I could go on and on.

There was a lot going on at Temple this year. Seven of our students became B'nai Mitzvah (including Ward Jolles this month). We welcomed several babies into our TOL family. We had an excellent year of Religious School, thanks first and foremost to our director, Risa Strauss. I also want to thank all of our teachers and staff, teaching assistants, Religious School committee, volunteers, parents, and, of course, our students.

We had many wonderful worship services this year. I want to thank our music director, Sharon Witherell, for all that she brings to our services. She is great to work with, and we are very fortunate to have her.

I was pleased with our Adult Education course offerings this year. It is great having Rabbi Marcus and Rabbi Leah Doberne-Schor joining Risa and me in teaching classes.

Sisterhood, Brotherhood, and COFTY (our Temple Youth Group) all had good years – together they add so much to the life of our congregation. They also offer outstanding opportunities to get involved.

I want to thank all of our hardworking volunteers, who do so much for our Temple. Special thanks go to Cheryl Nail for all of her hard work in putting together the newsletter each month (along with the many other things she does around Temple).

I also want to thank our Temple leadership. Thank you to Steve Savitz, our president, and all of our officers, board members, and committee chairs for all of your efforts, hard work, and time spent on behalf of our congregation. So much happens behind the scenes – please know how much we appreciate all that you do. And, of course, no list would be complete without thanking Linda Frederico and Demitris Gilmore, too.

We have done a lot in this year that is quickly coming to an end, but there is even more for us to do. Our mission statement calls on the Tree of Life Congregation to fulfill the needs of the Reform Jewish community of the greater midlands in our role as a *Beit Tefillah*, *Beit Midrash*, and *Beit Knesset*. Here are some challenges for us in the upcoming year.

Beit Tefillah means a House of Prayer. Next year I hope that more and more people will choose to attend and participate in our worship services. As always, there will be new services and lots of music – including the melodies that we know and love and new music that we will grow to love. We will also begin this month using a new prayerbook: *Mishkan Tefillah*, the new Reform Siddur.

Beit Midrash means a House of Study. We are very proud of our outstanding Religious School and the wonderful education that we are providing for our children and families. We are always looking for ways to make our school even better and to get more people involved. In this next year, I hope that more individuals will get involved in our adult education, as well. We will explore new learning opportunities for our members of all ages.

Beit Knesset means a House of Assembly. In this next year, I hope that we will have even more opportunities to come together as a congregation. It is great when we gather to celebrate holidays and life cycle moments. We need more social activities and programs – we need to encourage our members to spend more time together and to get to know each other better. We need to be there for each other. We also need to increase our social action programs, as well as our fundraising. And we need better communication to help bring people together. In this new year, we are going to take a closer look at how we communicate and place a greater emphasis on online resources, social media, and email.

We should be very proud of all that we have accomplished. And I am grateful to all of you for all that you do for our congregation. But there's always more for us to do. We should continue to look for and develop new ideas, new activities and programs, new opportunities to get involved, and new leadership. We need your help. We need your participation. And we need your financial support. By coming together and continuing to work together, we will ensure that the Tree of Life is the type of congregation of which its members are proud and excited to be a part. I know we can continue to make this a reality.

I look forward to seeing you around Temple this summer!

FROM THE RELIGIOUS SCHOOL DIRECTOR



The Wandering Jewish Gastronomer

by Risa Strauss

I woke up a few days ago around 4 a.m. I couldn't fall back to sleep when I realized I was hungry and totally in the mood for a corned beef on rye. It was difficult to deal with the fact that not only was that NOT going to happen at that hour, but unfortunately accessing a deli (like the kind I grew up with) near my abode was also not even close to being a possibility. I'm not talking about our beloved Groucho's around town (owned and started by our very own Miller family), or places such as Jason's in the Vista or McAlister's in Forest Acres. I am talking about the REAL thing. Delis with unionized wait-staff in uniforms schlepping humongous, overstuffed, fatty sandwiches from appetizing counter to table. Kind of "Big Nosh-ish," but with lots more meat. I knew that eating a sandwich like that at that time of night would mean I would have to do 10 laps around Sesqui Park, but that was a downside I was willing to deal with and, as any foodie knows, good deli is totally worth its

weight in calories!

Unable to turn my craving into reality, I began to ruminate about the origin of what we know as "deli" in America. Where did these restaurants and this culinary tradition come from? And how far would I have to travel to get to a really good deli in the South? Did my poor Jewish ancestors in Eastern Europe really eat these huge sandwiches in the *shtetl*? In restaurants? I did not know. So...in perusing the Internet, I discovered this wonderful research paper by Harry G. Levine, a professor at Queens College of the City University of New York, on the history of deli as we know it. I have taken the liberty of editing his work a bit, and I would like to share it with you.

"In their current forms, the sacred pastrami didn't exist in the old country. Pastrami and deli as we know it is a story of America and New York City. Between 1880 and 1920, more than two million Yiddish speaking Jews from Eastern Europe came to New York. The New York they came to was heavily German, like several other American cities – in 1890 New York had more immigrants born in Germany than in any other country, by far. The great wave of German immigration beginning in the 1840s thoroughly transformed American society and culture. German immigrants and their offspring contributed kindergartens, symphony orchestras, bilingual schools, successful businesses, book publishers, many newspapers, and loads of often progressive politicians and intellectuals.

"Germans also made, sold, popularized, and Americanized many foods, including a variety of sausages (or 'wieners'), beef frankfurters, sauerkraut, hamburgers, meat loaf, liverwurst, many cold cuts, noodle dishes, dill pickles, herring in cream sauce, lager beer, seltzer water, pretzels (including the big, doughy New York-style pretzels), potato salad, muenster cheese, rolls (like the Kaiser), pastries, rye bread, and pumpernickel. German immigrants also established the American institution that sold most of these items: the 'delicatessen.' Delicatessen (or *Delikatessen*) is a German word that combines 'delicious' or 'delicacies' and eating. It means either 'delicacies to eat,' or 'to eat delicious things.' In Yiddish, it means the same thing. Yiddish-speaking Jews right off the boat knew what the word meant. Some German Jews, scattered among the millions of German immigrants, kept kosher, and some of them created kosher German food businesses.

"When the Yiddish-speaking Jews first began appearing in large numbers in the 1880s, German Jews were already running kosher delicatessens. Yiddish-speaking Jews soon opened their own. At first, these early Eastern European Jewish and German kosher delicatessens differed little from the German ones, except for the absence of dairy and pork. Instead, the Jewish places had beef, lots of beef. The great pastures and prairies of America made beef plentiful and relatively inexpensive. Beef was more available in America than in any place Jews had ever lived. Because the rules of kashrut permit only certain cuts of meat, brisket – a kosher beef cut from the breast – became wildly popular with poor immigrant Jews who regarded this marbled with fat cut of meat as a great luxury and therefore a holiday food. Flavorful (because of the fat) but tough and stringy, brisket requires long, slow cooking. The famous Jewish pot roast is always made from brisket, as are Jewish corned beef and pastrami. In America, the Jews became the 'people of the brisket.' Corned beef is brisket preserved by soaking in brine (and nowadays often injecting it with brine). Americans of all kinds had made corned beef long before the Eastern European Jews showed up. But in the 1870s or 1880s, immigrant Jews in New York really did create pastrami – by flavoring and smoking corned beef. The basic recipe came from parts of Southeastern Europe (Romania, Bessarabia, Moldavia) that had been ruled by the Turks. In these 'old countries,' many people had used the technique to preserve and flavor sheep meat and pork, their most common livestock. In America, immigrant Jews applied the method wholesale to beef brisket. Jews in America probably coined the word pastrami, inspired by the word salami, adapting it from closely related Romanian, Russian, Turkish, and Armenian words (*pastrami*, *pastrami*, *pastime*, and *basturma*).

"In the first half of the 20th century, Jewish delis sprouted and spread. Almost always modest shops, delis were often narrow storefronts with a counter along one side and perhaps a few small tables. They became part of the taken-for-granted backdrop of Jewish neighborhood life in New York and other cities with many Jews. In January 1945, the *New York Times* reported that more than a thousand kosher and 'kosher-style' delicatessens were organized into a trade organization. From the 1950s on, these little delis were overwhelmed by competition from larger markets and supermarkets, and by the rise of competing foods, particularly pizza—including kosher pizza. Unfortunately, very few of the small Jewish delis still survive in New York today."

So, if you get a hankering or a craving for deli, and you have some time over the summer and you can fly or take a "road trip," the following are some Jewish/kosher-style delis in our neck of the woods (below the Mason-Dixon Line, not including Florida).
Betayavon!

***Gleibermans Kosher Deli and Supermarket:** Charlotte, North Carolina www.gleibermans.com

***Max's Delicatessen:** Birmingham, Alabama www.maxsdelionline.com

***Katz's Deli and Bar:** Houston, Texas www.ilovekatzs.com

***Nashville N.Y. Style Deli:** delis throughout Nashville, Tennessee www.nashville.com

***Goldberg's Bagels:** throughout the Atlanta, Georgia metro area www.goldbergsbagels.com

RELIGIOUS SCHOOL NEWS

A few weeks ago, Rabbi Sherman and I had the opportunity to celebrate Teacher Appreciation Shabbat with all of our teachers, parents, members of our congregation, our graduating high school seniors, and our youngest of Hebrew students in *Kitah Alef*. What a truly special feeling it was to be on the *bimah* that night!

Jewish tradition teaches us about the notion of *derech eretz*, commonly thought of as "the way of the world, or the land." *Derech eretz* is the code of proper behavior that binds us to each other as human beings and as Jews. According to *Midrash*, *derech eretz* even "precedes" the Torah. We can understand this to mean that, even before we begin to do important things like study Torah and develop an understanding of Judaism and *mitzvot*, we must abide by a code of *derech eretz* – doing what is "right."

Luckily, one of the most wonderful byproducts of a Temple Religious School is the special relationships beyond our common denominator of Judaism that connect us all to each other – whether we come from Blythewood or Orangeburg or Sumter or Chapin. And I mean relationships, not just highway connectors like I-26 or I-20 or I-77.

These relationships – ***teacher-student, parent-teacher, teacher-teacher, and student-student*** – percolate and thrive every time we step through the doors of our Temple. And these friendships that we build help to disseminate that concept of *derech eretz* throughout our congregation.

This is accomplished by our teachers because they set a personal example – a *dugma ishit* – for our students by sharing so generously their love of Judaism, their energy, enthusiasm, and TIME. TOL Religious School staff is an eclectic and devoted group of educators that vary in age and background. What we share with our students at Religious School is a treasure chest of precious traditions and teachings inherited from generations before us, beginning with Sarah and Abraham and continuing with our own

families. Hebrew/*Ivrit* is the eternal language of Judaism. We weave Hebrew throughout our curriculum at Temple to transmit to our children positive and valuable ideas about Jewish identity, God and prayer, community and personal values, and just everyday life.

Most people would agree that children learn best by example. If that is so, and I believe it is, then our children have been the main recipients of a humungous Jewish group hug, filled with tradition, Jewish knowledge, wisdom, patience, and acceptance. We are so very proud of this very generous and creative staff of teachers and assistant student teachers, or *madrichim*, and to be working with such an "ey-zeh yofi" (truly great) group of students.

The greatest honor that a student can bestow upon a teacher is to become a teacher him or herself. Rabbi Sherman and I have been lucky enough to have been "colleagues" with four of our graduating seniors this year. Each has been teaching here at TOL for four years and is a graduate of our assistant teacher program. They include Sarah Smith (a rising Capstone Scholar at USC), Elliott Chartock (Stanford University), Alyssa Greenhouse (Duke University), and Naomi Nudelman (College of Charleston). These young adults truly "get" the concept of "*le-dor va-dor*" from generation to generation. From elementary education, to becoming B'nai Mitzvah and Confirmants, and now graduating seniors that teach at this synagogue, Sarah, Elliott, Alyssa, and Naomi are truly the fruit of our *Eitz Chayim*, our Tree of Life.

The famous words of Crosby, Stills, Nash, and Young, "You, who are on the road, must have a code that you can live by" echo the *derech eretz* that we hope to aspire to at TOL. We nourish our children with a really good code for life and help them understand that there is always room for change and growth and study, and that love, appreciation, and respect are very Jewish words. *Todah Rabbah* to our parents, students, and congregants for ensuring that we have the right tools to make that happen here at Temple.

Important Religious School Dates in June

June 1: Kidz Shabbat, 6:45pm. Childcare with Kali at 7:15pm, Shabbat Services at 7:30pm
June 7: Seeds of Hope Farmer's Market, beginning at 8am
June 8: Bar Mitzvah Service of Ward Jolles, 7:30pm – *Mazal Tov* to Ward and the entire Jolles family!
June 12, 13, and 15: Play and Learn from 9:30am – 12noon
June 14: Seeds of Hope Farmer's Market, 8am
June 15: Savor Shabbat Services: 6pm, ***Shabbatizers***; 6:30 - 7:30pm Shabbat Services
June 19, 20, and 22: Play and Learn from 9:30am – 12noon
June 21: Seeds of Hope Farmer's Market, 8am
June 22: Shabbat Services, 7:30pm
June 28: Seeds of Hope Farmer's Market, 8am
June 29: Shabbat Services, 7:30pm

YOUTH NEWS

*With great pride and even greater love,
we invite you to worship as our son*

Howard Sanford Jolles

*is called to the Torah as a Bar Mitzvah
Friday, June 8, 2012
at seven thirty in the evening*

Tree of Life Congregation

Alan and Shannon Jolles

Howard Sanford Jolles

Ward is the son of Alan and Shannon Jolles and the younger brother of Kylie. A 7th grader at Orangeburg Prep, Ward enjoys playing soccer and golf, and is in his school's band and Lego club. Ward is also a member of the academic and math teams. For his Mitzvah Project, Ward volunteered for the Special Olympics.



Mazal Tov - Congratulations

to our 2012 graduating high school seniors

Elliott Chartock: Stanford University

Jonathan Friedman: Washington University

Alyssa Greenhouse: Duke University

Robbie Morris: University of South Carolina

Naomi Nudelman: College of Charleston

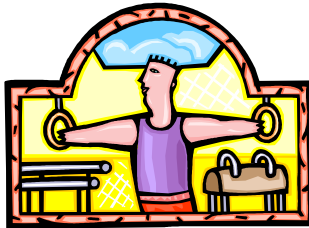
Brandon Picow: University of South Carolina

Sarah Smith: University of South Carolina

Emily Wassermann: Duke University



SUMMER HEBREW WORKOUTS



For Religious School
Students
Beginning in July!

Contact Risa at 787 2182 to schedule your time!



Tree of Life Religious School Presents Summer Play and Learn



Who: Children 2-5 years old

What: A thrice weekly preschool experience geared for inquisitive and enthusiastic children, 2-5 years of age. We will meet on **Tuesday, Wednesday, and Friday mornings**. Our aim is to provide our congregants and their friends with a small-group summer program for their children in a secure and nurturing setting while promoting cognitive learning focused on Jewish and secular content, music and arts, and increased socialization.

When: June 12, 13, 15; June 19, 20, 22 (Friday Shabbat Rocks Party) - 9:30am-12:00pm

Teachers: Risa Strauss and TOL Religious School Staff

Tuition: \$25 per session. A three-session minimum is necessary for registration. A 50% discount is available for the 2nd child. A weekly payment option is also available. Drinks, enhanced snack, and all materials included.

Call Risa at 787.2182 to register your child
or for more information!

CONFIRMATION CLASS OF 5772



WRJ / SISTERHOOD NEWS

Join the TOL WRJ Book Club in summer reading!

Thursday, July 12, 2012
The Saturday Wife by Naomi Ragen

The TOL WRJ Book Club focuses on books with a Jewish or Israeli theme.

Meetings are at 7 p.m. in the TOL Library.

There is no charge to attend and no registration – just show up!

New members are encouraged. All are welcome.

For further information please contact

Amanda Hamilton (razmanda@gmail.com)

or Ilene King (isking@earthlink.net).

BROTHERHOOD NEWS

Latke Hut

Thanks to the hard work of a number of Brotherhood members the Latke Hut was ready for its inaugural use for the Big Nosh™. The Brotherhood prepared and cooked 1,200 Latkes for the Big Nosh™. What a great way to use our new hut for the very first time. There was a lot of hard work and many long hours put in to getting the hut done and too many people to name here. We have a little work remaining to be done, adding trim and staining the hut, so your help is still needed and very much appreciated.

Brotherhood Annual Meeting

Our annual Brotherhood meeting has been postponed until after the summer. We are considering combining our annual meeting and a Thursday night Carolina football game. More details will be provided when the plans are finalized.

Brotherhood Annual Membership Drive

The Brotherhood annual membership drive will kick off in July. Please watch your mail for the membership letter.

Brotherhood Events

The Brotherhood board will be meeting over the summer to plan events and activities for the 2012-2013 year. If you have any suggestions for events or activities, please send an e-mail to David Carr at Brotherhood@tolsc.org.

BUCKS BACK

Use the ScripNow! feature of the Bucks Back Program all summer long and earn money for the Tree of Life. Order from one of the retailers listed below, pay using PrestoPay (automatic debit), receive the gift card in your inbox within minutes, and Tree of Life earns a percentage of your purchase! Already have a card that is reloadable? Reload as needed.

The next order is due June 8th. Please call Amy Scully at 497-3319 or e-mail at ascully.59@gmail.com to learn how you can participate.

ScripNow! Retailers	%	Reloadable Cards	%
Applebee's	10%	AMC Theatres	**12%
Athleta	14%	ARCO	2.5%
Banana Republic	14%	Athleta	14%
Bass Pro Shops	12%	Banana Republic	14%
Bath & Body Works	13%	Bath & Body Works	13%
Buffalo Wild Wings	8%	BP	1.5%
Build-A-Bear Workshop	8%	Buffalo Wild Wings	8%
Cabela's	11%	Chevron	2.5%
Cheesecake Factory	5%	CVS/pharmacy	6%
Chili's Grill & Bar	11%	Domino's Pizza	8%
Container Store	9%	Exxon	1.5%
CVS/pharmacy	6%	Gap	14%
Dell Computer	6%	Gymboree	13%
Domino's Pizza	8%	Hyatt Hotels	9%
Gap	14%	Hyatt Hotels	9%
Groupon.com	7%	jcpenny	5%
Hyatt Hotels	9%	Jiffy Lube	8%
iTunes®	**10%	Lowe's	**5%
jcpenny	5%	Mobil	1.5%
Kmart	4%	Old Navy	14%
Lands' End	18%	Papa John's Pizza	8%
Limited	9%	Starbucks	7%
Lowe's	5%		
Macaroni Grill	11%		
O'Charley's	13%		
Old Navy	14%		
Overstock.com	8%		
Piperlime	14%		
Pottery Barn/Pottery Barn Kids	8%		
Regal Entertainment Group	8%		
Regal Entertainment Group Premiere Ticket	15%		
Sears	6%		
Shutterfly	9%		
Staples	5%		
Starbucks	7%		
TGI Friday's	9%		
Williams-Sonoma	8%		

GREEN TEAM REPORT



BIG NOSH™ EXHIBIT

Thanks to Jessica Artz for organizing our rain garden exhibit at the Big Nosh™. Thanks also to Mary Caflisch from Clemson's Carolina Clear, who returned with the popular watershed exhibit. We are also grateful to Gill's Creek Watershed Association members Tamera Warren and Pam Greenlaw, who helped at the exhibit. Jessica and Mary deserve special thanks for working in the rain garden beforehand to make it presentable.



Remember to Reduce, Reuse, Recycle

RECYCLE CAPS PROGRAM

Some of the caps that have been left in the basket are not acceptable and may even contaminate the recycling process if we don't remove them.

ALL CAPS MUST BE RIGID POLYPROPYLENE PLASTIC.

Please do not put any metal caps or lid covers you can bend or break in the recycle basket.

CAP COLLECTION GUIDE



GOOD CAPS

Shampoo
Beverage (from plastic bottles)
Milk (cap but not the ring)
Flip top (like ketchup)
Detergent (laundry)
Jar lids (like peanut butter)
Pharmaceutical lids (prescription drugs, etc.)



BAD CAPS

Pump/Spray (like liquid soap)
Non-rigid lids (like margarine or yogurt lids)
Metal covers (like on glass beverage containers)
Paper lids (like ice cream containers)

If you're not sure it is a "good" cap, please contact the Temple office. Thanks for your help.

TOL Summer Farmer's Market begins this month!



**Seeds of Hope Farmer's Market
will once again be available in the parking lot of Tree of Life
on Thursday mornings, beginning on June 7.**

If you are a high schooler and need community service hours, then we need you! Join our loyal volunteers and farmer Louis Reid as we help support our local South Carolina farmers.

MEMBER NEWS

Mazel Tov to:

Spencer Amado & family, on his becoming a Bar Mitzvah on May 26.

Alexa Ciaremont & Elliott Echlov, on the birth of their daughter Susannah Ilene Echlov on Saturday, May 5.

Debbie & Rick Cohn, on the birth of their granddaughter Caroline Florence. The proud parents are Harris & Brooke Cohn.

Lonnie & Steven Stout, on the marriage of their son Nathan Cole Stout to Lisa Jo Rikabi on May 12.

The Confirmation Class of 5772 & their families:
 Hannah Amado, Daniel Bannister, Agnes Barroll, David Blue, Robert Bowen, Sarah Brotman, Elena Carr, Hannah Greenhouse, Brianna Rafferty, Simi Rodgers, and Bethany Smith.

Refuah Shleima

Get well wishes to TOL members recently hospitalized or at home recovering: **Sandy Mendel, Steve Merlin, Rob Scully, and Elsie Wolff.**

Condolences to:

Michael Dojc & Daniela Friedman, on the loss of his grandfather William Kemeny

Honor Roll

We salute and thank our wonderful volunteers!

Office –Joan Amado, Ann Gatton, Annette Goldstein, Sandy Hertz

Religious School Office – Joan Tucker

Hospital Patient List – Sandy Hertz

Green Team / Recycling – Carolyn Hudson

JUNE BIRTHDAYS

Faith Nudelman	June 1	Jordan Sayewitz	June 11	Bruce Becker	June 21
Shayna Bannister	June 2	Sada Maryanov	June 12	Dennis Kaplan	June 21
Dana Fisher	June 3	Lennie Mullis	June 13	Deb Tedeschi	June 22
Steven Kerner	June 3	Addison Blackmon	June 14	Janet Paul	June 25
Ward Jolles	June 4	Chris Cason	June 14	Jason Peavy	June 25
Fred Medway	June 4	Stephen Friedland	June 15	Cole Stout	June 25
Jerry Rothstein	June 4	Jillian Marcus	June 15	Carol Glass	June 26
David Blue	June 5	Maxine Garber Fisher	June 17	Darryn Russ	June 26
Patrick Contino	June 6	Nard Fleischman	June 17	Arya Novinbakht	June 27
Susannah Feinstein	June 6	Alan Jolles	June 17	Sid Sasiene	June 27
Daniel Tedeschi	June 6	Mark Magaro	June 17	Elisa Westfall	June 28
Joanne Hafter	June 8	Jan Mitchell	June 17	Lorelei Bennett	June 29
Lisa Mustard	June 8	Zachary Paul	June 17	Charlene Bernstein	June 29
James Brown	June 9	Jessica Artz	June 18	Micah Feinstein	June 29
Steve Merlin	June 9	Barbara Becker	June 18	Annabelle Mischner	June 29
Ian Picow	June 9	Michelle Bowen	June 18	Gussie Thompson	June 29
Ronni Sayewitz	June 10	Zackary Kaplan	June 18	Suzanne Abrams Roper	June 30
Renee Bland	June 11	Ira Radin	June 18		

JULY BIRTHDAYS

David Bowen	July 1	Ernie Magaro	July 10	Jeffrey Miller	July 19
Ann Diamond	July 2	Dena Wessinger	July 10	Daniel Kline	July 23
Marvin Bienstock	July 3	Melanie Baker	July 11	Brian Sorenson	July 23
Nora Feinstein	July 3	Eric Bland	July 11	Andy Tucker	July 23
Murray Politis	July 3	Kelly Stein-Marcus	July 11	Marina Volynets	July 23
Lois Gibson	July 4	Sandi Euster	July 12	Sarra Rabinovich	July 24
Barbara Rast	July 4	Pam Fleischman	July 12	Rebecca Coffman	July 25
Alvin Steingold	July 4	Naomi Farber	July 13	Nancy Reeves	July 25
Frank Baker	July 5	Bill Rast	July 13	Jhian Novinbakht	July 26
John Baker	July 5	Carol Reyner Barnett	July 14	Jennifer Williams	July 26
Emily Kerner	July 6	Thalia Birch	July 14	Terry Garber	July 27
LA Miller	July 6	Kelsey Marom	July 14	Julie Strauss	July 27
Elizabeth Prinz	July 7	Sam Grosby	July 15	Suzy Herzog	July 28
Sandy Sims	July 7	Dale Morris	July 15	Hugh Wheeler	July 28
Steven Grosby	July 8	Eric Feuerstein	July 16	Jan Barkan	July 29
Phil Savitz	July 8	Bob Blenner	July 18	Bailey Koller Schmidt	July 29
Marjorie Cooper	July 9	Sagan Cantor	July 18	Kim Bannister	July 30
Howie Weiss	July 9	Abby Magaro	July 18	Rich Mellitz	July 30
David Blackmon	July 10	Lisa Wheeler	July 18	David Reddy	July 31
				Sam Weiss	July 31

JUNE & JULY ANNIVERSARIES

Rachel & Jason Peavy	June 2	Yuliana & Arthur Iskhakov	June 16	Edith & Marvin Kline	July 1
Melanie & Frank Baker	June 6	Nancy & Richard Wassermann	June 17	Lennie & Charles Mullis	July 8
Diane & Sheldon Kall	June 7	Sarra & Feliks Rabinovich	June 18	Anne & Alan Reyner	July 8
Ann & Marc Posner	June 7	Adele & Herman Salzberg	June 19	Sandy & Bill Sims	July 10
Walton & Jeff Selig	June 7	Lonnie & Steven Stout	June 20	Mindy & Andy Tucker	July 13
Rabbi Leah Doberne-Schor & Adam Schor	June 9	Sara & Andy Thide	June 20	Maryann & Lewis Lapine	July 15
Barb & Art Levy	June 10	Maxine & Rayton Fisher	June 22	Alexa Claremont	
Jennifer & Hyman Rubin, III	June 10	Donna & Ernie Magaro	June 22	& Elliot Echlov	July 16
Julie & Ned Strauss	June 10	Nina & Patrick Contino	June 23	Elizabeth & James Brown	July 17
Debbie & Rick Cohn	June 12	Jan & Phil Savitz	June 26	Jennifer & Lee Williams	July 19
Kelsey & Eric Marom	June 13	Kim & Sam Moses	June 29	Eleanor Stein	
Jane & Sam Friedman	June 14	Carole & Jerry Rothstein	June 30	& Brian Glavey	July 22
				Jan & Gary Mitchell	July 29

We truly appreciated all your thoughts & prayers during the recent loss of my mother Helen Mendel.

Thank you,
Rick Mendel & family

ATTENTION:

If anyone is replacing a refrigerator in good working order, please consider donating it to Temple for the Big Nosh™.

ONEG SHABBAT HOSTS

May 11 – Chair: Annette Goldstein, Gary & Janis Mitchell, Michael & Dale Morris, Jeffrey & Lorraine Moses, Sam & Kim Moses, Lennie & Charles Mullis, Allan & Cheryl Nail

June 1 – Chair: Steve Savitz, Phil & Jan Savitz, Steve & Jennifer Savitz, Keith & Ronni Sayewitz, Sara Schwebel, Rob & Amy Scully, Jeff & Walton Selig

June 8 – Alan & Shannon Jolles, in honor of Ward's Bar Mitzvah

June 15 – Chair: Julie Strauss, David & Lora Stein, Eleanor Stein & Brian Glavey, Jack & Linda Sterne, Jon & Debra Stomblor, Steven & Lonnie Stout, Ned & Julie Strauss

June 22 – Chair: Deb Tedeschi, David & Debra Tedeschi, Lance & Barri Thompson, Andy & Mindy Tucker, Joan Tucker, Boris & Jane Veytskin, Andy Volin

June 29 – Chair: Yuliana Zulanova, Abe & Lois Wandersman, Richard & Nancy Wassermann, Todd & Heather Weiss, Pamela Weiss & Murray Mitchell, Sharon Weissman & David Reddy, James & Dena Wessinger

July 6 – Chair: Amanda Hamilton, Brad Smith & Cheri Shapiro, Howard & Karyn Sheftman, Vladimir & Tat'Yana Shtessel, Jeffrey & Linda Silver, Bradford & Jennifer Smith, Steven & Bethany Sorenson

July 13 – Chair: Ilene King, Hugh & Sara Wheeler, Travis & Lisa Wheeler, Lee & Jennifer Williams, Shawn Youngstedt & Teri Berez, Marcia & Geordie Zug, Allan & Linda Ackerman

July 20 – Chair: Cheryl Nail, Cheri & Allen Alexander, Joan Amado, Jonathan & Jessica Artz, Keith Babcock & Jacquelyn Dickman-Babcock, John & Marcie Baker, Melanie & Frank Baker

July 27 – Chair: Jessica Coppin, David & Kim Bannister, Craig & Marilyn Barkan, Jan & Joanne Barkan, Carol Reyner Barnett, Leeds & Kate Barroll, Karen & Paul Beattie

*Note: If you are unable to bake or purchase Oneg Shabbat refreshments, you may donate \$20.00. Homemade goods are always preferable. Checks need to be sent to the Temple office **two weeks prior to your Oneg Shabbat date.** Thank you for your support.*

WRJ SHABBAT SERVICE REPS

June 1 – Nancy Cartiff
June 8 – Annette Goldstein
June 15 – Debbie Greenhouse
June 22 – Daniela Friedman
June 29 – Lisa Helfer

July 6 – Gaynell Gavin
July 13 – Eva Bernath
July 20 – Linda Ackerman
July 27 – Susan Brill

YAHREZEITS

June 1 – George Nathanson, Lela M. Kuntz, Ora Imogene Shivley, Izrael Anbinder, Mortimer A. Cohen, August Kohn, Sr.*, David Hein, Mary Magaro, Maie Park, Nathan Sheftman*, Tillie B. Fleischman*, Edmund A. “Buster” Nachlinger, Gail Reiser, Louis Silber*, Meyer Zellman, Julian Brown, Neil Cartiff*, Joe Goldstein*, Freda Kornblut

June 8 – David Schwartz*, Harriet “Hesh” Volin, Ruth Becker, Henry Geers, Fanny Kronrad*, Andrew Schwebel, Harold Starr*, Ben Swartz, Gerald Tucker*, Janet Barkan, Donald J. Bedford*, Nathaniel Gabriel, Julius Kronrad*, Jack Silk, Samuel Weinberg, Marcelle Serfaty Rodgers, Isaac Spector*, Betty Donen*, Simon Polinsky, Max Revelise*, Richard Wayburn II*

June 15 – Joseph Frank Cohen*, Shirley Hertz*, Abdollah Novinbakht, Alan Baker, Esther K. Baker*, Frances S. Benenson*, Louis Birch*, George Bor, Elizabeth Carlson, Sheppard Morris, Dora Bornstein, Herbert Bass*, Mamie Burger*, Richard Eugene Halford, Sally Reisman, Robert Hurwitz, Nora Helman Robinson*, Ivan Miller, Rita Trantham, Ruth Werblum Love*

June 22 – Morris Leon Garber, Iloean Shultz, Carolyn Everett, Lynn Fleischman Milman*, Joseph Sorenson, Harris Fried, George Goldberg, Blair Rivers, Anne Cartiff, Rachel Davidson, Robert N. Love*, Joseph Rubenstein, George Altman, Alvin M. Block*, Helen Kasiniak, Ida Korash, Florence Plotkin, Kittie Simmons*, Joseph Welsh Strauss*

June 29 – Fay Reyner Aroneck*, Gustav Carlson, Jules W. Lindau, IV*, Ruth B. Love*, Michelle Newton*, Gail Riley, Rose Stein*, Jerome Blau*, Betty Conway*, Dorothy Ritter, Ronnie Compton, Harold H. Eschen, Sylvia Gottlieb*, Mitchell Jay Paul Troy, Mollie Q. Vigodsky*, Ray Pearlstine Wolff*, Jadzia Stern, Eva Strasburger*, Valeriy Volynets

July 6 – Henry Bogatin, Khaya Dobrushkina, Eva Sasiene, Clara Goldsmith, Mary Raphael Helman*, Jerry King*, Edward Charles Lilly, Isaac Quatinetz*, Nell Sharitz, Jack Bazerman*, Hyman Cohen, Jack Rosenberg, Betty Loeb*, Bertha K. Nowitz*, Fannie Reyner*, Rose Blumberg*, Joyce Parks, Lewis E. Littmann, Charlotte Rosin, Isadore Schreiber*

July 13 – Lawrence L. Burger*, Bella Circus*, Rose Madoff, Jules Seideman*, Russell Hertz*, Marilyn Freed*, Morris Kuntz, Sophie Troyansky, Alan Berry, Edward Brenner, Nat Love, Rebecca Friedman*

July 20 – Ray Benator Fisch*, Jennie Baker Ravdin*, Albert A. Salomon*, Lillian Rochelle Troy*, Irene Goldsmith Kohn*, Donald Koon, Rose Alion Goldman, Bernard Klein, Samuel Monroe Wittenberg*, Lina Strasburger*, Sara Savitz Linett*, Henry Bedinger

July 27 – William Goodwin, Samuel Milecofsky, Harold Samuel Cantor, Bessie L. Euster*, Herbert Racoff, Joyce Rosenwald, Sarah Stern*, Ruth Arnold, Murray Irwin Linett*, Esther Duni*, John Hertz*

**name memorialized by a plaque in the sanctuary*

BIMAH FLOWERS

May 4

Allen & Cheri Alexander, in memory of Jason Oxhorn
Marvin & Gail Bienstock, in memory of Samuel Bienstock
Bessie Garber, in memory of Rebecca Brenner
Harry Gindman, in memory of Fanny Gindman
Karen & Mark Goldenfield, in memory of Wilfred Atran
Linda, Steven, Emily, & Jared Kerner, in memory of Jerry Cooper
Jennifer & Hans Mykytyn and Matthew Train, in memory of Leo David Goldblatt
Arline & Gerald Polinsky, in memory of Helen Rudman Polinsky
The Reyner family, in memory of Sidney Elfman Reyner

May 11

Barry & Eleanor Bornstein, in memory of Leonard Bornstein
Elaine A. Cypres, in memory of Anthony E. Cypres
Bessie Garber, in memory of Tillie M. Garber
Doris Garber, in memory of Tillie M. Garber
Detty & Gary Markham, in memory of Joan Markham Siebert
Jewel Rotholz, in memory of Esther Rotholz
Jeannie & Hyman Rubin, Jr., in memory of Rose Rubnick Rubin
Svetlana Tsukhay & family, in memory of Sholim Perchonok

May 18

Family of Max Dickman, in memory of Max Dickman
Belle S. Fields, in memory of Jacob Serbin
Judy & Fred Thibault and Paul Fischman, in memory of Maurice Fischman
Sam & Jane Friedman, in memory of John Breyer
Charles Geffen & Gaynell Gavin, in memory of Albert Haegele
Art & Barb Levy and family, in memory of Fred Levy
Nathan Picow, in memory of Lilyan Picow
Revera Wayburn, in memory of David Kahn

May 25

The Amado family, in honor of Spencer's Bar Mitzvah
Nina Ellins Contino, in memory of Corinne Ellins
Benjamin, Jean, & Jack Ginsberg, in memory of Simon Harry Ginsberg
Phyllis Houghton, in memory of Sam Bogo
Rob & Amy Scully, in memory of Sam Posner

CONTRIBUTIONS

We gratefully acknowledge the following thoughtful donations:

Building Fund

Sandra & Gerald Euster, in memory of Marguerite Brill

Endowment Fund

Steven & Sally Langer, in memory of Louise Hill

Steven & Sally Langer, in memory of Helen Mendel

Steven & Sally Langer, in memory of Marguerite Brill

Rob & Amy Scully, in memory of Louise Hill

Ned & Julie Strauss, in memory of Marguerite Brill

Ned & Julie Strauss, in memory of Dan Davis

General Fund

Carla Davis, in memory of Dan Davis

Meri Gergel, in memory of Marguerite Brill

Meri Gergel, Mazel Tov to John Baker being named
the 2011 United Way Humanitarian of the Year

Connie & Leon Ginsberg, in memory of Marguerite Brill

Sherri & Bruce Greenberg, in memory of Dr. Daniel Davis

Dr. & Mrs. William A. Johnson, in memory of
Marguerite Brill

Dr. & Mrs. Ashby M. Jordan, in memory of Marguerite Brill

Eleanor & Joel Levy, in memory of Helen Mendel

Eleanor & Joel Levy, get well wishes to Elsie Wolff

Ron & Beth Maris, in memory of Dan Davis

Faye Miller, in memory of Dan Davis

Lorraine & Jeff Moses, in loving memory of
Marguerite Brill

Arlene & Ben Pearlstine, in memory of Dan Davis

Joye Richardson & Sherry Austin-Crosby, in memory of
Marguerite Brill

Hyman & Jeannie Rubin, in memory of Dan Davis

Hyman & Jeannie Rubin, in memory of Louis Hill

Fred & Ellen Seidenberg, in memory of Marguerite Brill

Fred & Ellen Seidenberg, in memory of

Florette Reyner Shrago

Mr. & Mrs. William F. Tapp, Jr., in memory of Leon Garber

Prayer Book

Rick & Debbie Cohn, in memory of Geraldine &
Myron Cohn

Rick & Debbie Cohn, in memory of Honey &
Harry Halpern

Rick & Debbie Cohn, in memory of Henry Bogatin, Jr

Rick & Debbie Cohn, in honor of Regina Bogatin

Rick & Debbie Cohn, in memory of Henry & Gerry Bogatin

Rick & Debbie Cohn, in honor of Rabbi Sherman's
40th birthday

Rob & Amy Scully, Happy 40th Birthday to Rabbi Sherman

Lyanne & Barton Wassermann, in honor of the

Bat Mitzvah of their granddaughter

Madeline Sara Wassermann

Rabbi's Discretionary Fund

Ned & Betty Adams, in memory of Leon Garber

Helga & Steve Cohen, in loving memory of Dan Davis

Gerald Euster, in appreciation

Jack & Rick Mendel, in memory of our mother

Helen Mendel

Aileen Sunshine, in memory of Marguerite Brill

David & Deb Tedeschi, in honor of

Rabbi Sherman's birthday

Religious School Fund

Sandra & Ed Poliakoff, in memory of Dan Davis

Sandra & Ed Poliakoff, in memory of Marguerite Brill

Sisterhood Courtesy Fund

Barry & Eleanor Bornstein, in loving memory of Louise Hill

Richard & Myrna Cohen, in loving memory of Louise Hill

Beth Maris, in loving memory of Muriel Masur

Beth Maris, in loving memory of Blanche Glaser

Beth Maris, in loving memory of Louise Hill

Rick & Jack Mendel, in memory of Helen Mendel

Sisterhood Evelyn & Dan Daniel Fund

Susan Altman, in loving memory of Marc Sunshine

Susan Altman, in loving memory of Eleanor Hack

Susan Altman, in loving memory of Roy Mitchell

Youth Activities Fund

Eva Bernath, in appreciation

Josh & Melinda Eagle, in appreciation

Shelley & Rob Kriegshaber, in memory of Marguerite Brill

Rob & Amy Scully, in memory of Leon Garber

Rob & Amy Scully, in memory of Dan Davis

Rob & Amy Scully, in memory of Helen Mendel

Rob & Amy Scully, in memory of Marguerite Brill

Rob & Amy Scully, Mazel Tov to the Confirmation Class
of 5772 and their parents

Jonathan Train Youth Group Endowment Fund

Steven & Sally Langer, in memory of Blanche Glaser

Hyman & Jeannie Rubin, in memory of Blanche Glaser

Rob & Amy Scully, in memory of Blanche Glaser

Susie & Scrappy Stark, in memory of Blanche Glaser

Ned & Julie Strauss, in memory of Blanche Glaser

Aileen Sunshine, in memory of Blanche Glaser

June 2012



Sun	Mon	Tue	Wed	Thu	Fri	Sat
					1 6:45pm KIDZ Shabbat 7:30pm Shabbat Service	2 10:00am Shabbat Morning Service & Torah Study
3	4	5	6	7 8:00am Farmer's Market	8 7:30pm Howard Jolles Bar Mitzvah	9
10	11	12 9:30am-12:00pm Play & Learn	13 9:30am-12:00pm Play & Learn	14 8:00am Farmer's Market	15 9:30am-12:00pm Play & Learn 6:00pm Kabbalat Shabbat 6:30pm Casual Shabbat Evening Service	16
17	18	19 9:30am-12:00pm Play & Learn	20 9:30am-12:00pm Play & Learn	21 8:00am Farmer's Market	22 9:30am-12:00pm Play & Learn 7:30pm Shabbat Service	23
24	25	26	27	28 8:00am Farmer's Market	29 7:30pm Shabbat Service	30

July 2012



Sun	Mon	Tue	Wed	Thu	Fri	Sat
1	2	3	4 Independence Day (Temple Closed)	5 8:00am Farmer's Market	6 7:30pm Shabbat Service	7
8	9	10	11 6:30pm Executive Board 7:30pm Board of Directors	12 8:00am Farmer's Market	13 7:30pm Shabbat Service	14 10:00am Shabbat Morning Service & Torah Study
15	16	17	18	19 8:00am Farmer's Market	20 6:00pm Kabbalat Shabbat 6:30pm Casual Shabbat Evening Service	21
22	23	24	25	26 8:00am Farmer's Market	27 7:30pm Shabbat Service	28
29	30	31	1	2 8:00am Farmer's Market	3 7:30pm Shabbat Service	4



Tree of Life Congregation
6719 North Trenholm Road
Columbia, SC 29206

ADDRESS SERVICE REQUESTED

NON-PROFIT ORG.
U.S. POSTAGE
PAID
COLUMBIA, SC
PERMIT #121

TREE OF LIFE CONGREGATION

Established 1896
6719 North Trenholm Road * Columbia, SC 29206
Office: (803) 787-2182 * Fax (803) 787-0309
Website: www.tolsc.org
Email: info@tolsc.org
Office Hours: Monday - Thursday 9:00 am - 5:00 pm
Friday 9:00 am - 4:00 pm
Closed daily 12 noon - 1:00 pm

RABBI Daniel M. Sherman
rabbisherman@tolsc.org

RABBI EMERITUS Sanford T. Marcus, D.D.

Risa Strauss, RELIGIOUS SCHOOL DIRECTOR
risa@tolsc.org

OFFICERS

President	Stephen Savitz
First Vice President	Rick Cohn
Second Vice President	Lisa Helfer
Secretary	
Treasurer	Paul Westfall
Finance Chair	Debra Tedeschi
Immediate Past President	Jeff Selig

BOARD MEMBERS

David Carr	Kim Moses
Laney Cohen	Arline Polinsky
Richard Cohen	Marc Posner
Annette Goldstein	Marc Rapport
Bruce Greenberg	Amy Scully
Deborah Greenhouse	Brad Smith
Donna Magaro	Julie Strauss
	G. Todd Weiss

LIFETIME BOARD MEMBERS

Bernard Fleischman, Jr.
Stephen Savitz
Howard Weiss



COMMITTEE CHAIRS

Endowment	Ned Strauss
Finance	Debra Tedeschi
Fundraising	G. Todd Weiss
House & Grounds	Brad Smith
Membership	Annette Goldstein
Outreach	Debra Tedeschi
Religious School Board	Kim Moses
Ritual	Richard Cohen
Social Action	Ilene King

AFFILIATES

Brotherhood President	David Carr
Sisterhood President	Cheri Alexander
COFTY President	Naomi Nudelman

TOL NEWSLETTER

Designer/Editor	Cheryl Nail
Proofreader	Marc Rapport

TEMPLE STAFF

Office Manager	Linda Frederico
Custodian	Demitris Gilmore

TEMPLE MUSICIANS

Music Director	Sharon Witherell
Director Emeritus	Jackie McNeil