

TREE OF LIFE CONGREGATION

COLUMBIA, SOUTH CAROLINA

**“KOL T.O.L.” – THE “VOICE OF THE TREE OF LIFE”
MONTHLY NEWSLETTER**

FEBRUARY 2012 – SHEVAT - ADAR, 5772

FEBRUARY WORSHIP SERVICES

Friday, Feb. 3 Shabbat Shirah

6:45 p.m. KIDZ Shabbat
7:30 p.m. Shabbat Eve Service*
Torah Reading: *Beshallah, Ex. 13:17 - 17:16*

Friday, Feb. 10 Come celebrate Tu B'Shevat

7:00 p.m. Service and Seder led by *Kitah Gimmel* (3rd level Hebrew) students
Torah Reading: *Yitro, Ex. 18:1 – 20:23*

Saturday, Feb. 11

10:00 a.m. Shabbat Morning Service
& Torah Study

Friday, Feb. 17

7:30 p.m. Shabbat Eve Service
Torah Reading: *Mishpatim, Ex. 21:1 – 24:18*

Friday, Feb. 24 In Memory of Debbie Friedman

7:30 p.m. Special Shabbat Eve Service
featuring the music of
Debbie Friedman, who died one year
ago at this time
Torah Reading: *Terumah, Ex. 25:1 – 27:19*

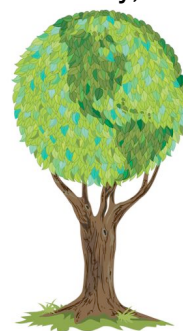
Friday, Mar. 2

6:00 p.m. KIDZ Shabbat Dinner & Service
(note earlier start time)
7:30 p.m. Shabbat Eve Service*
Torah Reading: *Tetzaveh, Ex. 27:20 – 30:10*

* Childcare is available for services.

HAPPY TU B'SHEVAT

15 Shevat
Wednesday, Feb. 8



NEW ADULT ED CLASSES
begin on Wednesday, Feb. 15

DON'T FORGET:
TOL WINE TASTING
Saturday, Feb. 18

INSIDE THIS ISSUE

<i>Temple News</i>	2
<i>From the Rabbi</i>	3
<i>Religious School</i>	4-5
<i>Sisterhood & Green Team</i>	6
<i>Brotherhood & Member News</i>	7
<i>Member News cont. & Contributions</i>	8
<i>Community News</i>	9
<i>Yahrzeits</i>	10
<i>Calendar</i>	11

TEMPLE NEWS

TOL BEIT MIDRASH FOR LIFELONG JEWISH LEARNING

ADULT EDUCATION CLASSES – Winter 5772/2012

Wednesday evenings: February 15, 22, & 29

5:00 – 5:55 p.m.

BEGINNING HEBREW FOR ADULTS with Risa Strauss

This class, a continuation of adult Hebrew from November and January, began with the basics of reading and understanding Hebrew. Ask Risa if this is the right class for you.

6:00 – 6:55 p.m.

CONTINUING HEBREW with Risa Strauss

Using a conversational Hebrew text as well as *Aleph Isn't Enough*, we will continue to improve our conversation and prayer skills, grow our vocabulary, and develop a better understanding of the language. This is the second half of last Fall's course.

6:00 – 6:55 p.m.

THE WORLD BEYOND: JEWISH VIEWS

OF THE AFTERLIFE with Rabbi Sanford Marcus

In this course, we will discuss Jewish views of the afterlife. The focus of the first class will be what the Tanakh (Hebrew Bible) says about what happens after we die. In the second class, the focus will switch to the era of the Talmud. Finally, in week 3, we will discuss the writings of the medieval and modern philosophers. Reference lists and course outlines will be provided to all registrants.

7:00 – 7:55 p.m.

REAL HOUSEWIVES OF THE BIBLE with Rabbi Leah Doberne-Schor

What was it really like to be a Jewish woman in the Bible? Were women *always* subservient? What sort of power did they have, and how did they wield it? How did they shape the future of the Jewish people? Come learn about some well-known (and some lesser-known) women in the Bible.

8:05 – 9:00 p.m.

INTRODUCTION TO JUDAISM with Rabbi Sherman

Introduction to Judaism provides an opportunity to learn about the Jewish religion, traditions and practices, holidays and life-cycle ceremonies, culture and history, as well as basic values and beliefs. This course is open to everyone: for those who feel they have forgotten much of what they studied in religious school years ago, for those who grew up Jewish but have never had the opportunity to study their religion as adults, and for those who are interested in becoming Jewish or simply want to know what Judaism is all about. This course began in the Fall and will continue through the Spring. New students are welcome.

Our next Bucks Back order deadline is Sunday, February 5. Orders should be available for pick-up by Friday, Feb. 10.

**Tree of Life Invites You
To a Special Evening of FUN, FOOD, & WINE**

Join us for TOL's 2nd Annual Wine Tasting

Gregg Park Clubhouse

71 Gregg Parkway

Saturday, February 18, 2012

7PM – 10 PM



**Wines for Tasting & Sale
Heavy Hors d'oeuvres
Silent Auction**

\$30 per person

Send your check to TOL

or pay online at www.tolsc.org

to reserve your place by February 13th

(Your payment is your reservation.)

Mark Your Calendars for ...

PURIM 5772

Wednesday, March 7

6:00 p.m. Dinner

6:45 p.m. Purim Service & Megillah Reading for all ages

7:30 p.m. Adult Purim Party at Beth Shalom Synagogue

Come join us for the most fun night of the Jewish year! We will begin with dinner, followed by our joyous Purim Evening Service, which will include the reading of the Megillah (Scroll of Esther) and a Purim Shpiel. You won't want to miss out! Afterwards, we will join with Beth Shalom Synagogue for an adult Purim party (alcohol will be served – childcare will be provided).

Our joint Purim Carnival Extravaganza with Beth Shalom Synagogue will be held at TOL during Religious School on Sunday, March 11. Come in costume and come ready for fun!



Our Third Jewish Cultural Festival, The Big Nosh, is planned for Sunday, April 22nd (11am - 7pm)

THE BIG NOSH will include all of the wonderful foods and camaraderie from past years with the Jewish Food Festival PLUS great indoor and outdoor entertainment and fun. There will be tents, music and dancing, vendors, kids' games, and Jewish education. We are also promoting the Harvest Hope Food Bank and "keeping green" with the festival. Watch for more information in future emails and community publications.

This is a huge (and much needed) fundraising opportunity for Tree of Life, and **we need your support to be successful**. We will need volunteers for the day of the festival and several days leading up to the event. We need help in preparing and serving food and drink, helping with the set-up, selling tickets, etc. You all were wonderful last year and we are counting on you again for this year. We will need food preparers and servers, entertainment assistance, ambassadors, set-up, and clean-up assistance. Lisa Helfer will be coordinating volunteers for the actual event. Lisa Kaplan will be coordinating volunteers to cook. Amy Scully, Jule Strauss and Walton Selig will be coordinating volunteers to bake sweets. Risa Strauss will be coordinating volunteers for entertainment and demonstrations.

**Thank you in advance for helping us to make our third annual Big Nosh a huge success.
We cannot do this without your help!**

FROM THE RABBI



Special Opportunities this Month

by Rabbi Daniel M. Sherman

I want to begin by thanking everyone who came to last month's special congregational meeting. I am grateful for and honored by the support I received and am excited about the opportunity to continue to serve the Tree of Life Congregation as your rabbi. We have accomplished much over the past five and a half years, and we should be proud of where we are. I look forward to our future together as we continue to grow and strive to meet the needs of all of our TOL members and community. Thank you for your trust and support.

I want to highlight some special services that will be happening this month at Temple. Friday night February 3 is the beginning of *Shabbat Shirah* – the “Sabbath of Song.” This special Shabbat takes its name from our Torah portion, which includes *Shirat HaYam* – “the Song of the Sea” – the words our ancestors sang as they praised and thanked God after successfully crossing the Red Sea on their way to freedom. In honor of *Shabbat Shirah*, our festive service will include not only the recitation of *Shirat HaYam*, but also some new music that Sharon Witherell and I will introduce.

Tu B'Shevat, the “Birthday of the Trees” on the 15th day of the month of Shevat, occurs this year on Wednesday, Feb. 8. Come join me that day for a special “Lunch-n-Learn” session at the Katie & Irwin Kahn Jewish Community Center at 12:15pm. Our topic will be Judaism and the environment. We will celebrate Tu B'Shevat at Temple with a special service on Friday, Feb. 10 beginning at 7:00pm (please note the earlier time). *Kitah Gimmel* (our 3rd level Hebrew students) will help to lead the service and special Tu B'Shevat seder in the Reyner Family Social Hall. The seder will include the drinking of four cups of juice and the eating of various fruits and nuts, as we thank God for trees and all of nature. Last year's Tu B'Shevat seder was enthusiastically received and was also when TOL was presented with its Columbia Green Congregation award.

On Friday, Feb. 24 we will hold a special service to remember the life, work, and music of Debbie Friedman, *z'l* (*zichrona livracha* – may her memory be a blessing). It is hard to believe that it has already been a year since Debbie Friedman died. She was the most prolific and important Jewish singer and songwriter of her time. She helped to transform synagogue music with a sound all her own. Each week our service includes many Debbie Friedman melodies and songs. On this evening, all of our music will be dedicated to her memory. Please plan on joining us at Temple and singing along as we remember Debbie Friedman.

I also want to point out our Adult Education offerings this month. Risa Strauss will continue to teach her two adult Hebrew classes. Please discuss with her which class is right for you. I am thrilled that Rabbi Marcus and Rabbi Leah Doberne-Schor will both be teaching new classes at Temple this month. Each class will go for three weeks (Feb. 15, 22, & 29). Rabbi Marcus will be teaching about “The World Beyond: Jewish Views of the Afterlife.” His class will meet from 6 – 6:55 p.m. Rabbi Doberne-Schor will be teaching “Real Housewives of the Bible” from 7 – 7:55 p.m. Rabbi Doberne-Schor has been doing wonderful work with Jewish students at USC this year and was recently named a registered religious worker at USC. I will continue to teach our “Introduction to Judaism” class at 8:00pm.

One more February highlight to point out: the second annual TOL Wine Tasting and social event on Saturday, Feb. 18. More than just a fundraiser, this is a great opportunity to spend a fun Saturday evening getting to know your fellow congregants better. Please reserve your spot as soon as possible, as space is limited. And don't forget to sign up for the Community Mitzvah Day on Sunday, Feb. 12. The event is sponsored by the Columbia Jewish Federation as a way to bring together the entire Columbia Jewish Community for a day dedicated to *tikkun olam* – the repair of our broken world. Please plan on participating.

FROM THE RELIGIOUS SCHOOL DIRECTOR



Connecting with Our Roots – Planting Seeds for the Future

by Risa Strauss

The Hebrew word for “before” is *kodem*, and the Hebrew word for “forward” is *kadima*. Both come from the same Hebrew root: *kuf*, *dalet*, and *mem*. The connection is clear. You can’t know where you are going unless you know where you come from. This month our TOL households will have a variety of opportunities to examine their “roots,” as well as their connections to Judaism and to Israel. One opportunity to connect to Judaism will be through our adult education classes that are being offered during the month of February. Another great way to connect to our roots, Israel, and environmental issues will be through our celebration of

Tu B'Shevat, the “Holiday of the Trees,” on February 10 with our third level (*Kitah Gimmel*) Hebrew class. On Sunday, February 12, we will join together in “Mitzvah Day,” a *tikkun olam* endeavor that the entire Jewish community can participate in to help make the world a better place. And on Saturday evening, February 18, our congregation will be hosting our annual wine tasting event with “heavy appetizers” at the Gregg Park Clubhouse from 7 – 10 pm.

Now, you may wonder how a wine tasting event appears in this list of “connecting Jewishly” and discovering your “roots” activities. Well, first of all, it’s fun to get together with your friends from Temple. And secondly, wine is made from grapes – and on *Tu B'Shevat* it is a tradition to eat seven types of fruit and grains that grow in Israel: barley, figs, dates, wheat, olives, pomegranates, and grapes. One of the first kosher wineries in the United States is named “*Kedem*,” denoting both something “old” and traditional, as well as being foremost and prominent. Today *Kedem* wines, with factories in upstate New York, are leaders in the kosher wine and beverage industry.

No pun intended, but without a doubt the most universal way to make a connection with your Jewish roots and Israel is during *Tu B'Shevat*, the Holiday of the Trees. Since no mention of a tree holiday is found in the Bible, we look to the Talmud for our first introduction to the concept of *Tu B'Shevat*. The 15th day of the Jewish month of *Shevat* (the Hebrew letters *tet* and *vav* numerically equal 15) was designated as *Tu B'Shevat* by Rabbi Hillel in the first century CE. Although *Tu B'Shevat*, also known as *Rosh HaShanah Lellanot* (the New Year of the Trees), is considered a minor festival, its significance is threefold. Agriculturally and historically, the festival arose from the need to indicate a particular day which would mark the beginning of a new year for a fruit crop. Tithing calculations were based upon this date and were very important in an agricultural-based economy. From a religious perspective, we read in the Torah that once there was land, seed-bearing plants and fruit trees were the first

things that God put on the earth. And, throughout Jewish history, trees and the bountiful gifts they provide have prompted many a Rabbinic sage like Rabbi *Yochanan ben Zakkai*, a disciple of Rabbi Hillel, to write: “If you are in the act of planting a tree and you are told, Behold the Messiah is coming! plant your sapling first and only then go and greet the Messiah.”

In Judaism getting in touch with your roots is easy, because trees represent the essence of life – both because they are alive and because they sustain life by providing the food, shelter, shade, fuel, and oxygen that humans and animals need to survive. Many people like to plant trees, purchased through the Jewish National Fund (JNF), in Israel during *Tu B'Shevat*. The JNF provides many educational materials and programs to Jewish schools around the world all year long. Their program highlights Israel’s role as a global environmental leader, as well as emphasizing that every tree planted through the JNF helps support Israel’s ecological needs.

Actively celebrating *Tu B'Shevat* helps us to become more aware and appreciative of the wonders of Creation, so that we and our children and our children’s children can enjoy a healthy world. Trees are rooted in the ground, and the earth holds the layers of our diverse Jewish past. All of these exciting February experiences will help to plant the seeds of our future. We invite you to join us!

RELIGIOUS SCHOOL NEWS

It is true that sometimes days can become so stressful that we often do not take the time to “kick back and smell the roses.” Well, during the month of February, TOL Religious School is going to do just that! Saul Tchernikovsky, a Russian poet and physician who immigrated to Israel in the early 20th century, wrote: “Here on Earth too God lives, not in Heaven alone. A beautiful tree, a newly plowed field, in them you will find God’s likeness.” How God is present in the world around us, in our lives, and in the things we do will be our school’s focus during the coming months. We are looking forward to a February packed with programming for all ages!

As always, a *todah rabah* goes out to all of our parents, teachers, Religious School Board, Brotherhood, and Sisterhood for their efforts, donated time, and creativity. Your support helps maintain and sustain our Religious School.

***Our Community-wide Mitzvah Day will be held on Sunday, February 12. We will be having a “late-start” for Religious School. Meet at 10am at TOL or at 10:30am at the JCC. We will have a joint assembly with Beth Shalom and then “sign-in” for Mitzvah Day, have a great lunch, and then head on out to our projects. For more info, go to the TOL website!

Important Religious School Dates in the Month of February

2/03: Kidz Shabbat at 6:45pm with special Shabbat program from PJ Library®. Childcare with Kali at 7:15pm, followed by Shabbat Services at 7:30pm.

2/05: RS, 9am with special arts & crafts and music for Tu B'Shevat; Special PJ Library® Tree Tumblers Tu B'Shevat program at 10:30am; TYG Bagel Breakfast Fundraiser from 8:45am.

2/08: Adult Beginning Hebrew, 5pm; Intermediate Hebrew, 5:45pm; Modern Israel, 6:30pm.

2/10: Tu B'Shevat Seder and Kitah Gimel Shabbat Service, 7-9pm! Join the whole congregation for a wonderful Shabbat service and celebration of the trees!

2/12: Mitzvah Day! Religious School students and families meet at TOL at 10am or at 10:30am at the JCC. More info on the TOL website.

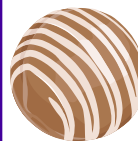
2/19: No Religious School - February Break.

2/26: RS, 9am; Chai-School, Binah Book Club.

Support TOL Religious School's Annual Fundraiser Bartons' Miss Chocolate Passover Candy Sale!

Look for your packet in your child's book bag.
Or, pick one up in the lobby.

**Starts January 15, 2012
Ends March 4, 2012**



Use an order form or go online at:
www.misschocolate.com
School Code: 704479
Mmmm...
delicious Passover delicacies!

Etrog Jelly: From a sight on Sukkot to a taste on Tu B'Shevat! From teacher, Lora Stein

Collect as many etrogim as you can for this delicious post-Sukkot recipe. Perfect to use on Tu B'Shevat!



Just as an etrog has taste and fragrance, so Israel contains those who have Torah learning and good deeds. -Vayikra Rabbah 30:12

What can you do with an etrog after Sukkot? Cook up some etrog jelly!

After the holiday is over and *etrogim* are no longer needed for the four species, ask friends, relatives, and synagogue members to contribute their *etrogim* to the jelly-making cause. You can prepare as much etrog jelly as your biggest pot will hold water. This jelly freezes well. Consider tasting some now and freezing the rest to enjoy on Tu B'Shevat. (which we will do on 2/10).

Ingredients:

etrogim * ¾ cup sugar per etrog * lots of water * lots of time

Recipe:

1. Wash, slice, and remove the seeds from the *etrogim*. Chop what's left—skin and all—into small pieces.
2. Add 6 cups of water per etrog and refrigerate at least 12 hours to remove bitterness.
3. Bring the etrog and water mixture to a boil and simmer uncovered for about 20 minutes.
4. Drain. Add 6 more cups of water per etrog and again refrigerate for at least 12 hours.
5. Add ¾ cup sugar per etrog to the mixture and simmer for at least 1½ hours, until the water becomes syrupy and the fruit becomes clear. Overcooking caramelizes and darkens the jelly, intensifying the flavor, so don't be afraid of overcooking it. Undercooked soupy jelly isn't tasty.
6. Refrigerate or freeze jelly in small portions in plastic bags or glass jelly jars.

WRJ / SISTERHOOD NEWS



January events were fun and informative. The 'possum, king snake, owl, and turtle were educational and enjoyable to see. Many thanks to those who attended and donated; the Carolina Wildlife program brought in enough funds to cover Sisterhood's cost. The snacks and deserts made by our members were enjoyed by not only the adults, but also those in the Religious School who were able to attend. Programming chair Marcia Geers did an excellent job in carrying out this program, including the photography of our guests. Visit carolinawildlife.org for more information about this wonderful organization.

During the "Stitch & Sew" program that took place during Brotherhood's annual blood drive, some learned a new skill, others taught, and still others just socialized.

The TOL Book Club, sponsored by TOL WRJ, meets the second Tuesday of every other month at 7pm in the TOL Library. Beginning in March, it will take place on the second **Thursday of every other month**.

Thursday, March 8, 2012: *The Invisible Bridge* by Julie Orringer

There is no charge to attend and no registration – just show up! New members are encouraged. All are welcome. For further information please contact [Amanda Hamilton](mailto:Amanda.Hamilton@tolsc.org) or [Ilene King](mailto:Ilene.King@tolsc.org).

GREEN TEAM UPDATE

The Green Team held a successful rain garden cleanup on December 18. Many weeds were removed. We will hold one or two more sessions before the Big Nosh so that the rain garden will be ready for visitors.

Please send us an email at greenteam@tolsc.org if you can help in our rain garden.



Richland County Councilman Jim Manning helping on December 18, 2011.



Remember to Reduce, Reuse, Recycle

Columbia Family Shelter Christmas Lunch

Many individuals gave of themselves to prepare a Christmas lunch for the Columbia Family Shelter. Over thirty people contacted me and voiced their desire to help with the lunch - so many, in fact, that I was not able to use everyone. I do want to thank everyone for their willingness to help.

I would like to thank Ilene King for her support as the chair of the Social Action committee and for donating supplies for the shelter. Thanks also go out to Eric Feuerstein, Joy and Neil Parks, and Ed Hertz for their participation in coordinating the event, and to Ed for purchasing the food.

On Friday, December 23, Eric, Joy, and Neil, along with David Reddy, and Rabbi and Ruth Marcus, began preparing and cooking a number of dishes for Sunday. On Sunday morning, Eric and I, along with Steve and Helga Cohen, Joan Tucker, and Mary Helen Baum, finished preparing and cooking the remainder of the meal. Along with preparing the meal, the team did a tremendous job cleaning the kitchen. It was spotless! Meanwhile at the shelter, Pamela, Sarah, and Ellie Feuerstein, along with Jill, Elena, and Stephanie Carr, prepared the dining room for the meal by setting up tables and chairs, putting on tablecloths, putting out Poinsettia plants (donated by David Reddy), and getting dishes, cups, etc. ready to serve. The Feuersteins, Carrs, and Rick and Debbie Cohn served the meal to shelter residents. They seemed to enjoy the delicious food very much and thanked us.

I would also like to thank Laney Cohen, Elisa Westfall, Linda Rodgers, Jocelyn Burg, and Gail Bienstock for providing desserts for the lunch, as well as all the congregants who donated money to help offset the cost of the meal.

The State Newspaper published an article on several organizations that provided meals on Christmas day. The Tree of Life was included in that article along with a photo of Eric and Rick. The article is posted on the Brotherhood bulletin board, which is located outside the chapel.

Thanks again to everyone who was involved in making this lunch possible.

– David Carr, CFS Lunch Coordinator & Brotherhood President

BROTHERHOOD NEWS

Brotherhood Bike Rides

Sunday, February 5th is the next Brotherhood bicycle ride, leaving from the Temple at **9:30am**. The course will be from the Temple to Fort Jackson and back. We will ride approximately 25 to 30 miles at a 15MPH pace. All riders are welcome. It is recommended you contact [David Carr](mailto:DavidCarr@TreeofLifeBH@gmail.com) at [TreeofLifeBH@gmail.com](mailto:DavidCarr@TreeofLifeBH@gmail.com) if you are interested in riding so he can communicate any changes or updates.

Chanukah Dinner

The annual Chanukah dinner was held on Friday, December 23. We fed approximately 100 people. To borrow a phrase from Brad Smith, "The Brotherhood was a well-oiled machine." Thanks to Jim Braun, Gabe Contino, Pat Contino, Eric Feuerstein, David Greenhouse, Harvey Helman, Ed Hertz, Marc Rapport, Brad Smith, and Todd Weiss for their help preparing, cooking, serving, and cleaning up.

Mark Your Calendar

The Brotherhood will be providing lunches for the Religious School on Sunday, **March 11**. Watch for reminder e-mails, and don't forget to sign-up on our website www.tolsc.org.

Blood Drive

Tree of Life held our annual Red Cross blood drive on Sunday, January 22nd. Our goal was 50 pints. More details will be in next month's newsletter. Thanks to everyone who donated this year.

Latke Hut

We did not make enough progress on the Latke Hut to cook in it for our annual Chanukah dinner on December 23 as we had hoped, but are making good progress and hope to be completely finished by the end of January.

Brotherhood Annual Meeting

The Brotherhood annual meeting will be held on April 29th. We will elect next year's board and discuss projects and events for the coming year. The time and location are still being determined. Please mark your calendar and plan on attending.

New Life Productions

Neil Simon's The Gingerbread Lady



Directed by: Sheila Blacher

After ten weeks of intensive therapy at a rehab clinic, a failed singer (Evy Meara) returns to her New York apartment determined to restart and rebuild her life. Everything seems to be going great for her at first, but she slowly (or not so slowly) falls back into her old lifestyle. Her friends and family begin to realize that Evy is not as rehabilitated as they had hoped.

Critics believe that "The Gingerbread Lady" is one of Neil Simon's best plays!

**Thursday, March 1...Saturday, March 3...
Sunday, March 4**

**All performances are at Tree of Life Congregation.
Purchase tickets now on the TOL website.**

MEMBER NEWS

Mazel Tov to

John Baker, the Humanitarian of the Year Award recipient, for The Palmetto Society

Gabe Contino & family, on his becoming a Bar Mitzvah in December

Sarah Shtessel & family, on her becoming a Bat Mitzvah in January

Refuah Shleima

Get well wishes to TOL members recently hospitalized or at home recovering: **Hal Birch, Edith Kline, Linda Rodgers, Sid Sasiene, and Elsie Wolff.**

Condolences to

Ethel Brody & family on the loss of her sister, **Leona Sobel**

Gary & Janis Mitchell and family on the loss of his father, **Roy Mitchell**

The family of **Eleanor Hack**

The family of **Bash Savitz**

Adele & Herman Salzberg, on the loss of her brother, **Herman Erlichson**

Deborah Salzberg & Abby McConahay, on the loss of their uncle/great-uncle **Herman Erlichson**

Honor Roll

We salute and thank our wonderful volunteers!

Office – Joan Amado, Mary Helen Baum, Sandy Hertz

Religious School Office – Joan Tucker

Hospital Calls – Sandy Hertz

FEBRUARY BIRTHDAYS

Andrew Barkan	Feb. 1	Arthur Iskhakov	Feb. 13	Linda Sterne	Feb. 22
Harrison Moses	Feb. 2	David May	Feb. 13	Yvette Frank	Feb. 24
David Bannister	Feb. 3	Jean Ginsberg	Feb. 14	Lisa Helfer	Feb. 24
Zachary Helman	Feb. 4	David Carr	Feb. 16	Emmy Jo Mustard	Feb. 24
Lois Wandersman	Feb. 4	Dennis Cohen	Feb. 16	Leeam Stein	Feb. 24
Barbara Novinbakht	Feb. 5	Linda Kerner	Feb. 16	Mark Crawford	Feb. 25
Elsie Wolff	Feb. 6	Michael Mischner	Feb. 16	Marlene Mischner	Feb. 25
Hannah Wassermann	Feb. 7	Alexander Ogden	Feb. 16	Sarah Mullis	Feb. 25
Lora Stein	Feb. 8	Nina Contino	Feb. 17	Kay Radin	Feb. 25
Barri Thompson	Feb. 8	Marilyn Ehmke	Feb. 17	Amy Reynolds	Feb. 25
Elizabeth Brown	Feb. 10	Alexander Bernstein	Feb. 18	Davis Bland	Feb. 26
Barry Bernstein	Feb. 11	Keenan Silver	Feb. 18	Jasper Wessinger	Feb. 26
William Barkan	Feb. 12	Paul Beattie	Feb. 20	Alyssa Greenhouse	Feb. 28
Laney Cohen	Feb. 12	Marguerite Brill	Feb. 21	Sheldon Kall	Feb. 28
Judi Emanuel	Feb. 12	Richard Cohen	Feb. 21	Retha Lynch	Feb. 28
Dori Nudelman	Feb. 12	Julien Katz	Feb. 22	Jewel Rotholz	Feb. 28
Marilyn Picow	Feb. 12	Gracie May	Feb. 22		

FEBRUARY ANNIVERSARIES

Cheri & Allen Alexander	Feb. 5	Thalia & Hal Birch	Feb. 9
Peggy & Jeff Miller	Feb. 7	Mia & Marc Rapport	Feb. 14
Suzy Herzog & Harvie Nachlinger	Feb. 8	Pam & Mark Crawford	Feb. 26

WRJ SHABBAT SERVICE REPS

Feb. 3 - TBD	Feb. 17 – Beverly Kaplan
Feb. 10 – Diane Mellitz	Feb. 24 – Cheri Alexander

CONTRIBUTIONS

We gratefully acknowledge the following thoughtful donations:

Evelyn & Dan Daniel Sisterhood Fund

Susan & Charles Altman, wishing a *Refuah Shleima* to Arline Polinsky and Elsie Wolff
 Susan & Charles Altman, in memory of Eleanor Hack
 Susan & Charles Altman, wishing a Mazel Tov to Ruth & Rabbi Sandy Marcus on the birth of their grandson

General Fund

Jackie Brody, in memory of Leona Sobel
 Cora & Ted Feintuch, in memory of Stan Kessler
 Meri Gergel, in memory of Leona Sobel
 Verna Hughes, in memory of Leona Sobel
 Harriet Posner, in memory of Leona Sobel
 Anne & Alan Reyner, in memory of Clara Helfer

High Holy Day Prayer Book

Linda Frederico, in memory of Leona Sobel

Prayer Book

Ruby Harris, in memory of Jenny Baker Ravdin
 Ruby Harris, in memory of Max Benjamin Ravdin
 Ruby Harris, in memory of Frederick Julius Ravdin

Rabbi's Discretionary Fund

Robin & Rick Chapman & family, in appreciation of Alan & Anne Reyner, Beryle & Pierre Jaffe, Marcie & John Baker, and Gloria & Henry Goldberg

Neil Cartiff Memorial Religious School Fund

Nancy Cartiff, congratulations to Amy Scully

Sisterhood Courtesy Fund

Barbara & Bruce Becker, in memory of Muriel Masur
 Tree of Life Sisterhood, in memory of Leona Sobel

COMMUNITY NEWS

LUNCH & LEARN WITH OUR RABBIS at the Katie & Irwin Kahn JCC

Bring your lunch and discuss current topics with Columbia's Rabbis
2nd Wednesday of each month
12:15 – 1:15 p.m.

Feb. 8: Rabbi Daniel Sherman, Tree of Life Congregation
"A Tu B'Shevat Discussion: Judaism & the Environment"

For more information about this FREE program, please contact the JCC at 803-787-2023.

COMMUNITY MIKVEH EVENT Thursday, February 23 at 7:30 p.m. Beth Shalom Synagogue

There will be an exciting program called "**Coming Together for the Mikveh: A Gathering for Water and Hope**" to be held in the BSS social hall on Thursday, February 23 at 7:30pm. Dress is casual with desserts and coffee/tea being served. There will be an educational program about the mikveh and a short presentation outlining the need for the complete restoration and rededication of our community mikveh. Also, there will be a speaker and a tour of the mikveh itself. All members of our community are welcome and are encouraged to attend.

For more information, please contact, Marc Berger, Mikveh Committee Chair (803-543-6901 or wotdoc@yahoo.com). If you would like to make a donation to the mikveh, you may do so by sending it to the BSS office, attention to the mikveh. All donations are gratefully accepted and can be made payable to the Hanna Schwalbe Community Mikveh.

JEWISH NEWS FROM USC

HILLEL AT USC WILL HAVE OUR VERY OWN BIRTHRIGHT ISRAEL TRIP THIS SUMMER. Birthright Israel is a FREE trip for Jewish young adults ages 18-26. Our trip will be for Jewish students at USC. **REGISTRATION FOR THIS TRIP OPENS FEB. 15 (Feb. 14 for returning applicants).** Registration usually closes within a few days. It is very important that students who want to go register on the first day! Our trip provider is Young Judaea. This FREE trip is a great opportunity for Jewish students at USC to bond with one another and experience a travel opportunity in the Land of Israel! We are very excited to be able to offer this trip to our students.

How do you register or find out about the trip? Go to www.toisraelnow.org. It is HIGHLY recommended that students sign up for registration updates. To do this, click on "trip dates and registration." Under the tab "what kind of trip interests you," choose Hillel and the University of South Carolina.

For more information, contact Rabbi Leah Doberneschor at (803) 771-6867 or ldoberneschor@gmail.com.



MITZVAH DAY FEBRUARY 12, 2012

11:30 am
at the Katie & Irwin Kahn Jewish Community Center

LET'S JOIN TOGETHER AS A COMMUNITY TO
REACH OUT-RENEW-REPAIR THE WORLD AROUND US!

For more information and to register, visit
www.jewishcolumbia.org.

YAHREZITS

February 3 – Anna Bornstein, Molly Korash, Edwin Nathan Mittle*, Josephine Specter*, Larry Newton*, Rebecca Blenner, Darrell Cooper*, Sol Kohn*, Charles Thide, Mathilde Nover Gruber*, Bernard Lefton*, Meyer Love*, David Richman*, Harry Artz, Susan Epstein Furman*, Jerry Berez, Sylvia Cohen, Dean Koon, Rose Wildman Stern, Elias Stiglitz, Mira Volynets

February 10 – Mac Davidson, Eugene Korash*, Barry Levey*, Sue Mandell*, Ruth Richmond*, Paul Garber*, Paul Ernest Kalman, Sidney Zucker, Alfred Ackerman*, Hershel Koon, Wilma Peet Hill, Isadore Jack Hoffman*, J. Paul Silberberg*, Herbert Spiers*, Michael Weisberg*, Hilda Fischman*, Henrietta Block*, Samuel Savitz*, Elsie Hayman Bruck*, Gertrude Segal Furman*, Charles Robert Meador

February 17 – Steele Brouillette, Morris Alion*, Helene Lipsitz, Mabel Mann, Henrietta Schleider Farber*, Bella Kalb, Nellie Levine Winter*, Abram Aroneck*, Rabbi Harold Gelfman, Alfred Mischner, Ethel Radin, Ethel Ann Serbin*, Marshall Diamond, Florence Snyder, Kenneth Sorenson, Harry Vigodsky*, Alvah Hope Gould, Nancy Bedford Milman*, Ida Lee Weisberg*, Milton Block*, Bernard Fleischman, Sr.*, Herbert Grosby*, Robert Glenn Shultz, Rachael Zarek*

February 24 – Bernard Reyner, Yakov Volfson, Catherine Weiner*, Charles M. Herzog, David Wallace*, Goldie Weiner*, Herschel Cooper*, William Frisch, Jonathan Scott Train*, Norman Becker, Janet Pearlstine Cohn*, Jean F. Gergel*, Mildred Auerbach, Ilene Bronson*, Dorothy Berlin Herzog, Kay Politis*, Maurice Savitz*, Rena Sheftman*, Fran Truere, David Becker, Ernest Ellisor, Henry Steel*, Wolf Winter*, Henry Wolff*, Lillian Schulman*, Libbie Wittenberg*

**name memorialized by a plaque in the sanctuary*

BIMAH FLOWERS

January 6

Tatyana & Vladimir Shtessel, in honor of Sarah's Bat Mitavah
Carolyn & Alan Conway, in memory of Jeffrey Wander
Belle S. Fields, in memory of Patricia-ann F. Schwab
Irene & Fred Fields, in memory of Patricia-ann F. Schwab
Deborah, David, Alyssa, & Hannah Greenhouse, in memory of Rita Wasserman
Marc & Ann Posner, in memory of Philip Posner
Harriet Posner, in memory of Ben Levin
Rob & Amy Scully, in memory of Ben Levin
Feliks, Sarra, Kim, Raisa, and Leeza Rabinovich families, in memory of Joseph Rabinovich

January 13

Harriett Weinberg Bedinger, in memory of Judith Weinberg Thompson
Pierre Jaffe, in memory of Raymonde Jaffe
Diane & Sheldon Kall, in memory of Gertrude "Gigi" Becker
The Reyner family, in memory of Daniel Cooper Reyner
Howard Weiss, in memory of Stanley Weiss

January 20

Barbara & Bruce Becker and Laura Becker, in memory of Murray Buchsbaum
Dan, Lory, & Rebecca Bellino, in memory of Sandra Leavitt Barshop
Dan, Lory, & Rebecca Bellino, in memory of Marion Rothstein
Marlene Korash, in memory of Sophie Madoff
The Magaro family, in memory of Eddie Linzer
Richard Mandell, in memory of Nathan Mandell
Jewel Rotholz, in memory of Norman Rotholz
Jerry Rothstein, in memory of Edward Rothstein
Barry Sidenberg, in memory of Stanley Sidenberg
Gary & Joel Silverfield, in memory of Leo Silverfield

January 27

Cheri & Allen Alexander, in memory of Oscar Alexander
Susan, Charles, & David Altman, in memory of Dan Daniel
Art & Barbara Levy, in memory of Harry Blecker
Harriet Posner, in memory of Clara Levin
Amy & Rob Scully, in memory of Clara Levin
David & Karen Schwartz, in memory of Bryan McMullen

ONEG SHABBAT HOSTS

February 3 – **Chair: Marcia Geers**, Stephen & Roberta Friedland, Ann Gatton, Alan & Marcia Geers, Charles Geffen & Gaynell Gavin, Richard & Belinda Gergel, Richard & Ellen Helman

February 10 – Parents of Kitah Gimel students

February 17 – **Chair: Beverly Kaplan**, Ed & Sandy Hertz, Arthur & Yuliana Iskhakov, Rebecca Jacobson, Diane & Sheldon Kall, Erica Johnson, Dennis & Beverly Kaplan

February 24 – **Chair: Cheri Alexander**, Suzy Herzog & Harvie Nachlinger, Scott & Lisa Kaplan, Gregory & Cynthia Katz, Liza & Talap Khasiyetova, Ilene King, Sheila King

*Note: If you are unable to bake or purchase Oneg Shabbat refreshments, you may donate \$20.00. Homemade goods are always preferable. Checks need to be sent to the temple office **two weeks prior to your Oneg Shabbat date**. Thank you for your support.*

February 2012



Sun	Mon	Tue	Wed	Thu	Fri	Sat
29 Brotherhood Religious School Lunch Fundraiser	30	31	1 8:00pm Introduction To Judaism	2 7:00pm Ritual Committee Meeting	3 6:45pm KIDZ Shabbat 7:30pm Shabbat Service	4
5 8:45am TYG Bagel Breakfast Fundraiser	6	7	8 5:00-7:30pm Adult Ed w/Risa 6:30pm Executive Board Meeting 7:30pm Board of Directors Meeting	9	10 7:00pm Shabbat Service & Tu B'Shevat Seder (Kitah Gimel Students)	11 10:00am Shabbat Morning Service & Torah Study
12 No Religious School Classes MITZVAH DAY	13 NEWSLETTER DEADLINE FOR MARCH	14	15 5:00-9:00pm Adult Classes 7:00PM BIG NOSH Meeting	16 6:45pm Sisterhood Board Meeting	17 7:30pm Shabbat Service	18 7:00pm Wine Tasting Event (not at Temple)
19 No Religious School Classes	20 PRESIDENTS' DAY	21	22 5:00-9:00pm Adult Classes	23	24 7:30pm Shabbat Service	25
26	27	28	29 5:00-9:00pm Adult Classes	1 Brotherhood Play "Gingerbread Lady" by Neil Simon	3 6:00pm KIDZ Shabbat Dinner & Service 7:30pm Shabbat Service TYG Kallah (Georgia)	3 10:00am Shabbat Morning Service & Torah Study Brotherhood Play "Gingerbread Lady" by Neil Simon TYG Kallah (Georgia)



Tree of Life Congregation
6719 North Trenholm Road
Columbia, SC 29206

ADDRESS SERVICE REQUESTED

NON-PROFIT ORG.
U.S. POSTAGE
PAID
COLUMBIA, SC
PERMIT #121

TREE OF LIFE CONGREGATION

Established 1896
6719 North Trenholm Road * Columbia, SC 29206
Office: (803) 787-2182 * Fax (803) 787-0309
Website: www.tolsc.org
Email: tolcong@bellsouth.net
Office Hours: Monday - Thursday 8:30 am - 5:00 pm
Friday 8:30 am - 4:00 pm
Closed daily 12 noon - 1:00 pm



RABBI Daniel M. Sherman
rabbisherman@bellsouth.net

RABBI EMERITUS Sanford T. Marcus, D.D.

Risa Strauss, RELIGIOUS SCHOOL DIRECTOR
risatol@bellsouth.net

OFFICERS

President	Stephen Savitz
First Vice President	Rick Cohn
Second Vice President	Lisa Helfer
Secretary	Bill Strauss
Treasurer	Paul Westfall
Finance Chair	Debra Tedeschi
Immediate Past President	Jeff Selig

BOARD MEMBERS

David Carr	Kim Moses
Laney Cohen	Arline Polinsky
Richard Cohen	Marc Posner
Annette Goldstein	Marc Rapport
Bruce Greenberg	Amy Scully
Deborah Greenhouse	Brad Smith
Donna Magaro	Julie Strauss
	G. Todd Weiss

LIFETIME BOARD MEMBERS

Bernard Fleischman, Jr.
Stephen Savitz
Howard Weiss

COMMITTEE CHAIRS

Endowment	Ned Strauss
Finance	Debra Tedeschi
Fundraising	G. Todd Weiss
House & Grounds	Brad Smith
Membership	Laney Cohen
Outreach	Debra Tedeschi
Religious School Board	Kim Moses
Ritual	Richard Cohen
Social Action	Ilene King

AFFILIATES

Brotherhood President	David Carr
Sisterhood President	Cheri Alexander
COFTY President	Naomi Nudelman

TOL NEWSLETTER

Designer/Editor	Cheryl Nail
Proofreader	Marc Rapport

TEMPLE STAFF

Office Manager	Linda Frederico
Custodian	Demitris Gilmore

TEMPLE MUSICIANS

Music Director	Sharon Witherell
Director Emeritus	Jackie McNeil