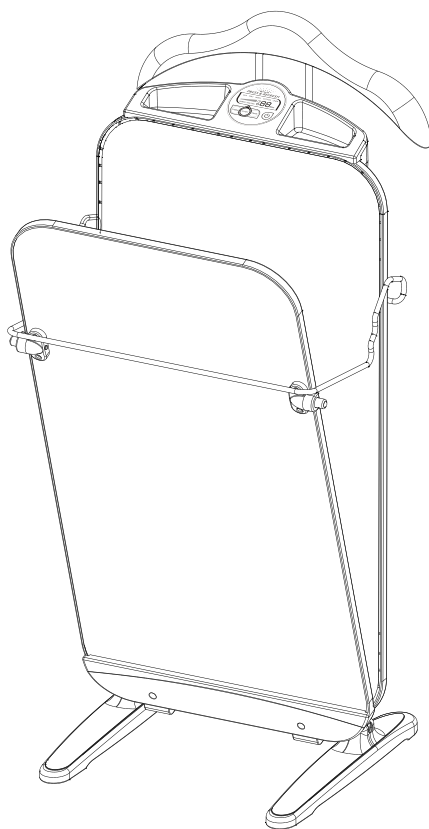


sienna™

Classic & Deluxe Pants Press

SPP-0669

SPP-0670



INSTRUCTION MANUAL

INTRODUCTION

Thank you for choosing Sienna for your household pressing needs. Our pants press products are an affordable way to have a professional look without draining your wallet. You have begun the first step into saving time and money on trips to the cleaners. Our Sienna pants presses are a fresh twist on the timeless gentlemen's valet and provide quality pressed pants with a dry cleaners look.

Classic

The Classic Pants Press is an innovative product that allows you to have a professional look right from your own home. This pants press is well-suited to take out wrinkles from an assortment of fabrics. By pressing the start button, the Classic pants press will create crisp creases in your pants and automatically shuts off when it reaches the optimum temperature of 185° F to prevent overheating. This pants press creates a continuous even heat so that your pants are pressed uniformly. The user-friendly design is intended for those who are looking for an easy, non-nonsense way to press your pants. It features a 280-watt heating element, a coat hanger for shirts and jackets, and two storage compartments for organizing necessities such as cufflinks, a wallet or keys.

Deluxe

The Deluxe Pants Press is the Classic model with a personal touch. It features an LED digital control panel for more customized pressing. There is a fabric button that allows you to choose your desired fabric setting. Choose between silk, poly, wool, cotton and linen to satisfy your pressing needs. It also has a timer button to let you decide how long you press your pants in intervals of 20, 30, and 45 minutes allowing for crisp, smooth, long-lasting creased pants.

SAFETY GUIDELINES

The Sienna Classic (SPP-0669) and Deluxe (SPP-0670) Pants Presses are for indoor domestic use only. Any commercial use will void warranty. They are designed for pressing pants and not intended for any other use.

Safety Instructions:



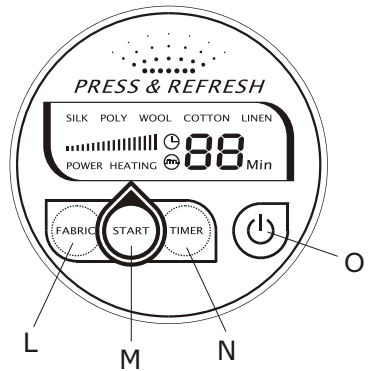
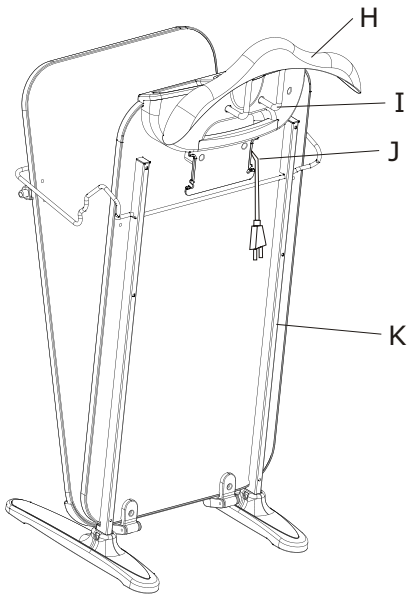
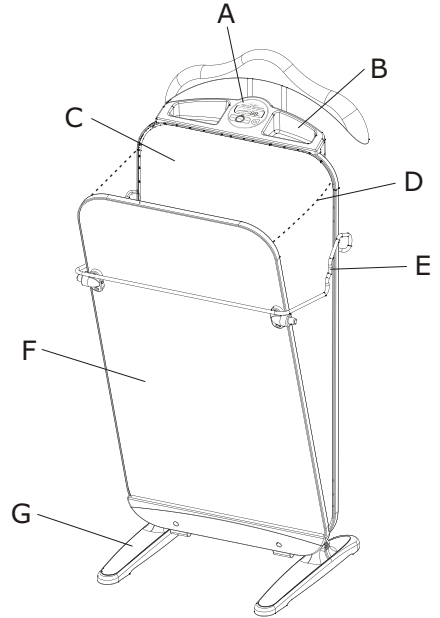
WARNING: Be sure to read and follow all safety instructions before using your pants press. Proper care and maintenance will help to expand the life of your press.

When using an electrical appliance, basic precautions should always be followed. To reduce the risk of fire, electric shock, or injury:

- Be sure to unplug the electrical cord when appliance is not in use and while servicing.
- Do not leave the press unattended while young children, pets or infirm persons are around.
- Children should be supervised and cautioned that the press is not a toy and should not be played with.
- Do not immerse the press in water or other liquids.
- Do not handle press with wet hands.
- Do not pull power cord to disconnect appliance from socket or use cord as a handle.
- Be sure to keep cord away from heat, water, and sharp edges.
- Do not use if cord or plug is damaged.
- Do not use extension cords or outlets with inadequate current carrying capacity.
- Use only as described in manual. Operating unit in any way other than recommended may result in damage to unit or injury to operator.
- Do not disassemble unit or attempt to make any repairs yourself. Incorrect assembly or repair could result in a risk of fire, electric shock, or injury to persons when operating.
- Stop using press if circuit breaker activates. Beware of risk of shock.
- Allow your press to cool down before storing in a cool, dry place.

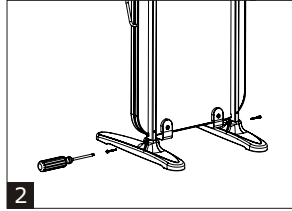
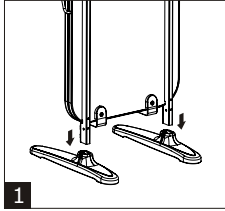
KEY FEATURES

- A. CONTROL PANEL
- B. STORAGE
- C. PRESS BOARD
- D. CHAIN
- E. PRESS BOARD BAR
- F. PRESS BOARD PLATE
- G. FOOT
- H. COAT HANGER
- I. HANGER SUPPORT
- J. CORD WRAP
- K. SUPPORT
- L. FABRIC SETTING CONTROL (Deluxe Only)
- M. START BUTTON (Deluxe Only)
- N. TIMER BUTTON (Deluxe Only)
- O. ON/OFF BUTTON

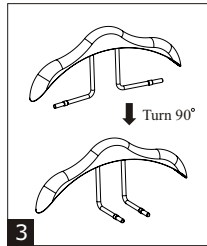


ASSEMBLY AND USE

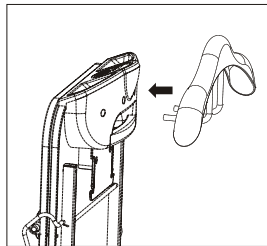
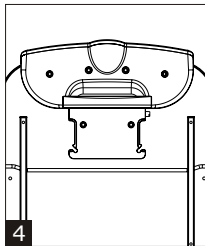
- 1) Attach body of unit to feet.
- 2) Secure press to feet with screws provided until fully tightened (use Philips screwdriver.)



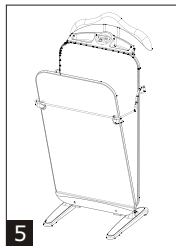
- 3) With coat hanger, turn chrome supports 90° degrees so that when you view the hanger from the back, they are pointing away.



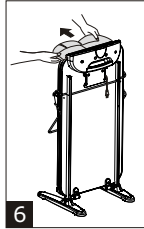
- 4) Push the hanger with supports into the back of the panel as illustrated.



- 5) To open front plate, slowly pull the press board bar up to open front pressing plate. The press board bar will hold the front pressing plate in the open position.

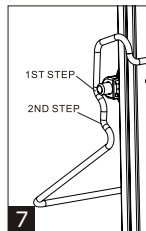


- 6) To insert pants, place trouser legs as far down as possible between the front pressing plate and the press board. The waistline of the pants should be hung over the top edge of the front pressing plate. Align pant legs with the grooves in front press plate. Hold the waste line of the pants and gently pull upward. This will smooth out any unwanted wrinkles by ensuring the pants are flat between boards.

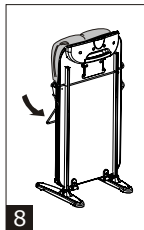


CAUTION: Be sure that the pants legs are laying flat over the board to prevent risk of unwanted creases.

- 7) To close front press plate, pull press board bar down. Select either 1st step for thick fabric or 2nd step for thin fabric.



- 8) Pull the press board bar down firmly until the front pressing plate is fully locked into the closed position.



- 9) After turning press on, choose your desired fabric setting (Deluxe model only). Next, select the pressing time you desire then press start (Deluxe model only).

IMPORTANT: Press on/off button to cancel your selected pressing cycle.

- 10) Once your pressing cycle is complete, the press will beep and the indicator light will automatically turn off.

TROUBLESHOOTING



CAUTION: Prior to using or maintaining your pants press, isolate the unit by removing the cord from the power socket.

PROBLEM	SOLUTION
LED is not on	<ul style="list-style-type: none">• Ensure press power cord is correctly plugged into a 120V AC power outlet only.• Ensure circuit breaker is operational.• Try operating press from another power outlet.• If unit is still not working, call customer service at 1-888-574-3662.
No heat	<ul style="list-style-type: none">• Ensure press is plugged in.
Buttons are not working properly	<ul style="list-style-type: none">• Unplug the unit from the power outlet for 5 minutes then plug back in.

CUSTOMER SUPPORT

For problems with your Sienna Pants Press, please refer to Troubleshooting guide. Additional inquiries should be directed to our Customer Service department by calling 1-888-574-3662 or by e-mail to: customerservice@anvidproducts.com.

ONE YEAR LIMITED WARRANTY

Our Sienna product warranty extends only to the original customer purchaser of the product. It is warranted by the manufacturer to be free from all defects in materials or workmanship for a period of one year from the date of original purchase. This warranty is subject to the following conditions, exclusions and exceptions.

Exclusions:

This warranty does not cover normal wear and tear of parts and does not apply to any product that has been tampered with or used for commercial purposes. This warranty does not cover damage caused by misuse, abuse, negligent handling or damage due to mishandling in transit or shipping. This warranty does not cover damage or defects caused by or resulting from repairs, service or alterations to the product or any of its parts, which have been performed by a repair person not authorized by the manufacturer. This warranty is effective only if the product is purchased and operated in the USA or Canada, and does not extend to any units which have been used in violation of written instructions furnished by the manufacturer, or to units which have had the serial number removed, altered, defaced or rendered illegible.

Performance:

During the limited warranty period, the manufacturer will, at its option, repair or replace free of charge a defective product or part that is covered by this warranty. As a matter of warranty policy, the manufacturer will not refund the purchase price. A repaired or replacement product will be covered by this warranty for the balance of the initial one year warranty period.

To contact Customer Service:

Write: Anvid Products, Inc.
1401-1499 Greenville Road
Livermore, CA 94550

E-mail: customerservice@anvidproducts.com

Or call :1-888-5SIENNA (1-888-574-3662)

Please refer to your product name and model number when contacting Customer Service.

Customer Service will give you further instructions for returning a defective product for repair or replacement. When returning a defective product, carefully pack the item to avoid damage in shipping, the manufacturer cannot assume responsibility for loss or damage during incoming shipment. We recommend that you insure the package, as damage in shipping including the shipping cost is not covered under our warranty. Be sure to include the following items with your product: any accessories related to the product, your name, complete address and phone number, a note describing the problem you experienced; and a copy of your sales slip or other proof of purchase to determine warranty status. C.O.D. shipments cannot be accepted.

Limitation of Remedies: No representative or person is authorized to assume for the manufacturer any other liability in connection with the sale of our products. This limited warranty is not transferable and any sale, transfer or other disposition of the product voids this limited warranty. There shall be no claims for defects or failure of performance or product failure under any theory of tort, contract or commercial law including, but not limited to, negligence, gross negligence, strict liability, breach of warranty and breach of contract.

ANY IMPLIED WARRANTIES, OBLIGATIONS, OR LIABILITIES, INCLUDING, BUT NOT LIMITED TO, THE IMPLIED WARRANTY OF MERCHANTABILITY AND FITNESS FOR A PARTICULAR PURPOSE, SHALL BE LIMITED TO THE DURATION OF THIS WARRANTY. Some states do not allow limitations on how long an implied warranty lasts, so the above limitations may not apply to you.

REPAIR OR REPLACEMENT SHALL BE THE SOLE REMEDY OF THE PURCHASER UNDER THIS LIMITED WARRANTY, AND IN NO EVENT SHALL THE MANUFACTURER BE LIABLE FOR ANY SPECIAL, INCIDENTAL, OR CONSEQUENTIAL DAMAGES, LOSSES OR EXPENSES YOU MAY INCUR IN CONNECTION WITH YOUR PURCHASE OR USE OF THE PRODUCT OR FOR ANY BREACH OF THIS OR ANY OTHER WARRANTY, EXPRESS OR IMPLIED, WHATSOEVER. Some states do not allow the exclusion or limitation of special, incidental, or consequential damages, so the above limitation may not apply to you. This limited warranty gives you specific legal rights, and you may also have other rights which vary from state to state.