

## Aragon Black White Grey

stocked sizes	pcs/box	sf/box
6" X 6"	12	3 SF

5/8" THICK  
 SOLD IN FULL BOXES ONLY



## Aragon Multi

stocked sizes	pcs/box	sf/box
6" X 6"	12	3 SF

5/8" THICK  
 SOLD IN FULL BOXES ONLY

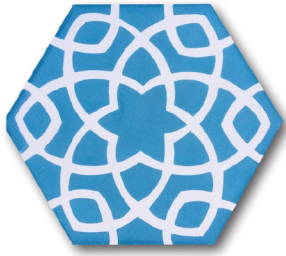


## Cadiz

stocked sizes	pcs/box	sf/box
8" X 8"	12	5.17 SF

5/8" THICK  
 SOLD IN FULL BOXES ONLY





## Colette Blue

stocked sizes	pcs/box	sf/box
HEXAGON 8"	12	4.45 SF

5/8" THICK  
SOLD IN FULL BOXES ONLY



## Colette Sage

stocked sizes	pcs/box	sf/box
HEXAGON 8"	12	4.45 SF

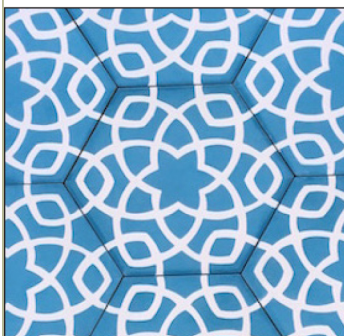
5/8" THICK  
SOLD IN FULL BOXES ONLY

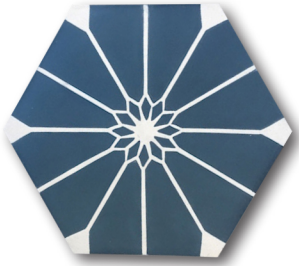


## Jenna

stocked sizes	pcs/box	sf/box
8" X 8"	12	5.17 SF

5/8" THICK  
SOLD IN FULL BOXES ONLY

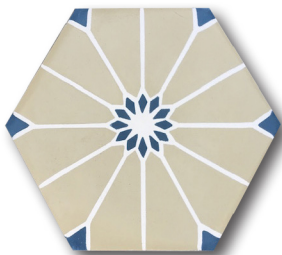
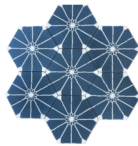




## Margot Navy

stocked sizes	pcs/box	sf/box
HEXAGON 8"	12	4.45 SF

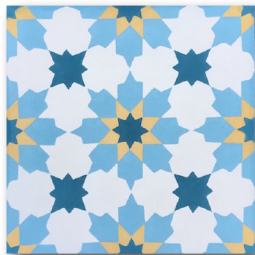
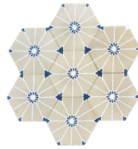
5/8" THICK  
SOLD IN FULL BOXES ONLY



## Margot Tan

stocked sizes	pcs/box	sf/box
HEXAGON 8"	12	4.45 SF

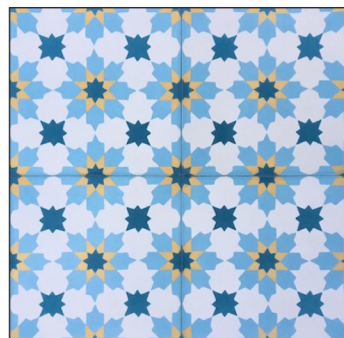
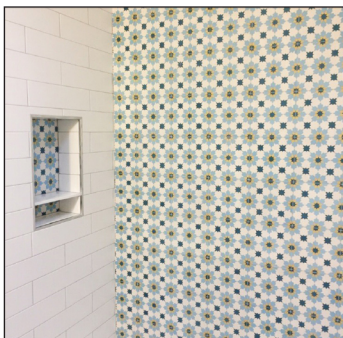
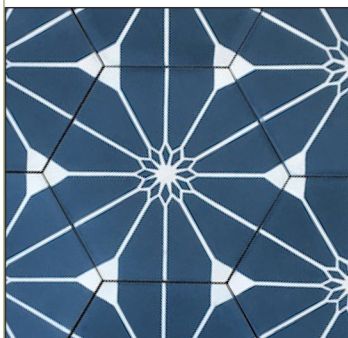
5/8" THICK  
SOLD IN FULL BOXES ONLY



## Pasha Blue Yellow

stocked sizes	pcs/box	sf/box
8"X 8"	12	5.17 SF

5/8" THICK  
SOLD IN FULL BOXES ONLY







## Pasha Dark Blue

stocked sizes	pcs/box	sf/box
8"X 8"	12	5.17 SF

5/8" THICK  
SOLD IN FULL BOXES ONLY



## Pasha Tan Grey

stocked sizes	pcs/box	sf/box
8"X 8"	12	5.17 SF

5/8" THICK  
SOLD IN FULL BOXES ONLY



## Sirocco Black White Grey

stocked sizes	pcs/box	sf/box
8"X 8"	12	5.17 SF

5/8" THICK  
SOLD IN FULL BOXES ONLY







## Sirocco Yellow

stocked sizes	pcs/box	sf/box
8"X 8"	12	5.17 SF

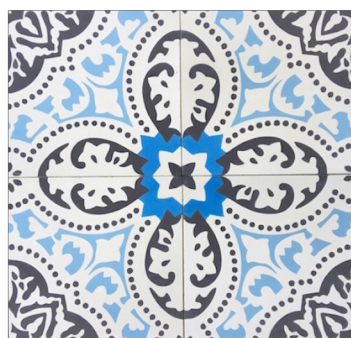
5/8" THICK  
SOLD IN FULL BOXES ONLY



## Shergui Blue

stocked sizes	pcs/box	sf/box
8"X 8"	12	5.17 SF

5/8" THICK  
SOLD IN FULL BOXES ONLY





## St. Germain

stocked sizes	pcs/box	sf/box
8"X 8"	12	5.17 SF

5/8" THICK  
SOLD IN FULL BOXES ONLY

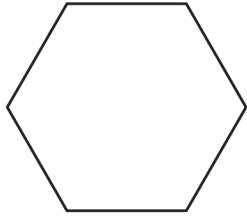


## Tarabel

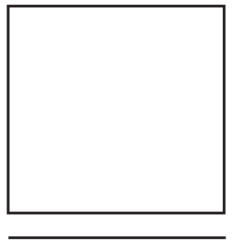
stocked sizes	pcs/box	sf/box
8"X 8"	12	5.17 SF

5/8" THICK  
SOLD IN FULL BOXES ONLY

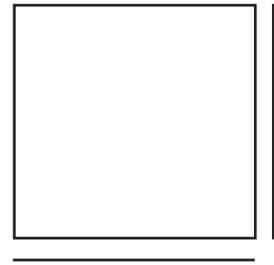




HEXAGON 8"



6" X 6" SQUARE



8" X 8" SQUARE





# GUIDELINES FOR INSTALLING CEMENT TILES

## IMPORTANT *Guidelines for Installing Cement Tiles:*

- *Handle tiles carefully, with clean hands.*
- *Do not walk, make pencil marks or use masking tape on tiles.*
- *Pull tiles from different boxes to achieve optimal blend. Variation in color or thickness is the nature of cement tile and is not a flaw.*
- *Seal tiles before and after grouting.*
- *Grout joint should be very thin for a traditional and elegant look (1 to 2 mm or 1/16 inch maximum).*
- *Use neutral or grey non-sanded grout; never use epoxy grout.*
- *NEVER use a rubber hammer as it can create micro fissures on the tiles.*
- *Tiles should be leveled by hand and with clean hands.*
- *Never lay tile onto fresh concrete.*
- *Make sure floor is perfectly level prior to starting installation and completely DRY to avoid efflorescence.*

## INSTALLATION

- *Cement tiles must be installed on a well-leveled, clean and dry surface. Humid subsoil may cause efflorescence on the surface.*
- *Pre-wet tile prior to setting by dipping tile into water for 3 to 5 seconds, letting excess drip off.*
- *Apply thin set evenly on the installation surface as well as the back of each tile (back-butter) using a ½ inch notched trowel.*
- *Position the tiles with your hands, without hammering, leaving a 1mm to 2mm grout joint (1/16" maximum).*
- *Immediately wipe off any excess thin set from the surface of the tiles as tiles are installed.*
- *Work in small, reachable sections at a time.*
- *Once tile is installed, clean the floor thoroughly with water to remove any residue.*

# GUIDELINES FOR INSTALLING CEMENT TILES

## SEALING

- *Make sure the installed floor is thoroughly dry and clean before applying sealer (24 to 72 hours depending upon weather conditions).*
- *Apply at least 2 coats of sealer, one before grouting and one after grouting with a clean white cotton cloth.*
- *Do not over apply sealer.*
- *Wipe off any excess.*
- *Always apply sealer to an uninstalled piece of tile before applying to entire installation in order to measure the grade of absorption.*

## GROUTING

- *Use neutral or grey non-sanded grout. Some colored grouts may stain the tile.*
- *Apply grout on joints only; avoid spreading grout over the surface of the tiles.*
- *Clean extra grout immediately with a wet sponge.*
- *Never use acid to remove excess grout or discoloration caused by the grout.*

## MAINTENANCE

- *Apply a solvent-based Terracotta wax such as HMK P-328 to reduce water and dirt penetration, followed by a acrylic conditioner such as HMK P-326 Terracotta Care. (Do not apply in showers or outdoors).*
- *For everyday maintenance, mop with a mild PH balanced liquid stone soap such as HMK P-324 or similar.*
- *Never use harsh detergents, acids or alkaline products on cement tiles*

# GUIDELINES FOR INSTALLING CEMENT TILES

## FOR YOUR CONVENIENCE

*We stock the following three products. Please order by part number referred to above and below:*

- *ZZ-HMK-P328-TERRWAX: HMK® P328 is a ready to use, natural wax that slightly enhances the color and leaves a satin sheen on unglazed terracotta, cement, clay and brick surfaces. Water and dirt penetration is reduced and surfaces become easier to*
- *maintain and more durable. Do not use in wet areas such as shower stalls. Note: HMK® P326 Terracotta Care should follow the application of HMK® P328 to help blend in any HMK® P328 unevenness. Allow HMK® P328 to cure for 24 to 48 hours before applying HMK® P326.*
- *ZZ-HMK-P326-TERRCARE: HMK® P326: a modified, water based acrylic conditioner and maintenance sealer/cleaner that enriches the color and structure of unglazed terracotta, cement, brick and clay tiled floors and gives a brilliant silky shine to the*
- *surface without the need for polishing. HMK® P326 develops a protective film that, with regular use, increases water and dirt resistance and makes textured and rough surfaces more resilient to heavy use and easier to care for.*
- *ZZ-HMK-P324-LIQSOAP: HMK® P324: a 100% natural, PH neutral, maintenance cleaner and conditioner for all natural and cast stone, agglomerate and ceramic tile, regardless of surface finish. With regular use, HMK® P324 forms a protective and invisible dirt repellent film, assisting impregnators and sealers in repelling stains. HMK® P324 has a totally natural appearance (cures clear) and colors in the tile become more vivid with repeated use.*

## FOR YOUR CONVENIENCE

*General cement tile installation instructions have been supplied as a guideline. As with all tile installation, please refer to your TCNA Handbook for complete instructions or consult your professional tile installer.*

*Enjoy the long-lasting beauty and timeless elegance of Indigo Cement Tile!*

**ambiente**

EUROPEAN TILE DESIGN

400 East Pine Street, Suite 210  
Seattle, WA 98122

206-524-2113  
ambientetile.com

