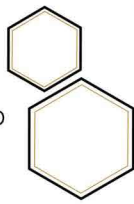


ambiente

EUROPEAN TILE DESIGN

400 East Pine Street, Suite 210
Seattle, WA 98122

206-524-2113
ambientetile.com



Villeroy & Boch
1748

OUTDOOR TILES

for a stylish look all round





Today, one does not have to be indoors to feel good and relax at home, for on warmer days in particular, life moves outside - where people can spend the evening enjoying the day's last rays of sunshine surrounded by nature.

Well-designed outdoor areas can significantly increase the quality of both living areas and commercial spaces, possibly introducing pleasant new uses in the process. Yet another reason why it is best to design them like indoor areas, giving preference to ceramics, an aesthetic and extremely practical choice.

The special OUTDOOR TILES from Villeroy & Boch are brand-name products that are available in a variety of designs and which are extremely durable and robust.

They can be laid on a variety of substrates and are an elegant alternative for enhancing life outdoors.

The OUTDOOR TILES collection offers a variety of advantages compared with other outdoor surfaces:



STYLE:

Uniform appearance of living areas and balconies, terraces, pathways and entrances.



MATERIAL:

vilbostone, high-quality, scratch- and abrasion-proof 20 mm thick brand porcelain stoneware tiles.



FROST-PROOF:

Frost-proof and weather-resistant when laid professionally.



COLOUR-FAST:

No changes in colour as a result of sunlight.



EASY TO CLEAN:

Surface-sealed in the factory with vilbostoneplus to prevent stains.



NON-SLIP:

Classification in non-slip classes R10/A and R11/B for outdoor areas.



RECTIFIED EDGES:

Millimetre-precision cut for laying with narrow joints.

ABERDEEN OUTDOOR20

– *Modern outdoor living*

Scottish granite in a contemporary interpretation – the famous port city high up in the north of Great Britain provided the inspiration for a real all-rounder for outdoor use. In the garden, on the terrace or in the outdoor kitchen – with ABERDEEN OUTDOOR20, life moves to the great outdoors.

Authentic and modern at the same time, these matt porcelain stoneware tiles with a slight relief effect, reveal the granite look of their natural role models, in three expressive colours. With two formats and individually crafted angled stair treads, private outdoor areas can be designed exactly to suit your taste in a minimalist, feel-good look.



Floor tiles: ABERDEEN OUTDOOR20 opal grey







BERNINA OUTDOOR20

– *For a safe footing*

Both natural and modern: it is a combination that allows BERNINA OUTDOOR20 to blend beautifully with numerous furnishing styles. The gentle glimmer of its surfaces is inspired by quartzite, giving it a stylish, natural appearance.

The 20 mm thick *vilbostone* porcelain stoneware tiles in the 60 x 60 cm format boast excellent R11/B slip resistance, meaning they are suitable for lending a touch of elegance and firm footing to outdoor areas as well.

These high-quality tiles are also equipped with **vilbostoneplus**, a surface finish applied at the factory that makes these slip-resistant tiles easy to care for right from the start.

BERNINA OUTDOOR20 is available in beige, grey and greige – three shades modelled on natural tones that harmonise well with a variety of environments.

Their 20 mm thickness makes these tiles perfect for carports and pavements, for example.











CÁDIZ OUTDOOR20

— *simple beauty with a natural look and feel*

Like magnificent extracts from Nature herself, CÁDIZ OUTDOOR20 tiles exude a fascinating aura of authenticity.

Available in the colours chalk multicolor, sand and grey multicolor, the range offers a contemporary new interpretation of country house style both indoors and out: A concept that is just as popular in urban environments as it is in rural areas.

The easy-care *vilbostone* porcelain stoneware range is available in the large square format 60 x 60 cm and the elegant rectangular format 40 x 80 cm.











GATEWAY OUTDOOR20

– For a work-life balance in the great outdoors!

Slate is a very special stone: millions of years old, and more contemporary than ever before.

GATEWAY OUTDOOR20 adapts the countless textures and plays of coloured slate in ceramic – perfect for attractive outdoor designs. The authentic look of slate develops its quiet, natural charm around the house just as expressively as it does in a modern office building – to provide the perfect setting for moments of relaxation and creative work.

With their subtle surface relief, these high-quality porcelain stoneware tiles create a fine, harmonious image with an effect that is close to nature and urban at the same time, in the strong colours of midnight black and manhattan grey.



HUDSON OUTDOOR20

– *A natural look, like fine sand*

A restrained natural design that enhances the entire outdoor area: HUDSON OUTDOOR20 made of *vilbostone* porcelain stoneware is a high-grade ceramic tile with the look of fine-grained sand. For a harmonious and appealing look outdoors, both inviting and expansive at the same time.

The restrained, finely composed surface provides an excellent basis for modern lifestyles.

HUDSON OUTDOOR20 in 60 x 60 cm makes for a functional link for terraces and balconies and harmonises stylishly with the versatile HUDSON concept for indoors.



Floor tiles: HUDSON OUTDOOR20 sand







MY EARTH OUTDOOR20

– *Design freedom*

No two stones on this Earth are exactly alike, and MY EARTH OUTDOOR20 was developed with this sense of uniqueness in mind. Each tile is a variation of a simple stone structure with a character all its own. The result: individual surface appearances that are able to fascinate time and again.

The range is practically predestined for use in large areas, such as those found between residential units. Easy-care *vilbostone* porcelain stoneware tiles are light-fast and retain their authentic look even when subjected to heavy use.

With its natural appearance, the range is used in both private and public areas. The colour variants light beige, beige, grey and anthracite, each in a multi-coloured version, are available – colours whose facets are ever-changing, and which even nature is unable to top.









OAK PARK OUTDOOR20

– *The charm of natural beauty*

Splendidly warm, wonderfully natural and yet robust and easy-care at the same time – that’s the kind of feel-good terrace one would want. With great attention to detail, the OAK PARK OUTDOOR20 range interprets fine-grained oak wood in high-quality porcelain stoneware. A gentle relief and four selected hues create a stunningly authentic wood look.

120 cm in length, these tiles are reminiscent of real wood planks – perfect for a floor that not only looks great but also offers the appealing benefits of ceramics, too. Thanks to **vilbostoneplus** surface sealing, it stays as beautiful as the first day – even when exposed to the elements. That’s because moisture and UV light can’t harm these tiles – in contrast to real wood.





TUCSON OUTDOOR20

– *A comfortable and natural-looking design*

Natural-looking designs have a powerful and irresistible attraction, particularly when the materials are authentic and the design radiates wellbeing.

The TUCSON OUTDOOR20 *vilbostone* porcelain stoneware has a rustic charm with warm accents to create a visually pleasing harmony between the exterior and interior.

The 60 x 60 cm and 80 x 80 cm tiles reflect the diverse structures and colours of natural stone – an attractive solution for imaginative designs in two light and two darker styles.



URBAN JUNGLE OUTDOOR20

– *Quiet minimalism in urban bustle*

Life is throbbing in the modern urban jungle. What a good feeling it is to shift down a gear and treat oneself to a break. Relaxed setting preferred – preferably outside! With its innovative design, the URBAN JUNGLE OUTDOOR20 range is designed with this in mind: A pure concrete look is enlivened with inclusions reminiscent of hand-crafted terrazzo. Depending on your taste, there are four gentle hues that create a cooler or warm atmosphere in the outdoor setting.

The matt finishes are fascinating for their fine feel. And the strong ceramic design lends these high-quality porcelain stoneware tiles a three-dimensional depth – they're practically made for trendy, feel-good locations in the urban world in which we live and work.



Floor tiles: URBAN JUNGLE OUTDOOR20 grey







X-PLANE OUTDOOR20

– *Modern minimalism in the open air*

Cement looks are all the rage – not only for wall and floor coverings, but for all manner of home accessories as well. With their puristic look and timelessly modern designs, they are true all-rounders for contemporary styles and are destined to establish a lasting presence in modern living spaces.

The finely structured surfaces of X-PLANE OUTDOOR20 offer a popular yet discreet urban look. Available in the colours beige, grey and anthracite, they are equally at home in architectural applications and private living areas.

The *vilbostone* porcelain stoneware tiles harmonise wonderfully with steel and concrete, and are also ideal as a modern counterpoint to all natural materials.

NOSING TILES

— *Elegant stair solutions made to measure*

Nosing tiles can be used to create both functional and aesthetic stairways for a wide variety of construction projects. They are individually made to order and tailored to the exact requirements of the site. In order to overcome fixed differences in height, the depth of the stair tread and height of the edging can be defined as required.

Nosing tiles are also impressive in terms of looks: because the steps appear to be a single block, the resulting staircase has a seamless, monolithic look. The prefabricated steps can also be used to edge a tiled area.



Floor tiles: ABERDEEN OUTDOOR20 opal grey





opal grey



R10 A

60 x 120 cm



60 x 60 cm



tobacco



R10 A

60 x 120 cm



60 x 60 cm



slate grey



R10 A

60 x 120 cm



60 x 60 cm

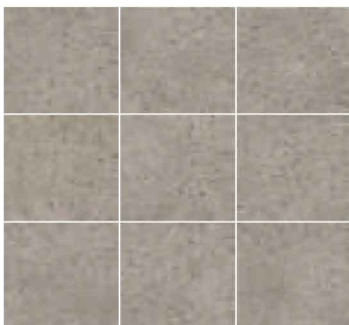


Shade variation

opal grey



tobacco



slate grey



* Matching nosing tile available on request



beige



R11 B

60 x 60 cm



greige



R11 B

60 x 60 cm



grey



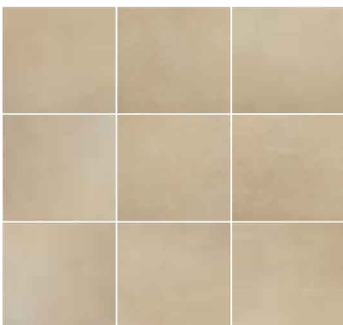
R11 B

60 x 60 cm



Shade variation

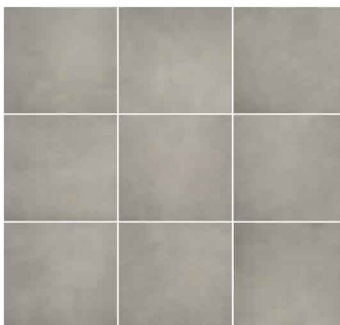
beige



greige



grey



* Matching nosing tile available on request



chalk multicolor



R11 B

40 x 80 cm



60 x 60 cm



sand



R11 B

40 x 80 cm



60 x 60 cm



grey multicolor



R11 B

40 x 80 cm



60 x 60 cm



Shade variation

chalk multicolor



sand



grey multicolor



* Matching nosing tile available on request



manhattan grey



R11 B

60 x 60 cm



midnight black



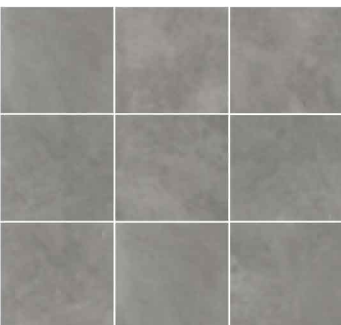
R11 B

60 x 60 cm

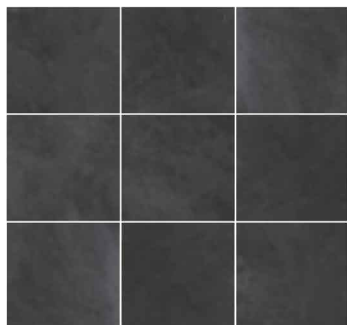


Shade variation

manhattan grey



midnight black



* Matching nosing tile available on request



white sand



R11 B

60 x 60 cm



sand



R11 B

60 x 60 cm



clay



R11 B

60 x 60 cm



volcano



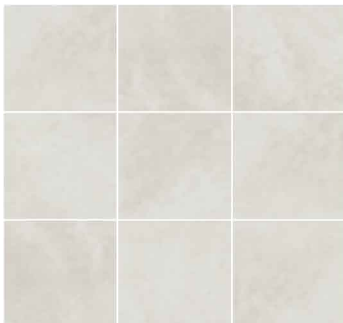
R11 B

60 x 60 cm



Shade variation

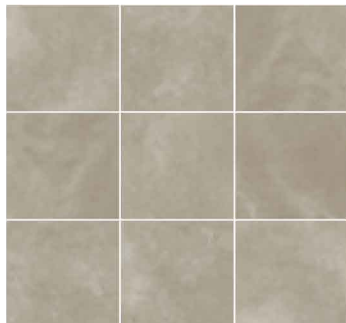
white sand



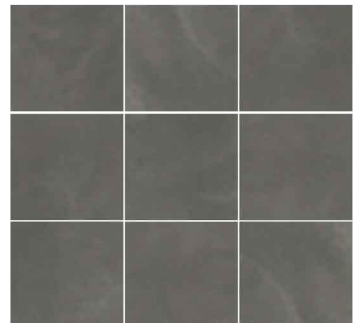
sand



clay



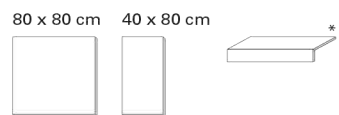
volcano



* Matching nosing tile available on request



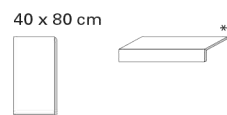
light beige multicolour



60 x 60 cm



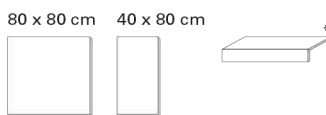
beige multicolour



60 x 60 cm



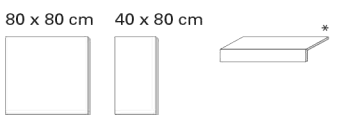
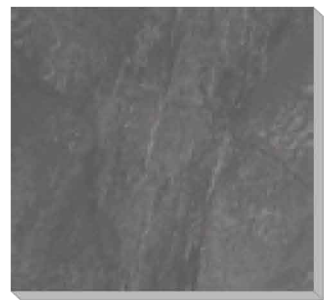
grey multicolour



60 x 60 cm



anthracite multicolour



60 x 60 cm

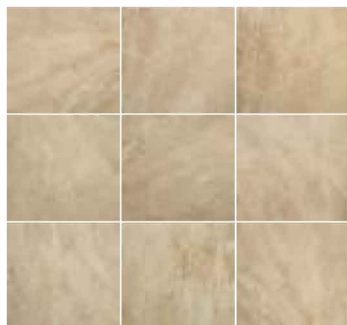


Shade variation

light beige multicolour



beige multicolour



grey multicolour



anthracite multicolour



* Matching nosing tile available on request



crema



R11 B

40 x 120 cm



chalet



R11 B

40 x 120 cm



brandy



R11 B

40 x 120 cm



cacao

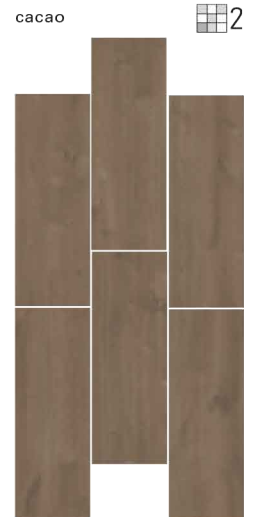


R11 B

40 x 120 cm



Shade variation



* Matching nosing tile available on request

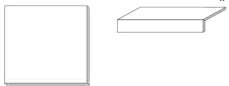


light rock



90° 20 R11 B

80 x 80 cm



60 x 60 cm



sunny rock



90° 20 R11 B

80 x 80 cm



60 x 60 cm

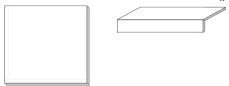


warm rock



90° 20 R11 B

80 x 80 cm



60 x 60 cm

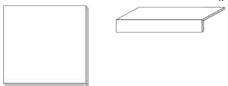


black rock



90° 20 R11 B

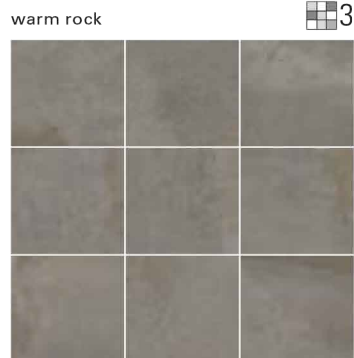
80 x 80 cm



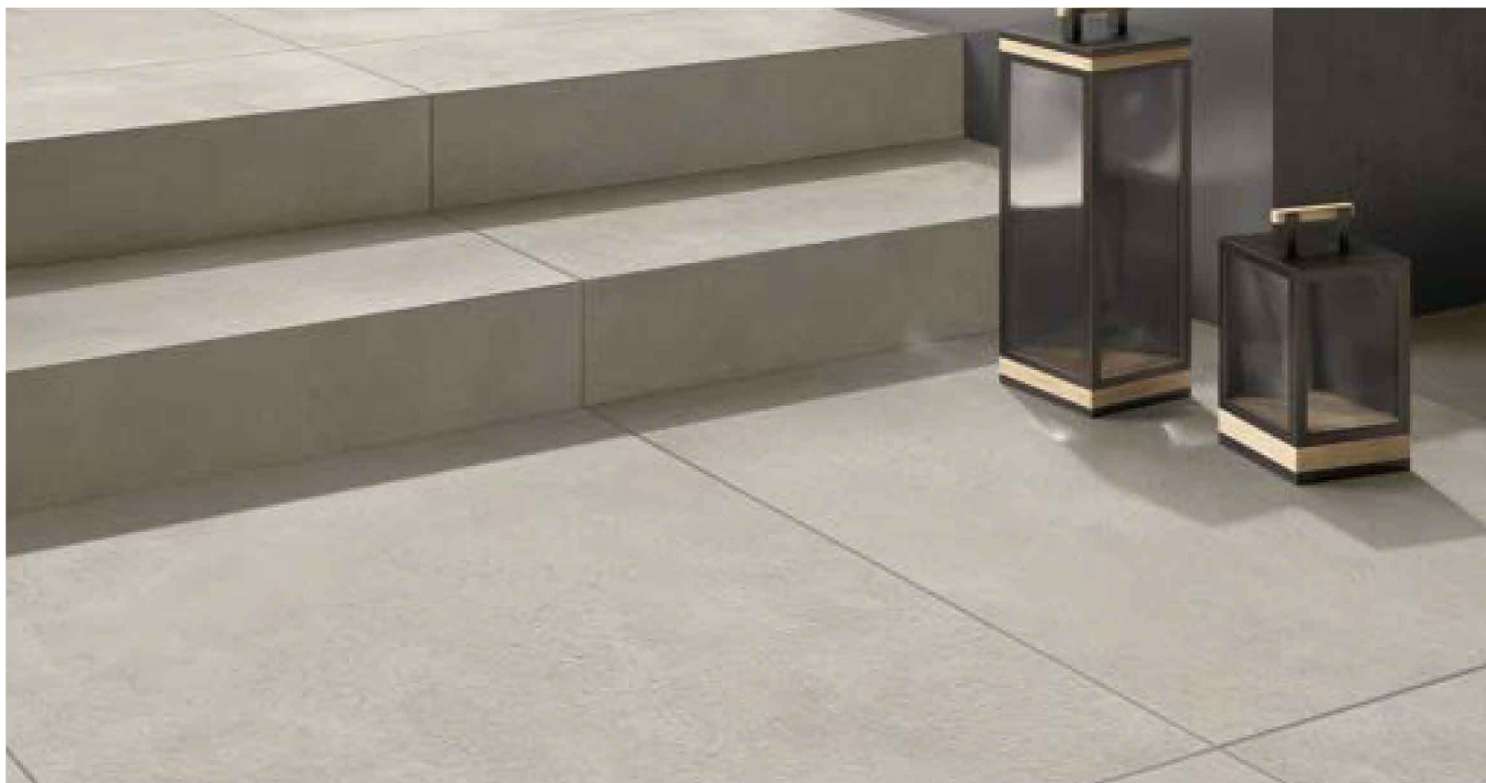
60 x 60 cm



Shade variation



* Matching nosing tile available on request



light grey



R11 B

80 x 80 cm



greige



R11 B

80 x 80 cm



grey



R11 B

80 x 80 cm



dark grey



R11 B

80 x 80 cm

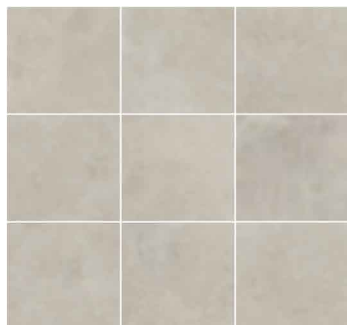


Shade variation

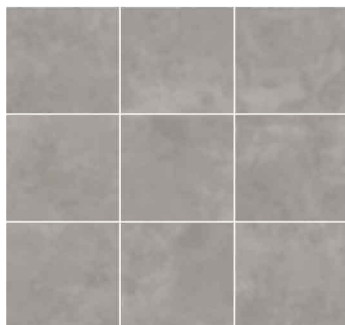
light grey



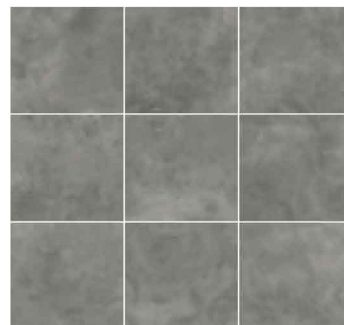
greige



grey



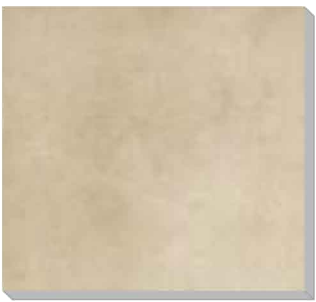
dark grey



* Matching nosing tile available on request



beige



R10 A

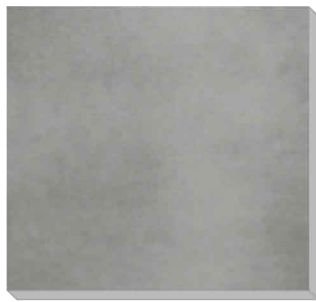
60 x 120 cm



60 x 60 cm



grey



R10 A

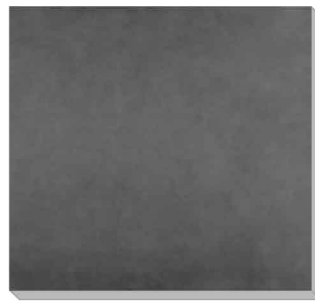
60 x 120 cm



60 x 60 cm



anthracite



R10 A

60 x 120 cm

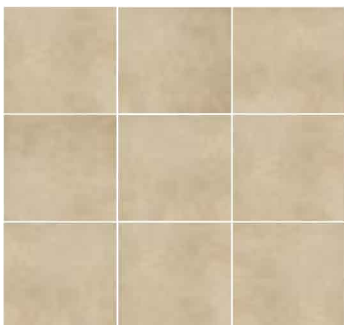


60 x 60 cm

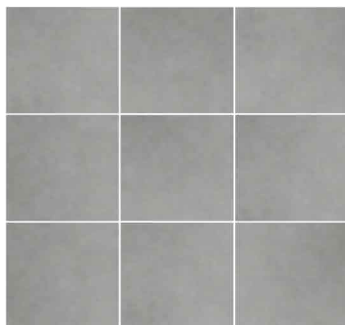


Shade variation

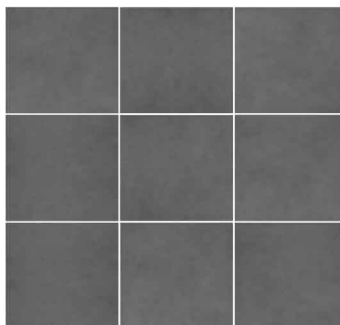
beige



grey

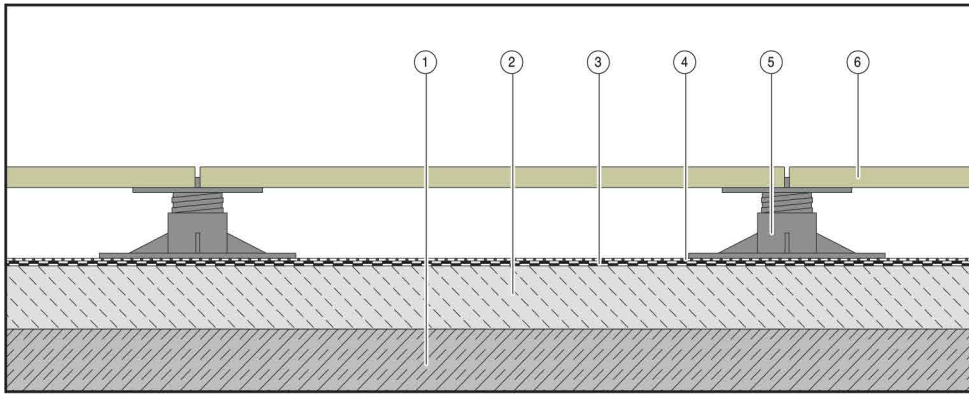


anthracite



* Matching nosing tile available on request

Laying on pile foundations or mortar bags



Loose laying on pile foundations or mortar bags on underground floor slab or concrete cantilever slab

- ① Uncovered floor
- ② Sloping screed
- ③ Seal in accordance with DIN 18531-5
- ④ Protective mat
- ⑤ Pile foundations / mortar bags
- ⑥ OUTDOOR TILES

Advantages:

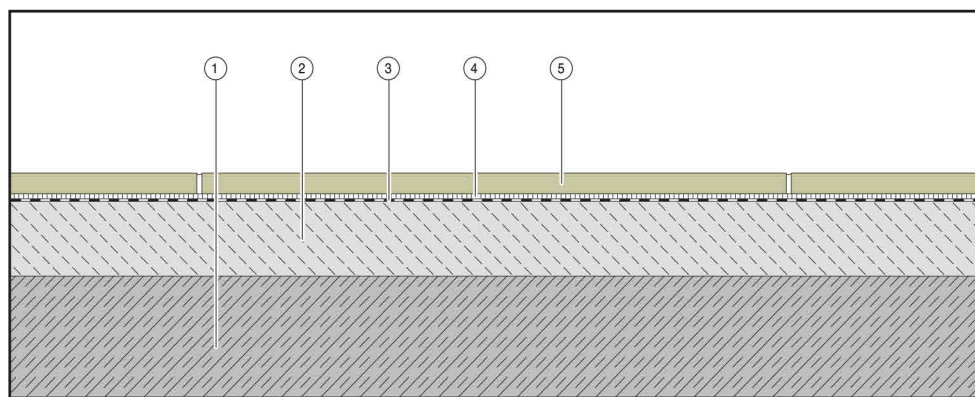
- Suitable for laying on top of existing coverings if the resulting overall height meets requirements
- Both laying variants can be performed quickly
- When laid on pile foundations or mortar bags, replacing individual OUTDOOR TILES is quite straightforward
- This also allows for the concealment of cables, pipes etc. under the structure

Laying the tiles:

- Prepare the substrate with a slope of at least 2% and seal in accordance with DIN 18531-5
- In order to protect against mechanical impairment, a protective mat should also be installed over the waterproofing
- A vapour barrier is required above heated rooms
- Place the pile foundations or mortar bags (with integrated spacers) or mortar bags in the desired grid and align horizontally
- Lay the OUTDOOR TILES by placing them around the spacers with approx. 5 mm wide joints
- If higher loads are expected, it is recommended that support also be provided beneath the centre of each tile



Laying on cement screed



Fixed laying in a mortar bed on underground floor slab or concrete cantilever slab

- ① Floor slab
- ② Sloping screed
- ③ Composite seal in acc. with DIN 18531-5
- ④ Mortar bed
- ⑤ OUTDOORTILES

Advantages:

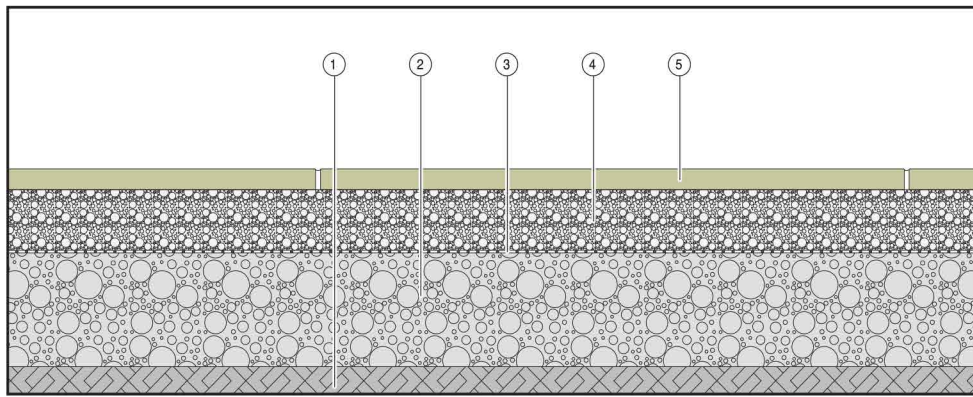
- Suitable for terraces and balconies with low overall heights
- Harmonises well with similar indoor floor coverings

Laying the tiles:

- Prepare the substrate with a slope of at least 2% and waterproofing in accordance with DIN 18531-5
- If necessary, apply an additional levelling coat in the event that the deviations in screed height are too great
- Lay the tiles with approx. 5 mm wide joints in a joint-coordinated pattern (cross joints) using a hydraulically setting thin-bed mortar (Group C2 S2)
- Carry out jointing with hydraulic hardening joint mortar
- The space between the settlement joints in a width of approx. 5 mm can, depending on the expected thermal expansion pursuant to the ZDB flyer, be between 2 and 5 m.



Laying on gravel beds as necessary with contact layer/Bonding course



Loose laying on gravel bed

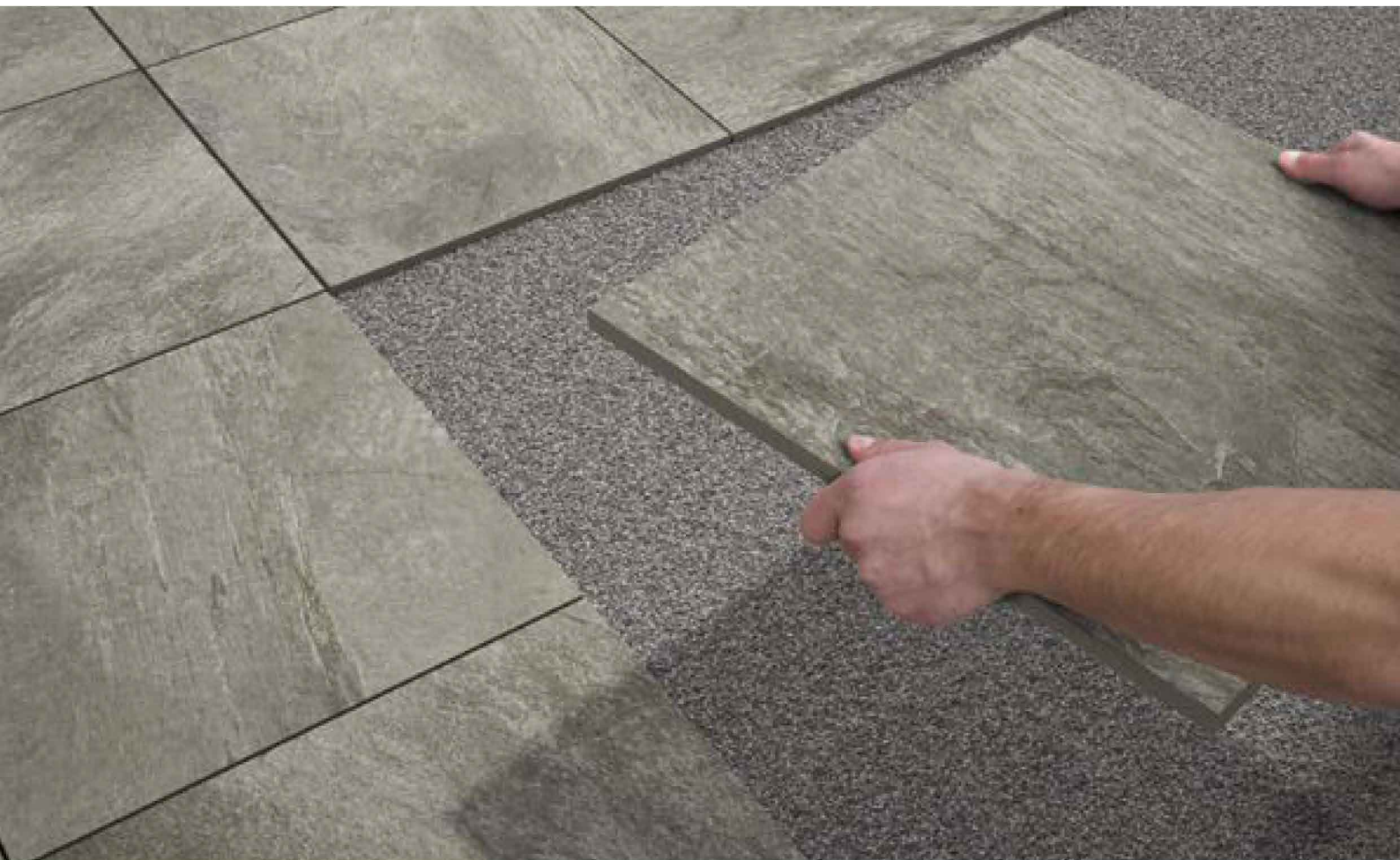
- ① Natural soil
- ② Rough gravel support
- ③ Water-permeable covering
- ④ Gravel bed as necessary with contact layer
- ⑤ OUTDOOR TILES

Advantages:

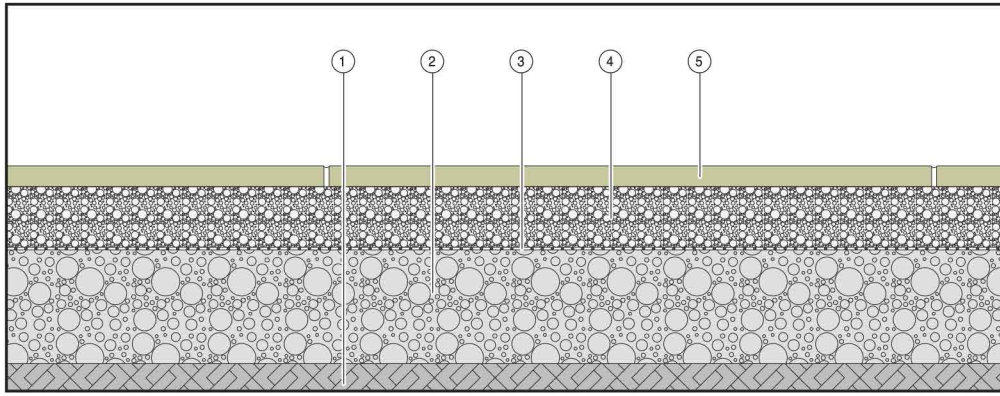
- Suitable for accessible ground-level terraces
- It is possible to simply lay the tiles on concrete slabs or base plates, or on natural, load-bearing substrates
- When laid on gravel beds, replacing individual tiles is quite straightforward

Laying on natural soil:

- The substrate must be sufficiently compacted
- The 20 - 40 cm thick mineral supporting layer, comprising mixed gravel, for example, should have a grain size of approx. 0/32 to 0/56 mm
- Application of a water-permeable covering is required
- Create a 3 - 5 cm thick gravel bed that is able to drain
- Lay the OUTDOOR TILES with approx. 5 mm wide joints. A bonding course should be applied to the back of the tiles to reduce subsequent shifting and tilting of the tiles.
- Fill joints with water-permeable joint sand
- Surface slope of at least 2%



Laying on drainage mortar with contact layer



Fixed laying on drainage mortar

- ① Natural soil
- ② Rough gravel support
- ③ Water-permeable covering
- ④ drainage mortar with contact layer
- ⑤ OUTDOOR TILES

Advantages:

- Suitable for accessible ground-level terraces
- It is possible to simply lay the tiles on concrete slabs or base plates, or on natural, load-bearing substrates

Laying on natural soil:

- The substrate must be sufficiently compacted
- The 20 - 40 cm thick mineral supporting layer, comprising mixed gravel, for example, should have a grain size of approx. 0/32 to 0/56 mm
- Application of a water-permeable covering is required
- Drainage mortar must be applied in a thickness of at least 5 cm and up to 10 cm, depending on the load
- A suitable contact layer must be applied to the back of the tiles during installation
- Lay the OUTDOOR TILES with approx. 5 mm wide joints
- Fill joints with water-permeable joint sand
- Surface slope of at least 2%

vilbostone unglazed porcelain stoneware in acc. with DIN EN 14411, Group BIa (Water Absorption E ≤ 0.5%)

Grouping: Table ZA.1.1 Outdoor floor covering



Characterization	Test according to DIN EN ISO	Requirements	Test result 40 x 80 cm	Test result 60 x 60 cm
Dimensions	10545-2	Compliance to the tolerances required	Passed	Passed
Surface quality	10545-2	min. 95 % free from visible defects	Passed	Passed
Water absorption % by weight	10545-3	≤ 0,5 / individual max. 0,6%	< 0,5	< 0,5
Modulus of rupture in N/mm ²	10545-4	min. 35 N / mm ² individual min. 32 N / mm ²	≥ 45	≥ 45
Breaking strength	10545-4	min. 700N (thickness <7,5 mm) min. 1.300N (thickness ≥7,5 mm)	≥ 25.500	≥ 25.000
Breaking load	10545-4	Declared value	≥ 11.000	≥ 25.000
Resistance of impact (Measurement of the rebound coefficient)	10545-5	Declared value	≥ 0,55	≥ 0,55
Resistance to deep abrasion	10545-6	max. 175 mm ³	≤ 145	≤ 145
Linear thermal expansion from ambient temperature to 100° C in K-1 :	10545-8	Declared value	Not tested	Not tested
Thermal shock resistance	10545-9	Declared value	Not tested	Not tested
Moisture expansion in mm/m	10545-10	Declared value	Not tested	Not tested
Frost resistance	10545-12	Required	Passed	Passed
Resistance to household chemicals and swimming pool salts	10545-13	min. class B	A	A
Resistance to acids and alkalics - low concentration	10545-13	Declared value	LA	LA
Resistance to acids and alkalics - high concentration	10545-13	Declared value	HA	HA
Resistance to staining	10545-14	min. class 3	Class 5	Class 5
Release of lead and cadmium	10545-15	Declared value	Not tested	Not tested
Minor differences in colour	10545-16	ΔEcmc < 1.0	Not tested	Not tested
Determination of slip-resistance – commercial area	CEN/TS 16165	Declared value	R11	R10, R11
Determination of slip-resistance – barefoot area	CEN/TS 16165	Declared value	B	A, B

CLEANING AND CARE

General

On account of their properties, tiles are considered to be easy to clean. The cleaning methods and cleaning agents must, however, be adapted to the type of floor and local conditions.

It should be noted that hydrofluoric acid and related substances are able to attack or destroy the surface of porcelain stoneware tiles.

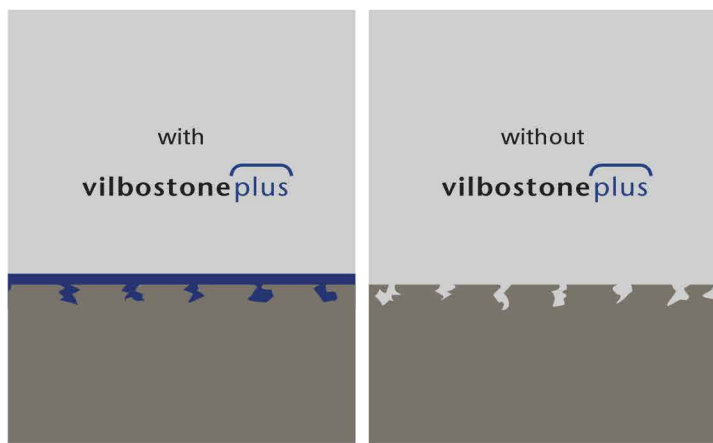
Consequently, no cleaning agents containing hydrofluoric acid are to be used!

vilbostone

Porcelain stoneware

vilbostone porcelain stoneware permits a wealth of different surface designs featuring unusual colour and sheen effects.

vilbostone porcelain stoneware is available both glazed and unglazed, with a matt, polished, rough-polished or relief surface finish and in various classes of slip resistance.



vilbostoneplus

Unglazed *vilbostone* porcelain stoneware with a matt or rough-polished surface finish have the **vilbostoneplus** seal, which renders the tiles particularly resistant to dirt and stains. During the manufacturing process, the structure of the tile surface is sealed in order to further increase the tiles' resistance to staining and dirt, as a result of which subsequent treatment with impregnating agents is no longer necessary.

Cleaning

Final cleaning after tiling / Basic cleaning	Product and dosage	Cleaning equipment
Loose dirt	-	Broom and vacuum cleaner
Cement film, mineral soiling, such as limescale deposits, soap residue	Acidic cleaner (available from specialist retailers)	Sponge, scrubbing brush, brush, cloth, microfibre cloth
Grease, oils, waxes, cosmetics, shoe marks	Alkaline cleaner (available from specialist retailers)	Sponge, scrubbing brush, brush, cloth, microfibre cloth
Routine cleaning		
Normal dirt, such as dust, light dirt, street dirt	Neutral cleaning agents (available from specialist retailers)	Broom and vacuum cleaner Sponge, scrubbing brush, brush, cloth, microfibre cloth

Please note: All of the information we provide about cleaning, care and removing stains from ceramic tiles is based on the latest knowledge and material research. It is, however, of a general nature and cannot cover every single eventuality. Therefore, please observe the instructions provided by the cleaning agent manufacturer.

Slip resistance of floor tiles

The EU Construction Products Regulation No. 305/2011 requires floor coverings to be safe to use. This imposes the observance of special requirements pertaining to slip resistance in areas where a danger of accidents is to be assumed. The corresponding standards were drawn up by the Committee for workplaces (ASTA) and published in form of technical regulations.


These standards include requirements pertaining to slip resistance - leaflet "ASR A1.5/1,2 - Technical Regulations for workplaces - Floors" (previously BGR 181 for commercial areas) and, for barefoot areas, leaflet "DGUV Information 207-006 - Floor coverings for wet barefoot areas" (previously BGI/GUV-I 8527, updated June 2015), published by the German Statutory Accident Insurance (DGUV).

Slip-resistant coverings in publicly accessible areas are distinguished according to those that are walked over barefoot or in footwear. No regulations apply as yet in the area of private use, e.g. private bathrooms or kitchens.

The requirements stipulated by the slip resistance are defined in the regulations mentioned below.

With our slip-resistant tiles, you will find the symbols

 slip resistance in commercial areas,

 slip resistance in barefoot areas

and information about the relevant classification groups.

Slip-resistance properties in commercial applications

Responsible institutions:

Federal Institute for Occupational Health and Safety,
Friedrich-Henkel-Weg 1-25, D-44149 Dortmund -
www.baua.de

Main Association of Employers' Liability Insurance
Associations, Alte Heerstraße 111, D-53757 Sankt
Augustin - www.dguv.de

Area of application:

Floors in work rooms and work areas where there is a risk of slipping

Regulations:

„BGV Professional Association regulations for occupational safety and health“ (Published by: Main Association of Employers' Liability Insurance Associations) Leaflet „ASR A1.5/1,2 - Technical Regulations for workplaces - Floors“ (Published by: Federal Institute for Occupational Health and Safety, Committee for workplaces - ASTA)

Test method:

DIN 51130 – Testing of floor coverings; determination of slip resistance; work rooms and work areas subject to higher risk of slipping.

Walking method:

inclined plane

Assessment groups:

	angle of inclination	
	Lower limit value	Upper limit value
R9	6°	10°
R10	> 10°	19°
R11	> 19°	27°
R12	> 27°	35°
R13	> 35°	



R9: 6° – 10° **R10:** 10° – 19° **R11:** 19° – 27° **R12:** 27° – 35° **R13:** > 35°

The slip resistance of tiles is tested on an inclined plane with a predetermined angle of inclination and classified according to rating groups R9 to R13.

SLIP RESISTANCE

Slip-resistance properties in barefoot areas

Responsible institutions:

German Statutory Accident Insurance (DGUV),
Glinkastraße 40, D-10117 Berlin - www.dguv.de

Area of application:

Wet barefoot areas, e.g. in swimming pools, hospitals, as well as changing rooms, washrooms and showers in sports centres and workplaces for which the statutory accident insurance agencies are responsible.

Regulations:

Leaflet „DGUV Information 207-006 - Floor coverings for wet barefoot areas“ (previously BGI GUV-I 8527, updated version of June 2015)

Published by: German Statutory Accident Insurance (DGUV)

Test method:

DIN 51097; Testing of floor coverings; determination of slip-resistance; barefoot areas exposed to wet.




Walking method:

sloping plane

The slip resistance of tiles is tested on an inclined plane with a predetermined angle of inclination and classified according to rating groups A to C.

If barefoot areas are also to be walked over in footwear, the requirements of ASR A1.5/1.2 must also be observed.

Classification groups and areas of application:

Classification group	Lower limit value	Upper limit value	Areas
 A	12°	18°	Barefoot hallways and sanitary areas (mainly dry) Individual and group changing rooms with lockers Pool floors in the non-swimmer areas, where the water level exceeds 80 cm Sauna and relaxation areas (mainly dry)
 B	> 18°	24°	barefoot hallways and sanitary areas, if not classified in A Showers and shower areas Steam baths Area surrounding the disinfectant sprayers Pool surrounds Pool floor in the non-swimmer areas, where the water level is less than 80 cm Pool floor in the non-swimmer areas in the tide effect pool Lift slab floors Paddling pools Steps and ladders outside the pool area provided these are not assigned to C Accessible surfaces of diving platforms and diving board installations which are not allocated to C. Sauna and relaxation area, provided they are not assigned to A
 C	> 24°		Steps and ladders leading into the water Stairways leading to diving boards and water slides Surfaces of diving platforms and diving boards in the length which is reserved for the diver (the slip-resistant surface of the diving platforms and diving boards must lead around the front edge where it is gripped by users' hands and toes). Foot basins Inclined pool borders Kneipp pool, foot pool Ramps in the pool rim area with an inclination of > 6%

Tiles by Villeroy & Boch meet every aspect of the international parameters required for “sustainable building”.

All over the world, our tiles feature in architectural projects that are classified by the German DGNB, and in accordance with the American LEED and the British BREEAM. The closed manufacturing processes that include both traditional and state-of-the-art technologies, such as digital print, meet the very highest environmental standards. All raw materials used in the ceramic mass, glazes and pastes, as well as for packaging the tiles, are evaluated according to strict ecological principles.

The entire manufacturing process avoids emissions into the water, soil and air that would have a detrimental effect on the environment. Heat recovery and continuous energy-efficiency measures, as well as environmentally aware waste management, are testimony to the environmental

compatibility of our production. At least 85% of the waste produced is recycled. The waste water generated by the manufacturing process and the solids it contains are almost entirely re-used. Thanks to heat recovery, CO₂-emissions can be reduced by about 3000 tons per year.

Not only manufacturing considerations but also the lasting quality of the designs of our tiles earn them the “sustainable building” accolade at international level. Both manufacture and the products themselves are continuously assessed in accordance with the latest independent system and product certifications.

For further information about projects and certifications, as well as videos and brochures about our environmental management, please go to www.respecting-nature.com

Certification - DIN EN ISO 9001

The DIN EN ISO 9001 quality management system has been documenting the ongoing optimisation of work processes throughout the company since 1995.

Certification - DIN EN ISO 14001

Based on the plan-do-check-act cycle and ongoing improvement in environmental performance, DIN EN ISO 14001 specifies the main requirements for identification, monitoring and supervision of direct and indirect environmental aspects in the company.

All certifications are carried out by Bureau Veritas.



EMAS validation

V & B Fliesen GmbH was the first German tile manufacturer to participate in the EMAS (Eco-Management and Audit Scheme), currently the strictest test system for environmental criteria, at Merzig and La Ferté-Gaucher. It calls for a continuous, performance-oriented and regularly measurable optimisation process in which employees must also be involved.

In 2016, V & B Fliesen GmbH was certified for another three years by an external environmental auditor.

CE mark

The CE mark indicates that the product complies with the requirements of the corresponding EU directive – in particular with regard to health protection and the safety of users and consumers – and may thus be freely circulated on the Community market.

At www.villeroy-boch.com/ce you will find information on compliance with requirements for the CE mark by porcelain stoneware, glazed vitreous and nonvitreous products from Villeroy & Boch Tiles.

Ecological, environmentally friendly production

V & B Fliesen GmbH has been awarded the Environmental Product Declaration (EPD) label by the IBU (Institut für Bauen und Umwelt e.V.). The Environmental Product Declaration provides relevant, verifiable and comparable information on the environmental impact of products. This certification allows architects and planners to utilise our products in all properties that have been certified as satisfying the BREEAM, LEED, DGNB or other comparable international requirements for sustainable building. The IBU, as the administrator of the German EPD program, is part of the ECO PLATFORM, through which it works to promote the harmonisation of national EPD programmes at the European level.

Declaration of Performance in accordance with the Construction Products Regulation [BauPVO]

305/2011 (EU) dated 9 March 2011:

The Declaration of Performance specifies the characteristics that are applicable in accordance with the product standard DIN EN 14411 for which our compliance is obligatory. In our company this applies to the following product groups:

- Porcelain stoneware (Group BIa)
- Vitreous stoneware (Group BIb)
- Nonvitreous stoneware (Group BIII)

This can be viewed and downloaded from our homepage at www.villeroy-boch.com/pvo.



*Rotensteiner Weg
D-66663 Merzig
E-Mail: info@vb-fliesen.com*

9108-WIB4-00-10 · 03/2019

Shades and dimensions subject to the usual tolerances. We reserve the right to make technical modifications to the range and alter colours.

ambiente

EUROPEAN TILE DESIGN

400 East Pine Street, Suite 210
Seattle, WA 98122

206-524-2113
ambientetile.com

