



Villeroy & Boch

1748

Loving &
Living Tiles

Inhalt

Contents

URBAN JUNGLE	6
ATLANTA	10
WORKSHOP	14
LIGHTPLAY	18
METRO FLAIR	22
BELLAGIO	28
GATEWAY	32
OAK PARK	36
ABERDEEN	40
Produktübersichten <i>Overview of Products</i>	45

Die Welt ist voller Inspirationen! Wer etwas Neues schaffen möchte, muss nur offen sein für das, was um ihn herum geschieht – und seine Eindrücke kreativ weiterentwickeln. Die wunderbarsten Formen, Oberflächen und Farben findet man in der Natur. Und Kunst, Mode und Architektur bilden ab, wie der Mensch seine Lebenswelt formt.

Die Welt ist voller Inspirationen!
The world is full of inspiration!

The world is full of inspiration! If you want to create something new, you just have to be open to what is happening all around you – and then develop these impressions in an original way. The most wonderful shapes, surfaces and colours are to be found in nature. And art, fashion and architecture reflect how people shape their world.

Loving & Living Tiles

In der Fliesenkollektion 2019 kommen beide Aspekte zusammen: Die neuen Designs, Dekore, Oberflächen und Formate stehen für die große Vielfalt, die das moderne Leben ausmacht, und interpretieren die Themen Beton, Naturstein, Holz und Farbe in Keramik. Das Ergebnis sind durchdachte Fliesenserien, die begeistern und inspirieren, Räume zu gestalten, in denen man gerne lebt – ganz individuell und voller Emotionen.

Denn Fliesen von Villeroy & Boch sind mehr als schöne Wand- und Bodenbeläge. In jedem einzelnen Schritt, vom Design über die Produktion bis hin zur Vermarktung, stecken ganz viel Herzblut und Liebe. Das kann man spüren, und genau darum lautet das Credo: Loving & Living Tiles.

Both aspects come together in the 2019 tile collection: The new designs, décors, finishes and formats represent the great diversity that characterises modern life and interpret the themes of concrete, natural stone, wood and colour in ceramics. The result: sophisticated tile ranges which capture the imagination and inspire the creation of rooms in which people like to live - completely individual and full of emotion.

Because Villeroy & Boch tiles are more than just beautiful wall and floor coverings. At every single stage, from the design to production and right through to the marketing, you will find a passion and love for what we do. You can sense it, and that's exactly why our philosophy is: Loving & Living Tiles.



Leben am Puls der Zeit
Living with the latest trends



Ein Refugium für Körper, Geist und Seele – im pulsierenden Stadtleben ist das für viele ein Sehnsuchtsort. Warum sich nicht inmitten des Großstadtschungels eine grüne Oase der Ruhe schaffen? In der eigenen Lebens- oder Arbeitswelt.

Das faszinierende Wand- und Bodenkonzept URBAN JUNGLE ist dafür wie gemacht: Ein starker Beton-Look in sanften Naturtönen, belebt mit Einschlüssen, die an handwerklichen Terrazzo erinnern. Und dazu eine raffinierte Dekoration mit üppigen, exotischen Pflanzen und schimmernder Glanz in ruhigem Grün – so geht Wellness.

URBAN JUNGLE

Willkommen in der grünen Oase

Welcome to an oasis of green

A refuge for body, mind and soul - this is what many are looking for to escape from throbbing city life. Why not create a green oasis of peace in the middle of the urban jungle? In your own living or working environment.

The fascinating URBAN JUNGLE wall and floor concept has the answer: A bold concrete look in soft natural tones, animated with inclusions reminiscent of handcrafted terrazzo. Plus a sophisticated décor featuring lush, exotic plants and a shimmering shine in calm green - that's how wellness works.





Entspannung pur in den eigenen vier Wänden. Das dezente Dekor mit feinen Matt-Glanz-Effekten erzeugt eine herrlich entspannende Atmosphäre in jedem Raum.

Pure relaxation within your own four walls. The discreet décor with its fine matt-gloss effects creates a wonderfully relaxing atmosphere in any room.





Einfach, klar und faszinierend: Beton – eine Optik, die aus modernen Einrichtungen nicht mehr wegzudenken ist. Keramikfliesen, die typische Betonstrukturen adaptieren, sind daher perfekt für urban-puristische Interior Designs. So wie das Wand- und Bodenkonzept ATLANTA in einem reduzierten Betonlook mit Abnutzungsspuren.

Vom kleinen Mosaik bis zum aktuellen Großformat, in starken Farben für kühle oder warme Farbwelten, die man auch individuell mixen und kombinieren kann – das eröffnet jede Menge Gestaltungsfreiräume.

ATLANTA

Puristische Betonoptik in angesagtem Used-Look

Purist concrete effect in the popular used-look

Plain and simple, yet fascinating: Concrete – a look that has become an integral feature of modern furnishings. Ceramic tiles that adapt a structure typical of concrete are therefore perfect for urban-purist interior design. Such as the new ATLANTA wall and floor concept in a minimalist look of concrete with authentic traces of wear.

From small mosaics to the current large format tiles, in bold colours for both cool and warm colour schemes, and which can also be individually mixed and combined – there is plenty of scope for creative design.





Bodenfliesen · Floor tiles: ATLANTA dark coffee

Was passiert, wenn Arbeiter in schweren Schuhen tagein tagaus Baumaterial über rustikale Baustellenbohlen tragen und Maschinen darüber schieben? Sie hinterlassen deutlich sichtbare Spuren. Diesen authentischen Look greift die Serie WORKSHOP auf und interpretiert Beton einmal ganz anders – extravagant und zeitgemäß im Sinne des angesagten Industrial Style.

Die Bodenfliesen reizen das Spiel mit Kontrasten in einer einzigartigen Farbe effektiv aus. Das Spektrum reicht von warmer Rostoptik über stahlgraue und anthrazitfarbene Betontöne bis hin zu cremigen und braunen Elementen. Wunderschön sanft dazu: Helle Wandfliesen und eine klassisch anmutende Reliefdekoration.

WORKSHOP

Extravaganz im Industrial Style

Extravagance in industrial style

What happens when workers in heavy shoes carry building materials over rustic construction site planks and push machines over them day in, day out? They leave clearly visible traces of wear. The WORKSHOP range takes up this authentic look and interprets the concrete in a completely different way - extravagant and contemporary - to reflect the popular industrial style.

The floor tiles emphasise the play of contrasts in a single colour to great effect. The spectrum ranges from a warm rust look to steely-grey and anthracite-coloured concrete shades to creamy and brown elements. And to complete the picture: Light wall tiles and a classic-looking relief décor.



Die Faszination von Farbe

The fascination of colour





Die Farbe ist zurück! Neben Weiß, Grau und Creme halten wieder ausdrucksvolle Töne Einzug in die Inneneinrichtung. Besonders angesagt: unifarbene Wände, glatt oder fein strukturiert in trendstarker Farbigkeit.

Da kommt das Farbkonzept LIGHTPLAY mit seinen ausgesuchten Farbnuancen genau richtig. Besonderes Highlight: die neue, steinmatte Oberfläche PowderTouch. Sie betont die edle Anmutung der sieben pudrig-sanften Töne, die harmonisch aufeinander abgestimmt sind. Und für zusätzliche Wow-Effekte an der Wand sorgen eine Dekoration mit Textilstruktur und extra-schmale Metallleisten.

LIGHTPLAY

Sanfte Farbtöne treffen samtige Oberflächen
Soft colours and velvety surfaces

Colour is back! In addition to white, grey and creme, expressive shades are once again finding their way into interior design. One-colour walls are currently particularly „en vogue“, smooth or finely structured in trendy colours.

And this is where the LIGHTPLAY colour concept with its subtle colour nuances really comes into its own. The new, stone matt surface PowderTouch is a special highlight. It emphasises the elegant appearance of the seven powdery, soft tones, which coordinate harmoniously. Additional stunning effects are provided on the walls by a décor with textile structure and extra-narrow metal strips.









Wer schon einmal mit der Pariser U-Bahn gefahren ist, kennt die weißen Kacheln, die seit dem Bau der berühmten Metro zu Beginn des 20. Jahrhunderts in den Gängen und Bahnhöfen verlegt sind. Längst haben die berühmten Metro-Fliesen mit der typischen Facette den Untergrund verlassen und sind zu regelrechten Stil-Ikonen im Interior Design aufgestiegen.

Das Wandkonzept METRO FLAIR aus Facettenfliesen in drei Formaten und acht modernen Farben bringt urbanes Flair in die eigenen vier Wände und sorgt mit zahlreichen Kombinationsmöglichkeiten für ein neues, frisches Wohnerlebnis.

METRO FLAIR

Stil-Ikonen mit urbanem Retro-Charme

Icons of style with an urban retro charm

Anyone who has ever travelled on the Paris underground is familiar with the white tiles that were laid in the passageways and stations when the famous Métro was built at the beginning of the 20th century. The renowned Métro tiles with their characteristic facets have long since left the underground and become icons of style in interior design.

The METRO FLAIR wall concept with faceted tiles in three formats and eight modern colours brings urban flair to your own four walls and provides a new, fresh living experience with numerous combination options.

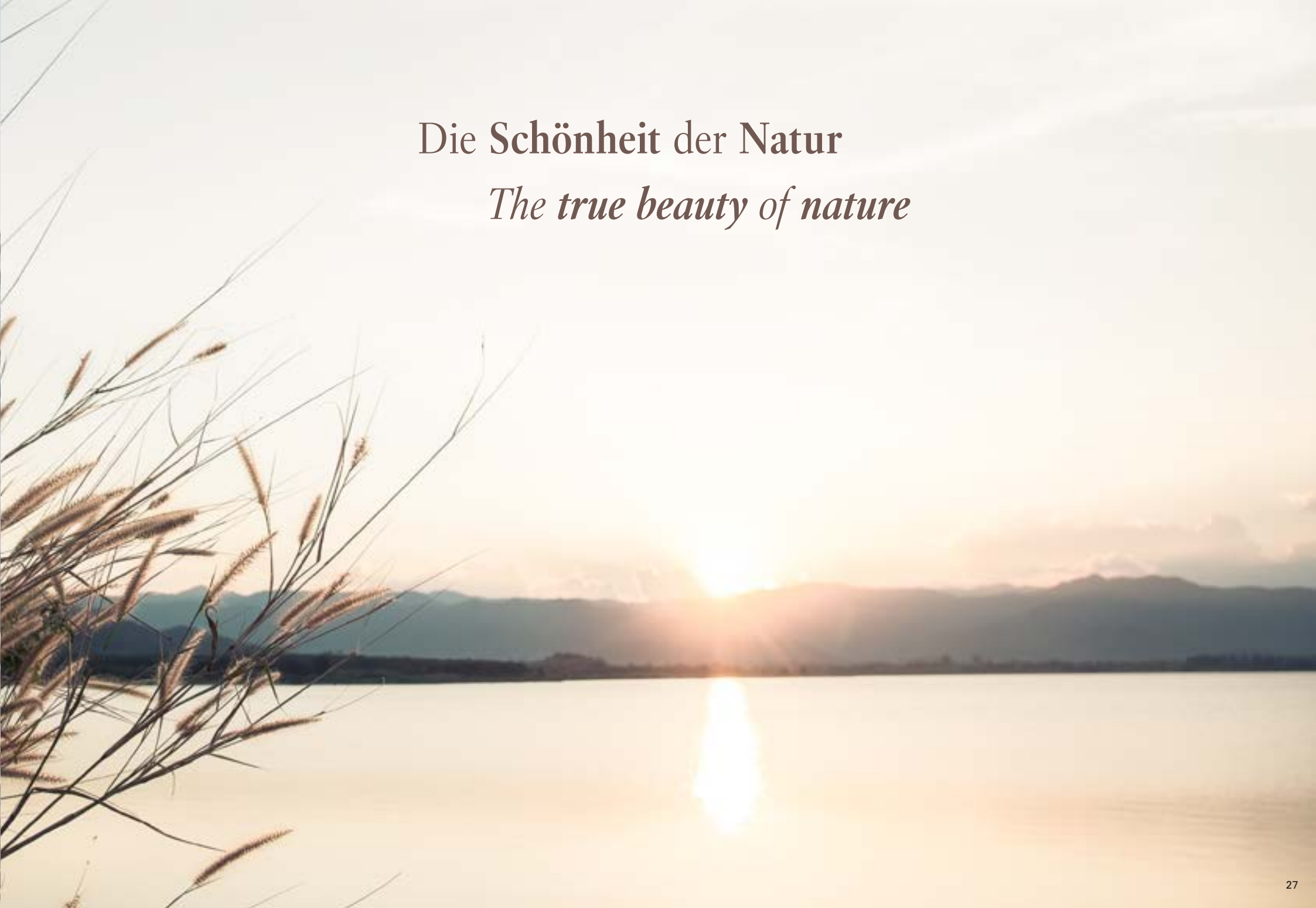






Die Schönheit der Natur

The true beauty of nature



Vom besonderen Charme der norditalienischen Landschaft rund um den Comer See erzählt die Fliesenserie BELLAGIO. Das Design ist eine neuartige Steininterpretation, die natürliche Ursprünglichkeit mit trendstarken Aspekten belebt: Marmor trifft Terrazzo – eine einzigartige Kombination, die es so in der Natur nicht gibt. Und die deshalb so fasziniert.

Die feine Marmoroptik erhält durch die dezenten Einschlüsse, die wie Terrazzo aussehen, einen überraschenden und zugleich ausgesprochen modernen Look. Damit ist das Wand- und Bodenkonzept wie gemacht für puristische Interieurs und auch im klassischen Ambiente wunderschön.

BELLAGIO

Marmor trifft Terrazzo

Marble meets terrazzo

The BELLAGIO tile range tells of the special charm of the northern Italian landscape around Lake Como. The design is a fresh interpretation of natural stone, which enlivens natural originality with trend-setting aspects: Marmor meets terrazzo – a unique combination that cannot be found in nature. And which is therefore so fascinating.

Discreet inclusions reminiscent of terrazzo give the fine marble touch a decidedly modern appeal. This wall and floor concept is therefore ideal for purist interiors and also a wonderful choice for a classic setting.







Bodenfliesen · Floor tiles: BELLAGIO shadow | **Wandfliesen** · Wall tiles: BELLAGIO light shadow

Natursteinoptiken sind zeitlos-modern – ideal für Gestaltungen, die lange schön bleiben und ihren besonderen Reiz behalten sollen. Immer aktuell ist Schiefer, der in seinen vielen Gesteinslagen immer wieder neue Muster, Strukturen und Farben zeigt – entstanden vor Millionen Jahren durch die Oxidation verschiedener Metalle zwischen den Schichten.

Das Feinsteinzeugkonzept GATEWAY überträgt die raue Struktur von Schiefer in ein dezentes Relief, das die typischen Schichtungen sanft abbildet. So entsteht ein sehr feines Oberflächenbild, das in der Fläche besonders schön wirkt. Überraschender Aspekt: Neben drei naturnahen Farben gibt es einen hellen Ton, den man bei Schiefer so nicht erwartet.

GATEWAY

Dezente Schieferoptik in ausdrucksvollen Farben
Subtle slate look in expressive colours

The natural stone look is timelessly modern – ideal for designs that are to remain beautiful for a long time and retain a special charm. Slate is always up-to-date, displaying continuously changing patterns, structures and colours in the many layers of rock – formed millions of years ago by the oxidation of various metals between the different layers.

The GATEWAY porcelain stoneware concept interprets the rough texture of slate and transposes it to a subtle relief which softly represents the strata typical of slate. This creates a very fine finish and a particularly beautiful effect over a large surface. Surprising feature: In addition to the three natural colours there is also a light shade one would not expect to find in slate.







Bodenfliesen · Floor tiles: GATEWAY OUTDOOR manhattan grey



Holz bringt natürliches Flair in jeden Raum. Darum sind auch Fliesen mit hochwertiger Holzoptik so beliebt: Sie sehen nicht nur wunderbar authentisch aus, sondern fühlen sich sogar an wie echtes Holz.

Das Feinsteinzeugkonzept OAK PARK besitzt die ruhige Anmutung von Eichenholz, fein gemasert mit sanften Verläufen und einem leichten Relief. Farben und Formate betonen den natürlichen Charme: Sechs Holzfarben mit authentischen Schattierungen in drei typischen Dielenformaten sind perfekt für harmonische oder lebendige Beläge drinnen und draußen.

OAK PARK

Die ruhige **Anmutung** von **Eiche**

The calming charm of oak

Wood brings natural flair to any room. That's why tiles with a high-quality wood look are so popular: Not only do they look beautifully authentic they even feel like real wood.

The OAK PARK porcelain stoneware concept introduces the calming charm of oak wood, fine-grained with gentle gradients and a slight relief. The colours and formats emphasise the natural charm: Six wood tones that feature authentic shading in three typical plank formats are perfect for harmonious or lively coverings indoors and out.







Eine Stadt wie eine Landschaft aus Granit: Aberdeen, die abgelegene Hafenstadt hoch oben im Nordosten Schottlands. Historische Gebäude aus silbergrauen Steinen prägen das Stadtbild und sind Inspiration für das Design der Wand- und Bodenserie ABERDEEN.

Naturstein zeitgemäß interpretiert: Eine matte Granitoptik am Boden wird mit einer dezenten Steinanmutung mit feinen Glanz-Effekten an der Wand kombiniert. Ausdrucksvolle Farben und sanfte Reliefs machen das detailreiche Design authentisch und neu zugleich. Perfekt für Wände und Böden in puristischen oder rustikalen Einrichtungen.

ABERDEEN

Inspiziert vom silbergrauen Granit Schottlands

Inspired by the silver-grey granite of Scotland

A city with the air of a landscape made of granite: Aberdeen, the remote port city in the far north-east of Scotland. Historical buildings made of silver-grey stones characterise the cityscape and are the inspiration for the design of the ABERDEEN tile range for walls and floors.

A contemporary interpretation of natural stone: A matt granite look for the floor is combined with a discreet stone look with fine gloss effects for walls. Expressive colours and a delicate relief effect ensure that the detailed design is both new and authentic at the same time. Simply perfect for walls and floors in purist or rustic interiors.





Bodenfliesen · Floor tiles: ABERDEEN slate grey

Loving &
Living Tiles

Produktübersichten

Overview of Products

ABERDEEN	46
ATLANTA	49
BELLAGIO	52
GATEWAY	54
LIGHTPLAY	56
METRO FLAIR	57
OAK PARK	58
URBAN JUNGLE	60
WORKSHOP	63

Grundfliesen aus Steingut (nur für die Wand geeignet)
Nonvitreous basic tiles (suitable for walls only)

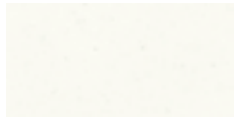
vilbostone^{plus} **vilbostone**
Feinsteinzeug · Porcelain stoneware

Art. 1733 · 33 x 100 cm
 white pearl



SB00

Art. 1581 · 30 x 60 cm
 white pearl



SB00

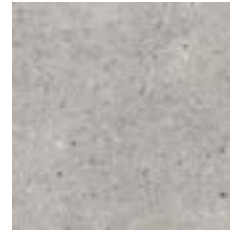
Grundfliesen aus Feinsteinzeug (für Wand und Boden geeignet)
Porcelain stoneware basic tiles (suitable for walls and floors)

Art. 2577 · 60 x 60 cm
 pearl



SB10

opal grey



SB60

tobacco



SB70

slate grey



SB90

30 x 60 cm



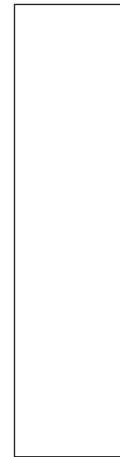
Art. 2576 Art. 2526 ¹⁾
 SB10 · SB60 SB1R · SB6R
 SB70 · SB90 SB7R · SB9R
 Art. 2685 ¹⁾ Art. 2536 ¹⁾

Art. 2987
 60 x 120 cm



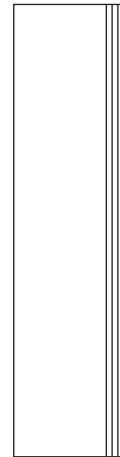
SB10 · SB60
 SB70 · SB90

Art. 2988
 30 x 120 cm



SB10 · SB60
 SB70 · SB90

Art. 2732 ¹⁾
 30 x 120 cm



SB10 · SB60
 SB70 · SB90

Art. 2620 ¹⁾
 15 x 60 cm



SB10 · SB60 · SB70 · SB90

Art. 2617 ¹⁾
 7,5 x 60 cm



SB10 · SB60 · SB70 · SB90

30 x 30 cm



Art. 2628 ¹⁾ Art. 2628 ¹⁾
 SB10 · SB60 SB1R · SB6R
 SB70 · SB90 SB7R · SB9R
 Art. 2628 ¹⁾ Art. 2628 ¹⁾

15 x 15 cm



Art. 2636 ¹⁾ Art. 2636 ¹⁾
 SB10 · SB60 SB1R · SB6R
 SB70 · SB90 SB7R · SB9R
 Art. 2636 ¹⁾ Art. 2636 ¹⁾

Treppenauftritt
 Stair tread

Grundfliesen aus Feinsteinzeug (für Wand und Boden geeignet)
 Porcelain stoneware basic tiles (suitable for walls and floors)

Art. 2846 · 80 x 80 cm
 pearl



SB10
 R10 A

opal grey



SB60
 R10 A

tobacco



SB70
 R10 A

slate grey



SB90
 R10 A

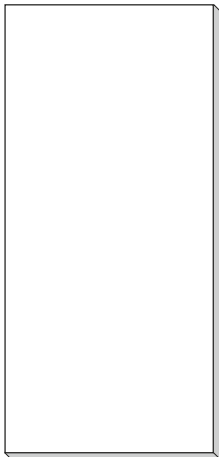
Art. 2845
 40 x 80 cm



SB10 · SB60 · SB70 · SB90
 R10 A

OUTDOOR TILES

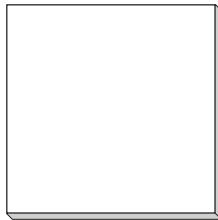
Art. 2843
 60 x 120 cm



SB60 · SB70 · SB90
 R10

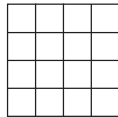
OUTDOOR TILES

Art. 2838
 60 x 60 cm



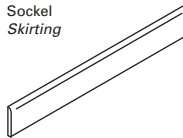
SB60 · SB70 · SB90
 R10

Art. 2013
 7,5 x 7,5 cm



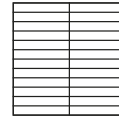
SB10 · SB60 · SB70 · SB90
 R10 B

Art. 2872 · 7,5 x 60 cm
 Sockel
 Skirting



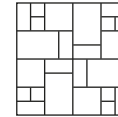
SB10 · SB60
 SB70 · SB90

Art. 2135
 2,5 x 15 cm



SB10 · SB60 · SB70 · SB90
 R10 A

Art. 2075
 30 x 30 cm



SB10 · SB60 · SB70 · SB90
 R10 A

ABERDEEN

Variationsvielfalt | *Shade variation*



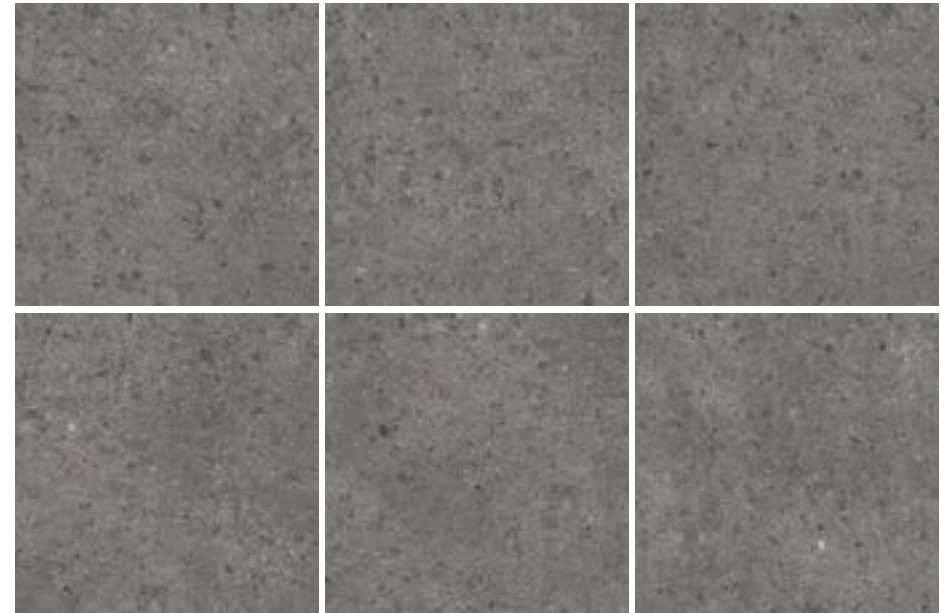
60 x 60 cm | pearl



60 x 60 cm | opal grey



60 x 60 cm | tobacco

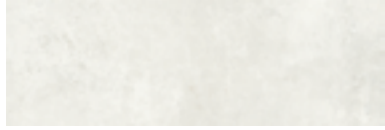



60 x 60 cm | slate grey



Grundfliesen aus Steingut (nur für die Wand geeignet)
Nonvitreous basic tiles (suitable for walls only)

Art. 1733 · 33 x 100 cm
 light fog



AL00  

light alabaster



AL10  

Art. 1581
 30 x 60 cm





AL00 · AL10 

Grundfliesen aus Feinsteinzeug (für Wand und Boden geeignet)
Porcelain stoneware basic tiles (suitable for walls and floors)



Art. 2660 · 60 x 60 cm
 alabaster white



AL10   R10



sandy grey



AL70   R10



dark coffee



AL80   R10

foggy grey



AL40   R10

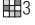

concrete grey



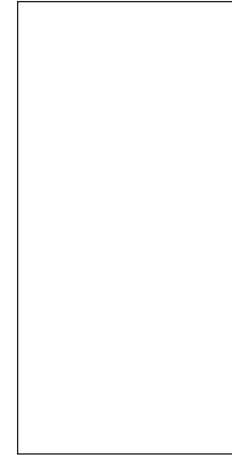
AL60   R10


night grey



AL90   R10


Art. 2730
 60 x 120 cm



AL10 · AL70 · AL80
 AL40 · AL60 · AL90
 R10

Art. 2394
 30 x 60 cm



AL10 · AL70 · AL80
 AL40 · AL60 · AL90
 R10

Dekorfliese aus glasiertem Feinsteinzeug (für Wand und Boden geeignet)
Porcelain glazed stoneware basic tiles (suitable for walls and floors)

Art. 2660 · 60 x 60 cm
 sand multicolor



AL75   R10

grey multicolor



AL65   R10

Grundfliesen aus Feinsteinzeug (für Wand und Boden geeignet)
Porcelain stoneware basic tiles (suitable for walls and floors)

Art. 2810 · 80 x 80 cm
 alabaster white



AL10
 R10

sandy grey



AL70
 R10

dark coffee



AL80
 R10

Art. 2840
 40 x 80 cm



AL10 · AL70 · AL80
 AL40 · AL60 · AL90
 R10

foggy grey



AL40
 R10

concrete grey



AL60
 R10

night grey



AL90
 R10

Art. 2656
 30 x 60 cm

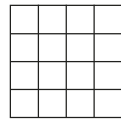


AL69
 R10



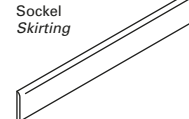
AL79
 R10

Art. 2013
 7,5 x 7,5 cm



AL10 · AL70 · AL80
 AL40 · AL60 · AL90
 R10 B

Art. 2872
 7,5 x 60 cm



AL10 · AL70 · AL80
 AL40 · AL60 · AL90

ATLANTA

Variationsvielfalt | *Shade variation*



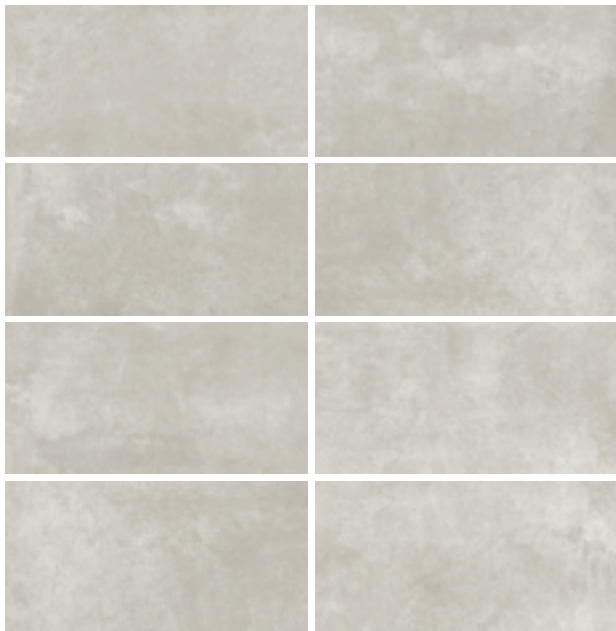
60 x 120 cm | alabaster white



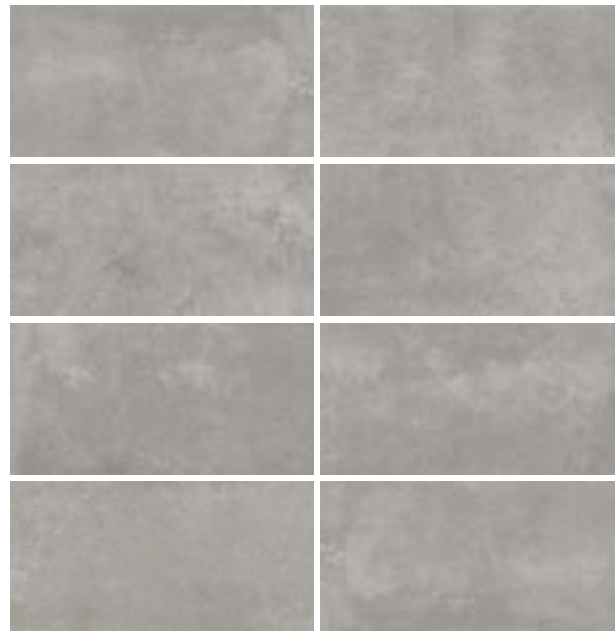
60 x 120 cm | sandy grey



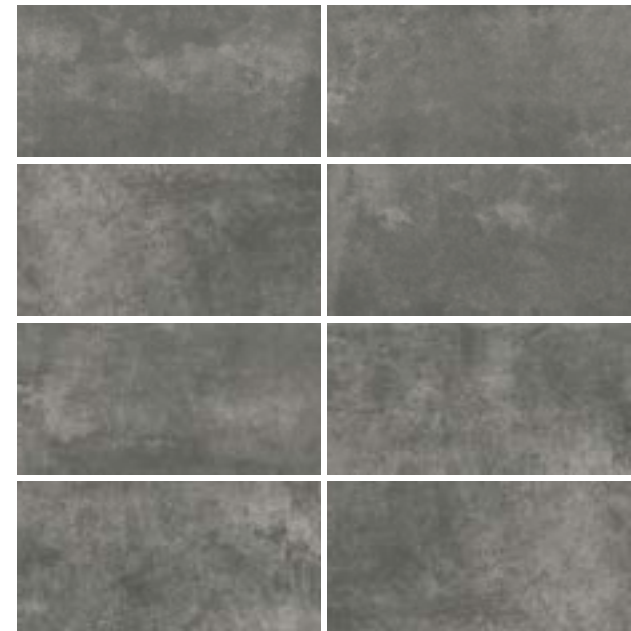
60 x 120 cm | dark coffee



60 x 120 cm | foggy grey



60 x 120 cm | concrete grey



60 x 120 cm | night grey



BELLAGIO

Grundfliesen aus Steingut (nur für die Wand geeignet)
Nonvitreous basic tiles (suitable for walls only)

Art. 1440 · 40 x 120 cm
 light shadow



TM01 
 

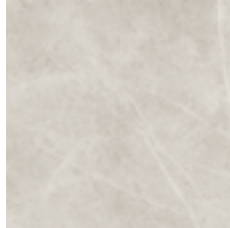
Art. 1581
 30 x 60 cm









TM01
 

Grundfliesen aus Feinsteinzeug (für Wand und Boden geeignet)
Porcelain stoneware basic tiles (suitable for walls and floors)

Art. 2660 · 60 x 60 cm
 shadow



TM6M 
   R9
 TM6L
 

Art. 2730
 60 x 120 cm



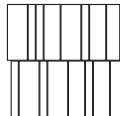
TM6M
   R9
 TM6L
 


Art. 2394
 30 x 60 cm



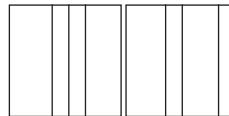
TM6M
   R9
 TM6L
 

Art. 2078
 30 x 30 cm



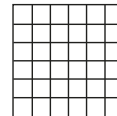
TM60
  


Art. 2079
 30 x 30 cm



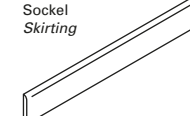
TM60
   R9
 2 Stück im Set
 2 piece set


Art. 2030
 5 x 5 cm



TM6M
   R9
 TM6L
 

Art. 2872
 7,5 x 60 cm



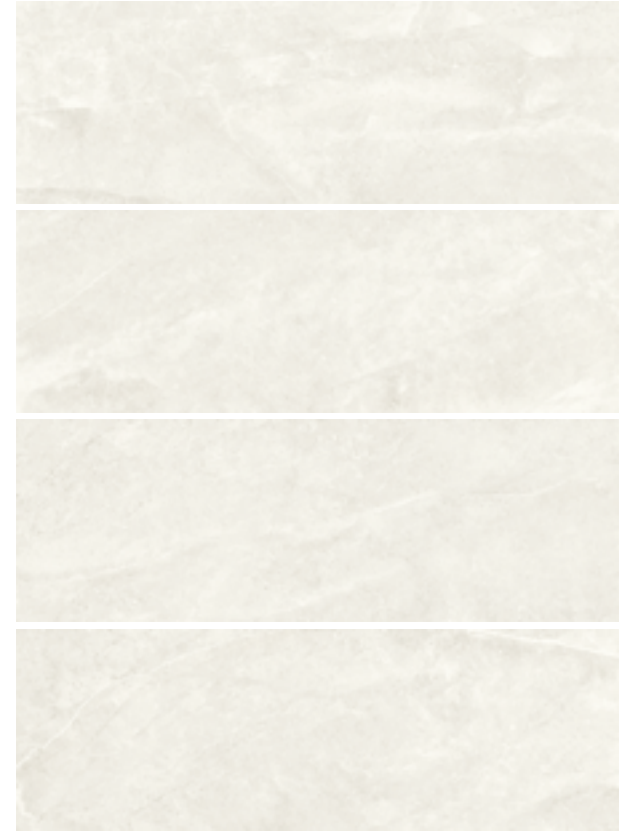
TM6M
   R9
 TM6L
 

BELLAGIO

Variationsvielfalt | *Shade variation*



60 x 120 cm | shadow



40 x 120 cm | light shadow



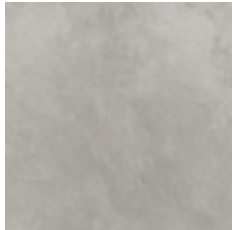
GATEWAY

Grundfliesen aus Feinsteinzeug (für Wand und Boden geeignet)
 Porcelain stoneware basic tiles (suitable for walls and floors)

vilbostoneplus

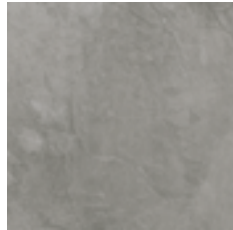
vilbostone
 Feinsteinzeug · Porcelain stoneware

Art. 2542 · 60 x 60 cm
 foggy white



SR10 2
 R10 A

manhattan grey



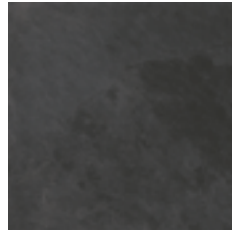
SR60 3
 R10 A

dark olive



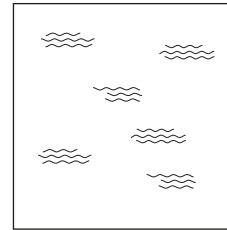
SR50 4
 R10 A

midnight black



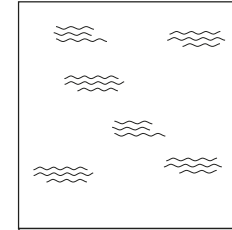
SR90 3
 R10 A

Art. 2546 ¹⁾
 60 x 60 cm



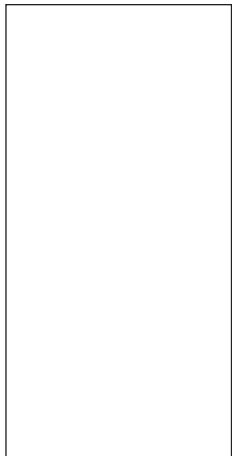
SR10 · SR60
 SR50 · SR90
 R11 B

OUTDOOR TILES
 Art. 2834 · 60 x 60 cm



SR60 · SR90
 R11 B

Art. 2556
 60 x 120 cm



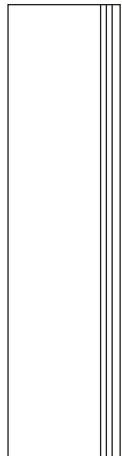
SR10 · SR60
 SR50 · SR90
 R10 A

Art. 2457
 30 x 120 cm



SR10 · SR60
 SR50 · SR90
 R10 A

Art. 2732
 30 x 120 cm



SR10 · SR60
 SR50 · SR90
 R10 A

Treppenauftritt
 Stair tread

Art. 2539
 30 x 60 cm



SR10 · SR60
 SR50 · SR90
 R10 A

Art. 2620 ¹⁾
 15 x 60 cm



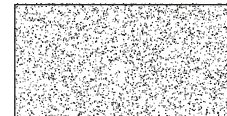
SR10 · SR60
 SR50 · SR90
 R10 A

Art. 2617 ¹⁾
 7,5 x 60 cm



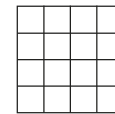
SR10 · SR60
 SR50 · SR90
 R10 A

Art. 2685 ¹⁾
 30 x 60 cm



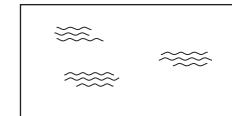
SR10 · SR60
 SR50 · SR90
 R10 B

Art. 2013
 7,5 x 7,5 cm



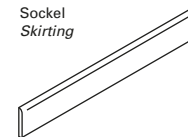
SR10 · SR60
 SR50 · SR90
 R10 B

Art. 2531 ¹⁾
 30 x 60 cm



SR10 · SR60
 SR50 · SR90
 R11 B

Art. 2872
 7,5 x 60 cm



SR10 · SR60
 SR50 · SR90

Sockel
 Skirting

GATEWAY

Variationsvielfalt | *Shade variation*



60 x 60 cm | foggy white



60 x 60 cm | dark olive



60 x 60 cm | manhattan grey



60 x 60 cm | midnight black



LIGHTPLAY

Grundfliesen aus Steingut (nur für die Wand geeignet)
 Nonvitreous basic tiles (suitable for walls only)

Art. 1733 · 33 x 100 cm

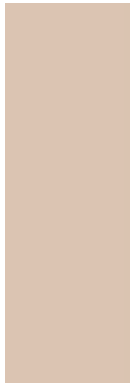
marsala



PW35



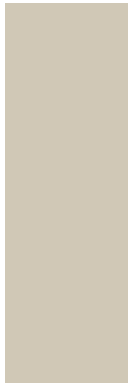
nude



PW30



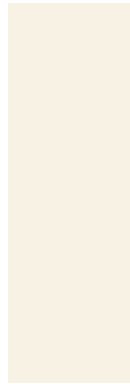
canvas



PW70



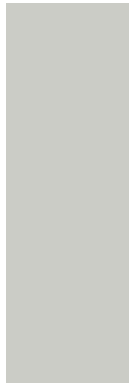
cotton



PW10



ash grey



PW60



velvet leaf



PW50



pastel blue



PW40



Art. 1045 · 0,5 x 100 cm

brass



PW22



copper



PW33



silver



PW66



Art. 1734 · 33 x 100 cm

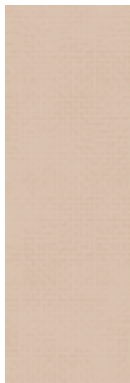
marsala



PW35



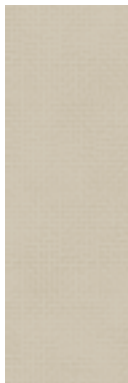
nude



PW30



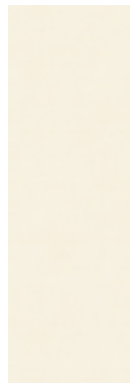
canvas



PW70



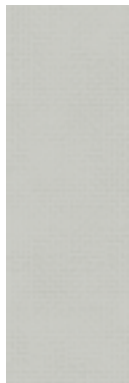
cotton



PW10



ash grey



PW60



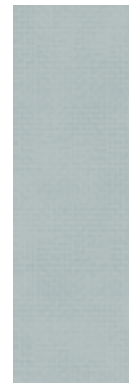
velvet leaf



PW50



pastel blue

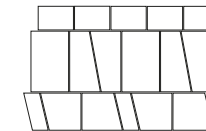


PW40



Art. 1233

33 x 50 cm



PW35 · PW60

PW30 · PW50

PW70 · PW40

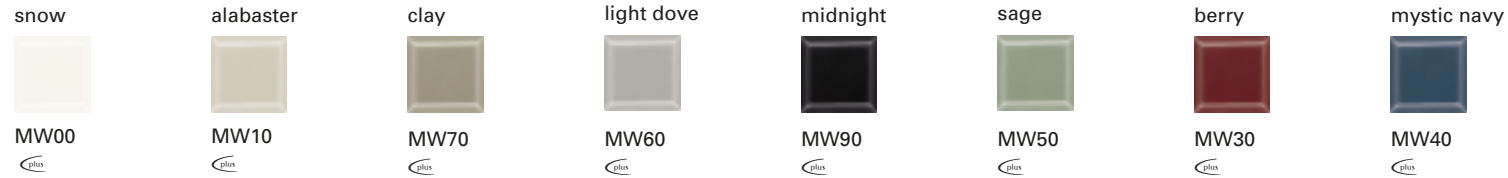
PW10



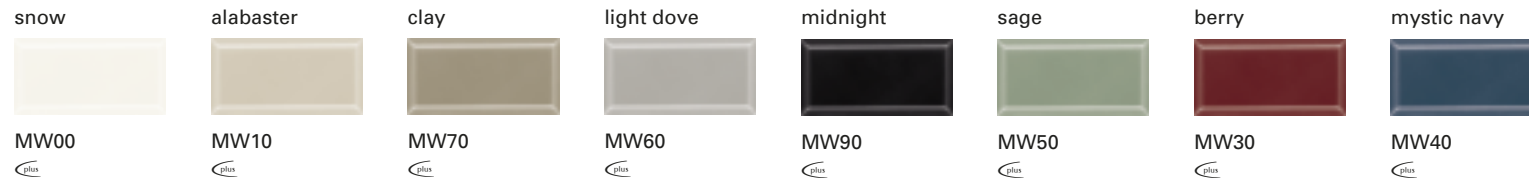
METRO FLAIR

Grundfliesen aus Steingut (nur für die Wand geeignet)
Nonvitreous basic tiles (suitable for walls only)

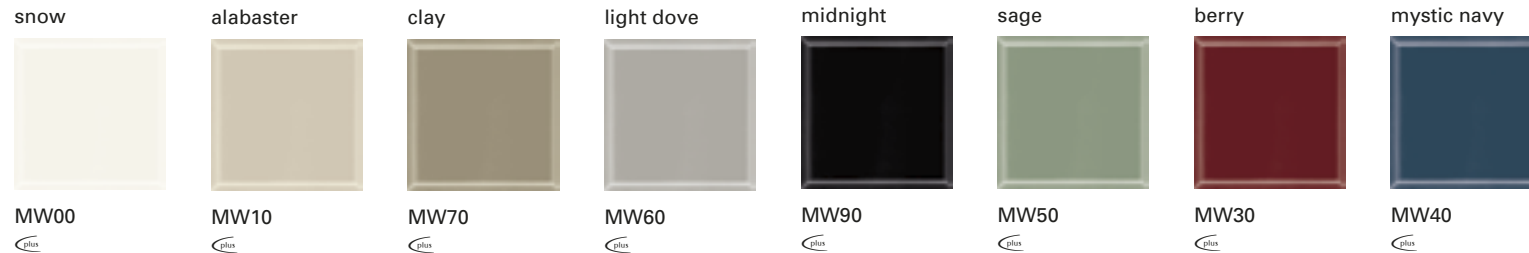
Art. 1210 · 10 x 10 cm



Art. 1212 · 10 x 20 cm



Art. 1220 · 20 x 20 cm



OAK PARK

Grundfliesen aus Feinsteinzeug (für Wand und Boden geeignet)
 Porcelain stoneware basic tiles (suitable for walls and floors)

vilbostoneplus

vilbostone
 Feinsteinzeug · Porcelain stoneware

Art. 2793 · 30 x 120 cm

farina



HR00 2
 R9

crema



HR10 2
 R9

chalete



HR20 2
 R9

brandy



HR30 2
 R9

cacao



HR80 2
 R9

caviar



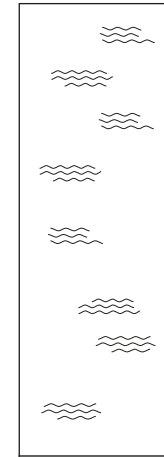
HR90 2
 R9

Art. 2792
 20 x 120 cm



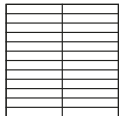
HR00 · HR10 · HR20
 HR30 · HR80 · HR90
 R9

OUTDOOR TILES
 Art. 2821 · 40 x 120 cm



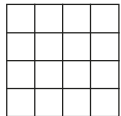
HR10 · HR20
 HR30 · HR80
 R11 B

Art. 2135
 2,5 x 15 cm



HR00 · HR10 · HR20
 HR30 · HR80 · HR90
 R9 A

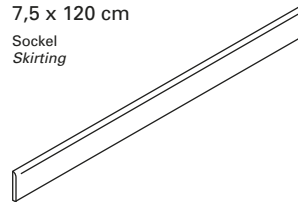
Art. 2013
 7,5 x 7,5 cm



HR00 · HR10 · HR20
 HR30 · HR80 · HR90
 R9 A

Art. 2139
 7,5 x 120 cm

Sockel
 Skirting



HR00 · HR10 · HR20
 HR30 · HR80 · HR90
 R9

OAK PARK

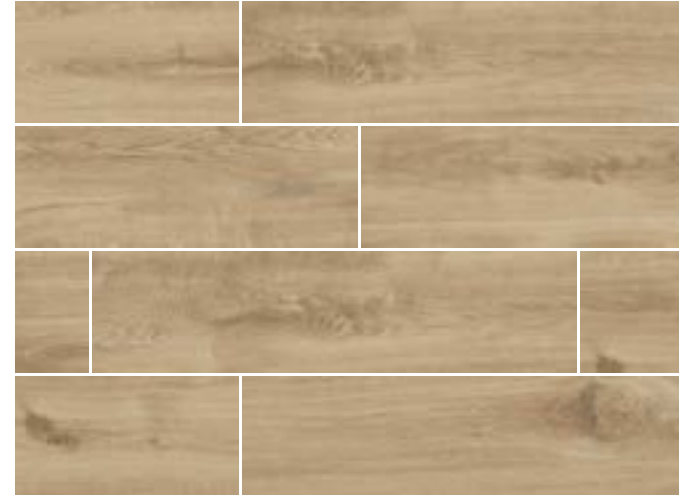
Variationsvielfalt | *Shade variation*



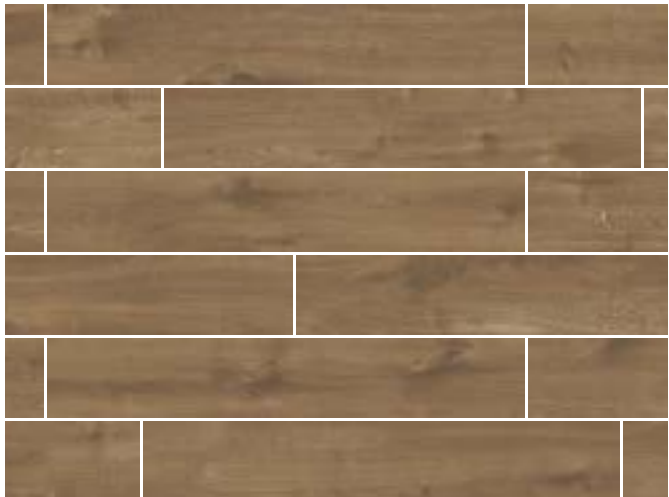
20 x 120 cm | farina



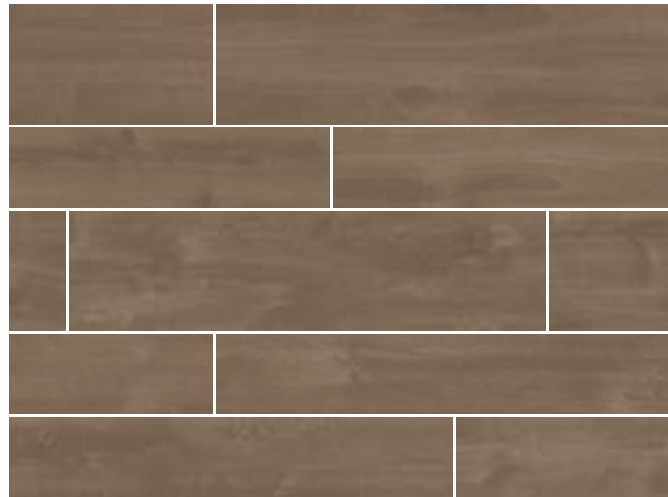
20 x 120 cm, 30 x 120 cm | crema



30 x 120 cm | chalete



20 x 120 cm | brandy



20 x 120 cm, 30 x 120 cm | cacao



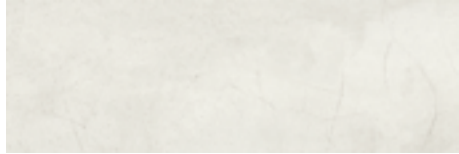
30 x 120 cm | caviar



URBAN JUNGLE

Grundfliesen und Dekorfliesen aus Steingut (nur für die Wand geeignet)
Nonvitreous basic tiles and décor tiles (suitable for walls only)

Art. 1440 · 40 x 120 cm
white grey



TC00



soft greige



TC20



Art. 1581 · 30 x 60 cm
white grey



TC00



soft greige



TC20



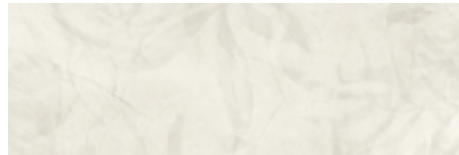
white grey jungle



TC01



soft greige jungle



TC21



Art. 1581 · 30 x 60 cm
green mix



TC50



wild jungle grey



TC05



wild jungle greige



TC25



Art. 1440 · 40 x 120 cm
green mix



TC50



URBAN JUNGLE

Grundfliesen aus Feinsteinzeug (für Wand und Boden geeignet)
 Porcelain stoneware basic tiles (suitable for walls and floors)

Art. 2660 · 60 x 60 cm
 light grey



TC10
 ✱ ✱ R9

greige



TC70
 ✱ ✱ R9

grey



TC60
 ✱ ✱ R9

dark grey



TC90
 ✱ ✱ R9

Art. 2394
 30 x 60 cm



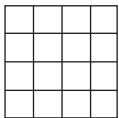
TC10 · TC70
 TC60 · TC90
 ✱ ✱ R9

Art. 2733
 45 x 45 cm



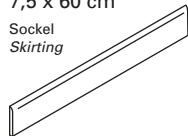
TC10 · TC70
 TC60 · TC90
 ✱ R9

Art. 2013
 7,5 x 7,5 cm



TC10 · TC70
 TC60 · TC90
 ✱ ✱ R9 ✱ A

Art. 2872
 7,5 x 60 cm
 Sockel
 Skirting



TC10 · TC70
 TC60 · TC90
 ✱ ✱

Art. 2717
 8 x 45 cm
 Sockel
 Skirting



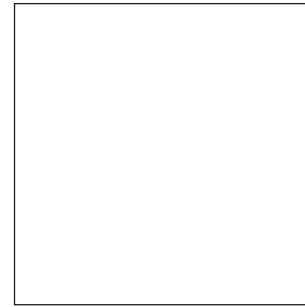
TC10 · TC70
 TC60 · TC90
 ✱

Art. 2052 · 30 x 60 cm
 multicolour



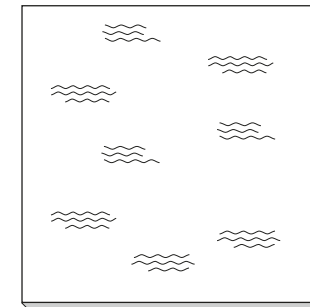
TC99
 ✱ ✱ R9 ✱ A

Art. 2810
 80 x 80 cm



TC10 · TC70 · TC60 · TC90
 ✱ ✱ R9

OUTDOOR TILES
 Art. 2888 · 80 x 80 cm



TC10 · TC70 · TC60 · TC90
 ✱ ✱ R11 ✱ B

OPTIMA: auch in 6 mm Stärke erhältlich
 OPTIMA: also available in 6 mm thickness

URBAN JUNGLE

Variationsvielfalt | *Shade variation*



60 x 60 cm | light grey



60 x 60 cm | greige



60 x 60 cm | grey



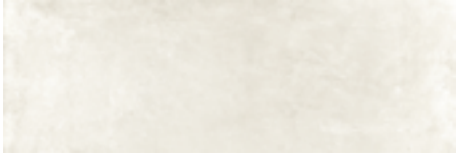
60 x 60 cm | dark grey



Grundfliesen und Dekorfliesen aus Steingut (nur für die Wand geeignet)

Nonvitreous basic tiles and décor tiles (suitable for walls only)

Art. 1440 · 40 x 120 cm
light grey



BC00



Art. 1581 · 30 x 60 cm
light grey



BC00



Art. 1486 · 40 x 120 cm
light grey



BC00



Art. 1597 · 30 x 60 cm
light grey



BC00







WORKSHOP

Grundfliesen aus Feinsteinzeug (für Wand und Boden geeignet)
Porcelain stoneware basic tiles (suitable for walls and floors)

Art. 2871 - 60 x 60 cm
 multicolour mix



BC30  4
   R9





Art. 2870
 30 x 60 cm



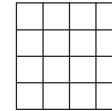
BC30
   R9

Art. 2071
 30 x 50 cm



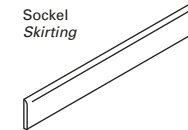
BC30
   R9  A

Art. 2013
 7,5 x 7,5 cm



BC30
   R9  A

Art. 2872
 7,5 x 60 cm



BC30
 

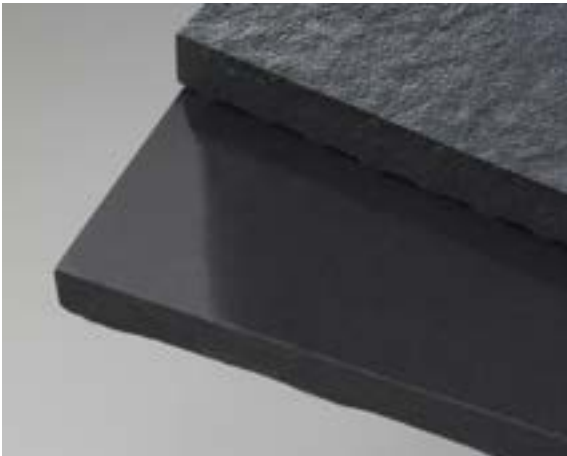


ceramicplus

Villeroy & Boch

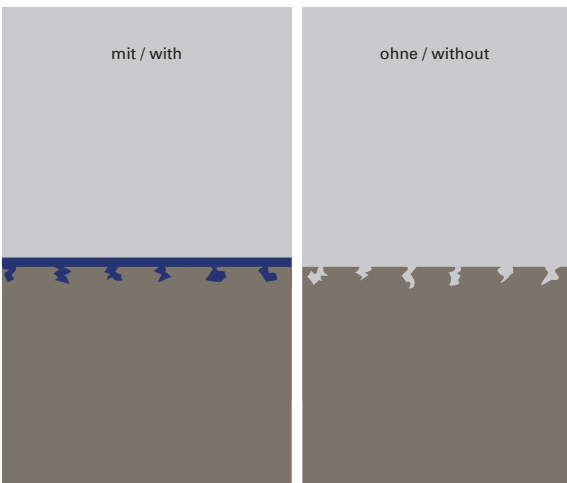
Unsere Wandfliesen aus Steingut sind werkseitig mit **ceramicplus** ausgestattet. Mit dieser pflegeleichten Oberfläche brauchen unsere Fliesen wesentlich weniger Pflege. Zur Reinigung genügen oft nur Wasser und ein Tuch, aggressive Reiniger werden überflüssig.

*The **ceramicplus** finish is applied to our nonvitreous wall tiles at the factory. Our tiles thus require much less care. Often, the only cleaning materials that are required are water and a cloth; aggressive cleaning agents are redundant.*



vilbostone Feinsteinzeug ermöglicht eine Vielzahl unterschiedlicher Oberflächen-Designs mit außergewöhnlichen Farb- und Glanzeffekten. Erhältlich ist *vilbostone* Feinsteinzeug als unglasiertes und glasiertes Material mit matten, polierten, anpolierten sowie reliefierten Oberflächen und mit unterschiedlichen Rutschhemmungen.

vilbostone porcelain stoneware permits a wealth of different surface designs featuring unusual colour and sheen effects. vilbostone porcelain stoneware is available both glazed and unglazed, with a matt, polished, rough-polished or relief surface finish and in various classes of slip resistance.



vilbostoneplus






Das unglasierte *vilbostone* Feinsteinzeug ist in matter und anpolierter Ausführung mit der Oberflächenversiegelung **vilbostoneplus** ausgestattet, das die Fliesen unempfindlich gegen Schmutz und Flecken macht. Während des Herstellungsprozesses der Fliesen wird die Struktur ihrer Oberflächen so versiegelt, dass die Fleck- und Schmutzbeständigkeit weiter zunimmt und eine Nachbehandlung mit Imprägniermitteln nicht mehr erforderlich ist.







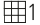



*Unglazed vilbostone porcelain stoneware with a matt or rough-polished surface finish have the **vilbostoneplus** seal, which renders the tiles particularly resistant to dirt and stains. During the manufacturing process, the structure of the tile surface is sealed in order to further increase the tiles' resistance to staining and dirt, as a result of which subsequent treatment with impregnating agents is no longer necessary.*

Zeichenschlüssel

1 2 3 4 5 Abriebgruppe (DIN EN ISO 10545-7)

Die Abriebgruppe beschreibt die Verschleißeigenschaft von Fliesen aus glasiertem Steinzeug. Es werden 5 Abriebgruppen unterschieden: von 1 (sehr leichte Beanspruchung) bis 5 (starke Beanspruchung)






-  Rutschhemmung im gewerblichen Bereich
-  Rutschhemmung im Barfußbereich
-  Frostbeständig nach DIN EN ISO 10545-12
-  Rektifiziert
-  Edelmetallaufgabe. Kratzempfindliches Dekor.
Reinigung nur mit Wasser und Geschirrspülmittel.
Verfugung nur mit geeigneten, fein aufgemahlten, quarzarmen Fugenfüllern.







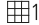

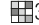

Fliesenstärke 20 mm
-  Fliesenstärke 6 mm
-  **ceramicplus**
-  **vilbostoneplus** Oberflächenversiegelung
-  PowderTouch Matte, pudrige Premiumglasur
-  **concept³** Komplettes Wand- und Bodenkonzept
-      Variationsvielfalt

Signs and symbols

1 2 3 4 5 *Wear-resistance group (DIN EN ISO 10545-7)*

The wear-resistance group defines the wearing properties of tiles in glazed vitreous. A distinction is made between 5 wear-resistance groups, from 1 (suitable for minimal stress) to 5 (suitable for high levels)

-  *Anti-slip in workshop areas*
-  *Anti-slip in barefoot areas*
-  *Frostproof in acc. with DIN EN ISO 10545-12*
-  *Rectified*
-  *Precious metal-plated. Not scratchproof.
Clean with water or dish washing liquid only.
Use only a suitable, fine-grain mortar with low quartz content for jointing.

Tile thickness 20 mm*
-  *Tile thickness 6 mm*
-  **ceramicplus**
-  **vilbostoneplus** *Surface seal*
-  PowderTouch *Matt, powdery premium glaze*
-  **concept³** *Complete wall and floor concept*
-      *Shade variation*

V & B Fliesen GmbH

*Rotensteiner Weg
D-66663 Merzig
E-Mail: info@vb-fliesen.com*

ambiente
EUROPEAN TILE DESIGN

400 East Pine Street
Suite 210
Seattle, WA 98122
206.524.2113

