

Please fill in and fax or email both pages to us.

NEW: enter an item number for your hardware choice on the line below each cabinet item.

Quantity	Model #	Size	Description	Cost
1	XX.XXX	XX"	Some Collection Vanity	\$XXX
	85.801		Satin Nickel Arched Handles	\$0

Collection Primary Choice

Alki: Essence View Spa Cafe

Belltown

SoDo

Newhalem

Birch Bay

Wallingford

Ravenna

Montlake Montlake View Montlake Retro-fit 32" tall

EuroLav: Montlake Ravenna Wallingford

Wall Elements (Storage & Medicine Cabinets): Contemporary or Traditional

Vanity Top

Door/Drawer Style

Slab

Shaker

Deco Miter

Ogee Miter

Ultraline

Beaded

Classic Miter

Cabinet Finish

Natural Cherry

Dark Cherry

Cinnamon Cherry

Pecan Cherry

Chocolate Cherry

Natural Maple

Natural Oak

Chocolate Oak

Midnight Oak

Silver Oak

Satin White

Satin Biscuit

Satin Silver

Powder Grey

Satin Black

Vanity Top Finish Granite, Quartz or Vitreous China

Granite

Glacier White

Andino White

Colonial Gold

New Venetian Gold

Blue Pearl

Black Galaxy

Vitreous China

White

Quartz

Lattice

Cotton White

London Grey

Pearl White

Botticino

Dreamy Marfil

Via Augusta

Sangda Falls

Creekside

Nirvana

Grey Lake

Xcaret

NOTE about matching wall elements to collections

Alki, Belltown, SoDo and Nehalem collections: choose **Contemporary** wall storage and medicine cabinets.

Birch Bay collection: has its own design dedicated medicine cabinet.

Wallingford, Ravenna, Montlake, EuroLav collections: choose **Traditional** wall storage and medicine cabinets.

Important Vanity Details

Front-to-back: 21" 18"

Drawers on the: Right Left (if applicable)

If a 60" Vanity: Single Basin Double Basin

Important Vanity Top Details

Front-to-back: 22" 19"

Basin Color: White Biscuit

Basin Shape: Oval Rectangular

Faucet Drilling: 8" 4" Single Hole No drilling

61" Tops: Single basin Double basin

Hardware Options

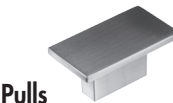


Knobs

Polished Chrome 85.200

Satin Nickel 85.202

Oiled Bronze 85.203



Pulls

Polished Chrome 85.400

Satin Nickel 85.402

Oiled Bronze 85.403



Arched Handles

Polished Nickel 85.500

Satin Nickel 85.501

Oiled Bronze 85.502



Bar Pulls

Polished Chrome 85.503

Satin Nickel 85.504

Bronze Copper 85.505



Long Bar Pulls (For Belltown only)

Polished Chrome 85.506

Satin Nickel 85.507

Oiled Bronze 85.508

No Hardware/Drill 85.000

NOTE about Hardware

Once you have chosen your door and drawer hardware, enter its item number on the order form in the line following the cabinet for which it was chosen.

Date ____ / ____ / ____

PO Number _____ Showroom _____

Address _____ City _____ State _____ Zip _____

Phone (____) _____ Fax (____) _____ Email _____

Showroom Contact Person _____

Quantity	Model #	Size	Description	Cost

NOTES