



Inside this issue:

November Chapter Meeting At International Kitchens

Mary Bridge Festival of Trees work days	2
Mystery Member Letter from the President	3
Christmas Cards for Sale Roster on line Ethan Allen Membership Drive	4
Holiday Party	5
Day of Caring	6
Student Career Day	7

Where: International Kitchens

When: November 17th

5:30-6:30 Eat & Greet

6:30-6:50 Business Meeting

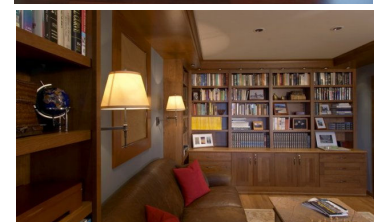
6:50-7:20 Educational Speaker

7:20-8:00 Presentation by International Kitchens

Cost: \$20.00 Members with an RSVP
\$30.00 Non-Members and at the Door

Since 1978 International Kitchens has specialized in designing and providing cabinetry for some of the most beautiful homes in the Pacific Northwest. Our highly qualified space planning and design specialists can assist you in selecting from our wide range of cabinetry styles and finishes for all areas of your home.

Our Educational Speaker, Dane Gregory Meyer is a West Coast photographer based in the Seattle-Tacoma, WA area. He has been shooting commercially since 1988. In the last decade, his work has focused on interiors, architecture and people. He has served many leading businesses, organizations, architects, designers, developers, contractors, artisans, artists, publications, and ad agencies. His work has often resulted in both regional and national awards for his clients. Simplicity is a hallmark of both Dane's work and his work methods. His years of experience allow him to move quickly to the best angle, the best shot. His naturalistic style eschews the fussy, the over-planned, the trendy, instead embracing an almost Asian "less is better" philosophy that seeks to reveal the deep truth of things.



Special points of interest:

- Pictures of Mary Bridge work days
- Holiday Party
- Mystery Member
- Christmas Cards for Sale

Mary Bridge Festival of Trees Decorating Party



Chad Burnworth
Fran Hazel
Vonda Marsland
Jean Molloy
Barbara Henning
Karen Lunn-Fisher
Jennifer Chase
Cheryl Gaddis
Friends of Mary Bridge Hospital

Under the leadership of member Mary Pat Curran and design expertise of our own floral designer Chad Burnworth, NWSID members volunteered to make Christmas arrangements for the Mary Bridge Festival of Trees. We spent 3 Wednesday Nights at Chad's studio here in George Town working our little fingers off to create some very beautiful wreaths and flower arrangements to be auction off at the festival. It was a great time by all.

Those who gave so selflessly were:
Mary Pat Curran

If you are interested in attending the Festival of Trees at the Tacoma Convention & Trade Center on December 5&6 th, there are free admission tickets available at the NWSID office.



Resource Library

Calling all PRA's

Under the direction of Karen Lunn-Fisher, we are setting up a resource library in the NWSID office for designers to access for the design projects. We would like to have all the PRA's represented with their samples and or literature. Please contact Karen Lunn-Fisher @ 425-361-3980



or lunnfisherd-
esign@comcast.net to arrange getting your information to the library.

Mystery Member

Here's another chance for all of you to win a gift card from Starbucks. It's really simple, just guess November's "Mystery Member".

Below, you will find a series of facts about this mystery member. Put your best guess on the back of your business card and drop it in the pot at the November meeting. Remember, only one entry per member and it must be in the form of a question.

- Has been a member of NWSID since 1986
- Member says the best thing about NWSID is its members
- Born in Seattle
- Married 33 years
- 2 children
- Favorite thing to do: Go out to lunch with friends
- Is a picky eater
- Special talent: painting and scrapbooking
- Loves to entertain and loves cats
- Attended college in Portland OR after high school and design school when the oldest child was 4
- Favorite food: anything sweet
- Best trait: loves to help others
- Wants to go to Israel

Letter from the President - Jann Placentia

Can you believe it's November already?

This month, besides heralding the start of the Holidays and a time to give thanks for friends, family, and veterans, is also a very busy month for NWSID. Just a few of the highlights:

✦ November 13: We will have our kiosk in the Seattle Design Center for Student Career Day. Many of us have offered to give design students the benefit of our experience as designers through one-on-one conversations, panel discussions, and portfolio reviews, among other things.

✦ November 19: Then, we'll be hosting a luncheon during the SDC's Third Thursday on the 19th, in which we'll feature a panel discussing the

benefits of belonging to a professional organization.

November 14 and 21: As a way to give back, NWSID has decided to support Solid Ground by sprucing up one of the family shelters, Bethlehem House in West Seattle. We have been gathering donated furniture and accessories for the past few weeks. Two Saturday work parties are scheduled – the 14th and the 21st. Please join us as we transform this residence for large families..... it's a good thing.

News will be coming soon about our December **Holiday Party at Pentel Granite and Marble**.

Many thanks to **Hunter Marshall**, of **Year of the Monkey** for hosting our October general meeting and shopping opportunity! Thanks also to Shelley

Nordlund for overcoming a difficult speaking space and enlightening us about Feng Shui.

The next meeting will be November 17th at **International Kitchens** in Bellevue – watch for the Evite!

I hope to see you all at one or all of the events we have on the calendar in November!

Have a wonderful Thanksgiving, and may we all remember how much we have to be thankful for.....

Jann Placentia, President

Roster on line

You should have received a email copy of our roster. If you see a error and want to correct it, please let Fran know @ nwsid@nwsid.net. She will then send out a notice of revision that others can place on their copies.



Christmas Cards FOR SALE

Our one of a kind design Christmas cards by Sherrill Hull local artist are for sale again this year. We will be selling them for \$10.00 for a package of 12. This is a small fund raiser we started last year for NWSID.

To purchase call or email Fran @ 206-763-8799 or @ nwsid@nwsid.net. They will also be available at the November chapter meeting.

Ethan Allen



Members

Jill Owen a designer member of NWSID works for Ethan Allen and is presenting a new program from Ethan Allen with the following:

Ethan Allen Designer Affiliate Program

Ethan Allen now welcomes qualified independent designers to become Interior Design Affiliates which will enable them to earn a referral fee on every purchase. We process every order, oversee production and professional delivery

and handle customer service and logistics freeing you up to focus on what you do best, Interior Design. Every product we sell has our full backing and support including our warranties.

We provide a referral fee of up to 10% earned on every purchase. We offer a spectacular selection of products and styles as well as custom bedding and window treatments. We provide orientation and training, order processing and billing, free local delivery and excellent customer service.

To qualify, applicants will need to provide a W-9 form, Business License, Sales and Tax Use Permit or Certificate of Incorporation or Certificate of Organization. Applicants will also need to provide proof of one of the following: Design related degree or membership in NWSID, ASID, IIDA, AIA, IDS or CID.

Applications and details can be found at www.ethanallen.com

Contact Jill Owen, NWSID member at jowen@tukwila.ethanallen.com for additional information.

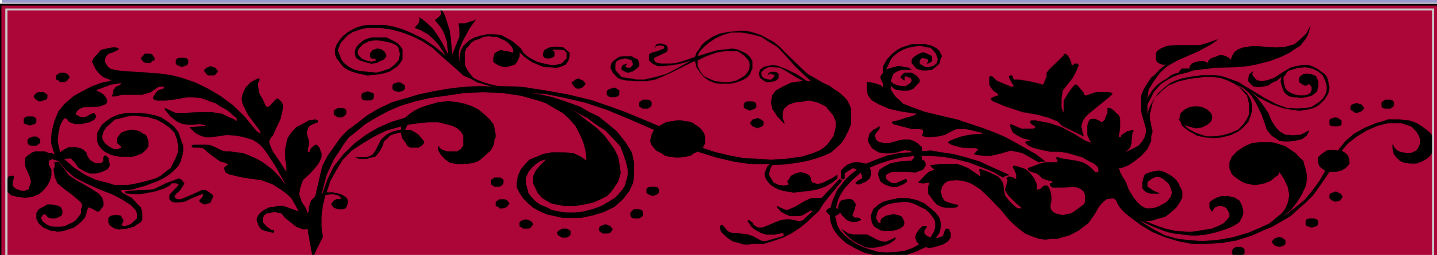
Membership Drive Luncheon

On November 19th NWSID will be hosting a luncheon and forum for prospective members. This is a opportunity to reach designers who do not belong to a professional organization on the value of do-

ing so. This meeting will be held after the SDC's 3rd Thursday seminar from 12:30-1:30. If you know of anyone who may be interested in us and has questions about the organization, please invite

them and have them RSVP to Cara Fleming @ 206-226-4933 or Ann Marie Launders @ 425-745-8818





NWSID HOLIDAY COCKTAIL PARTY

DECEMBER 15TH 2009

PENTAL GRANITE & MARBLE
ARCHITECTURAL/DESIGN
SHOWROOM

713 SOUTH FIDALGO, SEATTLE 98108

5:30 - 8:30 P.M.

HORS D'OEUVRES, HOSTED BAR & DOOR
PRIZES

Bring an unwrapped gift for needy children then your
business card goes in for a chance to win a raffle!

MEMBERS \$25

NON-MEMBER GUEST \$35 (LIMIT 1)

WITHOUT RSVP ADD \$10



Day of Caring

NWSID is teaming up with Solid Ground to participate in a community service project on 2 Saturdays this month: the 14th and 21st. Solid Ground, is a local organization, that is dedicated to achieving a just and caring community, free from poverty, prejudice and neglect. The Bethlehem House provides transitional housing in West Seattle for up to 6 months for families with children, or single parent families. In addition to that most important of services, a home, Solid Ground provides emergency resources, resource materials, children's services, food resources and assistance locating permanent houses.

We are still in need of additional furniture donations and would be glad to have a few more volunteers. Please be on the look out for the following items: Dining room table and chair set to seat 8 or more, dressers, end tables, chairs, lamps, night stands, twin beds and box springs (we have mattresses), kid friendly accessories and window treatments.

If you have a donation, please contact myself (Kenna Stout kenna@briointeriordesign.com) or Cara Fleming (carasinteriors@aol.com) to to the CFM Warehouse in ASAP.

We will be working from 9 am days. We will need 3-4 Volun-CFM warehouse **(500 S. Bran-WA)** at 9 am each day. These responsible for loading furniture our rented truck. Everyone truck driver) should meet on **Seattle, WA 98126 in West**

help prep the space for the delivery and begin on general repairs. Once the entire group is onsite, we will have a general meeting to go over what will need to be done that day and specify tasks for individuals.



schedule delivery
Georgetown

to 3 pm both
teers to meet at the
don Seattle
folks will be re-
and accessories in
else (excluding the
site **(7132 35th SW
Seattle)** at 9am to

Thanks again for your commitment to serving our community! Our work will benefit many families transitioning from homelessness by way of Solid Ground's Bethlehem House in the future! If you would like any additional information about the project, please visit our website at <http://www.nwsid.net/live/calendar/events> and Solid Ground's website at <http://www.solid-ground.org/Programs/Housing/Bethlehem/Pages/default.aspx>

Northwest Society of Interior Designers

5701 6th Avenue South #214

Seattle, WA 98108

Phone: 206-763-8799

Fax: 206-763-8799

Email: nwsid@nwsid.net

Mission Statement

The Northwest Society of Interior Designers is a regional organization of professional interior designers and resource affiliates dedicated to supporting the career development of its members and promoting excellence through peer networking, continuing education and adherence to high ethical standards.

We're on the Web Nwsid.net

Student Career Day

Student Career Day was a great success. On Friday November 13th, design students from various design schools around the Northwest descended upon the SDC to see what the real world of design look like. There were panels about design as a career and mentoring stations for one on one with designers. NWSID had our kiosk up and we were able to pass out student applications for membership in our organization. It was fun to answer their questions about us and to encourage them to check us out at one of our chapter meetings.

Thank you to Karen Lunn - Fisher for organizing all the volunteers who manned the kiosk.

Thank you to our volunteers:

Autumn Donavan

Shelley Nordlund

Cara Fleming

Chris Colman

Fran Hazel

Kenna Stout

Doreen Hamann

