

Signature Series

THE ASHTON

2,708-3,121 Sq. Ft. | 4-6 Bedrooms | 2.5-3 Baths

ANYWHERE
Lombardo



 **Craftsman**



 **European Romantic**

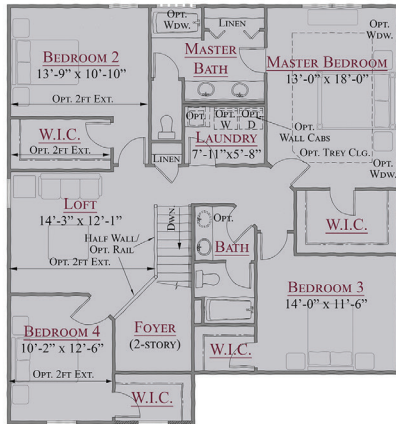
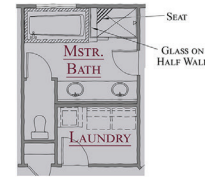
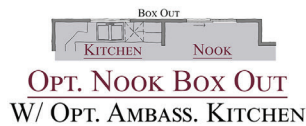
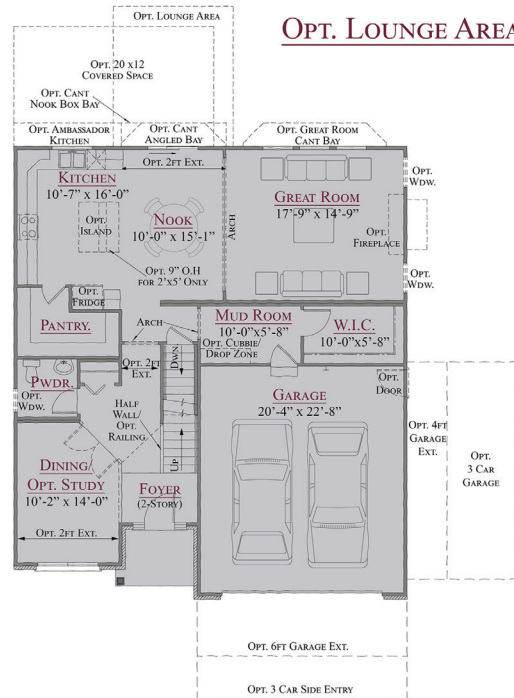
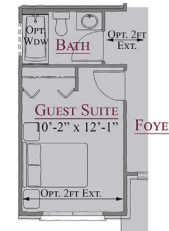


 **American Traditional**



 **American Colonial**

2,708-3,121 Sq. Ft. | 4-6 Bedrooms | 2.5-3 Baths

**SECOND FLOOR PLAN****OPT. DELUXE
MASTER BATH****OPT. LUXURY
MASTER BATH****OPTIONAL ARCHWAY
w/COLUMNS
GREAT ROOM TO NOOK****OPT. FULL BATH
I/L/O
POWDER ROOM****OPT. NOOK BOX OUT
w/ OPT. AMBASS. KITCHEN****OPT. LOUNGE AREA****OPT. AMBASSADOR
KITCHEN****OPT. STUDY
I/L/O DINING RM****FIRST FLOOR PLAN****OPT. OPEN STAIR
TO BSMT****OPT. GUEST SUITE
I/L/O DINING RM**

This depiction represents an artist's conception of the elevation and floor plan and is not intended to be an exact representation or show specific detailing. Plans remain subject to change without notice. Drawings are not to scale. All measurements shown are approximate and not necessarily to scale. Location, size and construction of doors, windows, wall, fireplaces and any other items depicted may vary depending on elevation preference or choice of options and are subject to change without notice. Some options and elevations shown may not be available in every neighborhood; see Sales Manager for details. Due to normal construction tolerances, the room sizes shown may vary slightly. The Builder may change home design, materials, features and methods of construction without prior notice. Model homes may contain some optional features not available through the Builder.