

Mig-21

Dear customer,

congratulations on the purchase of the **Mig-21** model. Before you begin, please read carefully the building instructions and make sure that you understand the building process.

Parts list:

Part name	pieces	Part name	pieces
Fuselage of EPP - top part	1	Elevator axis bushing	2
Fuselage of EPP - lower part	1	Elevator axis (carbon 5x100 mm)	1
Wing of EPP	2	Elevator lever	2
Elevator of EPP	2	Instructions	1
Vertical tail of EPP	1	Self-adhesive sticker set	1
Motor bulkhead	1	Wing spars (carbon 400x1 mm)	4

You will need the following tools and materials:

CA glue, CA glue activator, sharp (modelling) knife.

To complete the model you will need: a receiver (MZK), servos (W-060), a controller (TMM 1210-3 or Jeti 12), an accumulator battery (3 LiPol cells of 640-1200 mAh), a motor (HCS-80/2E or similar of about 80W output).

Description of the model:

The model is completely made of EPP and has some carbon components. With its weight beginning at 280 grams it is an ideal model for flying in any suitable spot (e.g. a school playground or in the street). It is intended not only for experienced pilots, but also for the advanced modellers. To power it you may use a motor from our production, e.g. the HCS-80/2E, and three Lithium Polymer cells. Thanks to a well thought-out design the construction would take only about 90 minutes.

Building process:

Unless otherwise stated, all joints should be glued with the rapid CA glue. Start the building by assembling both wings halves (Fig. 1). Using the Fig. 2 as a guide, using a sharp modelling knife, cut a 1-2 mm deep slit into the wing from both upper and lower sides. Press the carbon spar (rod) into the slit and glue there from both sides, using thin CyA glue. Glue the wing into the top fuselage part (Fig. 3). Glue the aileron levers (Fig. 4). Install the aileron servo and its control rods (Fig. 5). Using the Fig. 6 as a guide, glue in place the bushings for the slab elevator the carbon tube and elevator lever (Fig. 6). Check the neutral position of the servo and glue the elevator lever in place (Fig. 7).

Glue the motor bulkhead and connect the speed controller (Fig. 8). Screw-on the motor bearers and fasten the motor. The location of the receiver is shown on the Fig. 9. Now glue the lower fuselage part, first make whole for ailerons rod (Fig. 10). Glue the elevator, ensure the wing and right and left elevator planes are parallel and that they are at the same angle relative to the wings (Fig. 11). Glue the vertical tail in place (Fig. 12). After that glue nose cover (Fig. 13).

The position of centre the gravity is 320 mm from the motor bulkhead (Fig. 15). Then cut, using a soldering gun, an opening for the battery pack, the dimension of the battery opening shall be some 2 to 3 mm less than the outer dimension of the battery pack, so that the batteries would hold in place without any extra fixation (Fig. 14).

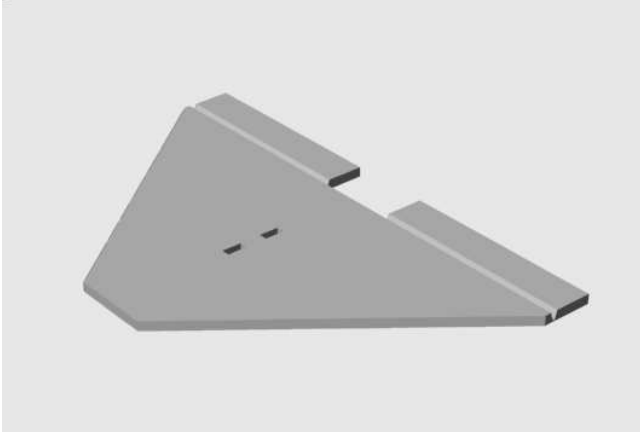
Now the model is complete. Its appearance you can enhance by applying the marking self-adhesive decals.

For the first flight, set the deflection of the controls to the half of their travel. As the model, due to the propeller torque, tends to roll to the left, set the trailing edge of the right half of the elevator some 4 mm up. The model has specific flight characteristics – thanks to its layout it can fly not only fast, but also very slowly. Bear in mind that the propeller torque effect is much more pronounced during slow flight, especially after the launch, and the model rolls slightly to left.

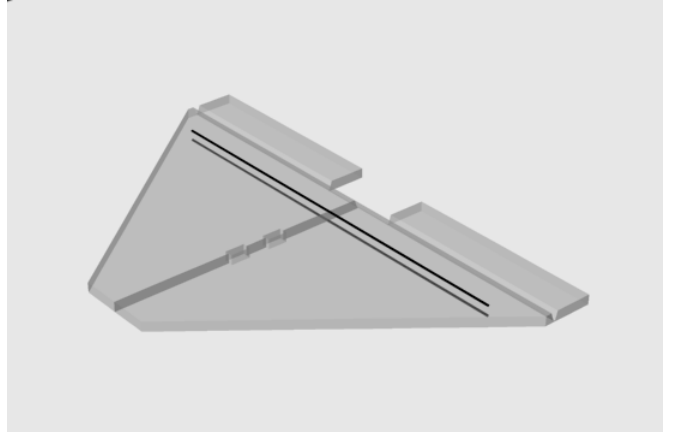
This model is no toy – therefore avoid flying in crowded places or such areas where health or property not only of yourselves, but also of third persons could be jeopardised.

Lots of fun and many happy landings wishes FreeAir.

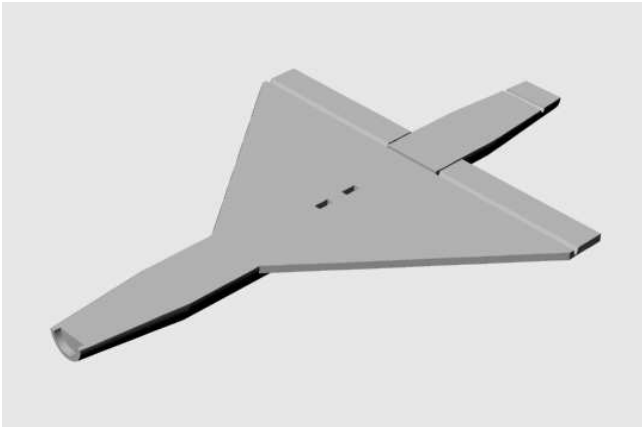
Obrázková příloha



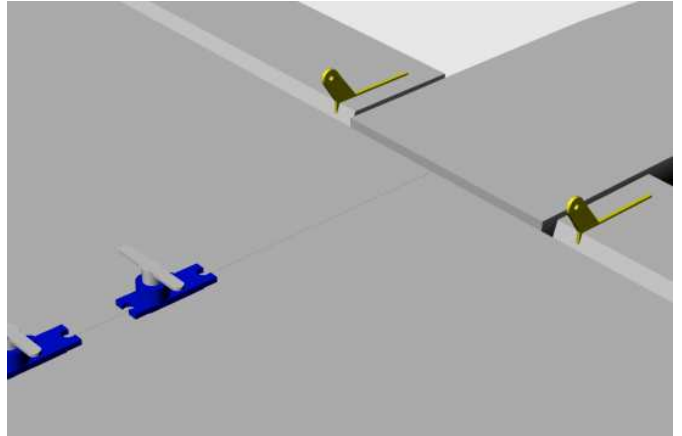
Obr.1



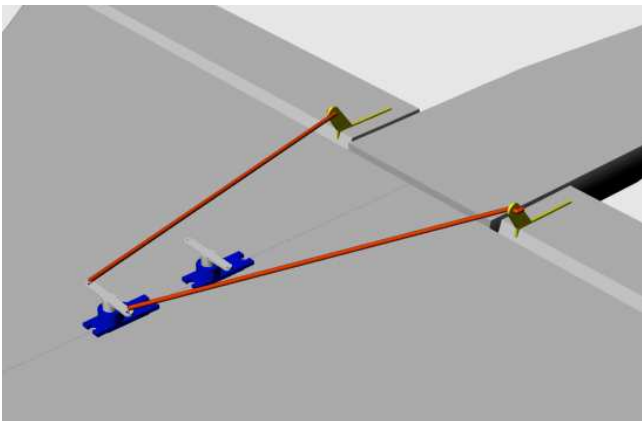
Obr.2



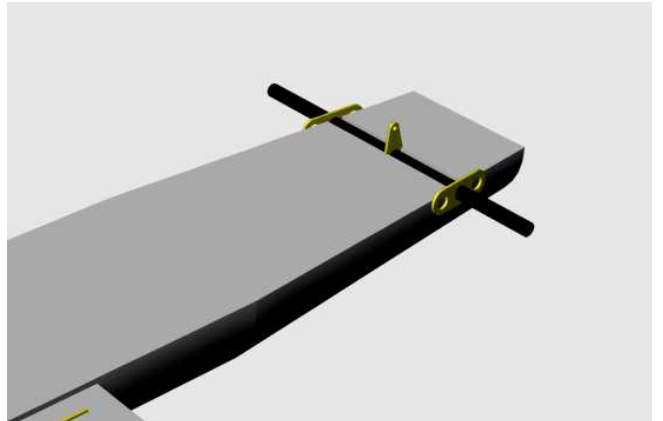
Obr.3



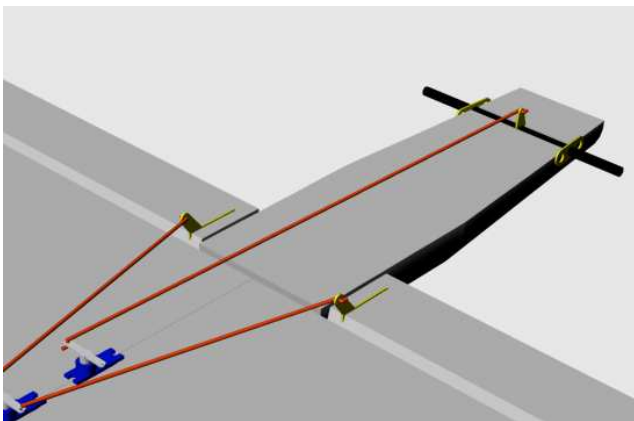
Obr.4



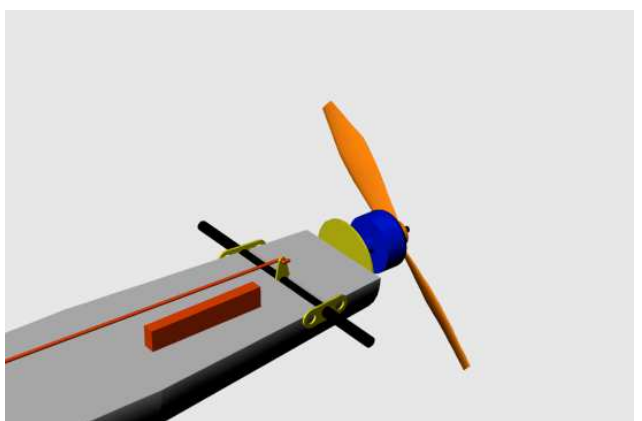
Obr.5



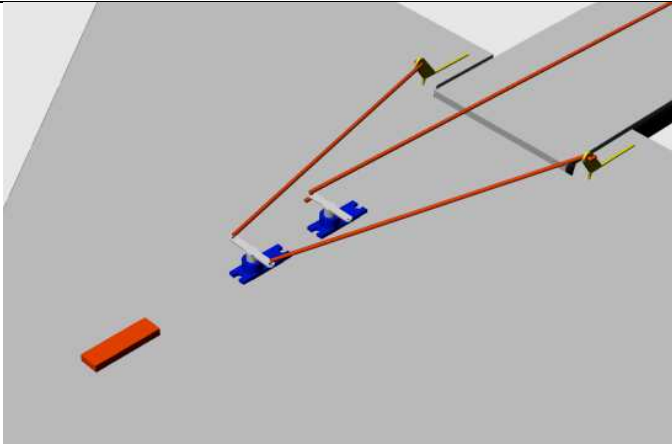
Obr.6



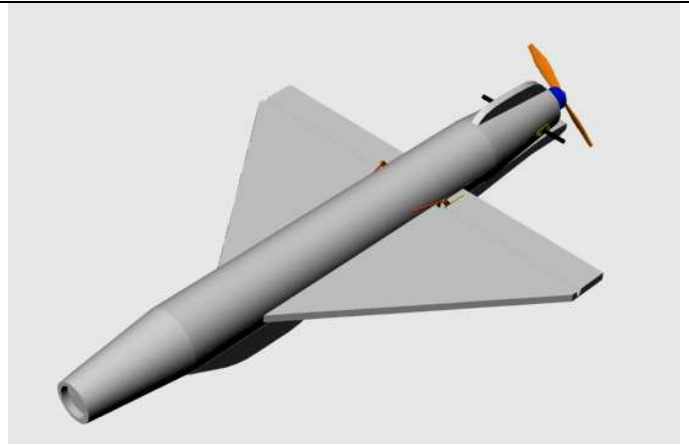
Obr.7



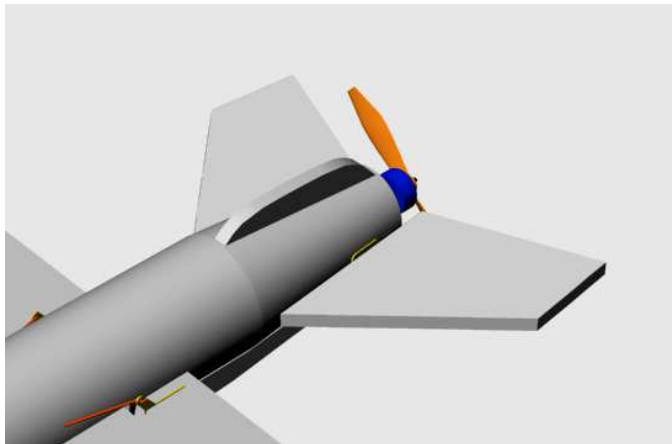
Obr.8



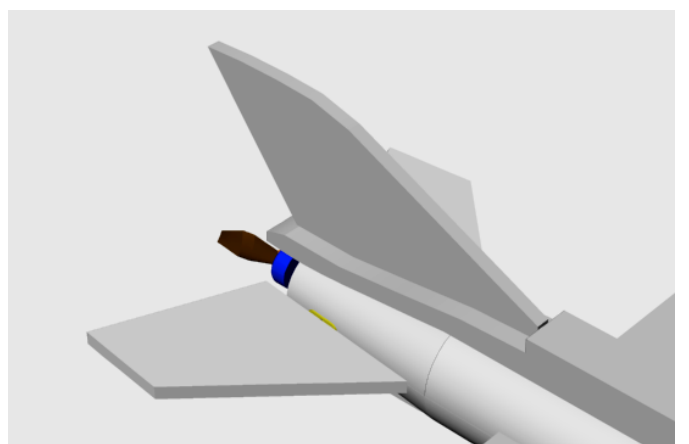
Obr.9



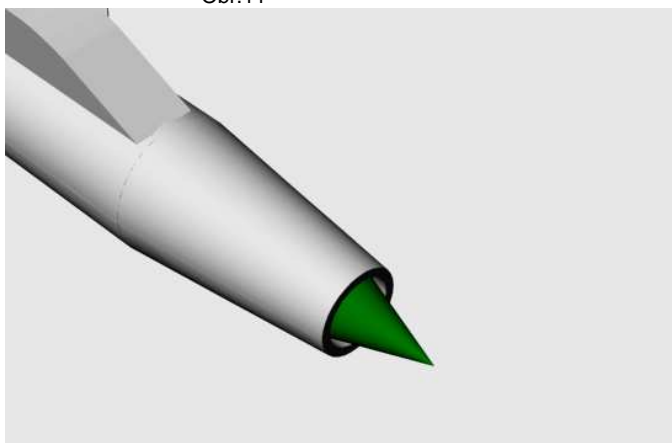
Obr.10



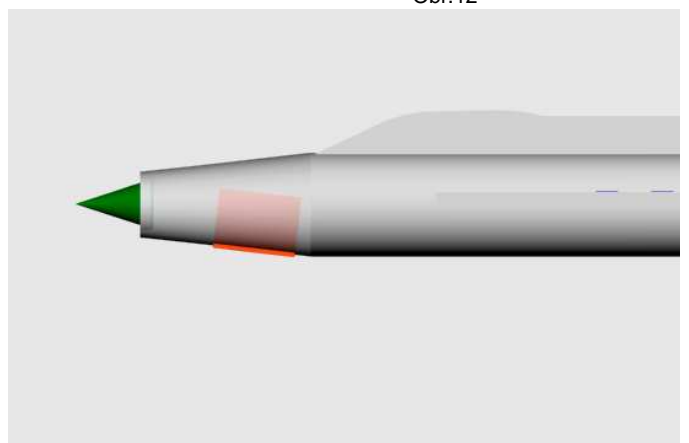
Obr.11



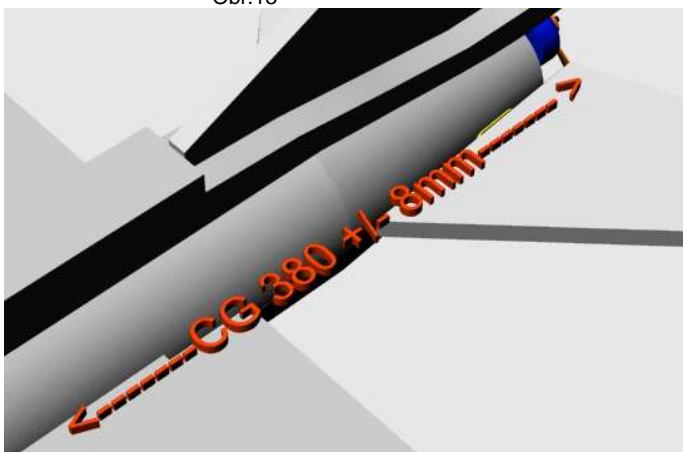
Obr.12



Obr.13



Obr.14



Obr.15

