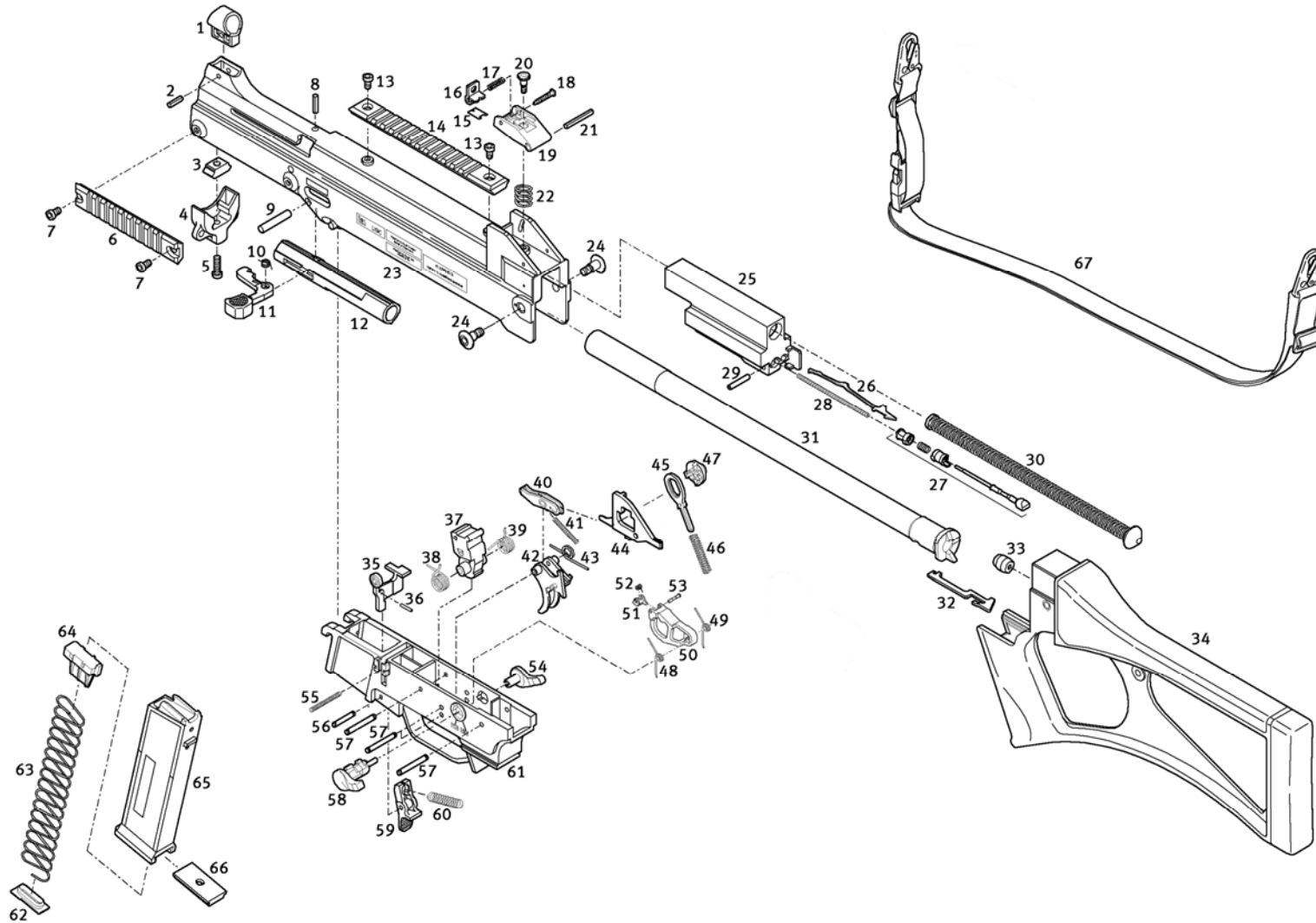




USC E semi-automatic rifle Calibre .45 ACP Illustration of individual components



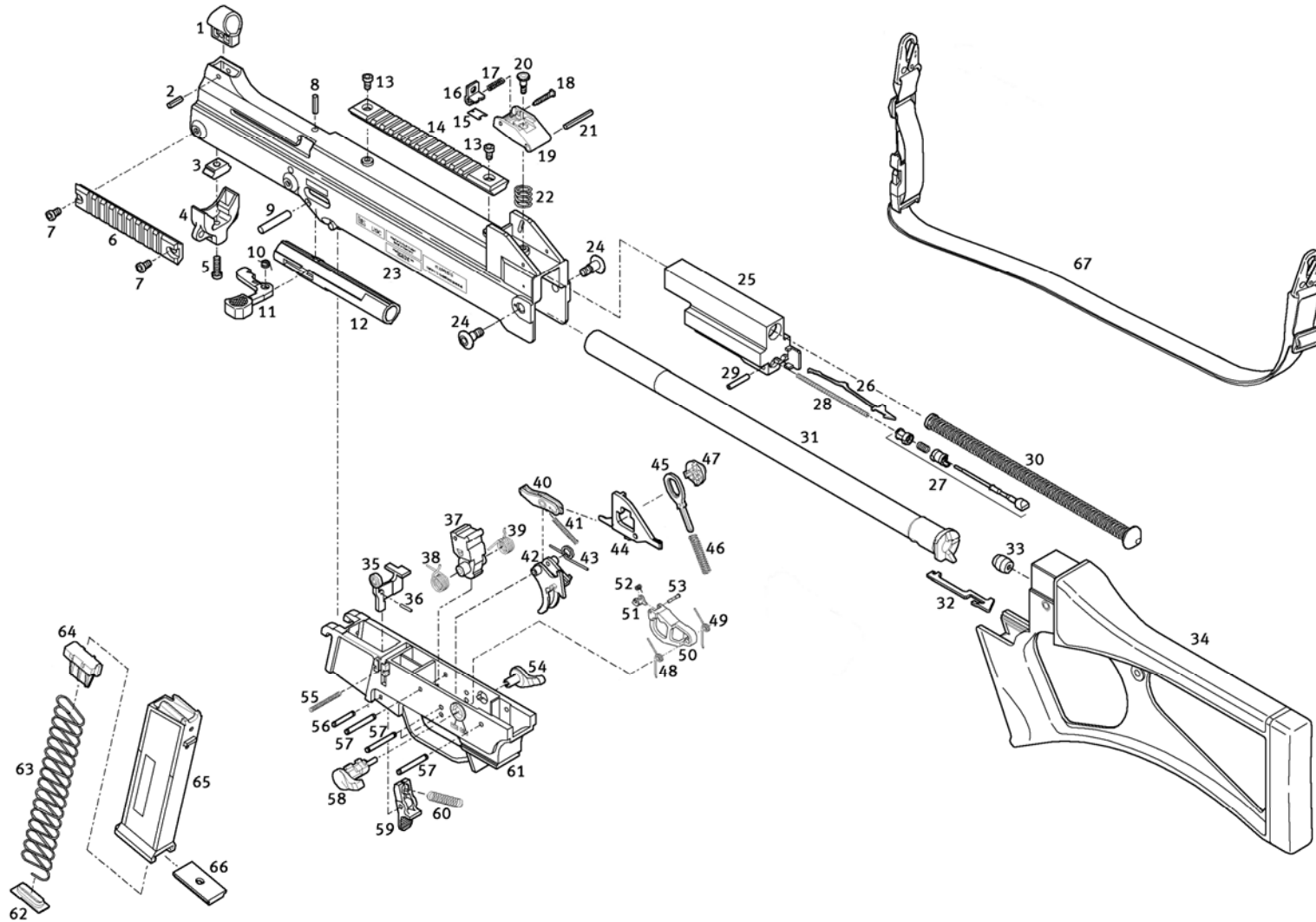


**USC E semi-automatic rifle
Calibre .45 ACP**

Pos.	Designation	Drawing-No.	Ident.-No.	Quantity per 100 weapons	Quantity per service unit		Comment
--	USC E semi-automatic rifle, Calibre .45 ACP	94587-010	227 559				
--	Receiver, compl. (Pos. 1-23)	94587-100	227 560				
1	Front sight	94191-100.09	217 506				
2	Clamping sleeve	ISO 8750-4x14-ST	928 747				
--	Finger protection, compl. (Pos. 3-5)	94191-940	219 364				
3	Adapter	94191-940.03	219 343				
4	Finger protection	94191-940.01	219 342				
5	Cylindrical headscrew, selflocking	94191-940.05	219 414				
6	Picatinny rail, short	94261-920.01	219 660				
7	Cylindrical headscrew, selflocking (2x)	94191-930.03	219 413				
8	Clamping sleeve	ISO 8750-4x16-ST	986 546				
9	Heavy type dowel pin for barrel	6x32	988 425				
10	Elbow spring for cocking lever	94191-100.12	217 508				
11	Cocking lever	94191-130	217 519				
12	Retainer plate for cocking lever	94191-100.11	217 507				
13	Cylindrical headscrew, selflocking (2x)	94191-930.03	219 413				
14	Picatinny rail, long	94261-930.01	219 661				



USC E semi-automatic rifle Calibre .45 ACP Illustration of individual components



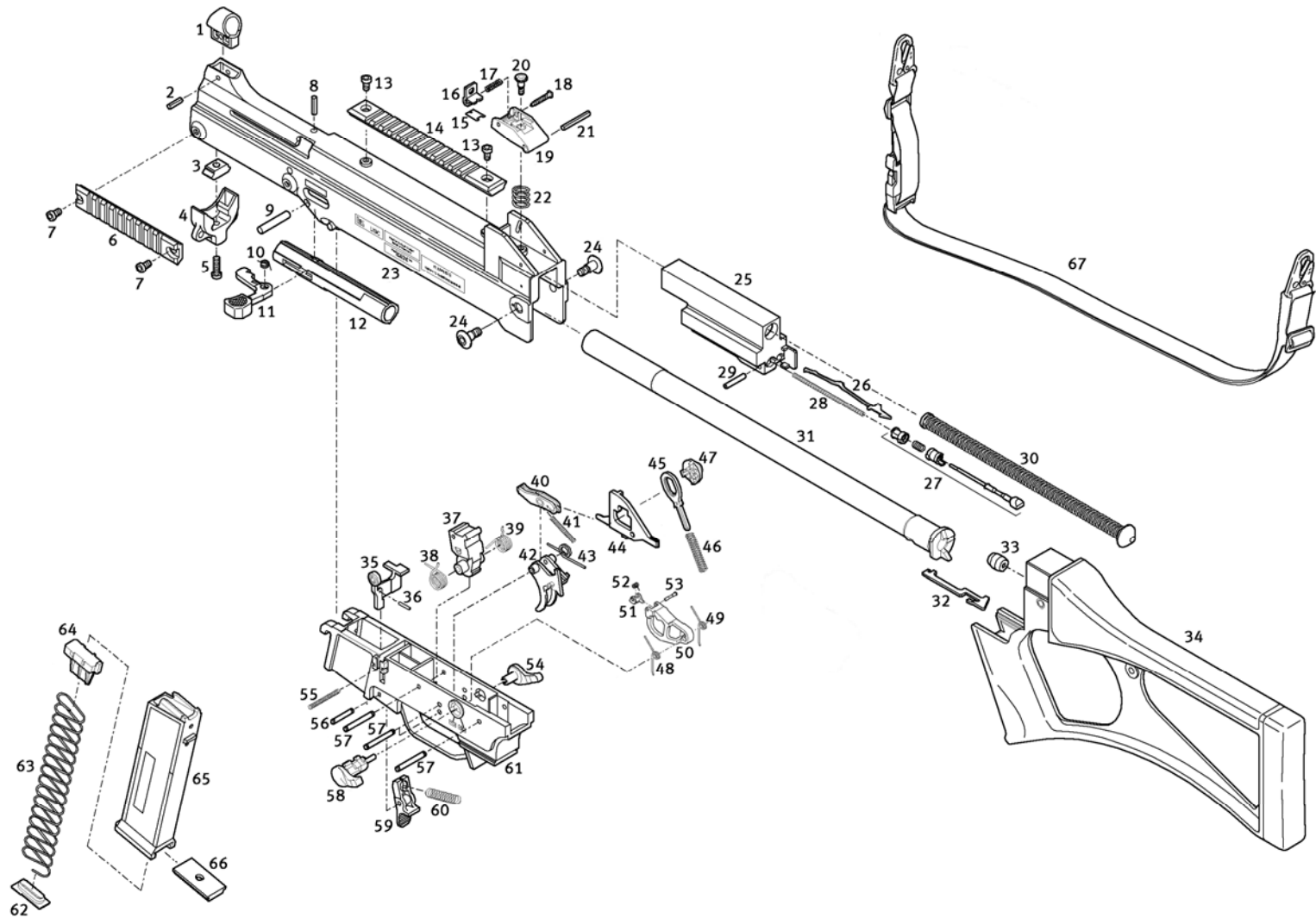


**USC E semi-automatic rifle
Calibre .45 ACP**

Pos.	Designation	Drawing-No.	Ident.-No.	Quantity per 100 weapons	Quantity per service unit		Comment
--	Rear sight, compl. (Pos. 15-19)	94191-120	217 513				
15	Leaf spring	94191-120.02	217 515				
16	Rear sight	94191-120.03	217 516				
17	Compression spring for rear sight	94191-120.05	217 518				
18	Windage adjustment screw	94191-120.04	217 517				
19	Rear sight support	94266-130.01	217 992				
20	Height adjustment screw	94336-171.06	218 524				
21	Clamping sleeve for rear sight, compl.	ISO 8750-4x30-ST	987 695				
22	Compression spring for rear sight, compl.	94191-100.05	217 504				
23	Receiver USC E	94587-110	227 563				
24	Flat head screw for buttstock (2x)	94261-010.03	218 472				
--	Bolt USC E, compl. (Pos. 25-29)	94261-200	219 495				
25	Bolt head carrier USC E	94261-210	219 499				
26	Extractor	94193-200.01	217 573				
27	Firing pin, compl.	94191-230	217 555				
28	Firing pin spring	94191-200.02	217 523				
29	Retaining pin	94191-200.04	217 587				
30	Recoil spring, compl.	94191-500	217 548				
31	Barrel USC E	94261-010.02	219 497				
32	Ejector	94191-010.01	219 399				



USC E semi-automatic rifle Calibre .45 ACP Illustration of individual components



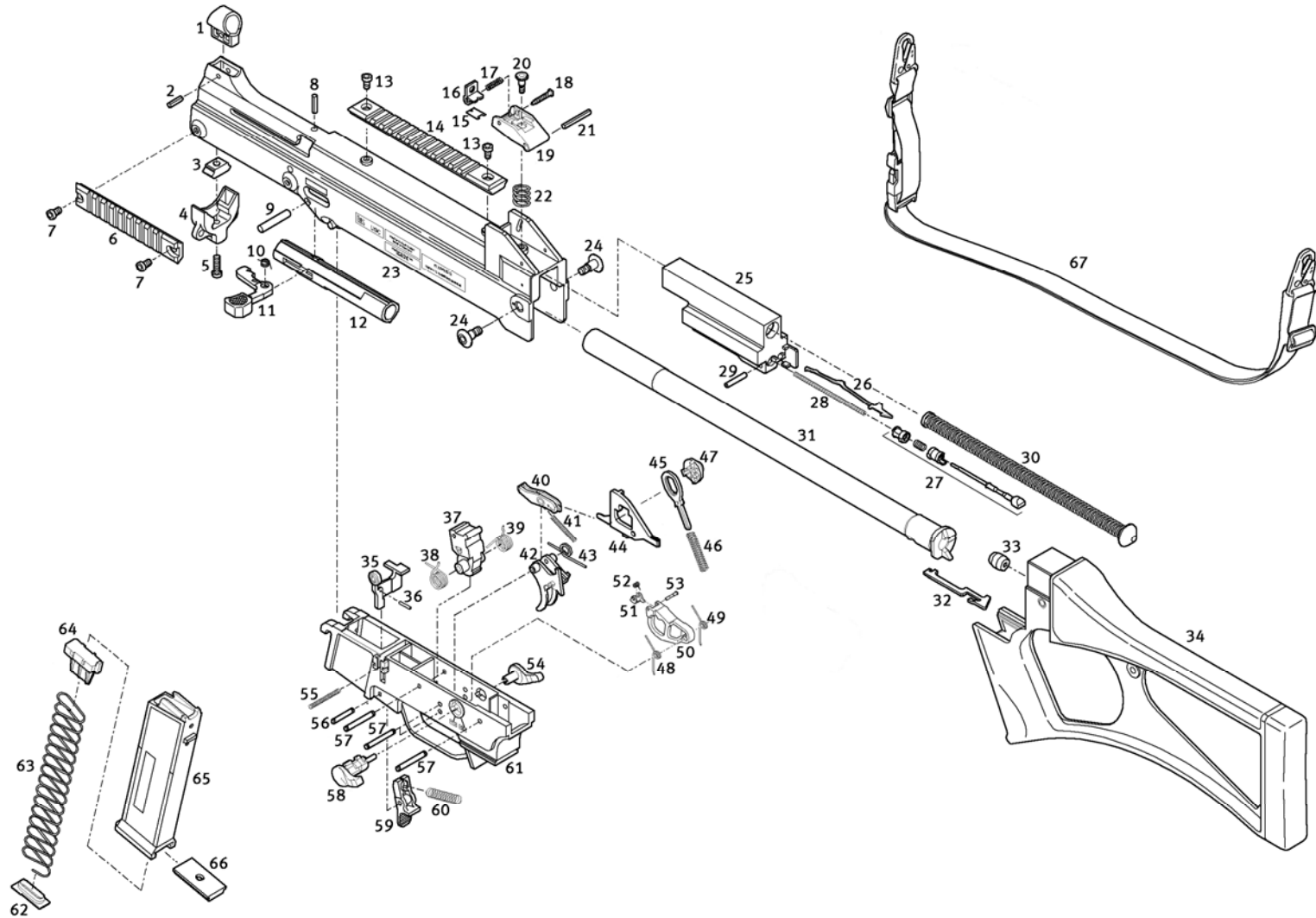


**USC E semi-automatic rifle
Calibre .45 ACP**

Pos.	Designation	Drawing-No.	Ident.-No.	Quantity per 100 weapons	Quantity per service unit		Comment
--	Buttstock, compl. (Pos. 33+34)	94587-900	227 562				
33	Buffer	94191-300.24	217 544				
34	Buttstock USC .45 ACP	94587-910	227 565				
--	Trigger housing, compl. (Pos. 35-61)	94587-300	227 561				
35	Bolt catch lever	94191-300.17	217 540				
36	Clamping sleeve for bolt catch lever	ISO 8748 - 2X12	928 080				
37	Hammer	94266-164	217 936				
38	Elbow spring for hammer, left	94191-300.07	217 585				
39	Elbow spring for hammer, right	94191-300.06	217 533				
40	Sear, compl.	94095-135	205 439				
41	Compression spring for sear	94266-160.07	217 917				
42	Trigger	94266-165	217 934				
43	Elbow spring for trigger	94095-130.08	205 422				
44	Slide, compl.	94266-168	219 411				
45	Index piece	94095-130.04	205 419				
46	Compression spring for index piece	94095-130.03	205 418				
47	Notched disc	94209-130.02	217 614				
48	Elbow spring, left for locking lever	94224-130.21	205 201				
49	Elbow spring, right for locking lever	94266-160.20	217 946				
--	Locking lever, compl. (Pos. 50-53)	94266-169	219 094				



USC E semi-automatic rifle
Calibre .45 ACP
Illustration of individual components





**USC E semi-automatic rifle
Calibre .45 ACP**

Pos.	Designation	Drawing-No.	Ident.-No.	Quantity per 100 weapons	Quantity per service unit		Comment
50	Locking lever	94224-139.01	214 613				
51	Catch	94266-169.03	219 095				
52	Elbow spring for catch	94224-139.07	214 616				
53	Bolt for catch	94224-139.05	214 615				
54	Safety lever	94095-130.28	205 437				
55	Compression spring for bolt catch	94261-300.16	218 453				
56	Axle for magazine catch	94261-300.02	219 549				
57	Axle (3x)	94191-300.04	217 532				
58	Safety axle	94266-160.27	217 945				
59	Magazine catch	94261-300.03	219 530				
60	Compression spring for magazine catch	94191-300.12	217 536				
61	Trigger housing	94587-320	227 564				
--	Magazine, compl. (Pos. 62-66)	94261-700	219 486				
62	Magazine locking plate	94261-700.03	219 525				
63	Magazine spring	94261-700.02	219 524				
64	Follower	94261-700.01	219 523				
65	Magazine housing	94261-710	219 522				
66	Magazine floor plate	94261-700.05	219 526				
67	Carrying sling, compl.	94200-500	214 085				