

Hatteras Convertible



Make	Model	Length	Price	Year	Condition
Hatteras	Convertible	53 ft	\$ 254,750	1973	Used
Boat Name	Hull Material	Draft	Number of Engines	Fuel Type	
Miss Virginia	Fiberglass	4 ft	2	Diesel	

Another Price Reduction! \$100,000 in Upgrades in the Last 20 Months! JUST REDUCED 20K!!!! Turn Key and Ready for Her New Owner!! A Truly MUST SEE!! Custom Cockpit Mezzanine Seating and Storage. All new interior! Perhaps the most highly customized 53 Hatteras ever offered. A great layout, tastefully appointed, fresh paint, fresh interior, CAT 3406 engines at 1200 hours.

Additional Information and Photos

Measurements

Cruising Speed: 28.19 kn
Max Speed: 34.52 kn
LOA: 53 ft
Beam: 16 ft
Max Draft: 4 ft
Displacement: 58000 lb
Fuel Tanks Capacity: 950 gal
Fresh Water Tanks Capacity: 250 gal

Propulsion

Engine #1

Engine Make: CAT
Engine Model: 3406E
Hours: 1300
Power: 800 hp

Engine #2

Engine Make: CAT
Engine Model: 3406E
Hours: 1250
Power: 800 hp

Salon

Huge... this is the galley down, two stateroom layout making the salon, where you spend most of your time, giant. The sofa converts to a sleeper and the dinette in the galley as well.... so there are no negatives to this layout. Most all of the interior is fresh including the following:

High-grade carpet
New solid surface flooring below
Sleeper sofa with throw pillows
Insulation below carpet
Frameless windows
Dry bar with sliding liquor cabinet
All new counter top surfaces
All the interior wood is refinished.

Additional Information and Photos

Tiled entrance way at salon door

Dinette

Down three steps is the large dinette to starboard with all new cushions, stowage below, hullside stowage, indirect lighting, will service six guests comfortably and converts to a sleeper that accommodates two. The hullside padded covering is also new.

Galley

Great layout, plenty of countertops, eye level stowage as well as below counter stowage. Upgrades include...

All new polished stainless steel hardware on all cabinets

New refrigerator and freezer

All new countertop and backsplash area

All new countertop fluorescent lighting

Owner Stateroom

Featuring twin berths with a nightstand between them. Many real nice upgrades include:

All new quilted coverlets, throw pillows and pillow shams

Totally mirrored inboard wall surface with new beveled mirror trim

Stowage below each berth

All new padded hullside covering

Indirect lighting with dimmer features

Separate air conditioner system- **Reworked 2016**

All the wood surfaces refinished

Owner Head

New countertops, sinks, faucets, towel racks

All new brushed stainless hardware

New makeup style lighting and makeup mirror

PARR electric head,

Freshly painted hullsides and walls

New headliner & new tiled flooring

Full size standup shower in separate stall

Upgraded lighting throughout

Guest Stateroom

Additional Information and Photos

Forward featuring 6'8" stacked bunks to port, full size hanging locker, drawer stowage to starboard with large countertop area that could make an additional bunk. Private head, shower, sink and vanity with upgrades including:

- All wood surfaces refinished
- New coverlets, shams, color coordinated throw pillos.
- Reading lamps for each bunk
- Separate air conditioning system
- Fully carpeted (NEW)
- All the hardware in the head is new, brushed stainless, towel rack with custom towels
- Teak shower deck
- PARR electric head with holding tand and laram
- New padded hullside coverings
- All new countertop and backsplash survaces in head
- Makeup style lighting in head
- Custom painted wall surfaces

Flybridge

Totally custom built console with center line steering featuring large radius corners and spacious dash area - perfect layout! Equipment includes:

- CAT ECDs electronic control displays for both engines, engine synchronizers with slow and fast idle
- Bennett trim tabs with joy sitck controls
- Morris clutches and throttles
- Hynautic hydraulic steering system
- All new switch panels with parallel, lights, start/stop
- Danforth 6" compass
- New Strataglass with both style dodgers
- Integrated seating with cushions built in forward of console
- Eyebrow stowage foward, built in
- Two new RELEASE MARINE delux teak helm chairs with cushions and covers

Electronics

- New Furuno NavNet VX2 Navionics Gold
- (GPS, chartplotter, color sounder with 1000 watt transducer, Navagation autopilot interphase)
- New Simrad AP22 Auto Pilot

Additional Information and Photos

New ICOM 504 VHF (totally waterproof) with GPS distress signal, loud hailer and scanner, 90B Shakespeare antenna
Power control spotlight
Electronic Control Displays (ECD)
Both Engines Full Digital Displays

Hardtop

New aluminum half tower with fiberglass molded hard top including:

Molded-in overhead electronics box
Quartz flood lights, molded in
LED counter sunk lighting (4)
Radar pod
Rupp antenna standoffs
Custom aluminum flybridge aft rail with rod holders
New Rupp 3X tournament outriggers "blacktip"

Cockpit

New RELEASE MARINE deluxe teak tuna chair with cushions, cover, double side gimbals and the "boltless" stanchion feature
Molded in tackle locker against aft bulkhead, to port is a giant live well with new high volume 110vt pump,,,opposite is a huge top loading freezer and furthest to starboard is the sink/rigging station with tackle storage locker below
Custom glass etched back bulkhead with this boat's side profile
Palm Beach flybridge ladder with new steps
Another live well below deck...huge
Tuna door with top hinging gate
New cockpit coaming padding
New flush mount rod holders
Fresh & salt water wash downs
Dockside TV, phone and 50 amp service
Cockpit flood lights, DC boarding lights
Waterproof deck reel outlets
Gunnel and stern hawse holes
Custom surge covers on cockpit drains

Hull and Deck

Additional Information and Photos

They started modernizing her by REMOVING EVERY BIT of exterior hardware. Totally fresh paint with Aqua Mist Awlgrip on hull sides and hard top undersides. Cloud White on the top sides with all new nonskid area on bow, bridge and cockpit.

Bow pulpit removed and bow deck area all customized with oversize chaulks and cleats

Custom bow deck hatches (3)

Glassed in front windshield

All new "frameless" tinted side cabin safety glass; this totally changes her side profile look upgrading to today's custom boat look

New custom side engine intake grills with "Delta-T" updraft air filtering system

All side port holes removed and glassed closed

New 25 watt international running lights

Custom built and painted hand rail on flybridge side overhang

Engine Room

Repowered 2003 with New 3406E Caterpillar 800hp turbo diesels now have right at 1200 hours.

2003 Refit ZF 1.75 gears with 29X35 four-blade props

Totally new exhaust system with surge tubes

New high-polished stainless risers

New Acumet 22 high grade stainless steel shafts

New dripless stuffing boxes

Shaft grounding system

Totally new 24 volt system with explosion proof battery box, new cables and switches

Totally new fuel manifold feed and supply system

All new Airquip high pressure fuel hoses and all brass fittings

New Racor dual fuel filters for both main engines and generator

New thru-hull intakes for both mains and generator

New 60 battery charger

New Northern Lights 20kw generator- 2198 hours

New automatic fire extinguisher system

New extra heavy overhead sound deadening lead foam with powder coated stainless steel mesh on removable engine hatches

New fiberglass, high gloss panels on aft bulkhead in engine room

All new fluorescent lighting

Disclaimer

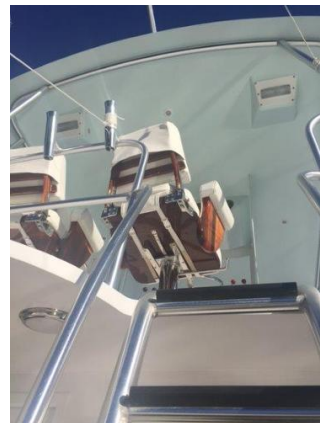
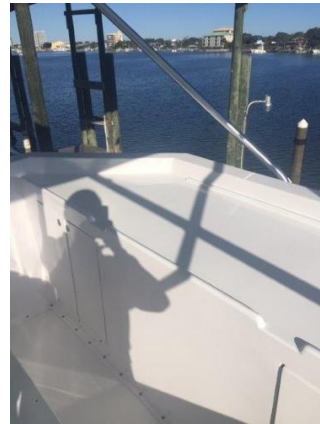
Additional Information and Photos

The Company offers the details of this vessel in good faith but cannot guarantee or warrant the accuracy of this information nor warrant the condition of the vessel. A buyer should instruct his agents, or his surveyors, to investigate such details as the buyer desires validated. This vessel is offered subject to prior sale, price change, or withdrawal without notice.

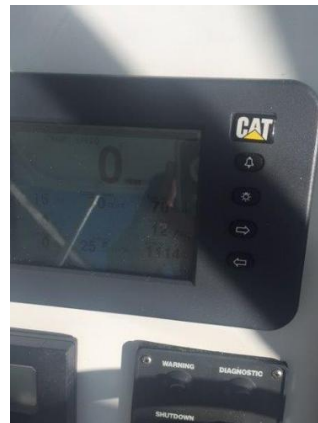
Additional Information and Photos



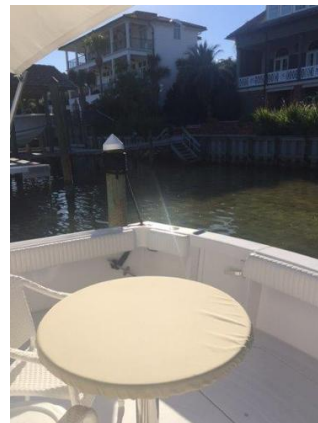
Additional Information and Photos



Additional Information and Photos



Additional Information and Photos



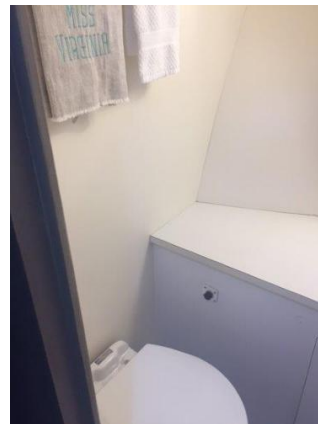
Additional Information and Photos



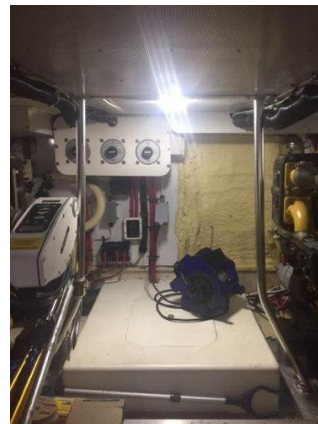
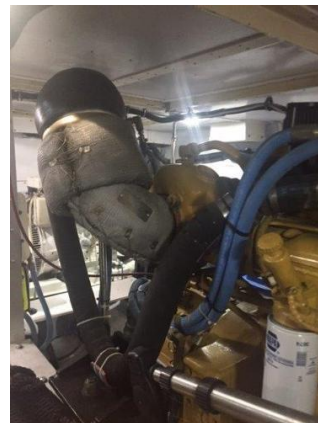
Additional Information and Photos



Additional Information and Photos



Additional Information and Photos



Additional Information and Photos



Additional Information and Photos

