

Bertram 510 Convertible



Make	Model	Length	Price	Year	Condition
Bertram	510 Convertible	51 ft	\$ 389,500	2001	Used

Boat Name	Hull Material	Draft	Number of Engines	Fuel Type
Lucky 2	Fiberglass	5 ft	2	Diesel

Just Reduced 50k!!!! Owner is looking for offers!! Lucky 2 is a very nice, proven tournament winner! She won the Baypoint Invitational back in 2001 with her 1046lb +Grander Blue Marlin (One of the only two Granders caught in the Gulf). She raises the fish. The owner has moved up, is currently a two boat owner and ready to move this one. She features a 3 Stateroom 2 head layout. Bertram did a great job of use of space on the 51. This is apparent when you enter her huge salon. Please call or email for more information or to set up an appointment to take a look at this sport fishing legend.

Additional Information and Photos

Measurements

Cruising Speed: 29 mph
Cruising Speed RPM: 1850
Max Speed: 35 mph
Max Speed RPM: 2250
LOA: 54 ft
Beam: 16 ft 2 in
Max Draft: 5 ft
Dry Weight: 59535 lb
Trim Tabs: Yes
Windlass: Electric Windlass
Fuel Tanks Capacity: 1057 gal
Fresh Water Tanks Capacity: 185 gal
Holding Tank Capacity: 50 gal
Number of single berths: 6
Number of Cabins: 3
Number of Heads: 2

Propulsion

Engine #1

Engine Make: MAN
Primary Engines: Inboard
Drive Type: Direct Drive
Location: Port
Engine Year: 2001
Hours: 2888
Power: 800 hp

Engine #2

Engine Make: MAN
Primary Engines: Inboard
Drive Type: Direct Drive
Location: Starboard
Engine Year: 2001
Hours: 2868
Power: 800 hp

Additional Information and Photos

Electronics

Depthsounder
Radar
Plotter
DVD Player
Autopilot
Radio
Compass
CD Player
GPS
Cockpit Speakers
VHF

Inside Equipment

Electric Bilge Pump
Microwave Oven
Air Conditioning
Electric Head
Heating
Hot Water
Refrigerator
Deep Freezer
Sea Water Pump
Battery Charger

Electrical Equipment

Shore Power Inlet
Generator

Outside Equipment/Extras

Cockpit Cushions

Manufacturer Provided Description

The Bertram 510 Convertible has a modified deep-V hull that ensures the most comfortable ride in all sea conditions. Redesigned rudders and struts reduce hydrodynamic drag and increase performance, while redesigned propellers reduce vibration and noise.

Additional Information and Photos

Engineers from the Ferretti Group, parent company of Bertram Yacht, added their knowledge of the latest construction and lamination techniques honed through years on the international offshore race circuit. The interior of the 510 Convertible has a spacious salon, while the functional galley on the main level leads to three comfortable cabins below.

With sophisticated computer-aided design programs, Bertram engineers planned every aspect of the mechanical and interior layout to ensure optimum trim under all conditions for a consistently superior performance. For the sportfisherman, the Bertram 510 Convertible provides a fishing platform that meets and exceeds the demands of the most avid tournament angler.

Disclaimer

The Company offers the details of this vessel in good faith but cannot guarantee or warrant the accuracy of this information nor warrant the condition of the vessel. A buyer should instruct his agents, or his surveyors, to investigate such details as the buyer desires validated. This vessel is offered subject to prior sale, price change, or withdrawal without notice.

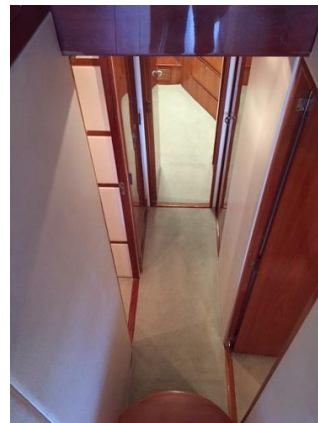
Additional Information and Photos



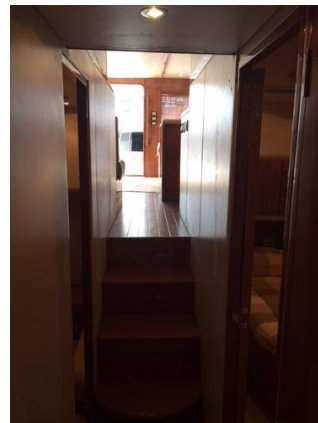
Additional Information and Photos



Additional Information and Photos



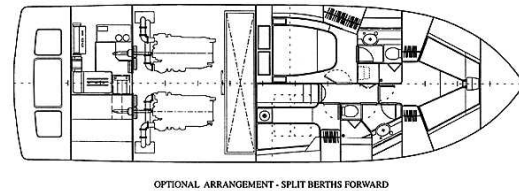
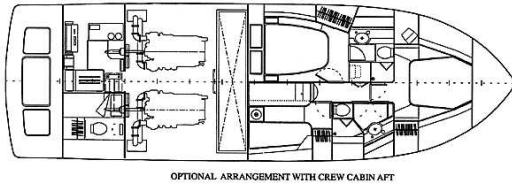
Additional Information and Photos



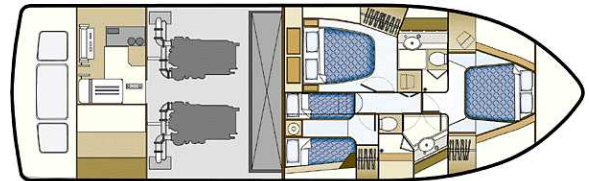
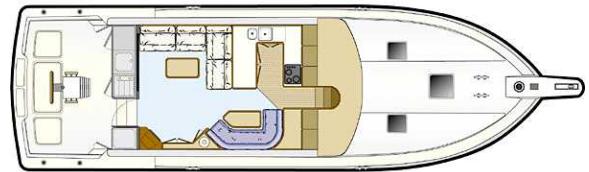
Additional Information and Photos



Additional Information and Photos



Manufacturer Provided Image



Manufacturer Provided Image