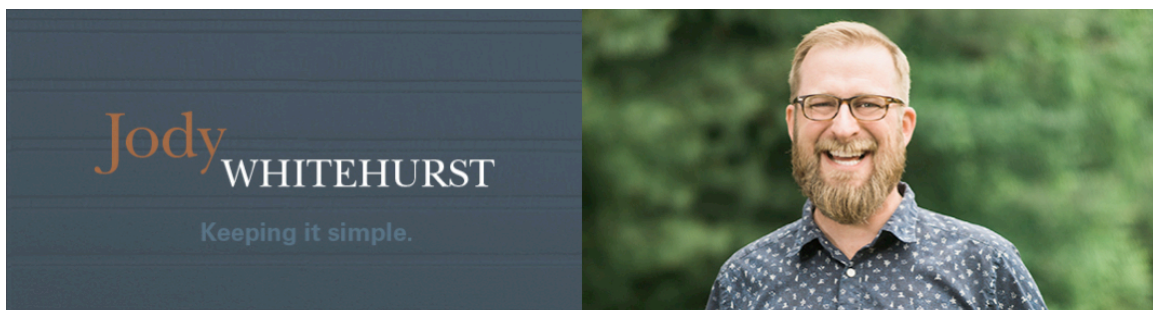
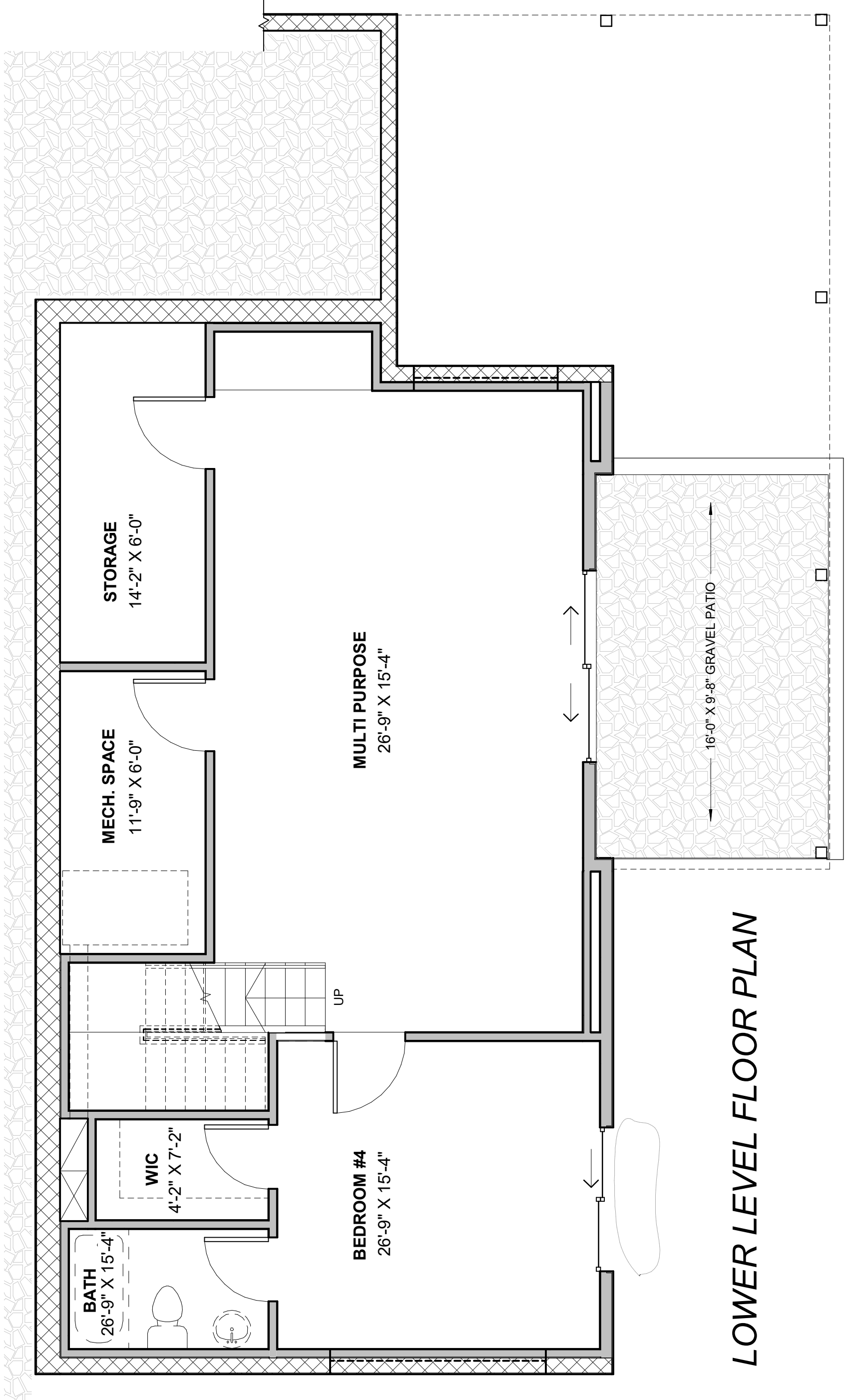




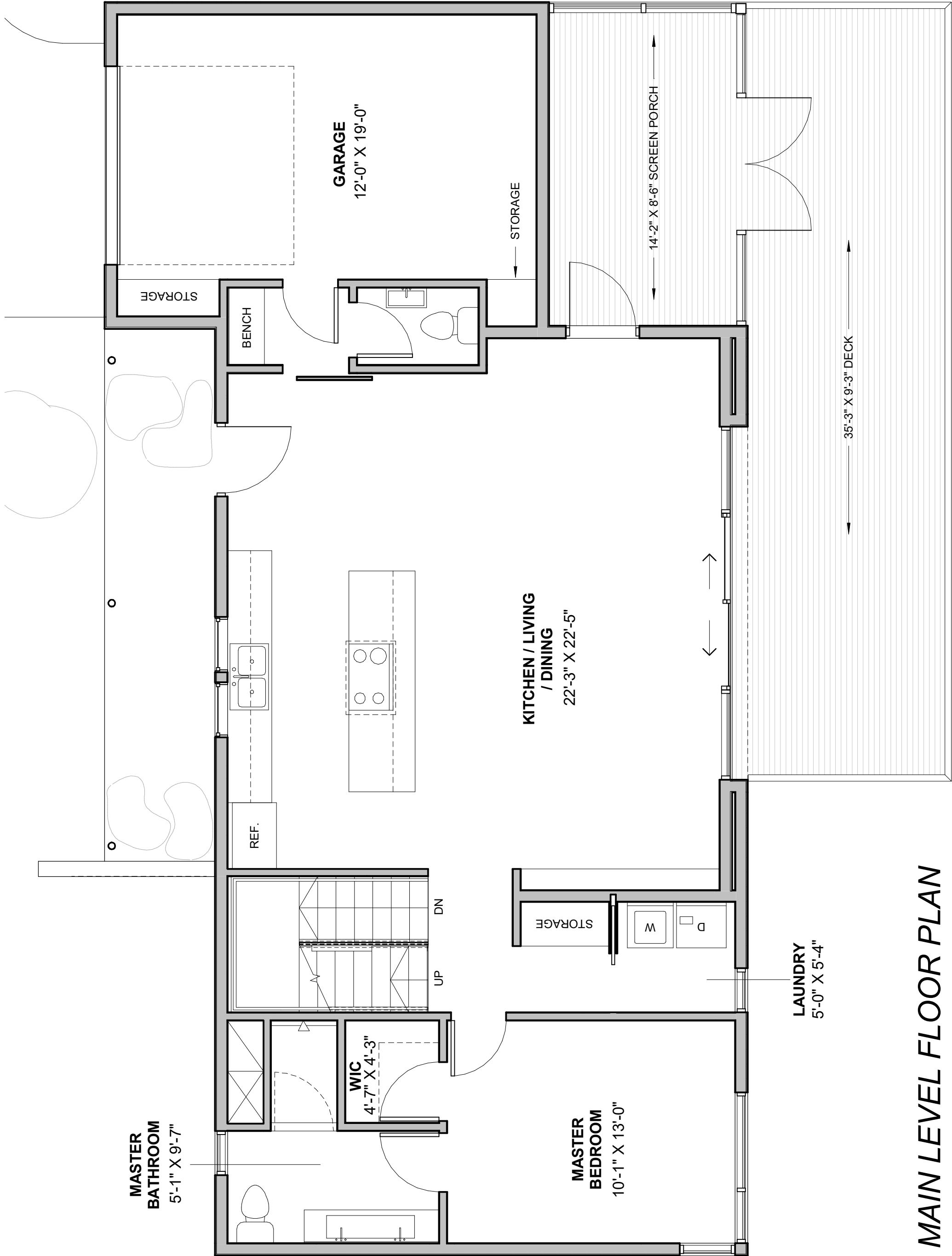
36 Malvern Walk Drive, West Asheville

- 2018 AHBA Parade of Homes "Coming Soon" entry by Balsam Homes
- Modern farmhouse design and finish detail, situated on a 0.425 acre lot
- Green Built NC Certified
- Approximately 2,516 square feet
- 4 bedrooms + 3 ½ baths + family rooms on each of 3 levels
- Master suite on main with walk-in tile shower & walk-in closet
- Open floor plan with large windows for day lighting & connection to outdoors
- Lower level boasts guest room with en suite bath. Could be separate apartment.
- Cook's kitchen with white wood cabinetry with leathered black granite, stainless apron sink, stainless SAMSUNG appliances, and butcher block island
- Wood windows, doors and trim throughout the home
- All walls & trim finished with low-VOC premium paints
- Hardwood maple floors on main and upper levels & polished concrete in basement
- High-efficiency heat pump, tri-zoned with thermostats on each level
- Panasonic WhisperGreen fan for fresh air ventilation
- Hybrid Heat Pump Water Heater
- LED lighting throughout
- Ready for PV solar system. Upgrade available.
- Metal roof
- 2x6 exterior walls
- Open-cell spray foam insulation in roof deck and band joists
- Pella 450 Series windows and exterior doors
- Fiber-cement board & batten siding
- Screened porch and large back deck





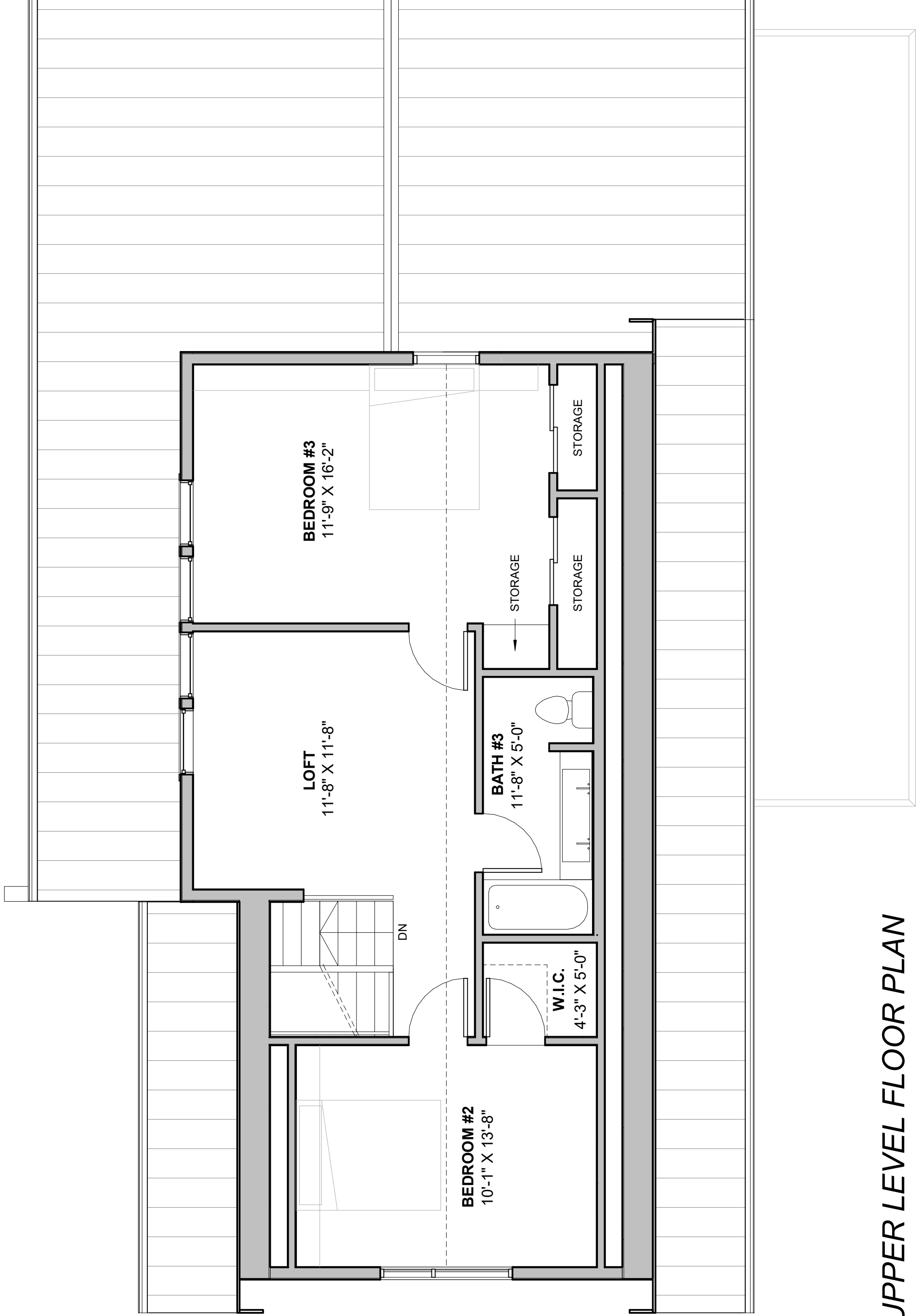
LOWER LEVEL FLOOR PLAN



MAIN LEVEL FLOOR PLAN



FRONT ELEVATION



UPPER LEVEL FLOOR PLAN