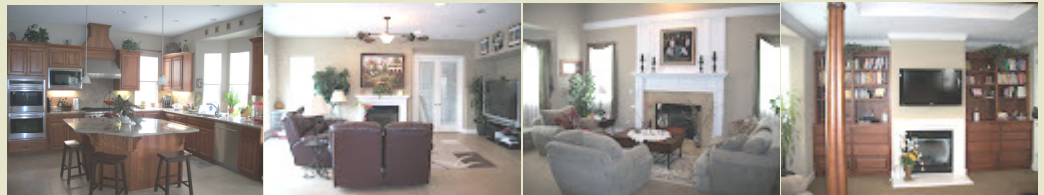




Open this Sunday! 2-5 pm

- Breathtaking open floor plan that is an entertainers delight!
- Dramatic 2 story entry with decorative inlet tile floors.
- Master suite/office with private bathroom downstairs.
- Master Suite upstairs with built in dressers on each side of fireplace.
- Separate Rec Room with French Doors to a spacious back yard and so much more!
- Large Private Backyard with no Rear Neighbors



2030 Cabernet Way, Livermore

Visit our open house on
Feb 19th from 2-5 pm

- 5 Bedrooms (with 2 Master Suites)
- 3.5 Bathrooms
- approx. 3,777 sq. ft. Living
- 14,255 sq. ft. Private Lot with a semi private side street
- Great Location with Easy Access to 84 / 580, Downtown, Shopping, Parks and much more
- Chefs Dream comes true with this large Kitchen, Wolf Gas Stove, Pantry, Plenty of Counter Space. Granite Island with Sink
- Formal Dining Room with sitting area and built in hutch
- Formal Living Room Enjoy guests while visiting in front of the fire
- Oversized Family Room with Fireplace, large niche for any size TV, surround sound and two sets of French Doors which leads you to the Extra Large Rec Room and/or Back Yard
- Large Private Back Yard with Side Yard Access
- Interior Design touches throughout



Tammy Pryor - REALTOR®

DRE#01320620

Phone: 925-292-SOLD (7653)

E-mail: Team@292SOLD.com



"Team 292-SOLD believes this information to be correct, but has not verified this information and assumes no legal responsibility for its accuracy."