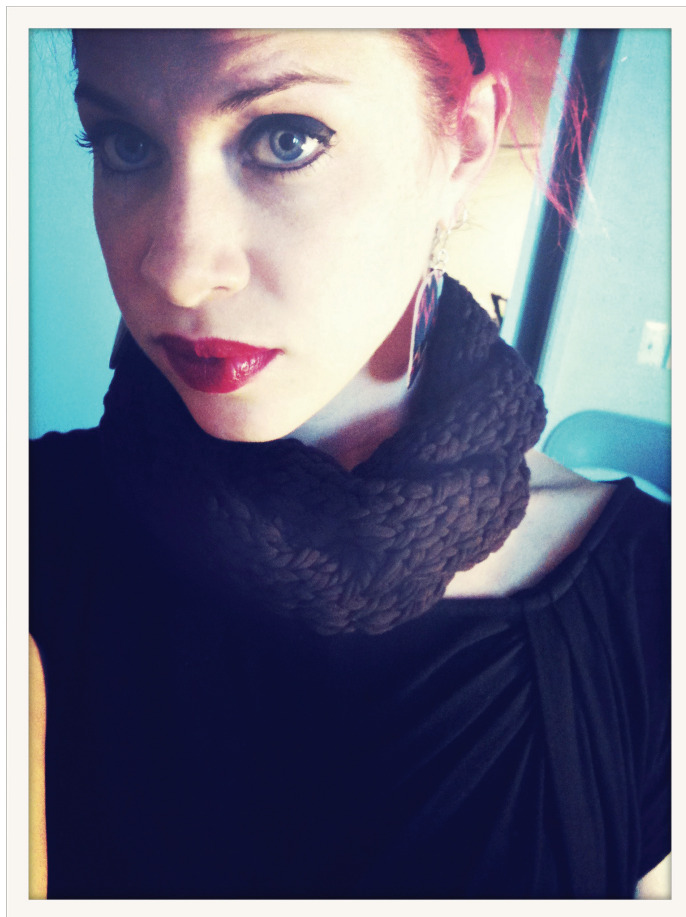


# batsy

patterns



## Large Chain Cowl

Cast on 22 stitches

Rows 1 - 10: stockinette stitch (knit odd rows, purl even)

Row 11: knit 1, slip 5 onto cable needle (hold to front), k5, k cable needle, slip 5 onto cable needle (hold to front), k5, k cable needle, k1

Repeat pattern to desired length, seam ends together.

To make wider add 10 stitches to cast on for every extra cable desired.