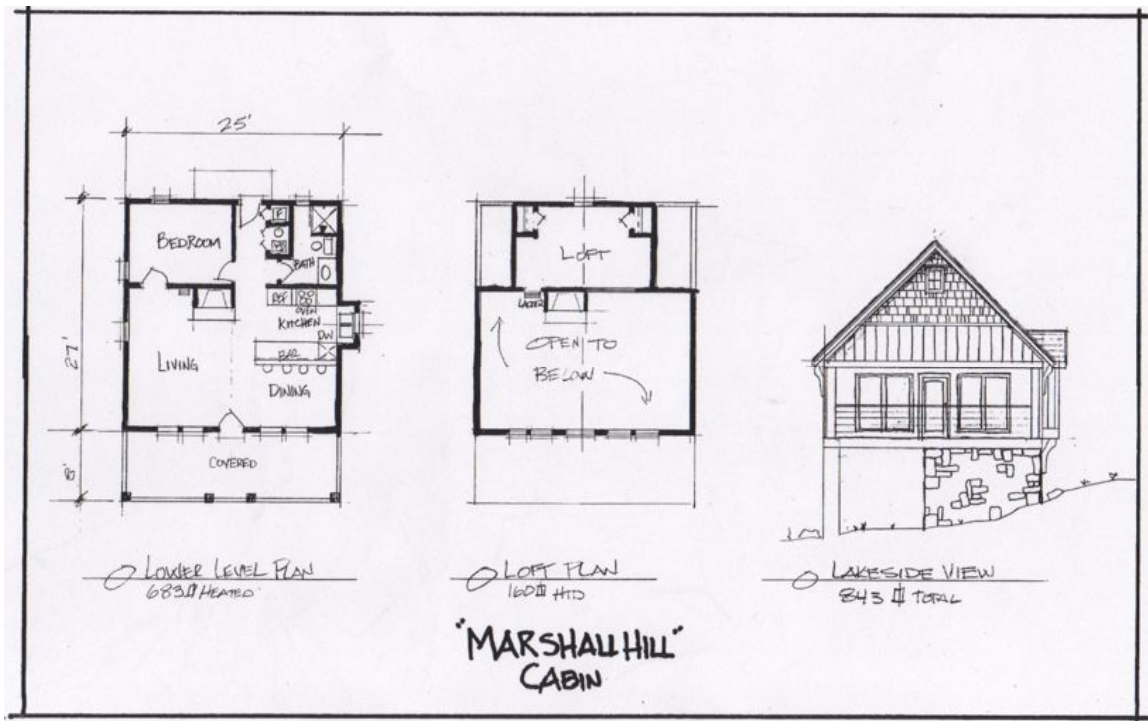




Hunter Homes, Inc.
Lake Site Division
10051 S. Yale Ave. Suite 200
Tulsa, Oklahoma 74137
918-299-5544

Cottages and Cabins projected for Construction, Fall of 2011



Marshall Hill-

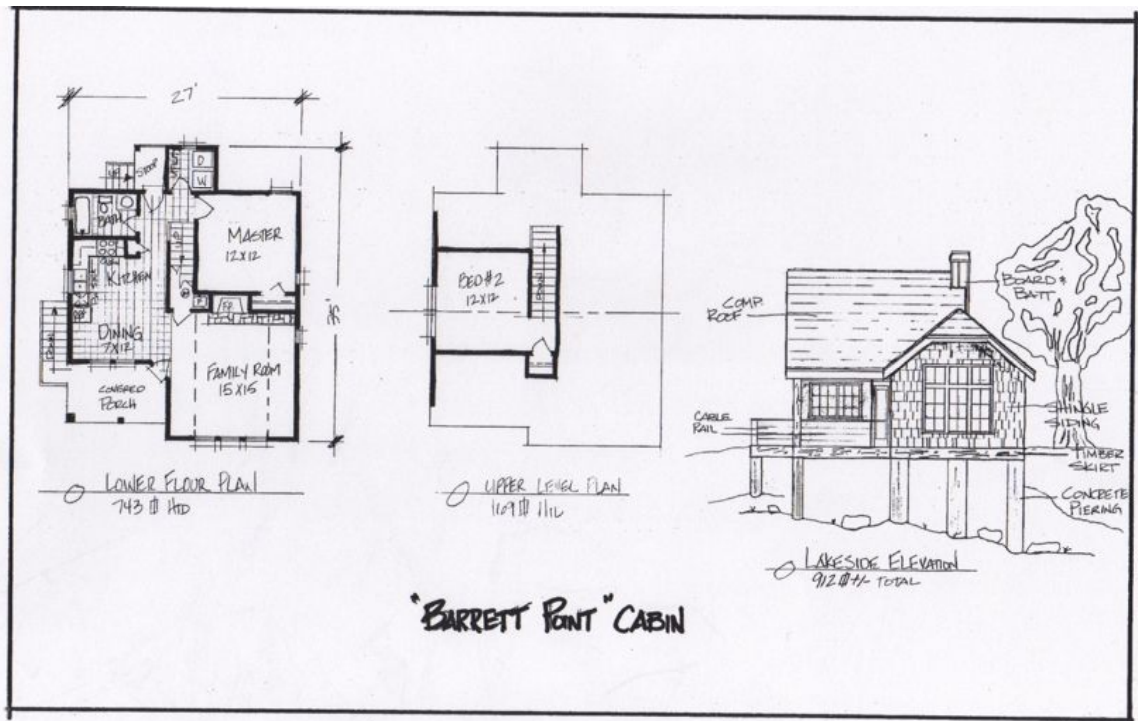
Our inspiration for this plan comes from a little prairie **Cabin** on the popular T.V. Series, "*Little House on the Prairie*". Designed to comfortably serve a family of five for a weekend getaway, this unit offers a **+/- 843 s/f** single bedroom for Ma and Pa and room in the loft for three or four kids. If "ladder access" to the loft troubles you, a staircase could be provided along the outside living wall. Furnish a pull out sofa adjacent to the fireplace in the living and easily allow sleeping space for two more. We don't believe the *Ingles* had an indoor utility room or bathroom but we've included them anyway!

Have Questions about this Design? Give us a call and well help you decide which one is right for you! Brad can be reached at 918-830-3271 from 7 A.M. to 8 P.M. Mon-Sat



Hunter Homes, Inc.
Lake Site Division
10051 S. Yale Ave. Suite 200
Tulsa, Oklahoma 74137
918-299-5544

Cottages and Cabins projected for Construction, Fall of 2011



Barrett Point-

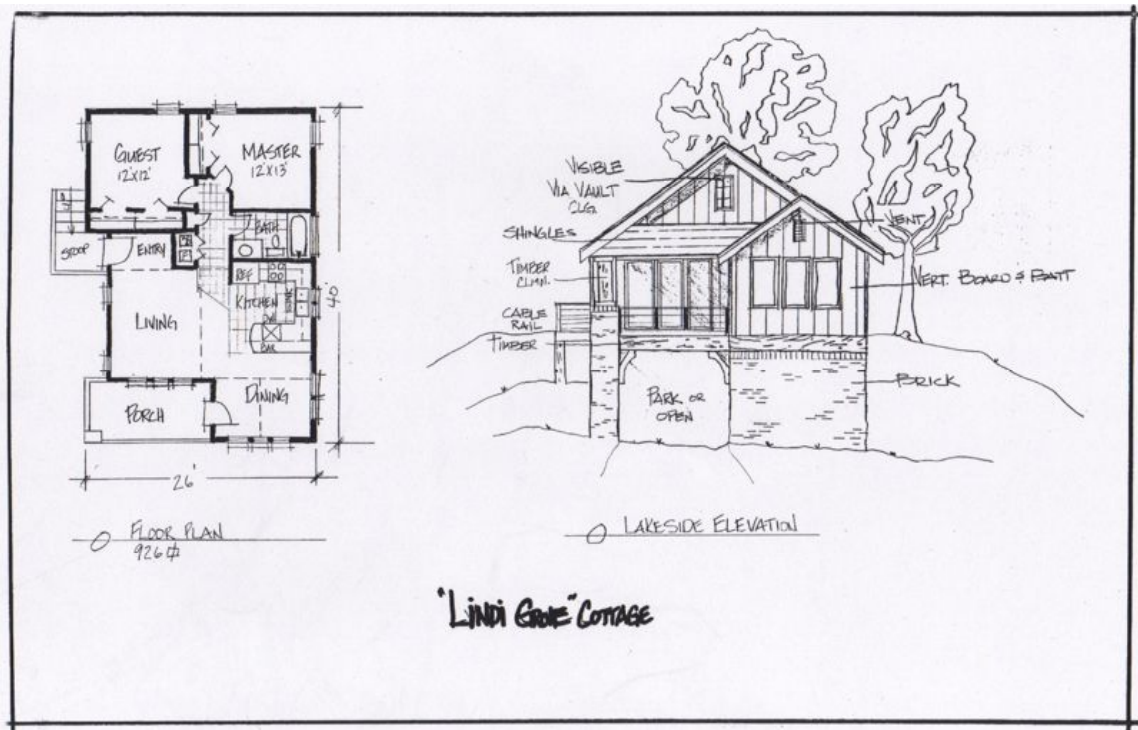
This **Cabin** houses a quaint but efficient kitchen and dining area while its design allows for dinner on the enclosed covered porch. The large living room windows draw your view to the clear waters of beautiful Skiatook Lake. The full sized utility eases the burden of laundry upon your return home. Comfortable and cozy, this +/- **912 s/f** two bedroom, with its efficiently placed single bath can sleep ten and may cause you to prolong your stay well into the work week. Well, maybe after your guest are gone!

Have Questions about this Design? Give us a call and we'll help you decide which one is right for you! Brad can be reached at 918-830-3271 from 7 A.M. to 8 P.M. Mon-Sat.



Hunter Homes, Inc.
Lake Site Division
10051 S. Yale Ave. Suite 200
Tulsa, Oklahoma 74137
918-299-5544

Cottages and Cabins projected for Construction, Fall of 2011



Lindi Grove-

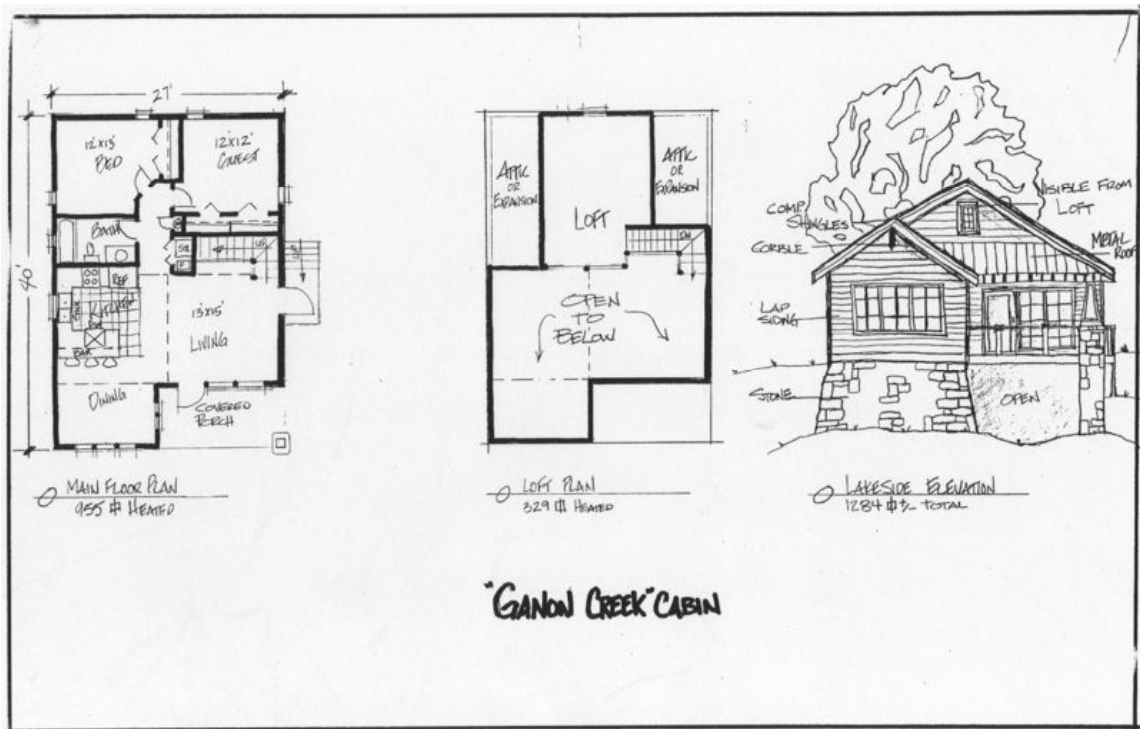
Designed to provide a comfortable +/- 926 s/f, you'll settle nicely in this single-level for six adults. This **Cottage** is both cozy and private, thanks to its two secluded bedrooms. The large living and dining room windows direct your attention toward the natural beauty overlooking either the cove or the lake. Why wait to do laundry, when there's room for a stacked unit across from the bathroom! The single bath allows enough room for either a walk-in shower or a combo shower/tub while the kitchen provides all that's needed to satisfy a gang of weary lake goers. After diner, the covered deck calls for your relaxation.

Have Questions about this Design? Give us a call and well help you decide which one is right for you! Brad can be reached at 918-830-3271 from 7 A.M. to 8 P.M. Mon-Sat.



Hunter Homes, Inc.
Lake Site Division
10051 S. Yale Ave. Suite 200
Tulsa, Oklahoma 74137
918-299-5544

Cottages and Cabins projected for Construction, Fall of 2011



Ganon Creek-

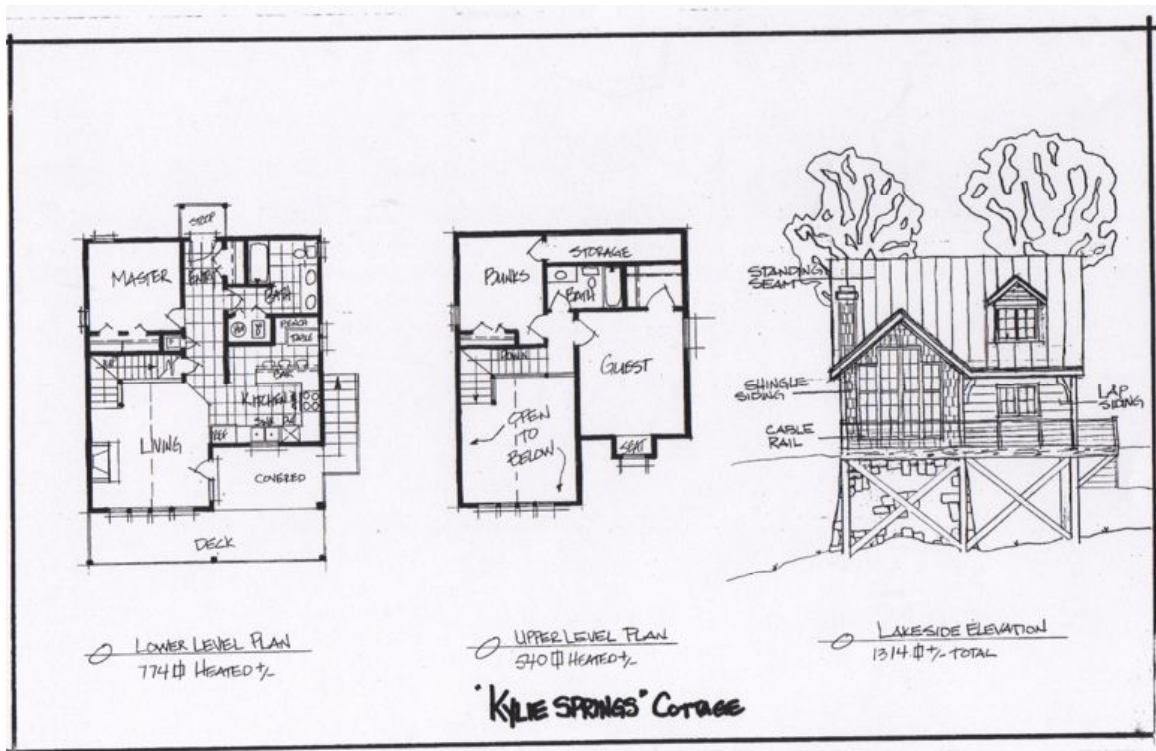
Searching for privacy has been granted in this two-bedroom get-away! This design includes a loft with room for six (bunks) overlooking the main living area and a separate laundry tucked under the staircase. With the spaciousness of this **Cabin**, two families of five are sure to find themselves creating some real "quality time". The vaulted kitchen, living and dining areas provide access to a large covered deck, which offers a commanding view of the lake. The kitchen and bath are sized to handle traffic flow for the typical weekend at the lake. All carefully arranged in +/- **1284 s/f**. There's even room for some upstairs storage.

Have Questions about this Design? Give us a call and we'll help you decide which one is right for you! Brad can be reached at 918-830-3271 from 7 A.M. to 8 P.M. Mon-Sat.



Hunter Homes, Inc.
Lake Site Division
10051 S. Yale Ave. Suite 200
Tulsa, Oklahoma 74137
918-299-5544

Cottages and Cabins projected for Construction, Fall of 2011



Kylie Springs-

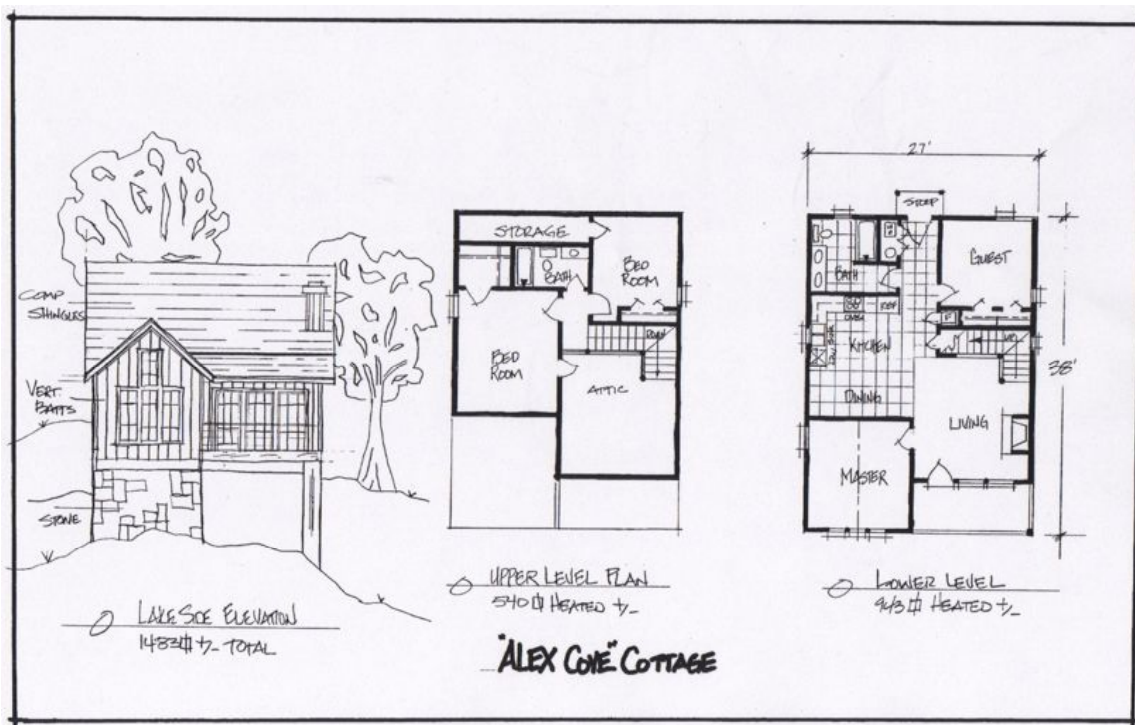
You're sure to feel closer to the lake in this +/- 1314 s/f retreat, so watch your step or you're liable to get wet! This **Cottage** has it all for the larger family or group of friends. It features a warm interior with the master bedroom downstairs, private upstairs sleeping accommodations for two, plus a bunkroom with enough space for another four. By providing two separate full baths, everyone will be afforded the comforts of home while gazing upon the clear waters of Skiatook Lake! In addition, there is a fireplace, open staircase, covered patio, expansive deck and vaulted ceiling over the grand living room windows to bring the outdoors inside. Call in sick to work at your own risk!

Have Questions about this Design? Give us a call and we'll help you decide which one is right for you! Brad can be reached at 918-830-3271 from 7 A.M. to 8 P.M. Mon-Sat.



Hunter Homes, Inc.
Lake Site Division
10051 S. Yale Ave. Suite 200
Tulsa, Oklahoma 74137
918-299-5544

Cottages and Cabins projected for Construction, Fall of 2011



Alex Cove-

So, you need the most spacious **Cottage** do ya! Well, here's a "pumped up" version of the "Kylie Springs" that provides **+/- 1500 s/f** of relaxation. We've relocated the master by adding an additional downstairs bedroom off of the living area on the "water side" of the plan. Designed for those who desire calling the lake their home, we've rearranged the kitchen and dining areas on the lower level, placed a master / study off of the living and allowed for real attic storage upstairs. A screen enclosure on the covered porch would definitely make this one "home sweet home"!

Have Questions about this Design? Give us a call and well help you decide which one is right for you! Brad can be reached at 918-830-3271 from 7 A.M. to 8 P.M. Mon-Sat.