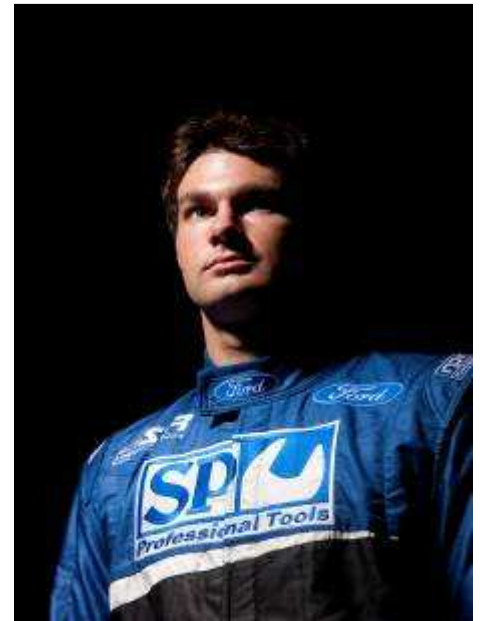




L&H 500 PHILLIP ISLAND

10-12 SEPTEMBER 2010

Shane van Gisbergen teams up with John McIntyre for the first endurance race of 2010



TRACK AND EVENT INFORMATION

CIRCUIT: Phillip Island Grand Prix Circuit

ADDRESS: Back Beach Road, Cowes Phillip Island

EVENT NAME: "L & H 500"

TRACK LENGTH: 4.445 Kms

DIRECTION: Anti-clockwise

ESTIMATED TOP SPEED: 290km/h

AVERAGE SPEED: 174km/h

CURRENT QUAL RECORD: 2000 Craig Lowndes /Holden

Commodore VT 1m32.0713s

CURRENT LAP RECORD: 1999 Craig Lowndes/Holden Commodore

VT 1m33.4389s

WEDNESDAY 8TH SEPT

In the lead up to the L&H 500 Phillip Island Race Peter Sengstock and Shane van Gisbergen will be out and about on Wednesday 8th September. Cruising around Melbourne in the SP show car they will visit students at Docklands Tafe and the children and families at Parkville Ronald McDonald House.

FRIDAY 10TH SEPT

It's all about practice, practice and more practice

SATURDAY 11TH SEPT

Practice and Qualifying

SUNDAY 12TH

1:35pm L&H 500 PHILLIP ISLAND RACE – 113 laps or 1 lap after 5:10pm

SP Tools for Kids Charity Program is supporting Ronald McDonald House Charity in 2010



Publisher:
Jess Plush, Motorsports Co-ordinator
PO Box 715, Archerfield Qld 4010
Ph: 0488 129 523
Email: jess.plush@sptoolsracing.com